



6th Element

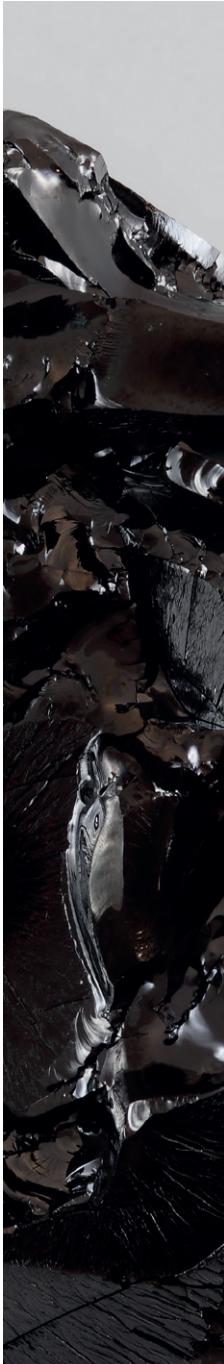
GRUPO INDELAGUE

CONCEPTO E INSPIRACIÓN

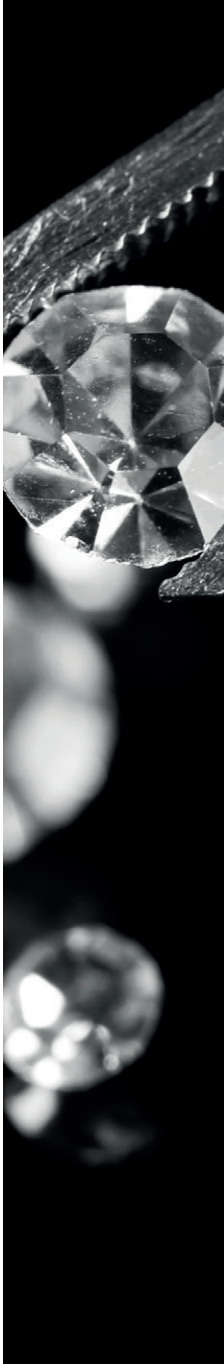
ESTRELLA FUGAZ

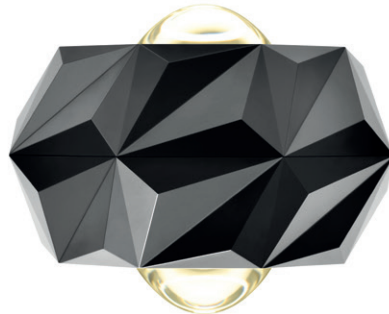
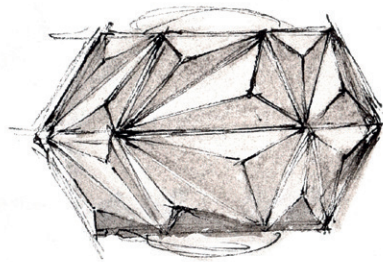
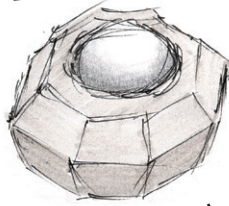


CARBONO



DIAMANTE


























6TH
ELEMENT
GAMA



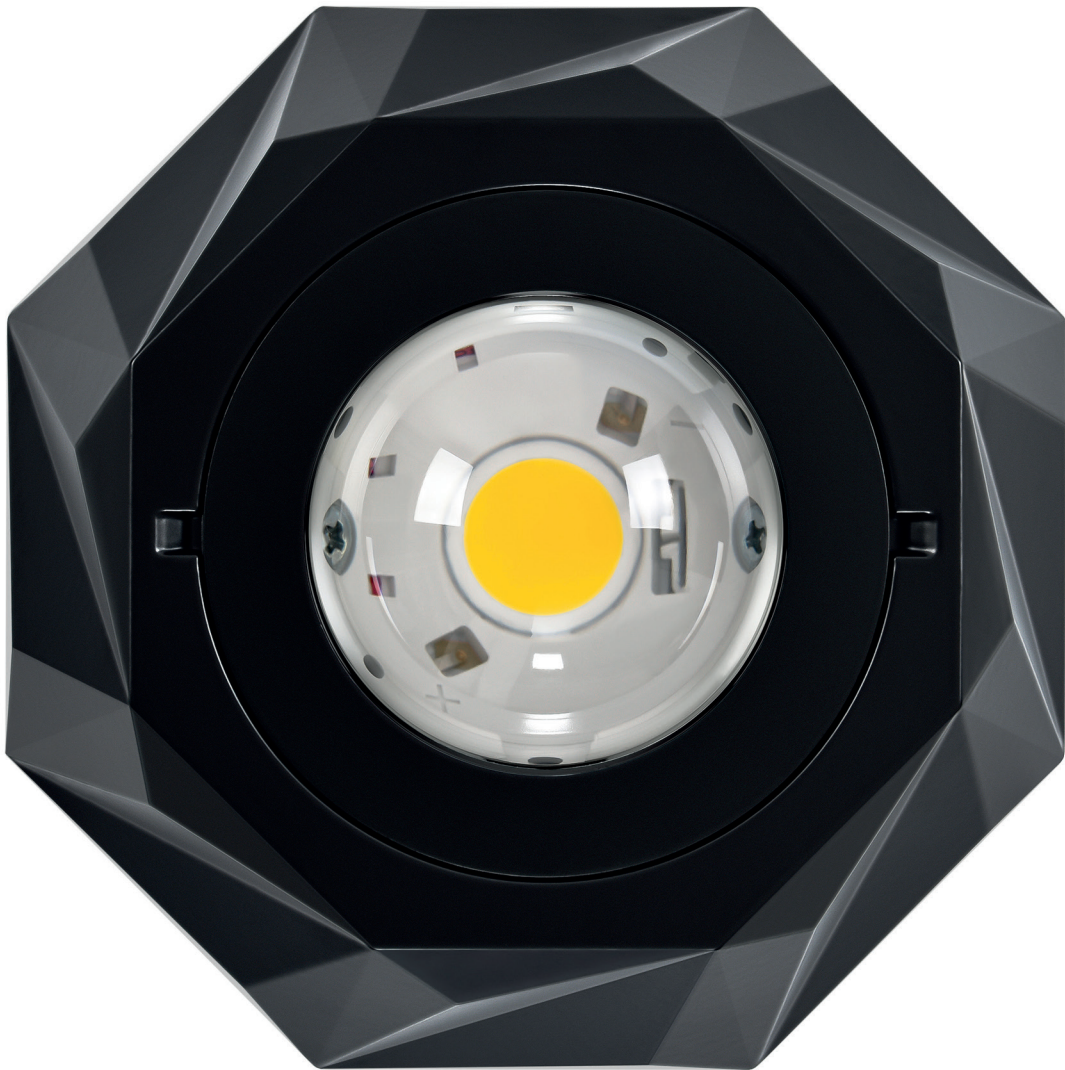
GERMAN
DESIGN
AWARD
SPECIAL
2017



LA GAMA

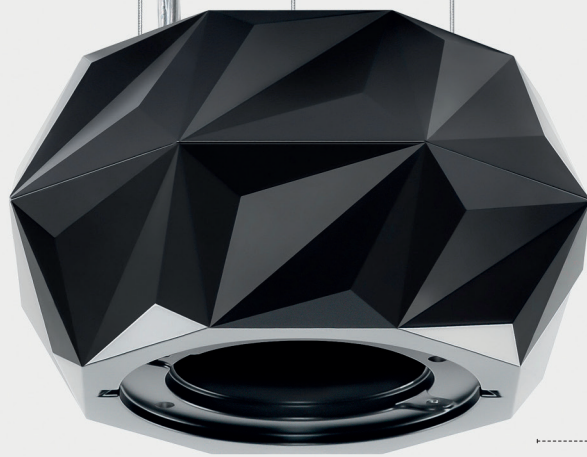
| GAMA 6 TH ELEMENT | | | | |
|------------------------------|--|---|---|--|
| |  |  |  |  |
| | 6 TH ELEMENT FIX | 6 TH ELEMENT | 6 TH ELEMENT / C | 6 TH ELEMENT / W |
| Tipo de Aplicación |  |  |  |  |
| Distribución de Luz |  |  50%  50% |  |  50%  50% |
| Dimensiones | 140x140x87 mm | 140x140x80 mm | 140x140x60 mm | 140x160x80 mm |
| Sistema Óptico | Lente 50°  Lente 80°  DOZ  DPT  | | | |
| Temperatura de Color | 3000K 4000K | | | |
| Acabado | ○ Blanco ● Gris ● Negro ● Rusty chain | | | |
| Base de Techo/Pared | -- |  |  |  |
| Cable de Seguridad | ✓ | -- | | |
| CRI | CRI>80 CRI>90 | | | |

TECNOLOGÍA Y MINIMALISMO

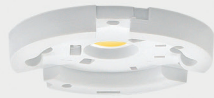


1 4 0 m m

Imagen en tamaño real



CUERPO
ALUMINIO
INYECTADO PINTADO
EN EPOXI-POLIÉSTER



LED



DOZ
DIFUSOR OPAL



DPT
DIFUSOR TRANSPARENTE



LENTE DE 80°



LENTE DE 50°



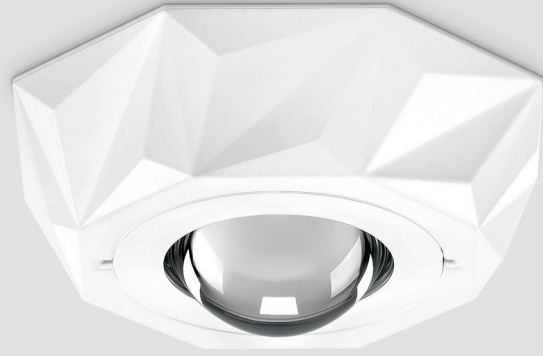
INSTALACIÓN
IMANES PARA LA
FIJACIÓN DEL ARO



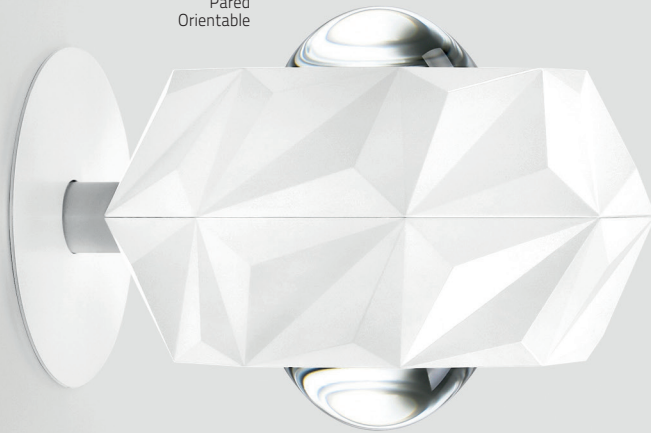
TAPA CIEGA

G A M A
6TH ELEMENT

6TH ELEMENT FIX
Superficie



6TH ELEMENT /W
Pared
Orientable



G A M A 6TH ELEMENT



6TH ELEMENT FIX



6TH ELEMENT



6TH ELEMENT /C



6TH ELEMENT /W

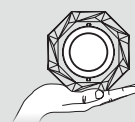


6TH ELEMENT
Suspendida



6TH ELEMENT /C
Superficie
Orientable

TAMAÑO
DISPONIBLE



Ø 140 mm

CREE ESPACIOS A
TRAVÉS DE LA LUZ







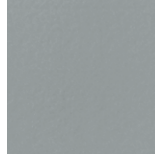


ACABADO

BLANCO



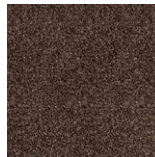
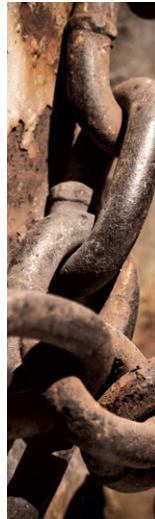
GRIS



NEGRO

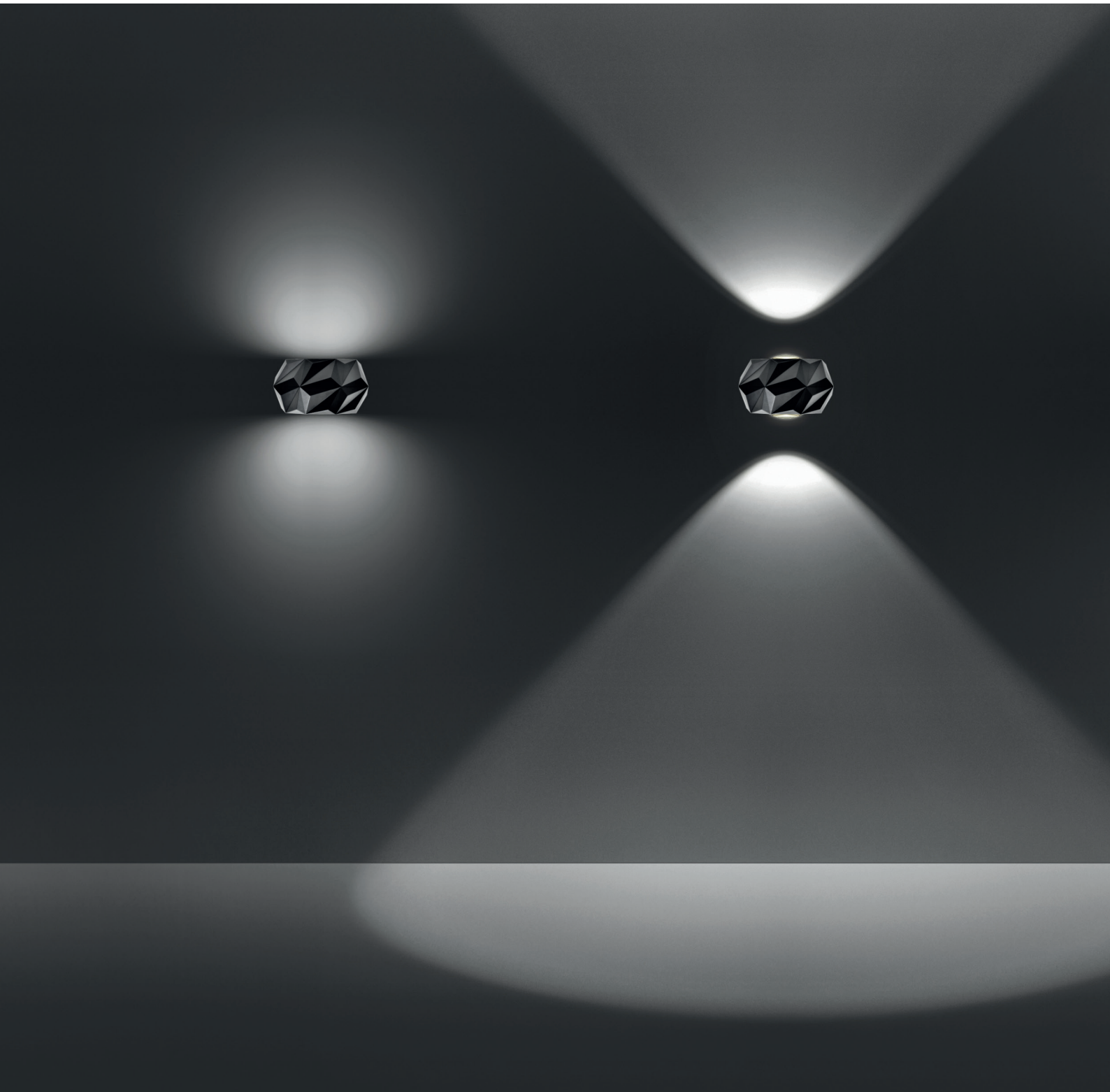


RUSTY CHAIN

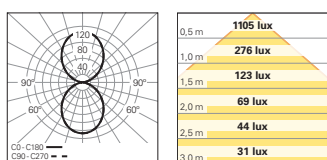




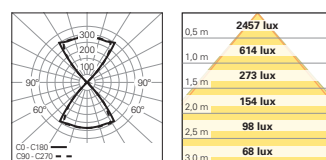
SISTEMA ÓPTICO

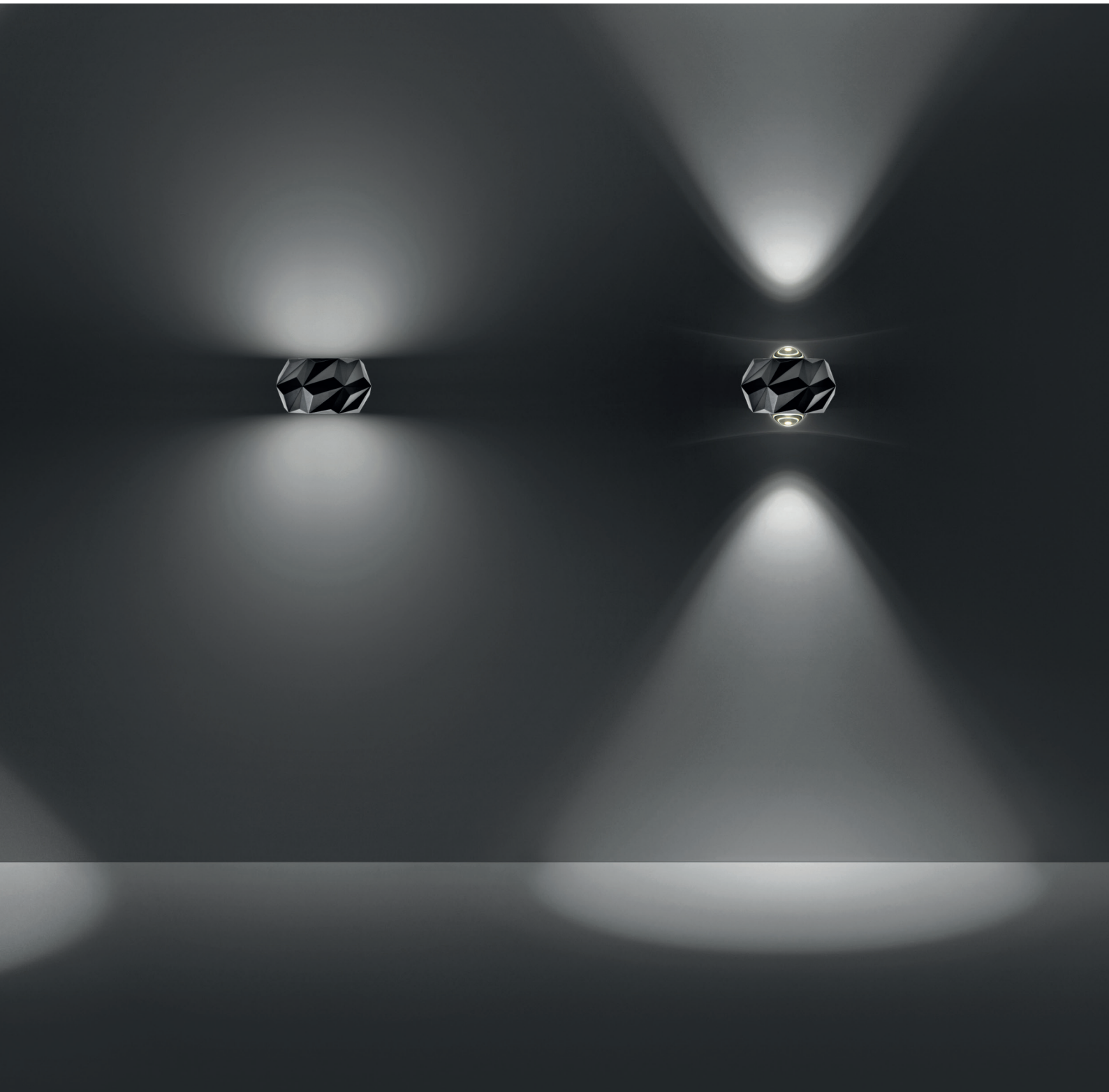


DOZ

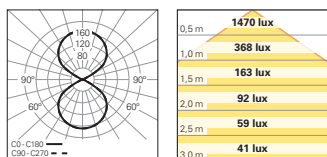


LENTE DE 50°

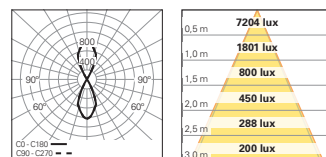




DPT

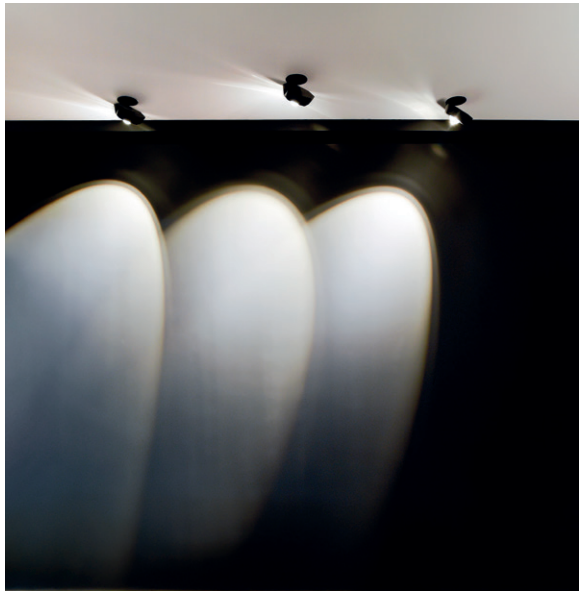
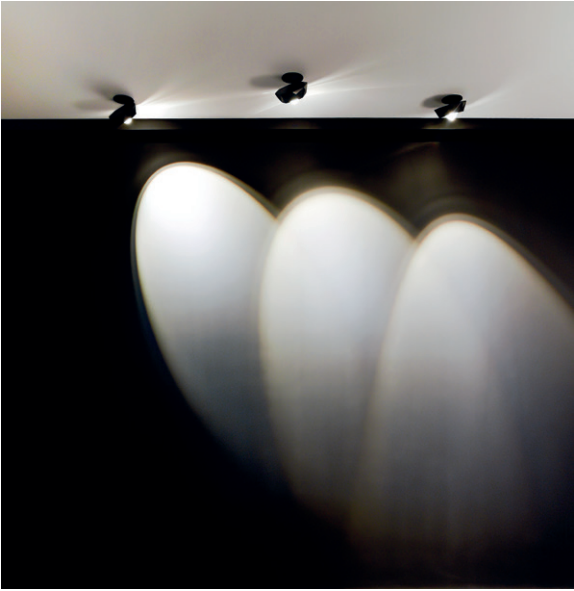
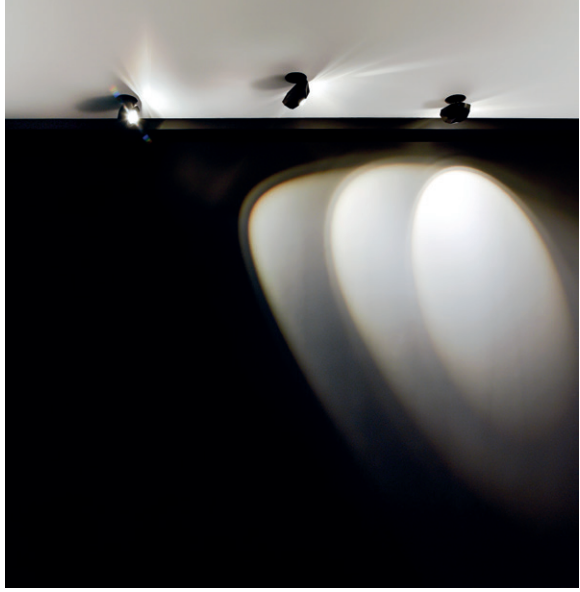


LENTE DE 80 °

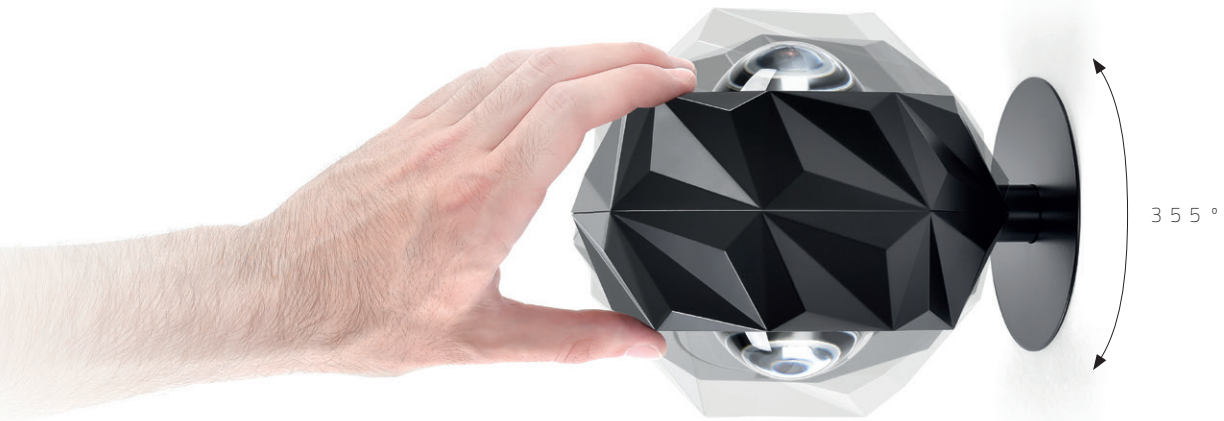


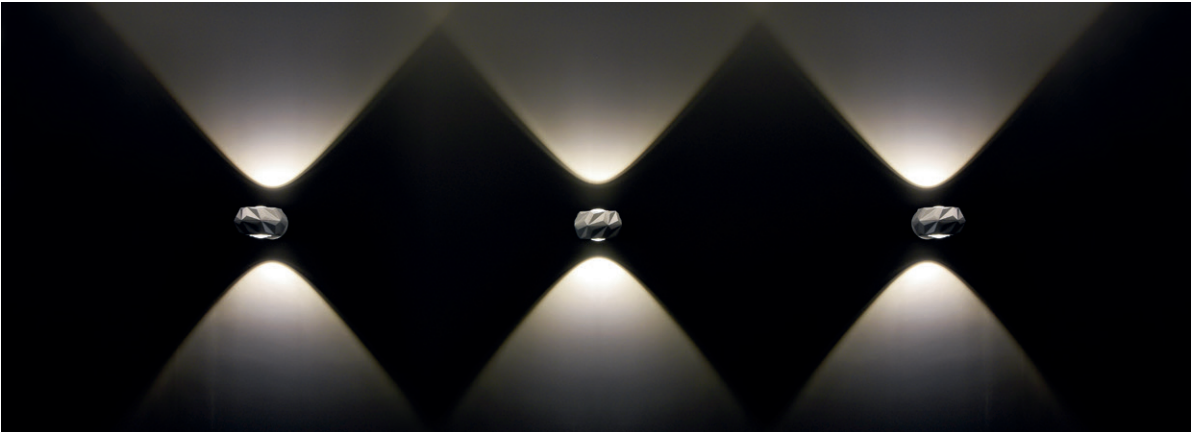
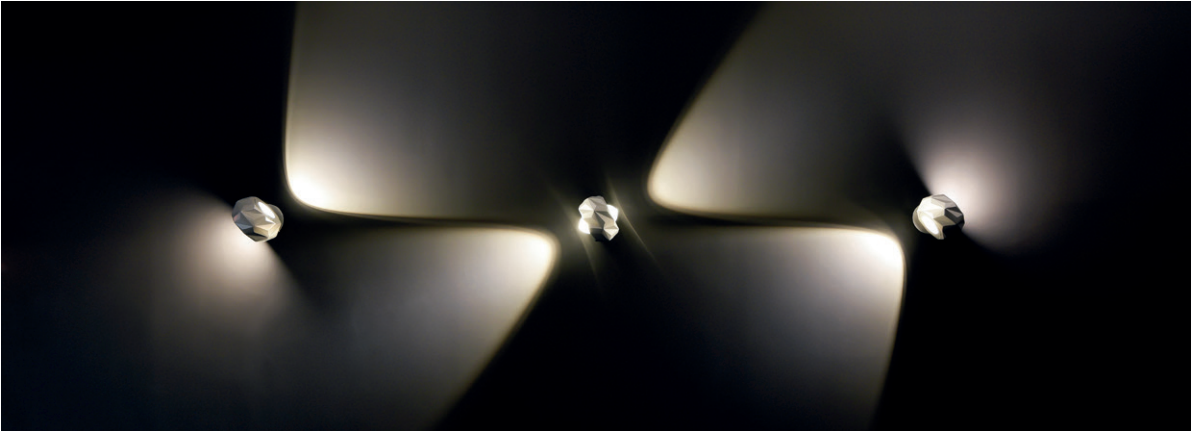
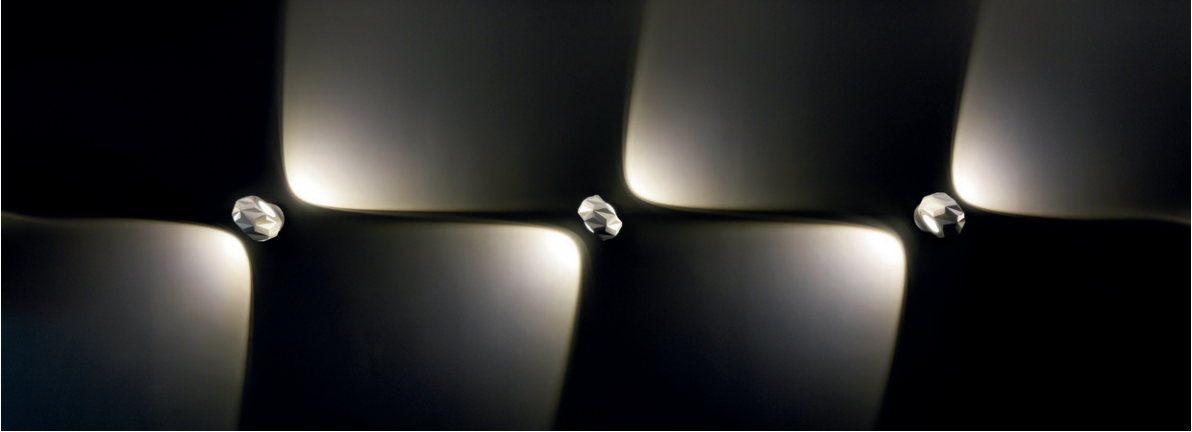
ORIENTABLE
DE TECHO





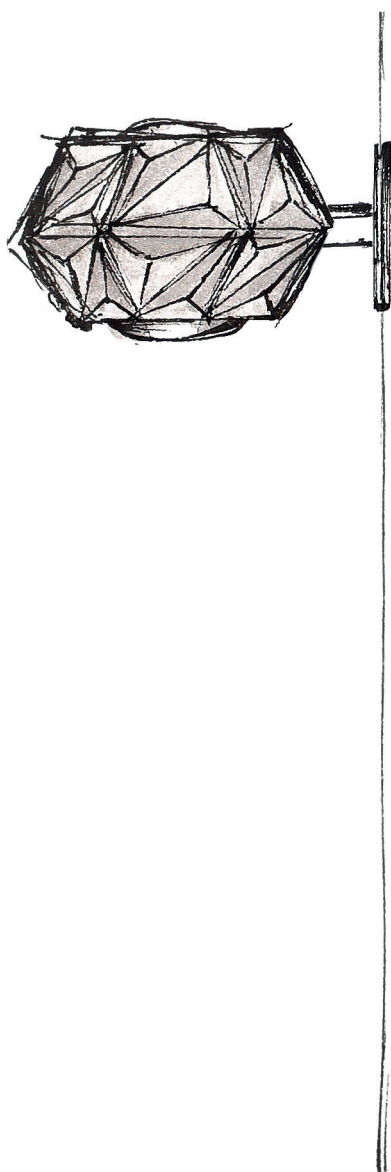
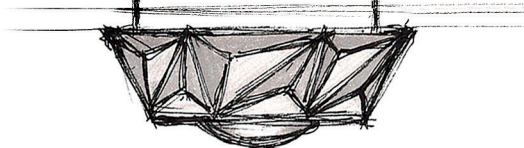
ORIENTABLE
DE PARED











GRUPO INDELAGUE

SEDE

INDÚSTRIA ELÉTRICA DE ÁGUEDA S.A.
Rua da Mina 465 | Covão
Zona industrial EN1 Norte
Apartado 106 / 3754-909
3750-792 Trofa
ÁGUEDA | PORTUGAL
GPS. 40°36'5.84"N 8°27'4.38"W
T. +351 234 612 310 | F. +351 234 624 058
indelague@indelague.pt
WWW.INDELAGUE.COM

UNITED KINGDOM

ROXO LIGHTING LIMITED
roxo.london@roxolighting.com
WWW.ROXOLIGHTING.COM

ESPAÑA

INDELAGUE ESPAÑA, S.L.
Avenida del Ejército, nº 8 - 1º C
C.P. 15006 | A CORUÑA | ESPAÑA
comercial@indelague.com
WWW.INDELAGUE.COM

Todos los datos contenidos en este documento no constituyen ningún tipo de compromiso por parte de INDELAGUE - Industria Eléctrica de Águeda, S.A.. La empresa, se reserva el derecho de cambiar o modificar cualquier información técnica declarada sin previo aviso. Se prohíbe la reproducción de este documento o parte del mismo. Los datos eléctricos/ópticos están sujetos a una tolerancia del +/- 10%. La temperatura de color está sujeta a una tolerancia de +/- 150°K, excepto cuando se especifique claramente. Todos los valores se aplican a una temperatura ambiente de 25°C.

Cofinanciado por:



UNIÃO EUROPEIA
Fundo Europeu
de Desenvolvimento Regional