



6th Element

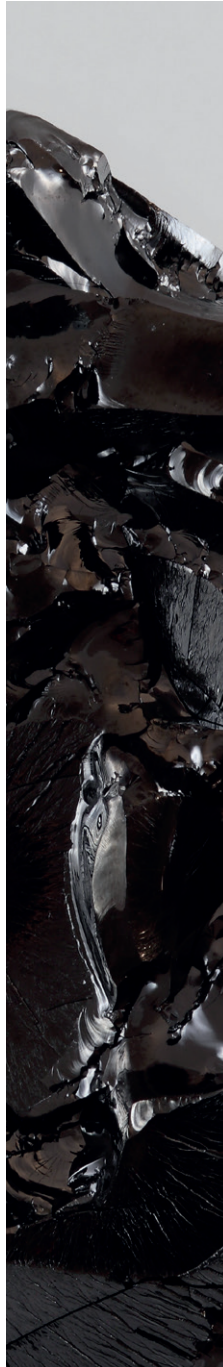
GROUPE INDELAGUE

CONCEPT ET INSPIRATION

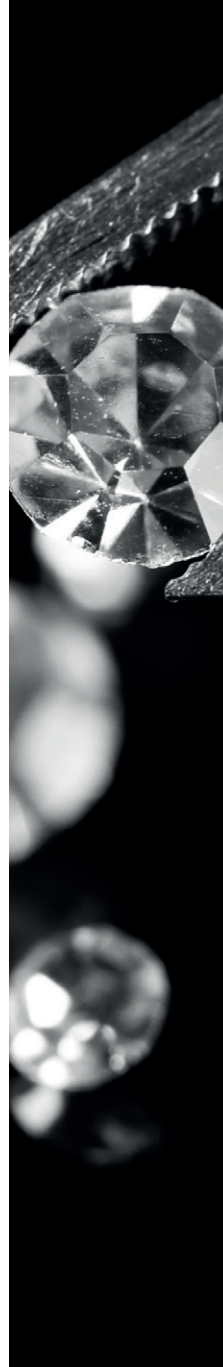
ETOILE FILANTE

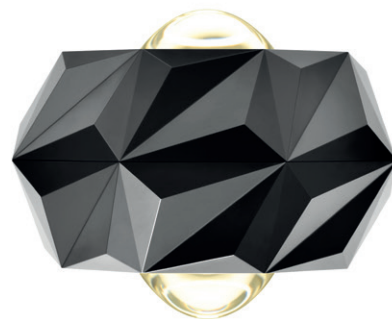
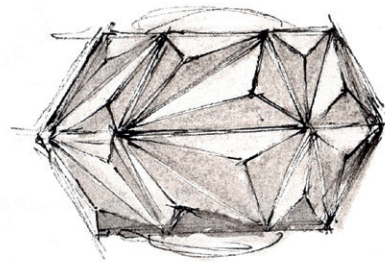
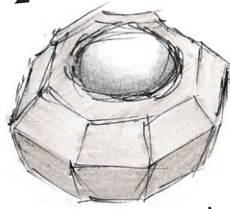


CARBONE



DIAMANT
























6TH
ELEMENT
GAMME



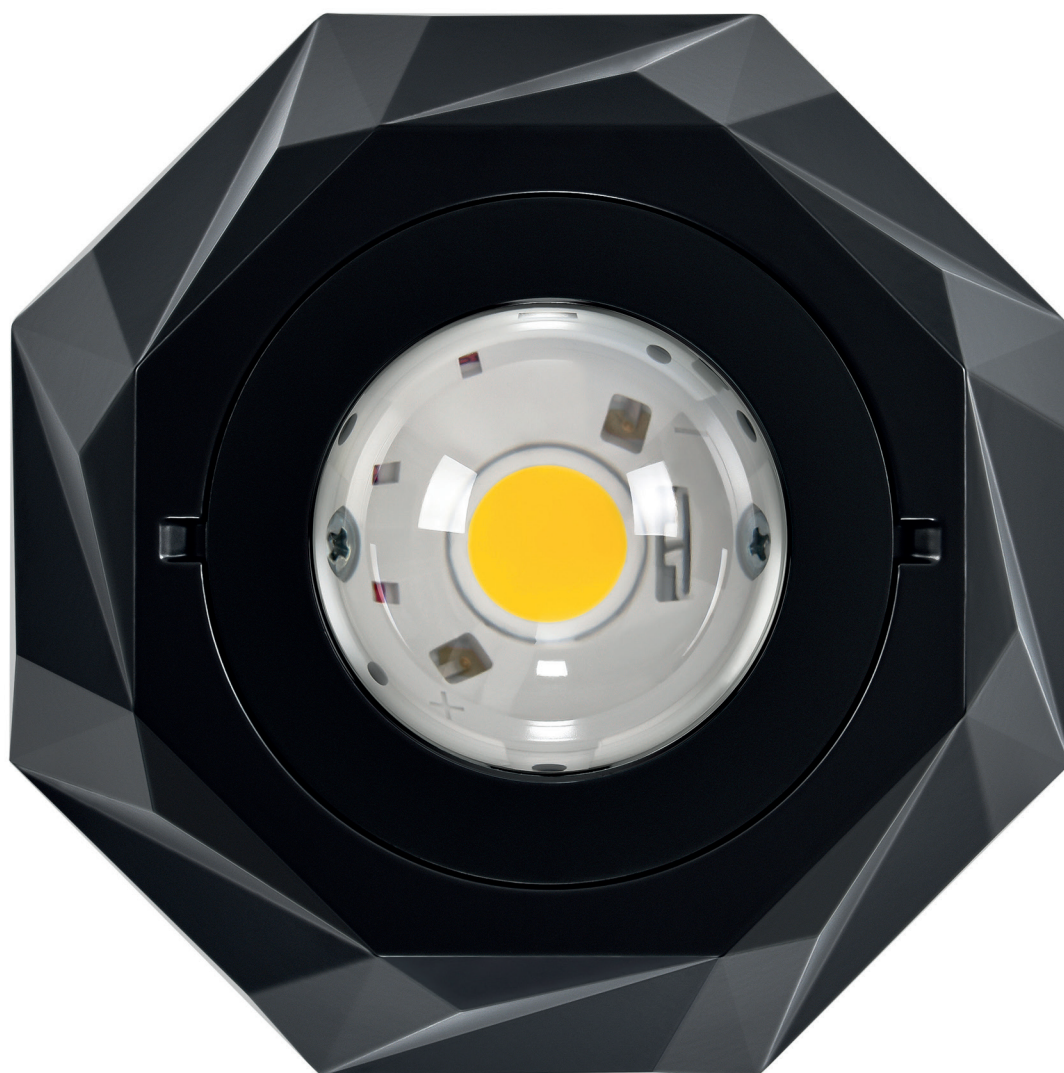
GERMAN
DESIGN
AWARD
SPECIAL
2017



LA GAMME

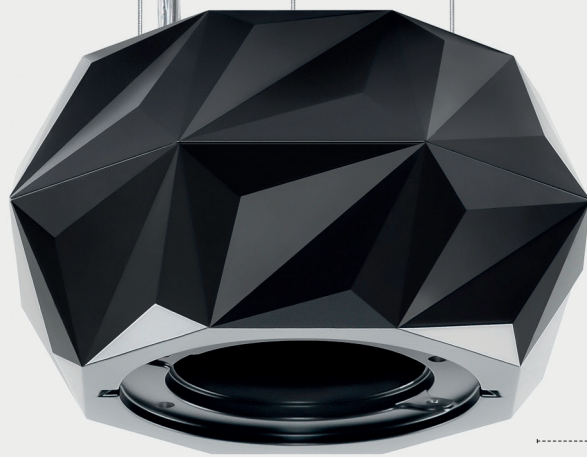
GAMME 6 TH ELEMENT				
				
	6TH ELEMENT FIX	6TH ELEMENT	6TH ELEMENT / C	6TH ELEMENT / W
Type d'Application				
Distribution de Lumière		50%  50%		50%  50%
Dimensions	140x140x87 mm	140x140x80 mm	140x140x60 mm	140x160x80 mm
Système Optique	Lentille 50°  Lentille 80°  DOZ  DPT 			
Température de Couleur	3000K 4000K			
Finitions	○ Blanc ● Gris ● Noir ● Rusty chain			
Patère	--			
Filin d'Acier	✓	--		
CRI	CRI>80 CRI>90			

TECHNOLOGIE ET MINIMALISME

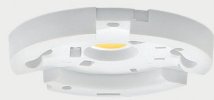


1 4 0 m m

Illustré en dimension réelle



CORPS
ALUMINIUM INJECTE
REVETU DE POUDRE
EPOXY POLYESTER



LED



DOZ
DIFFUSEUR OPALE



DPT
DIFFUSEUR TRANSPARENT



LENTILLE 80°



LENTILLE 50°



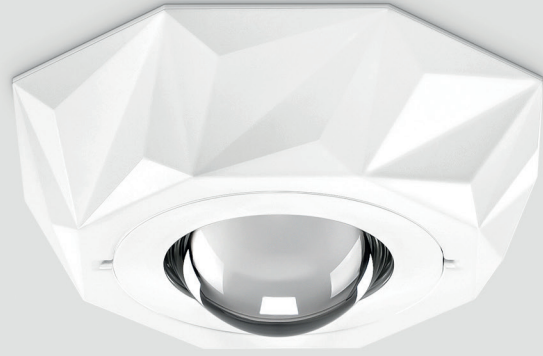
SYSTEME
DE FIXATION
MAGNETS POUR FIXATION
DU CADRE METALLIQUE



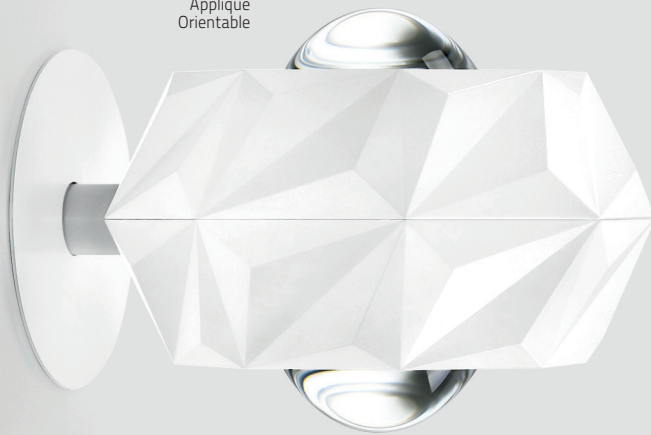
COUVERCLE

GAMME
6TH ELEMENT

6TH ELEMENT FIX
Saillie



6TH ELEMENT /W
Applique
Orientable



GAMME 6TH ELEMENT



6TH ELEMENT FIX



6TH ELEMENT



6TH ELEMENT /C



6TH ELEMENT /W

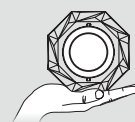


6TH ELEMENT
Suspendu



6TH ELEMENT / C
Saillie
Orientable

— DIMENSION
DISPONIBLE —



Ø 140 mm

CREATION D'ESPACES A
TRAVERS DE LA LUMIERE









FINITIONS

BLANC



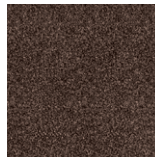
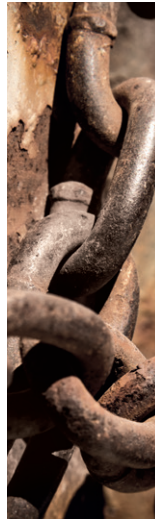
GRIS



NOIR

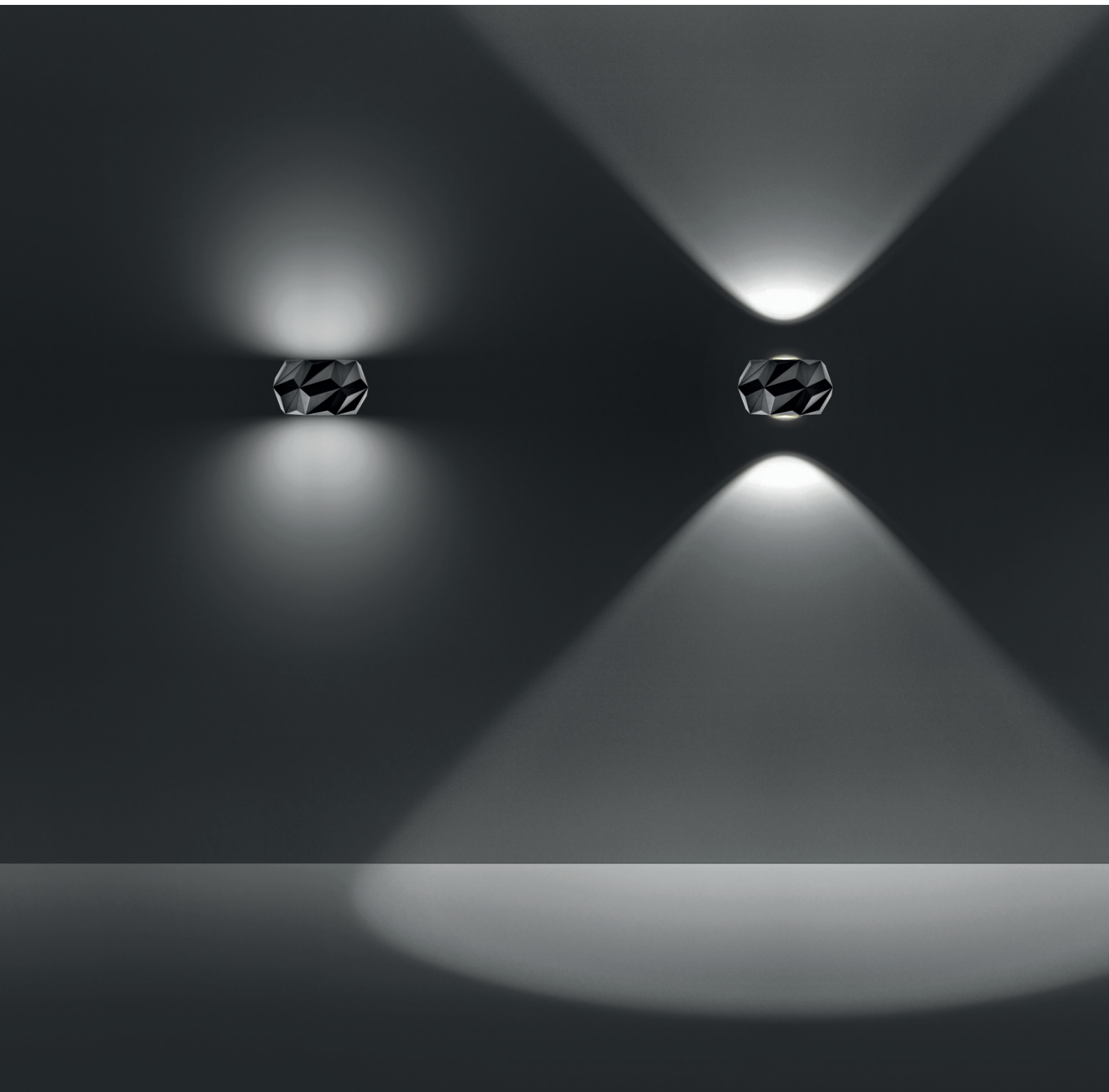


RUSTY CHAIN

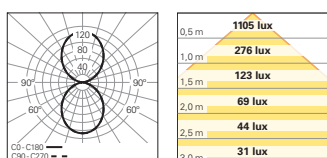




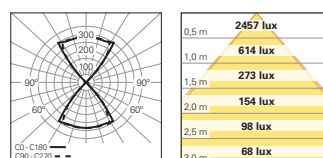
SYSTEME D'OPTIQUE

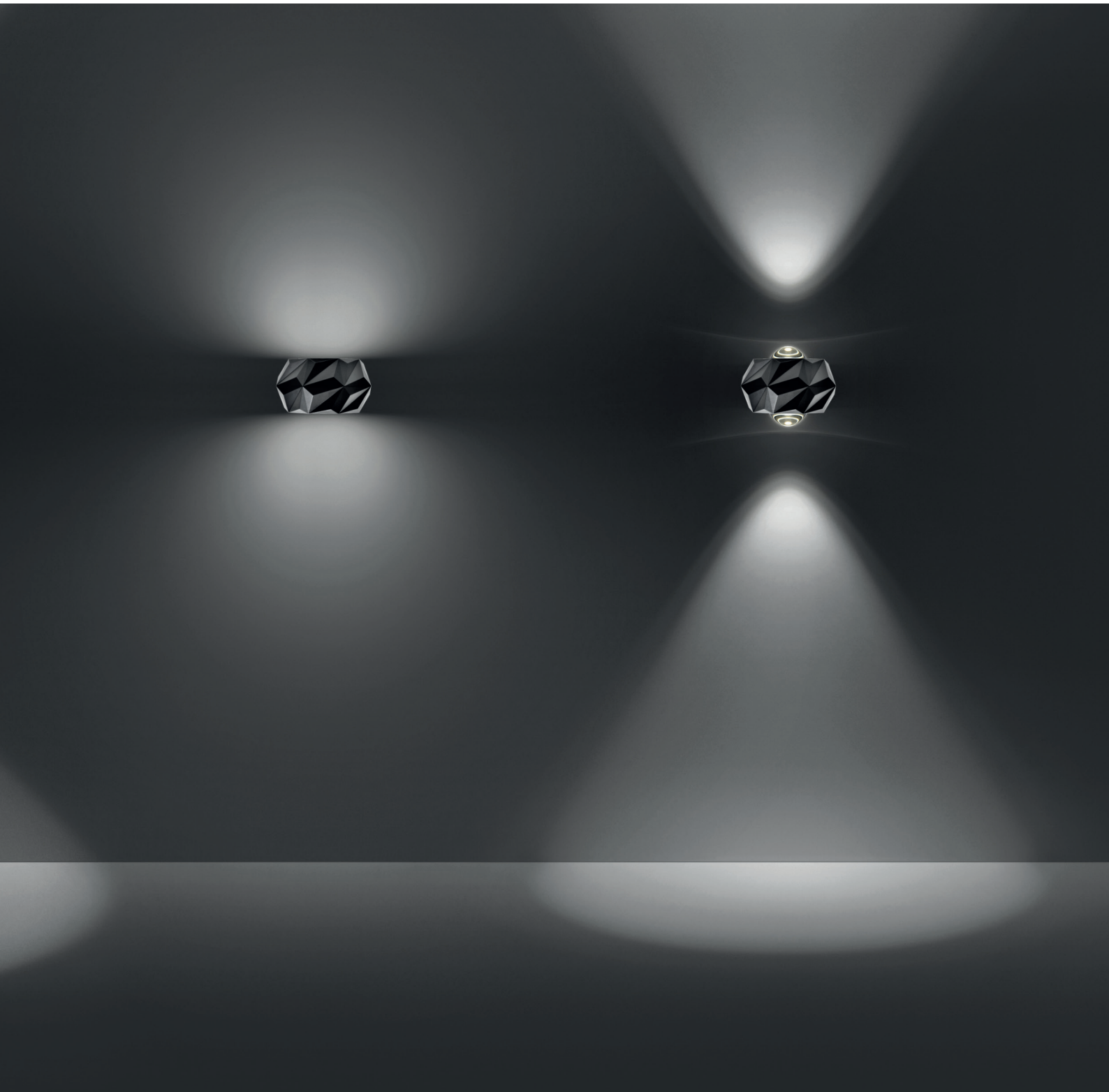


DOZ

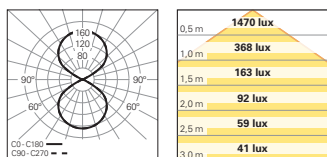


LENTILLE 50°

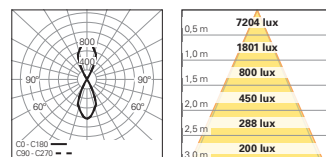




DPT

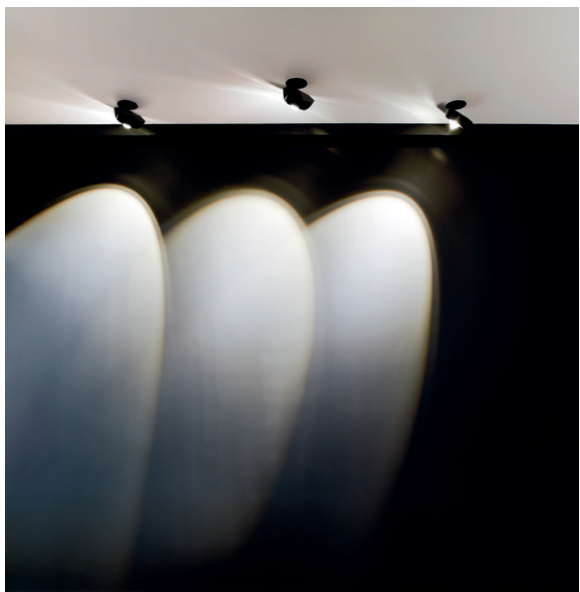
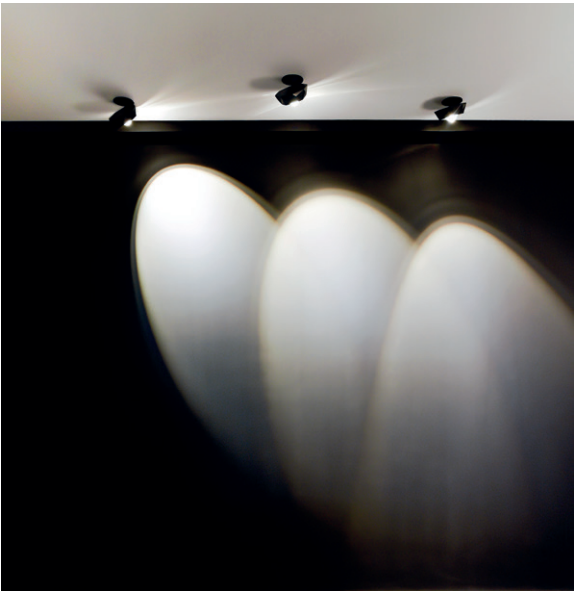
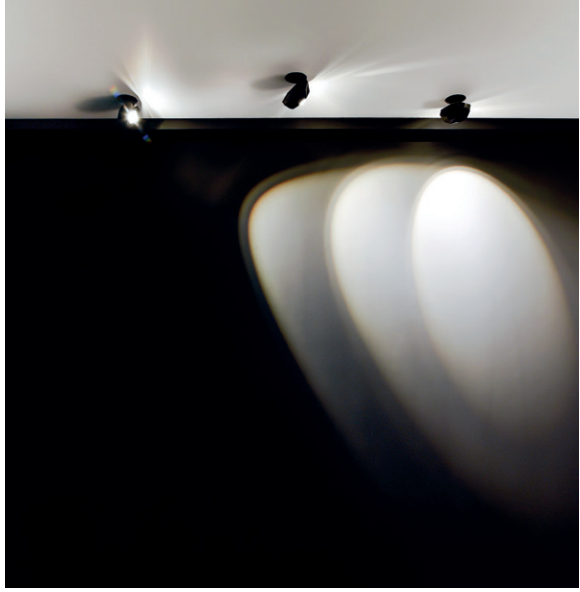


LENTILLE 80°

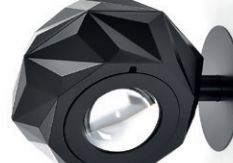
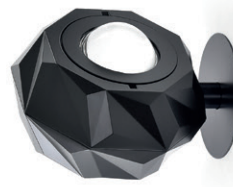
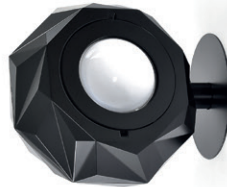
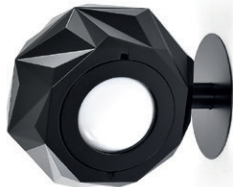
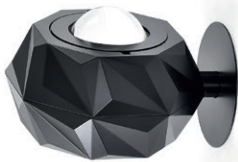
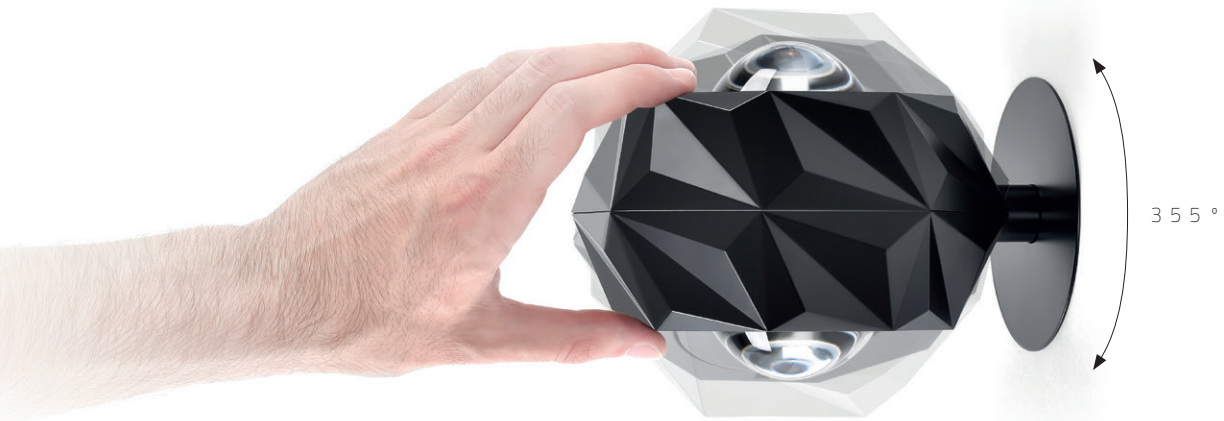


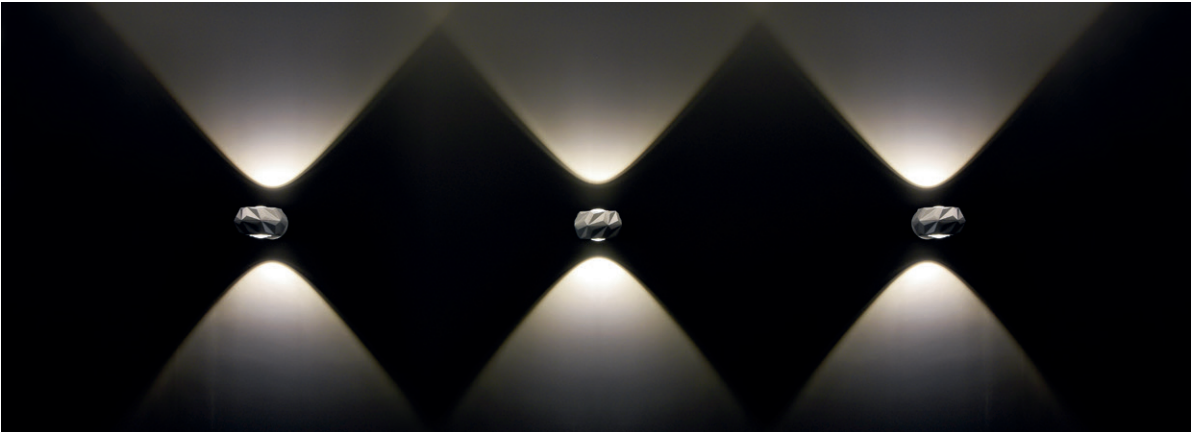
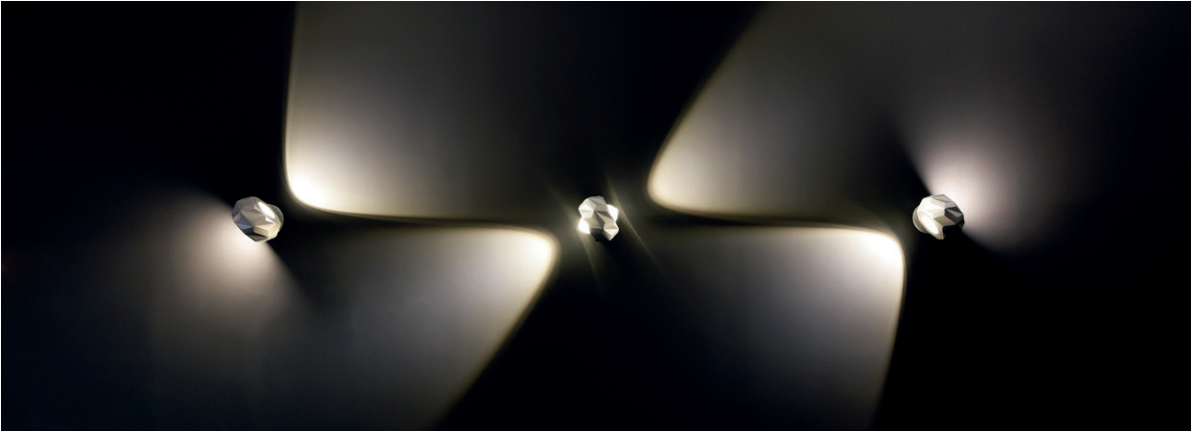
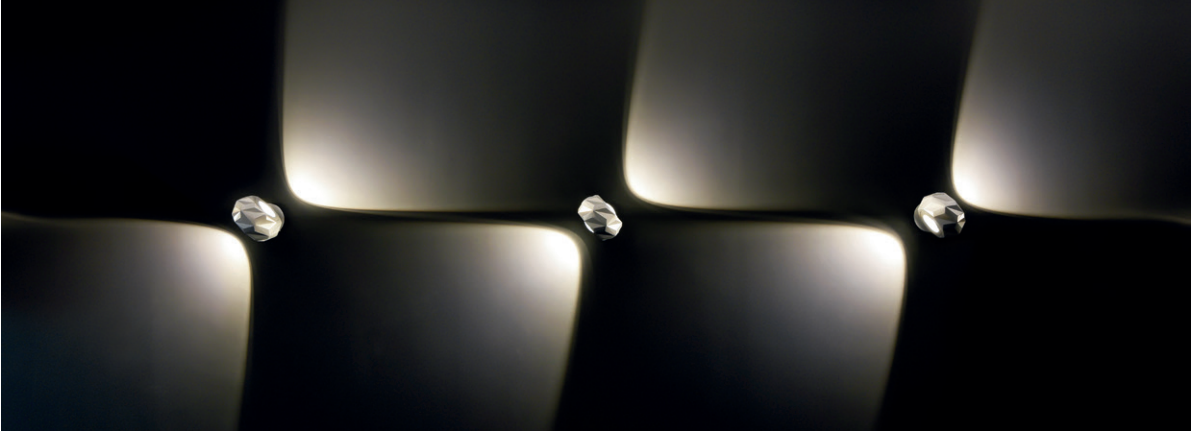
SAILLIE
ORIENTABLE





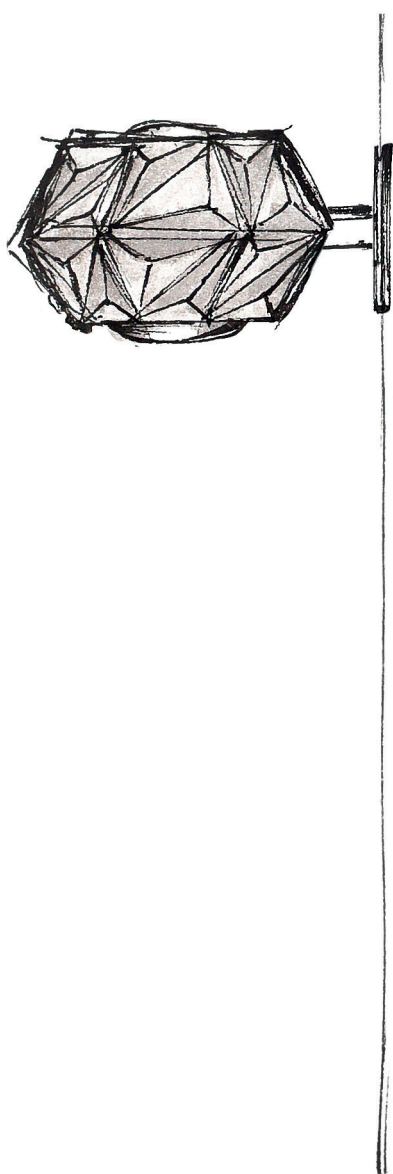
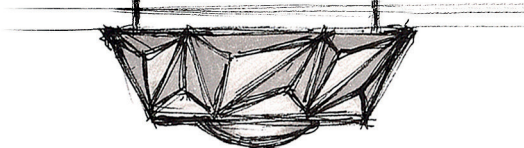
APPLIQUE
ORIENTABLE











GRUPE INDELAGUE

SIEGE

INDÚSTRIA ELÉTRICA DE ÁGUEDA S.A.
Rua da Mina 465 | Covão
Zona industrial EN1 Norte
Apartado 106 / 3754-909
3750-792 Trofa
ÁGUEDA | PORTUGAL
GPS. 40°36'5.84"N 8°27'4.38"W
T. +351 234 612 310 | F. +351 234 624 058
indelague@indelague.pt
WWW.INDELAGUE.COM

ROYAUME-UNI

ROXO LIGHTING LIMITED
roxo.london@roxolighting.com
WWW.ROXOLIGHTING.COM

ESPAGNE

INDELAGUE ESPAÑA, S.L.
Avenida del Ejército, n° 8 - 1° C
C.P. 15006 | A CORUÑA | ESPAÑA
comercial@indelague.com
WWW.INDELAGUE.COM

Toutes les données contenues dans cette brochure ne constituent pas un engagement pour INDELAGUE - Indústria Eléctrica de Águeda, SA. La société se réserve le droit de changer ou de modifier toute information sans préavis. La reproduction de cette brochure ou une partie de celui-ci est interdite. Données électriques/optiques = +/-10%. Température de couleur sous réserve de tolérance de +/- 150K, à moins que se soit clairement spécifié. Toutes les valeurs sont valables pour une température ambiante de 25°C.

Cofinanciado por:



UNIÃO EUROPEIA
Fundo Europeu
de Desenvolvimento Regional