



LED



Norms: EN 60598-1, EN 60598-2-2



IP 20

230V/50Hz

PRODUCT DESCRIPTION

Areas of Application: Industrial areas, commercial areas.

Mounting: Ceiling recessed.

Light Distribution: Direct.

Light Source: LED 4000K, CRI >80, 50.000h life.

Control Gear: LED driver, 220-240VAC-50/60Hz.

Wiring: Three-circuit.

Materials: Body: Steel sheet.
Diffuser: Opal PMMA diffuser.

Surface Finish: Powder coated in white matt (RAL9016).

Fixing system: Brackets.

ACM - Symmetric reflector with opal diffuser



LED	W	Lm	Lm/W	η(%)	AxBxC (mm)	B1 (mm)	f	K1	K3	Kg	HF	DALI
	1x19	2730	106	83	590x149x107	128	590x130	-	-	2,3	9Z5K.119.6Y.F4	9Z5K.119.6Y.E4
	1x39	5460	108	85	1150x149x107	128	1150x130	-	-	4,4	9Z5K.139.6Y.F4	9Z5K.139.6Y.E4
	1x58	8190	108	85	1710x149x107	128	1750x130	•	•	6,4	9Z5K.158.6Y.F4	9Z5K.158.6Y.E4

AWM - Asymmetric reflector with opal diffuser



LED	W	Lm	Lm/W	η(%)	AxBxC (mm)	B1 (mm)	f	K1	K3	Kg	HF	DALI
	1x19	2730	103	81	590x149x107	128	590x130	-	-	2,4	9Z5K.119.8C.F4	9Z5K.119.8C.E4
	1x39	5460	102	80	1150x149x107	128	1150x130	-	-	4,5	9Z5K.139.8C.F4	9Z5K.139.8C.E4
	1x58	8190	101	79	1710x149x107	128	1750x130	•	•	6,5	9Z5K.158.8C.F4	9Z5K.158.8C.E4

Please note: To complete a line, Start Kit will be necessary. Please order separately.
The 19W version is only available as end part of the line.

OPTIONS

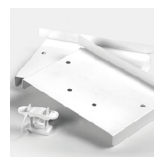
Colour temperature



3000K

Order code
3000

Start Kit



Start Kit for symmetric or asymmetric reflector

• Two end caps and one cable lock, includes screws.

Order code
920900

Example code for order: (3x) 9Z5K.139.6Y.E4 (DALI) + 3000 + 920900 + (2x) 965200 (OPTIONS)

We reserve the right to make technical changes without prior notice.
Electrical/Optical data are subjected to a tolerance of +/-10%.

Connectors



KIT 7-pole WAGO (male and female)
 Connector 7-pole WAGO male
 Connector 7-pole WAGO female

Order code
965200
965201
965202

Emergency unit



Emergency unit 3 hours
 Emergency unit 1 hour

• Only available for 58w version.

Order code
K3
K1

DETAILS



Asymmetric detail



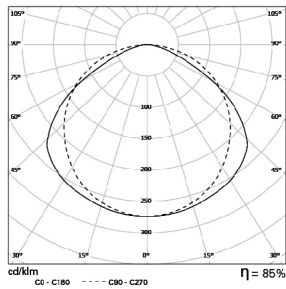
LED detail



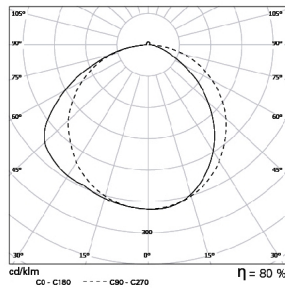
Bracket detail

PHOTOMETRY

AIL/E LED Line 1x39W ACM LED



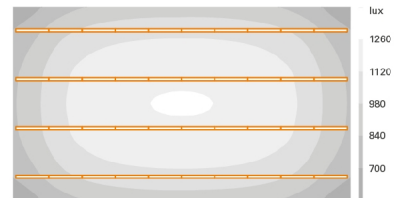
AIL/E LED Line 1x39W AWM LED



PERFORMANCE

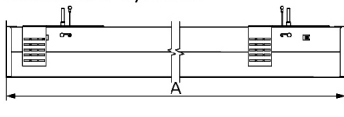
AIL /E LED Line ACM

LED: 1 x 58W
 SPACING: 17,5m x 10m
 CEILING HEIGHT: 4,5m
 MAINTENANCE: 0,8
 REFLECTANCE: 20/70/50
 WORKING PLANE: 1m
 ILLUMINANCE: 1044 lux

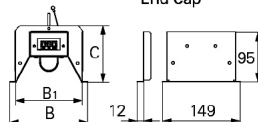


DIMENSIONS

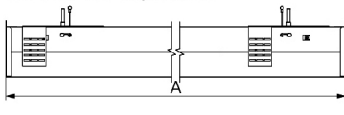
AIL/E LED Line - Symmetric



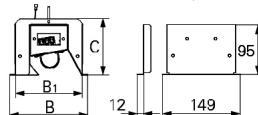
End Cap



AIL/E LED Line - Asymmetric



End Cap



Please note: Recessed dimensions without end caps, add 10 mm to complete the line.

TO SPECIFY:

Recessed LED luminaire for continuous line with symmetric/asymmetric version and opal PMMA diffuser. Total luminous flux of 2730/5460/8190 lm version and integral HF/DALI LED driver. Optional 1 or 3 hours emergency available - as Roxo Lighting AIL/E LED Line.