

Norms: EN 60598-1, EN 60598-2-1



### PRODUCT DESCRIPTION

**Areas of Application:** Commercial and Business areas, Public buildings, Housing, Offices, Hotel and Restaurant services, Art and Culture spaces.

**Mounting:** Wall Mounted.

**Light Distribution:** Indirect.

**Light Source:** T5 (G5) or TC-L (2G11) lamp.

**Control Gear:** Electronic equipment, 220-240VAC-50/60Hz.

**Materials:** Body: Steel sheet.

**Surface Finish:** Powder coated.

LAMP*	W	W	AxBxC (mm)	Kg	HF	DALI
TC-L	2G11	2x24	500x250x110	3,5	90011.M224.A	90011.M224.D
	2G11	2x36	500x250x110	3,5	90011.M236.A	90011.M236.D
	2G11	2x55	700x250x110	4,2	90011.M255.A	90011.M255.D
T5	G5	1x14	650x184x95	3,7	90011.P114.A	90011.P114.D
	G5	1x21	950x184x95	4,9	90011.P121.A	90011.P121.D
	G5	1x24	650x184x95	3,7	90011.P124.A	90011.P124.D
	G5	1x39	950x184x95	4,9	90011.P139.A	90011.P139.D

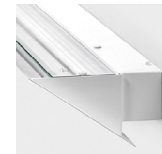
### COLOUR / FINISH

Code	Description
W	White (RAL 9016)
B	Black (RAL 9005)
G	Grey (RAL 9006)

### OPTIONS

Code	Description
003	Transparent glass.
002	Opal glass.
K3	Emergency unit 3 hours.
K1	Emergency unit 1 hour.

### DETAILS



Product detail

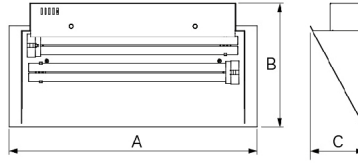
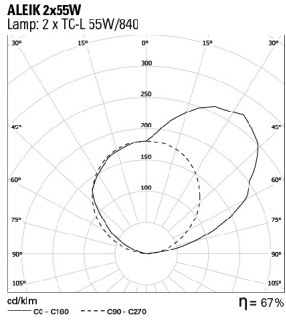
\* Lamp not included.

Example code for order: 90011.M224.D (DALI) + W (COLOUR/FINISH) + 003 (OPTIONS)

We reserve the right to make technical changes without prior notice. Electrical/Optical data are subjected to a tolerance of +/-10%.

**PHOTOMETRY**

**DIMENSIONS**



**TO SPECIFY:**

Wall mounted slim upright luminaire with indirect lighting effect. Single 14/21/24/39W T5(G5) lamp or twin 24/36/55W TC-L (2G11) lamp - as Roxo Lighting ALEIK.

We reserve the right to make technical changes without prior notice. Electrical/Optical data are subjected to a tolerance of +/-10%.