



Norms: EN 60598-1, EN 60598-2-1



**PRODUCT DESCRIPTION**

**Areas of Application:** Commercial and Business areas, Public buildings, Offices, Schools, Corridors.

**Mounting:** Surface/Suspended.


**Light Distribution:** Direct.

**Control Gear:** Electronic equipment, 220-240VAC-50/60Hz.


**Materials:** Body: Extruded aluminium profile.

**Surface Finish:** Powder coated in white matt (RAL9016).

**PB - Polished double parabolic louvre**

	LAMP*	UGR	W	Lm/W	η(%)	AxBxC (mm)	K1	K3	Kg	HF	DSI	DALI
	T5	≤19	1x28	67	78	1281x204x55	-	-	4,0	9R05.128.81.A4	9R05.128.81.84	9R05.128.81.74
		≤19	1x35	83	83	1581x204x55	-	-	4,5	9R05.135.81.A4	9R05.135.81.84	9R05.135.81.74
		≤19	1x49	63	77	1581x204x55	-	-	4,5	9R05.149.81.A4	9R05.149.81.84	9R05.149.81.74
		≤19	1x54	60	77	1281x204x55	-	-	4,0	9R05.154.81.A4	9R05.154.81.84	9R05.154.81.74
		≤19	1x80	61	84	1581x204x55	-	-	4,5	9R05.180.81.A4	9R05.180.81.84	9R05.180.81.74
		≤16	2x28	68	79	1281x381x55	•	•	5,5	9R05.228.81.A4	9R05.228.81.84	9R05.228.81.74
		≤16	2x35	70	80	1581x381x55	•	•	6,5	9R05.235.81.A4	9R05.235.81.84	9R05.235.81.74
		≤19	2x49	64	79	1581x381x55	•	•	6,5	9R05.249.81.A4	9R05.249.81.84	9R05.249.81.74
		≤19	2x54	62	79	1281x381x55	•	•	5,5	9R05.254.81.A4	9R05.254.81.84	9R05.254.81.74
		≤19	2x80	55	77	1581x381x55	•	•	6,5	9R05.280.81.A4	9R05.280.81.84	9R05.280.81.74

**PM - Satin double parabolic louvre**

	LAMP*	UGR	W	Lm/W	η(%)	AxBxC (mm)	K1	K3	Kg	HF	DSI	DALI
	T5	≤16	1x28	56	66	1281x204x55	-	-	4,0	9R05.128.95.A4	9R05.128.95.84	9R05.128.95.74
		≤16	1x35	61	70	1581x204x55	-	-	4,5	9R05.135.95.A4	9R05.135.95.84	9R05.135.95.74
		≤19	1x49	55	66	1581x204x55	-	-	4,5	9R05.149.95.A4	9R05.149.95.84	9R05.149.95.74
		≤19	1x54	49	62	1281x204x55	-	-	4,0	9R05.154.95.A4	9R05.154.95.84	9R05.154.95.74
		≤19	1x80	51	71	1581x204x55	-	-	4,5	9R05.180.95.A4	9R05.180.95.84	9R05.180.95.74
		≤16	2x28	57	66	1281x381x55	•	•	5,5	9R05.228.95.A4	9R05.228.95.84	9R05.228.95.74
		≤16	2x35	59	68	1581x381x55	•	•	6,5	9R05.235.95.A4	9R05.235.95.84	9R05.235.95.74
		≤16	2x49	55	67	1581x381x55	•	•	6,5	9R05.249.95.A4	9R05.249.95.84	9R05.249.95.74
		≤19	2x54	52	66	1281x381x55	•	•	5,5	9R05.254.95.A4	9R05.254.95.84	9R05.254.95.74
		≤19	2x80	48	67	1581x381x55	•	•	6,5	9R05.280.95.A4	9R05.280.95.84	9R05.280.95.74

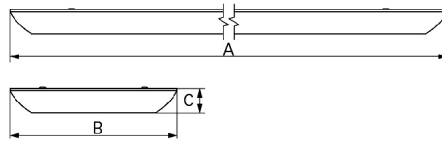
\* Lamp not included.  
Example code for order: 9R05.235.81.74 (DALI) + 910003 + BM + D/I (OPTIONS)

We reserve the right to make technical changes without prior notice.  
Electrical/Optical data are subjected to a tolerance of +/-10%.

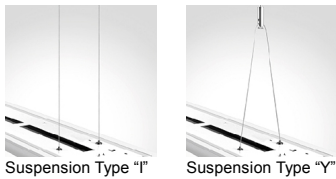
**OPTIONS**

Code	Description
--	Light and presence sensor.
910002	Suspension Type "I" (x4).
910003	Suspension Type "Y" (x2).
BM	Microperforated panel.
D/I	Direct and indirect light with 80:20 ratio.
K3	Emergency unit 3 hours.
K1	Emergency unit 1 hour.
--	Lamps as optional.

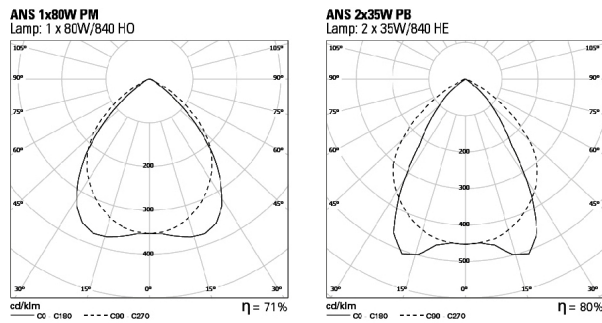
**DIMENSIONS**



**DETAILS**



**PHOTOMETRY**



**TO SPECIFY:**

Suspended T5(G5) luminaire in extruded aluminium profile, individually mounted with polished/satin high output aluminium louvre. Direct/indirect version with 80:20 ratio. Optional light/presence sensor, direct/indirect version, dimmable versions and 1 or 3 hours emergency available – as Roxo Lighting ANS.

We reserve the right to make technical changes without prior notice. Electrical/Optical data are subjected to a tolerance of +/-10%.