

Norms: EN 60598-1, EN 60598-2-25



PRODUCT DESCRIPTION

Areas of Application: Hospitals, Restaurant and Hotel services, Cleanrooms.

Mounting: Ceiling recessed.

Light Distribution: Direct.

Control Gear: Electronic equipment, 220-240VAC-50/60Hz.

Materials: Body: Steel sheet.
Frame: Extruded aluminium.

Surface Finish: Powder coated in white matt (RAL9016).

Fixing system: Lay-in version for exposed "T" grids 15/24mm.

PST - P-SILVER Double parabolic louvre with tempered glass

LAMP*	UGR	W	Lm/W	η(%)	AxBxC (mm)	A1	B1	Kg	HF	DSI	DALI
	≤19	2x28	69	80	1197x297x70	1174	274	8,7	9608.228.81.A4	9608.228.81.84	9608.228.81.74
	≤19	2x35	70	80	1497x297x70	1474	274	10,5	9608.235.81.A4	9608.235.81.84	9608.235.81.74
	≤19	2x49	65	80	1497x297x70	1474	274	10,5	9608.249.81.A4	9608.249.81.84	9608.249.81.74
	≤19	2x54	64	81	1197x297x70	1174	274	8,7	9608.254.81.A4	9608.254.81.84	9608.254.81.74
	≤19	2x80	59	82	1497x297x70	1474	274	10,5	9608.280.81.A4	9608.280.81.84	9608.280.81.74
	≤19	3x14	65	84	597x597x70	574	574	8,5	9608.314.81.A4	9608.314.81.84	9608.314.81.74
	≤19	3x24	62	88	597x597x70	574	574	8,5	9608.324.81.A4	9608.324.81.84	9608.324.81.74
	≤19	4x14	65	83	597x597x70	574	574	8,5	9608.414.81.A4	9608.414.81.84	9608.414.81.74
	≤22	4x24	62	86	597x597x70	574	574	8,5	9608.424.81.A4	9608.424.81.84	9608.424.81.74


PBT - Polished double parabolic louvre with tempered glass

LAMP*	UGR	W	Lm/W	η(%)	AxBxC (mm)	A1	B1	Kg	HF	DSI	DALI
	≤19	2x28	58	67	1197x297x70	1174	274	8,7	9608.228.85.A4	9608.228.85.84	9608.228.85.74
	≤19	2x35	59	68	1497x297x70	1474	274	10,5	9608.235.85.A4	9608.235.85.84	9608.235.85.74
	≤19	2x49	55	68	1497x297x70	1474	274	10,5	9608.249.85.A4	9608.249.85.84	9608.249.85.74
	≤19	2x54	53	67	1197x297x70	1174	274	8,7	9608.254.85.A4	9608.254.85.84	9608.254.85.74
	≤19	2x80	50	69	1497x297x70	1474	274	10,5	9608.280.85.A4	9608.280.85.84	9608.280.85.74
	≤19	3x14	56	73	597x597x70	574	574	8,5	9608.314.85.A4	9608.314.85.84	9608.314.85.74
	≤19	3x24	56	79	597x597x70	574	574	8,5	9608.324.85.A4	9608.324.85.84	9608.324.85.74
	≤19	4x14	57	73	597x597x70	574	574	8,5	9608.414.85.A4	9608.414.85.84	9608.414.85.74
	≤22	4x24	55	75	597x597x70	574	574	8,5	9608.424.85.A4	9608.424.85.84	9608.424.85.74


* Lamp not included.
Example code for order: 9609.280.81.74 (DALI) + 955000 + BM (OPTIONS)

We reserve the right to make technical changes without prior notice.
Electrical/Optical data are subjected to a tolerance of +/-10%.


PMT - Satin double parabolic louvre with tempered glass

	LAMP*	UGR	W	Lm/W	η(%)	AxBxC (mm)	A1	B1	Kg	HF	DSI	DALI
	T5	≤19	2x28	49	57	1197x297x70	1174	274	8,7	9608.228.98.A4	9608.228.98.84	9608.228.98.74
		≤19	2x35	50	57	1497x297x70	1474	274	10,5	9608.235.98.A4	9608.235.98.84	9608.235.98.74
		≤19	2x49	46	57	1497x297x70	1474	274	10,5	9608.249.98.A4	9608.249.98.84	9608.249.98.74
		≤19	2x54	43	55	1197x297x70	1174	274	8,7	9608.254.98.A4	9608.254.98.84	9608.254.98.74
		≤19	2x80	42	59	1497x297x70	1474	274	10,5	9608.280.98.A4	9608.280.98.84	9608.280.98.74
		≤19	3x14	48	62	597x597x70	574	574	8,5	9608.314.98.A4	9608.314.98.84	9608.314.98.74
		≤19	3x24	47	66	597x597x70	574	574	8,5	9608.324.98.A4	9608.324.98.84	9608.324.98.74
		≤19	4x14	48	61	597x597x70	574	574	8,5	9608.414.98.A4	9608.414.98.84	9608.414.98.74
		≤19	4x24	45	62	597x597x70	574	574	8,5	9608.424.98.A4	9608.424.98.84	9608.424.98.74

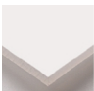
PBP - Polished double parabolic louvre with transparent polycarbonate diffuser

	LAMP*	UGR	W	Lm/W	η(%)	AxBxC (mm)	A1	B1	Kg	HF	DSI	DALI
	T5	≤19	2x28	58	67	1197x297x70	1174	274	6,7	9608.228.84.A4	9608.228.84.84	9608.228.84.74
		≤19	2x35	59	68	1497x297x70	1474	274	8,5	9608.235.84.A4	9608.235.84.84	9608.235.84.74
		≤19	2x49	55	68	1497x297x70	1474	274	8,5	9608.249.84.A4	9608.249.84.84	9608.249.84.74
		≤19	2x54	53	67	1197x297x70	1174	274	6,7	9608.254.84.A4	9608.254.84.84	9608.254.84.74
		≤19	2x80	50	69	1497x297x70	1474	274	8,5	9608.280.84.A4	9608.280.84.84	9608.280.84.74
		≤19	3x14	56	73	597x597x70	574	574	6,5	9608.314.84.A4	9608.314.84.84	9608.314.84.74
		≤19	3x24	56	79	597x597x70	574	574	6,5	9608.324.84.A4	9608.324.84.84	9608.324.84.74
		≤19	4x14	57	73	597x597x70	574	574	6,5	9608.414.84.A4	9608.414.84.84	9608.414.84.74
		≤22	4x24	55	75	597x597x70	574	574	6,5	9608.424.84.A4	9608.424.84.84	9608.424.84.74

PMP - Satin double parabolic louvre with transparent polycarbonate diffuser

	LAMP*	UGR	W	Lm/W	η(%)	AxBxC (mm)	A1	B1	Kg	HF	DSI	DALI
	T5	≤19	2x28	49	57	1197x297x70	1174	274	6,7	9608.228.97.A4	9608.228.97.84	9608.228.97.74
		≤19	2x35	50	57	1497x297x70	1474	274	8,5	9608.235.97.A4	9608.235.97.84	9608.235.97.74
		≤19	2x49	46	57	1497x297x70	1474	274	8,5	9608.249.97.A4	9608.249.97.84	9608.249.97.74
		≤19	2x54	43	55	1197x297x70	1174	274	6,7	9608.254.97.A4	9608.254.97.84	9608.254.97.74
		≤19	2x80	42	59	1497x297x70	1474	274	8,5	9608.280.97.A4	9608.280.97.84	9608.280.97.74
		≤19	3x14	48	62	597x597x70	574	574	6,5	9608.314.97.A4	9608.314.97.84	9608.314.97.74
		≤19	3x24	47	66	597x597x70	574	574	6,5	9608.324.97.A4	9608.324.97.84	9608.324.97.74
		≤19	4x14	48	61	597x597x70	574	574	6,5	9608.414.97.A4	9608.414.97.84	9608.414.97.74
		≤19	4x24	45	62	597x597x70	574	574	6,5	9608.424.97.A4	9608.424.97.84	9608.424.97.74

DOP - Opal polycarbonate diffuser

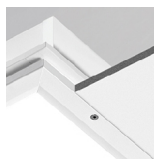
	LAMP*	UGR	W	Lm/W	η(%)	AxBxC (mm)	A1	B1	Kg	HF	DSI	DALI
	T5	≤22	2x28	50	58	1197x297x70	1174	274	6,3	9608.228.21.A4	9608.228.21.84	9608.228.21.74
		≤22	2x35	51	59	1497x297x70	1474	274	7,6	9608.235.21.A4	9608.235.21.84	9608.235.21.74
		≤22	2x49	46	57	1497x297x70	1474	274	7,6	9608.249.21.A4	9608.249.21.84	9608.249.21.74
		≤22	2x54	46	59	1197x297x70	1174	274	6,3	9608.254.21.A4	9608.254.21.84	9608.254.21.74
		≤25	2x80	45	62	1497x297x70	1474	274	7,6	9608.280.21.A4	9608.280.21.84	9608.280.21.74
		≤19	3x14	48	62	597x597x70	574	574	6	9608.314.21.A4	9608.314.21.84	9608.314.21.74
		≤22	3x24	47	66	597x597x70	574	574	6	9608.324.21.A4	9608.324.21.84	9608.324.21.74
		≤22	4x14	49	63	597x597x70	574	574	6	9608.414.21.A4	9608.414.21.84	9608.414.21.74
		≤22	4x24	46	64	597x597x70	574	574	6	9608.424.21.A4	9608.424.21.84	9608.424.21.74

We reserve the right to make technical changes without prior notice. Electrical/Optical data are subjected to a tolerance of +/-10%.

OPTIONS

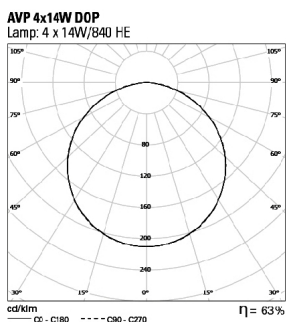
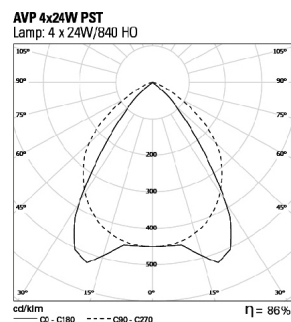
Code	Description
K3	Emergency unit 3 hours.
K1	Emergency unit 1 hour.
955000	Steel safety cable.
AS	Above ceiling access.
BM	Microperforated panel.
--	Lamps as optional.

DETAILS

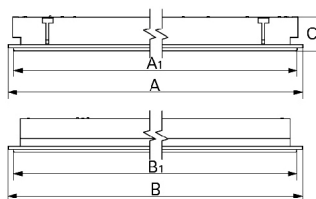


Lay-in version detail

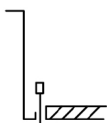
PHOTOMETRY



DIMENSIONS



FIXING SYSTEMS



Lay-in version
for exposed
T grids
15/24mm.

TO SPECIFY:

IP65 recessed T5(G5) clean room luminaire for modular ceilings.
Aluminium frame available with tempered glass or transparent polycarbonate in aggregation with high LOR louvre or opal diffuser.
Equipped with HF control gear. Above ceiling access, dimmable version and emergency also available – as Roxo Lighting AVT.

We reserve the right to make technical changes without prior notice.
Electrical/Optical data are subjected to a tolerance of +/-10%.