



Norms: EN 60598-1, EN 60598-2-25



PRODUCT DESCRIPTION

Areas of Application: Hospitals, Restaurant and Hotel services, Cleanrooms.

Mounting: Ceiling recessed.

Light Distribution: Direct.

Control Gear: Electronic equipment, 220-240VAC-50/60Hz.

Materials: Body: Steel sheet.
Frame: Extruded aluminium.

Surface Finish: Powder coated in white matt (RAL9016).

Fixing system: Pull-up version with brackets.

DCS - Micro-perforated central diffuser with tempered glass

LAMP*	UGR	W	η(%)	AxBxC (mm)	Kg		HF	DSI	DALI
TC-L	≤22	2x40	50	598x598x106	10		9424.240.13.A4	9424.240.13.84	9424.240.13.74
	≤22	2x55	45	598x598x106	10		9424.255.13.A4	9424.255.13.84	9424.255.13.74

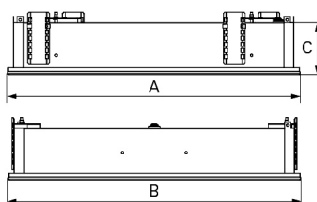
DCP - Micro-perforated central diffuser with transparent polycarbonate diffuser

LAMP*	UGR	W	η(%)	AxBxC (mm)	Kg		HF	DSI	DALI
TC-L	≤22	2x40	50	598x598x106	8,1		9424.240.2L.A4	9424.240.2L.84	9424.240.2L.74
	≤22	2x55	45	598x598x106	8,1		9424.255.2L.A4	9424.255.2L.84	9424.255.2L.74

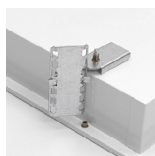
OPTIONS

Code	Description
955000	Steel safety cable.
--	Lamps as optional.

DIMENSIONS



DETAILS



IP65 brackets



Pull-up version detail



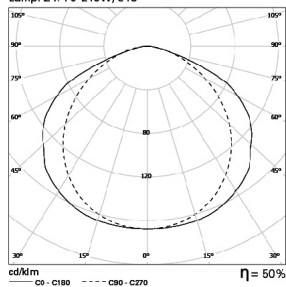
Security cable

* Lamp not included.
Example code for order: 9424.255.2L.74 (DALI) + 955000 (OPTIONS)

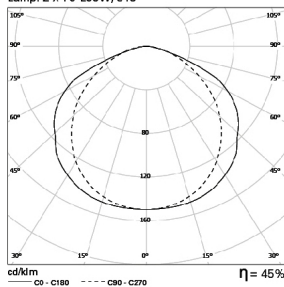
We reserve the right to make technical changes without prior notice.
Electrical/Optical data are subjected to a tolerance of +/-10%.

PHOTOMETRY

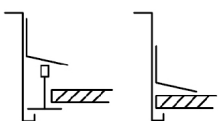
CHE 2x40W DCS
Lamp: 2 x TC-L40W/840



CHE 2x55W DCS
Lamp: 2 x TC-L55W/840



FIXING SYSTEMS



Pull-up version
with brackets
for exposed
T grids
15/24mm.

Pull-up
version with
brackets for
plasterboard
ceilings.

TO SPECIFY:

IP65 recessed modular compact fluorescent (TC-L) clean room luminaire. Aluminium frame, available with tempered glass or transparent polycarbonate diffuser. Equipped with HF control gear. Dimmable versions also available – as Indelague CHE.

We reserve the right to make technical changes without prior notice.
Electrical/Optical data are subjected to a tolerance of +/-10%.