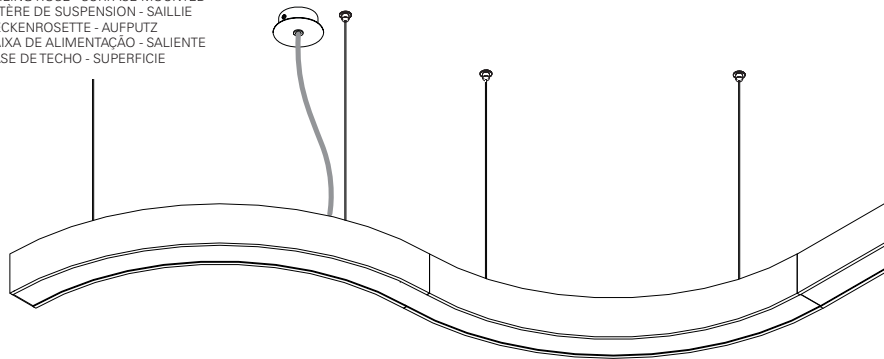


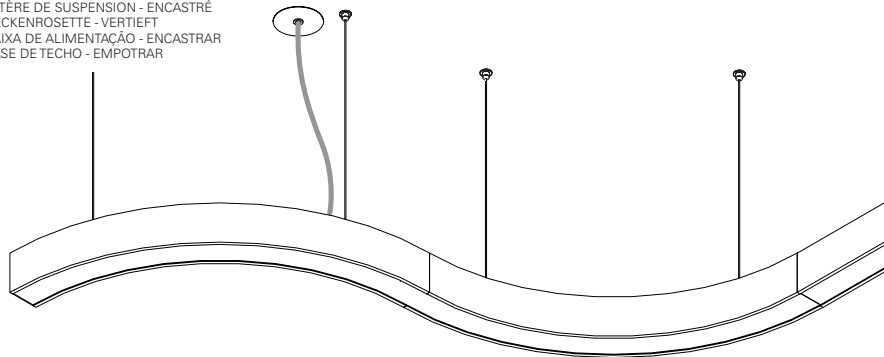
## 25 - CONCEPT S

CEILING ROSE - SURFACE MOUNTED  
PATÈRE DE SUSPENSION - SAILLIE  
DECKENROSETTE - AUFPUTZ  
CAIXA DE ALIMENTAÇÃO - SALIENTE  
BASE DE TETO - SUPERFICIE

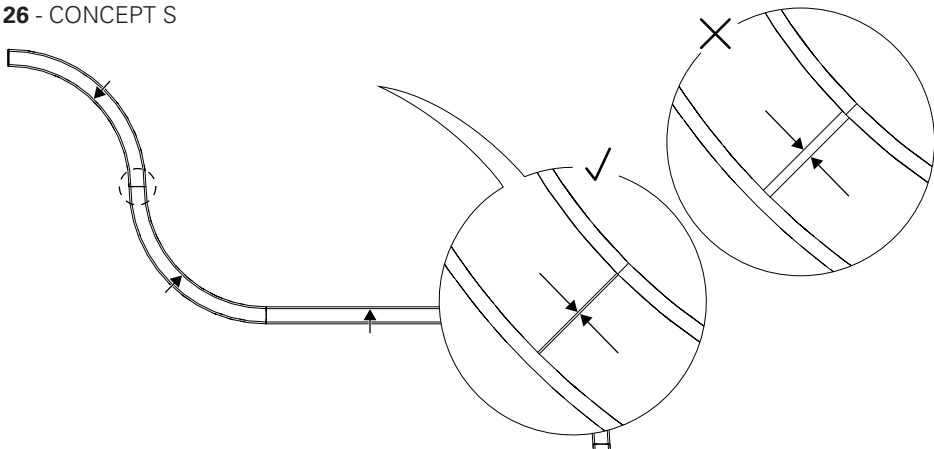


## 25 - CONCEPT S

CEILING ROSE - RECESSED  
PATÈRE DE SUSPENSION - ENCASTRÉ  
DECKENROSETTE - VERTIEFT  
CAIXA DE ALIMENTAÇÃO - ENCASTRAR  
BASE DE TETO - EMPOTRAR



## 26 - CONCEPT S



# INDELAGUE™

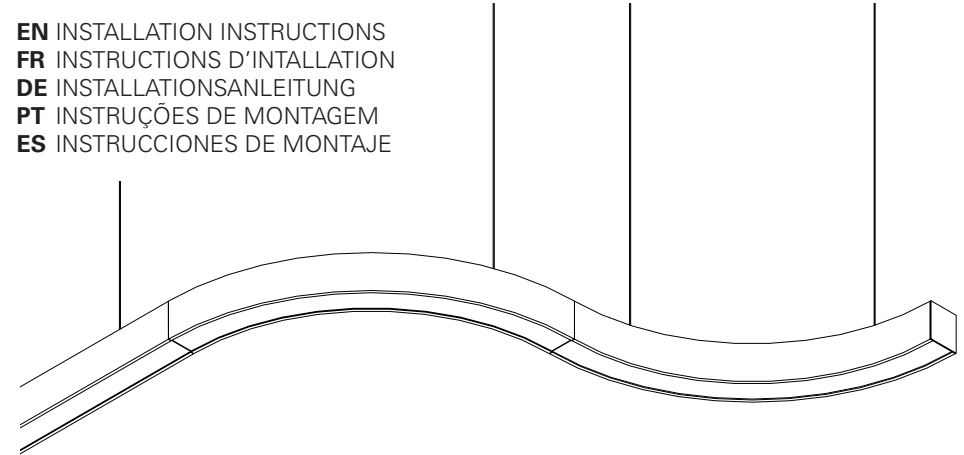
HIGH TECH | LIGHTING SOLUTIONS



MADE IN  
PORTUGAL

## CONCEPT S (SUSPENDE | SUSPENDU | PENDELVERSION | SUSPensa | SUSPENDIDO)

EN INSTALLATION INSTRUCTIONS  
FR INSTRUCTIONS D'INSTALLATION  
DE INSTALLATIONSANLEITUNG  
PT INSTRUÇÕES DE MONTAGEM  
ES INSTRUCCIONES DE MONTAJE



## CONCEPT S



**EN** WARNING: THE LIGHT SOURCE CONTAINED IN THE LUMINAIRE SHOULD BE REPLACED ONLY BY THE MANUFACTURER. DO NOT USE THIS EQUIPMENT IN AREAS CONTAINING CHEMICAL AGENTS: ACIDS, SOLVENTS, PAINTS, SILICONES, COATINGS, ETC.

**FR** AVERTISSEMENT: LA SOURCE DE LUMIÈRE CONTENUE DANS LA LUMINAIRE DOIT ÊTRE REMPLACÉE PAR LE FABRICANT. NE PAS UTILISER L'EQUIPEMENT DANS LES ZONES QUI CONTIENNENT DES AGENTS CHIMIQUES: ACIDES, SOLVANTS, PEINTURES, SILICONES, VERNIS, ETC.

**DE** WARNUNG: DIE IN DER LEUCHTE ENTHALTEN LICHTQUELLE SOLLTE NUR VOM HERSTELLER ERSETZT WERDEN. VERWENDEN SIE DIESES GERÄT NICHT IN BEREICHEN MIT CHEMISCHEN MITTELN: SÄUREN, LÖSUNGSMITTEL, FARBEN, SILIKONE, BESCHICHTUNGEN ETC.

**PT** ATENÇÃO: A FONTE DE LUZ CONTIDA NA LUMINÁRIA DEVE SER SUBSTITUÍDA UNICAMENTE PELO FABRICANTE. QUALQUER ANOMALIA DETECTADA CONTACTAR O FABRICANTE. NÃO UTILIZAR O EQUIPAMENTO EM ZONAS QUE CONTENHAM AGENTES QUÍMICOS: ÁCIDOS, SOLVENTES, TINTAS, SILICONES, VERNIZES, ETC.

**ES** ATENCIÓN: LA FUENTE DE LUZ CONTENIDA EN LA LUMINARIA DEBE SER SUSTITUIDA UNICAMENTE POR EL FABRICANTE. CUALQUIER ANOMALÍA DETECTADA CONTACTAR CON EL FABRICANTE. NO UTILIZAR

LA LUMINARIA EN ZONAS QUE CONTENGAN AGENTES QUÍMICOS: ÁCIDOS, DISOLVENTES, PINTURAS, SILICONAS, BARNICES, ETC."



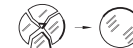
**EN** CAUTION, RISK OF ELECTRIC SHOCK.

**FR** ATTENTION, RISQUE DE CHOC ÉLECTRIQUE.

**DE** ACHTUNG, GEFAHR EINES STROMSCHLAGS.

**PT** CUIDADO, RISCO DE CHOCQUE ELÉTRICO.

**ES** PRECAUCIÓN, RIESGO DE DESCARGA ELÉCTRICA.



**EN** IF GLASS OR DIFFUSER BREAK OR CRACK, PLEASE REPLACE IT.

**FR** EN CAS DE CASSE OU FISSUREMENT, REMPLACEZ LE VERRE OU DIFFUSEUR.

**DE** BEI BRUCH ODER RISS, GLAS ODER DIFFUSER ERSETZEN.

**PT** EM CASO DE QUEBRA OU FISSURA, SUBSTITUIR O VIDRO OU DIFUSOR.

**ES** EN CASO DE ROTURA O FISURA, SUSTITUIR EL VIDRIO O DIFUSOR.



**EN** Read carefully the general terms and conditions of use and environmental concern with recycling attached. | **FR** Lire attentivement les conditions générales d'utilisations et de préoccupation environnementales avec les recyclage ci-joint. | **DE** Bitte lesen Sie die Allgemeinen Geschäftsbedingungen und Umweltbewusstsein über Recycling angeschlossen. | **PT** Ler atentamente as condições gerais de uso e preocupação ambiental com a reciclagem, em anexo. | **ES** Lea atentamente las condiciones generales de uso y preocupación ambiental con el reciclaje adjuntos.

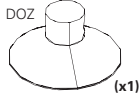
**EN** We reserve the right to make changes on technical specifications, design and installation leaflet without prior notice. | **FR** Sous réserve de modifications au niveau de la conception, des spécifications techniques et de la notice. | **DE** Änderungen von Entwurf, technischen Daten und Bedienungsanleitungen bleiben vorbehalten. | **PT** O fabricante reserva-se no direito de realizar modificações no desenho, especificações técnicas e folheto, sem aviso prévio. | **ES** El fabricante se reserva el derecho de realizar modificaciones en el diseño, las especificaciones técnicas y el folleto.

# CONCEPT S



EN SURFACE MOUNTED VERSION  
FR VERSION SAILLIE  
DE AUFBAUVERSION  
PT VERSÃO SALIENTE  
ES VERSIÓN DE SUPERFICIE

EN Accessories  
FR Accessoires  
DE Zubehör  
PT Acessórios  
ES Accesorios



(x1)

1/8 (45°)  
Ax BxC (mm) Kg  
Ø2050x65x85 1,8  
Ø2450x65x85 2,0

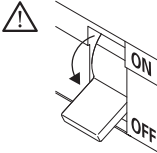
1/4 (90°)  
Ax BxC (mm) Kg  
Ø1650x65x85 2,7  
Ø1850x65x85 3,0

1/2 (180°)  
Ax BxC (mm) Kg  
Ø1650x65x85 5,3  
Ø1850x65x85 6,0

1/4 (90°)  
Ax BxC (mm) Kg  
Ø1050x65x85 1,8  
Ø1250x65x85 2,0  
Ø1450x65x85 2,4

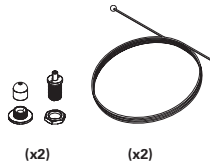
1/2 (180°)  
Ax BxC (mm) Kg  
Ø1050x65x85 3,4  
Ø1250x65x85 4,0  
Ø1450x65x85 4,6

Ax BxC (mm) Kg  
790x65x85 1,9  
1106x65x85 2,5  
1422x65x85 3,2  
1738x65x85 3,8  
2054x65x85 4,4



EN ACCESSORIES OPTION  
FR OPTION ACCESSOIRES  
DE OPTION ZUBEHÖR  
PT OPÇÃO ACESSÓRIOS  
ES OPCIÓN ACCESORIOS

SUSPENSION OPTION  
OPTION PATÈRE DE SUSPENSION  
OPTIONEN AUFHÄNGUNG  
OPÇÃO SUSPENSÃO  
OPCIÓN SUSPENSION

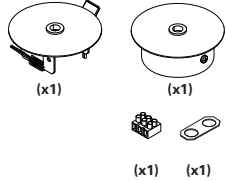


(x2)

(x2)

CEILING ROSE OPTION  
OPTION PATÈRE DE SUSPENSION  
OPTIONEN DECKENBALDACHIN  
OPÇÃO CAIXA DE ALIMENTAÇÃO  
OPCIÓN BASE DE TECHO

Recessed or surface mounted  
Encastré ou en saillie  
Vertieft oder hervorstehen  
Encastrar ou saliente  
Empotrar o superficie



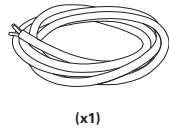
(x1)

(x1)

(x1)

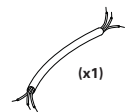
(x1)

CURRENT SUPPLY CABLE OPTION  
OPTION CÂBLE D'ALIMENTATION  
OPTIONEN EINSPEISUNGSKABEL  
OPÇÃO CABO DE ALIMENTAÇÃO  
OPCIÓN CABLE DE ALIMENTACIÓN



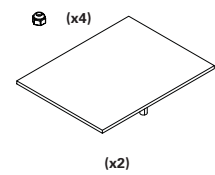
(x1)

THROUGH-WIRING OPTION  
OPTION CÂBLAGE TRAVERSANT  
OPTION DURCHGANGSVERDRÄHTUNG  
OPÇÃO CABLAGEM LINHA CONTÍNUA  
OPCIÓN CABLEADO LÍNEA CONTINUA



(x1)

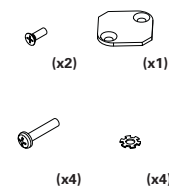
START KIT OPTION  
OPTION KIT DÉBUT DE LIGNE  
OPTION START KIT  
OPÇÃO START KIT  
OPCIÓN START KIT



(x4)

(x2)

BODY CONNECTOR KIT OPTION  
OPTION KIT UNION  
OPTION VERBINDUNGS KIT  
OPÇÃO KIT DE UNIÃO  
OPCIÓN KIT DE UNIÓN



(x2)

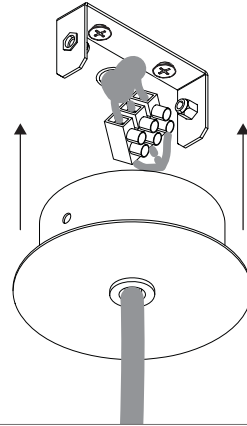
(x1)

(x4)

(x4)

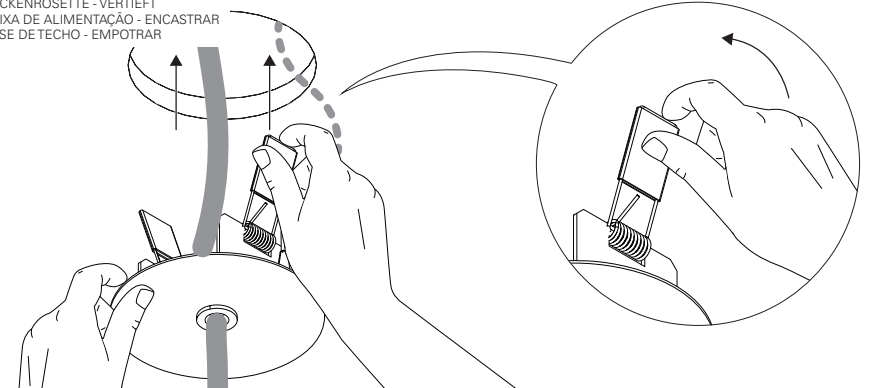
## 23 - CONCEPT S

CEILING ROSE - SURFACE MOUNTED  
PATÈRE DE SUSPENSION - SAILLIE  
DECKENROSETTE - AUFPUTZ  
CAIXA DE ALIMENTAÇÃO - SALIENTE  
BASE DE TECHO - SUPERFICIE



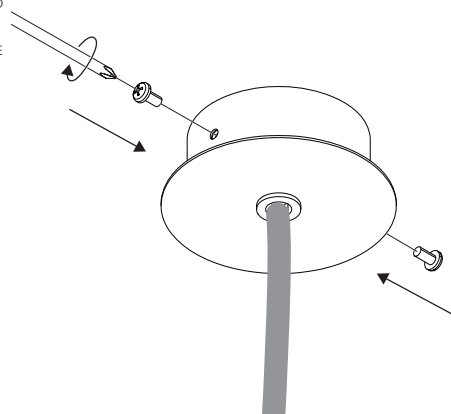
## 23 - CONCEPT S

CEILING ROSE - RECESSED  
PATÈRE DE SUSPENSION - ENCASTRÉ  
DECKENROSETTE - VERTIEFT  
CAIXA DE ALIMENTAÇÃO - ENCASTRAR  
BASE DE TECHO - EMPOTRAR



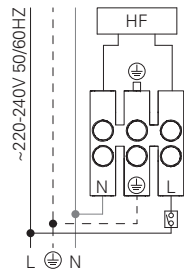
## 24 - CONCEPT S

CEILING ROSE - SURFACE MOUNTED  
PATÈRE DE SUSPENSION - SAILLIE  
DECKENROSETTE - AUFPUTZ  
CAIXA DE ALIMENTAÇÃO - SALIENTE  
BASE DE TECHO - SUPERFICIE



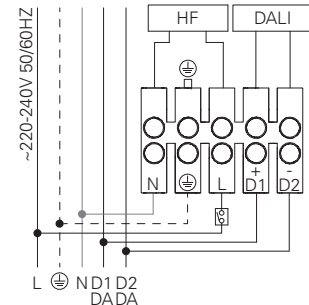
## 21 - CONCEPT S HF

STANDARD POWER SUPPLY  
CÂBLAGE STANDARD  
STANDARD VERDRÄHTUNG  
ALIMENTAÇÃO ELÉCTRICA STANDARD  
ELECTRIFICACIÓN ESTÁNDAR



## DALI

DIMMABLE POWER SUPPLY  
CÂBLAGE AVEC GRADATION  
DIMMBARE VERDRÄHTUNG  
ALIMENTAÇÃO ELÉCTRICA COM REGULAÇÃO  
ELECTRIFICACIÓN CON REGULACIÓN



BLUE - N (NEUTRAL)  
GREEN AND YELLOW - (EARTH)  
BROWN - L (LIVE)  
GREY - D1+  
BLACK - D2-

BLEU - N (NEUTRE)  
VERT ET JAUNE - (TERRE)  
MARRON - L (PHASE)  
GRIS - D1+  
NOIR - D2-

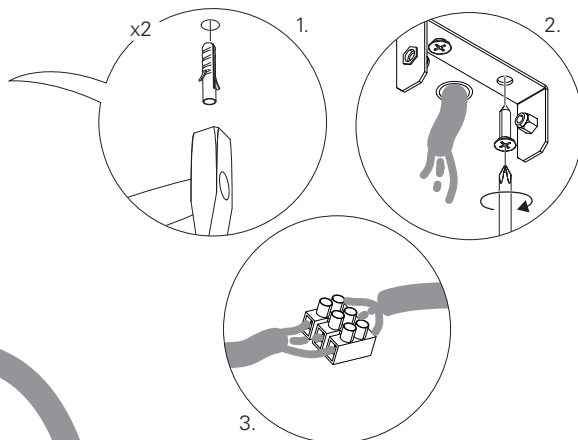
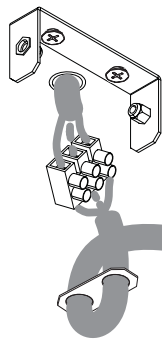
BLAU - N (NEUTRAL)  
GRÜN UND GELB - (ERDE)  
BRAUN - L (PHASE)  
GRAU - D1+  
SCHWARZ - D2-

AZUL - N (NEUTRO)  
VERDE E AMARELO - (TERRA)  
CASTANHO - L (FASE)  
CINZA - D1+  
PRETO - D2-

AZUL - N (NEUTRAL)  
VERDE Y AMARILLO - (TIERRA)  
MARRÓN - L (FASE)  
GRIS - D1+  
NEGRO - D2-

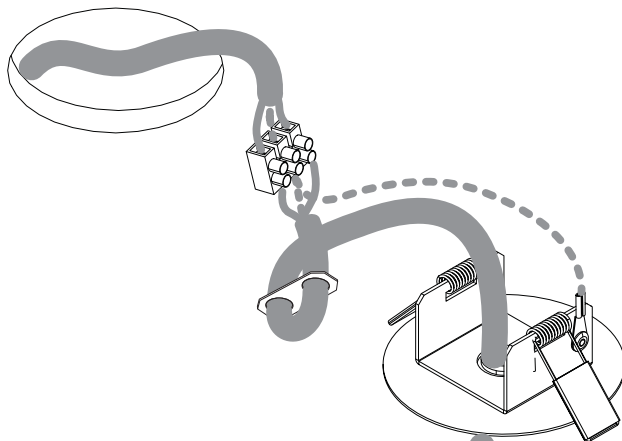
## 22 - CONCEPT S

CEILING ROSE - SURFACE MOUNTED  
PATÈRE DE SUSPENSION - SAILLIE  
DECKENROSETTE - AUFPUTZ  
CAIXA DE ALIMENTAÇÃO - SALIENTE  
BASE DE TECTO - SUPERFICIE



## 22 - CONCEPT S

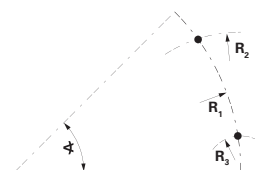
CEILING ROSE - RECESSED  
PATÈRE DE SUSPENSION - ENCASTRÉ  
DECKENROSETTE - VERTIEFT  
CAIXA DE ALIMENTAÇÃO - ENCASTRAR  
BASE DE TECTO - EMPOTRAR



## 1 - CONCEPT S

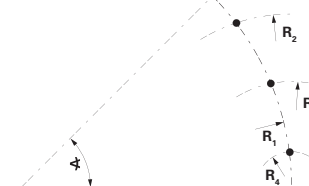
1/8 (45°)

AxBxC (mm)	φ (°)	R <sub>1</sub>	R <sub>2</sub>	R <sub>3</sub>	R <sub>4</sub> (mm)
Ø2050x65x85	45	1985	613	156	



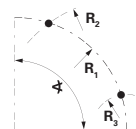
1/8 (45°)

AxBxC (mm)	φ (°)	R <sub>1</sub>	R <sub>2</sub>	R <sub>3</sub>	R <sub>4</sub> (mm)
Ø2450x65x85	45	2385	764	465	156



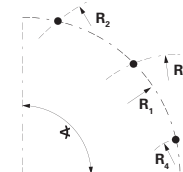
1/4 (90°)

AxBxC (mm)	φ (°)	R <sub>1</sub>	R <sub>2</sub>	R <sub>3</sub>	R <sub>4</sub> (mm)
Ø1050x65x85	90	985	579	154	



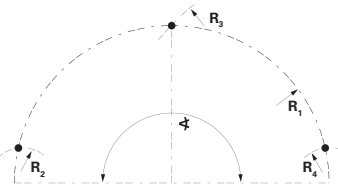
1/4 (90°)

AxBxC (mm)	φ (°)	R <sub>1</sub>	R <sub>2</sub>	R <sub>3</sub>	R <sub>4</sub> (mm)
Ø1250x65x85	90	1185	721	453	155
Ø1450x65x85	90	1385	863	530	155
Ø1650x65x85	90	1585	1006	607	155
Ø1850x65x85	90	1785	1175	683	156

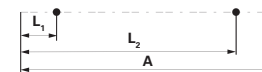


1/2 (180°)

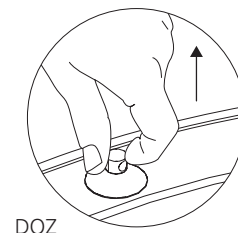
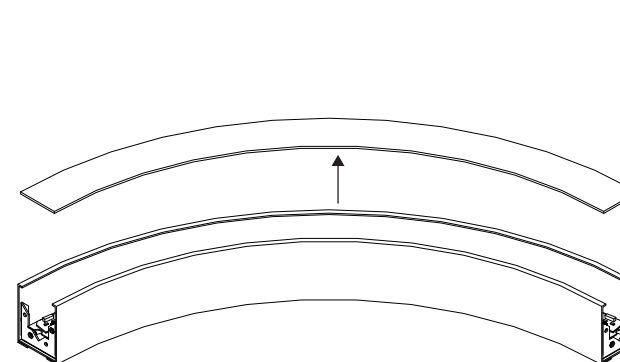
AxBxC (mm)	φ (°)	R <sub>1</sub>	R <sub>2</sub>	R <sub>3</sub>	R <sub>4</sub> (mm)
Ø1050x65x85	180	985	154	697	154
Ø1250x65x85	180	1185	155	838	155
Ø1450x65x85	180	1385	155	979	155
Ø1650x65x85	180	1585	155	1121	155
Ø1850x65x85	180	1785	156	1262	156



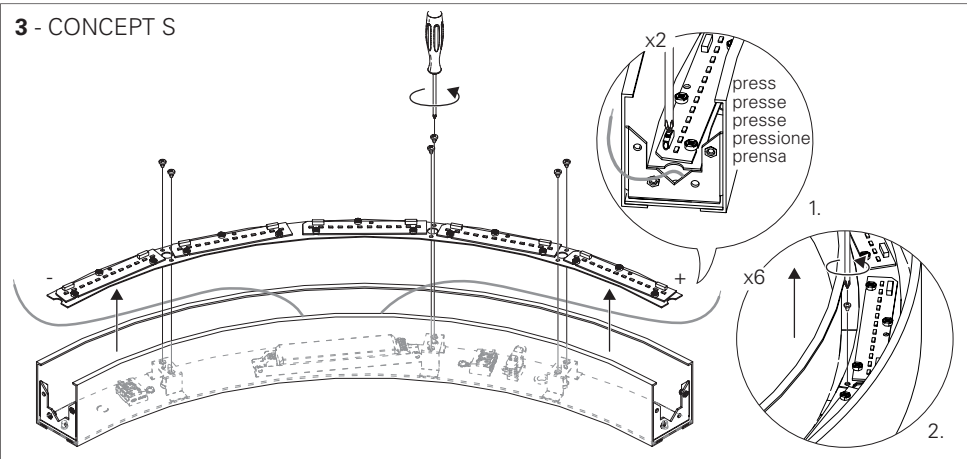
AxBxC (mm)	L <sub>1</sub>	L <sub>2</sub>
790x65x85	158	632
1106x65x85	158	948
1422x65x85	158	1264
1738x65x85	158	1580
2054x65x85	158	1896



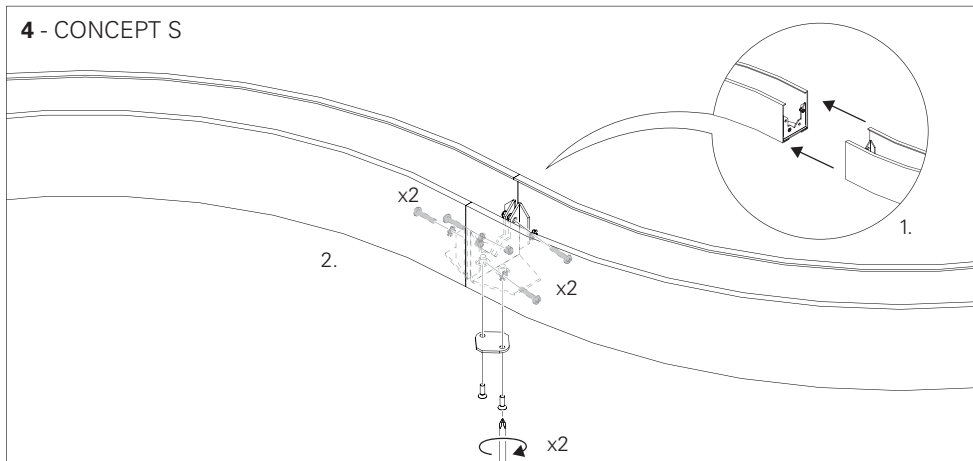
## 2 - CONCEPT S



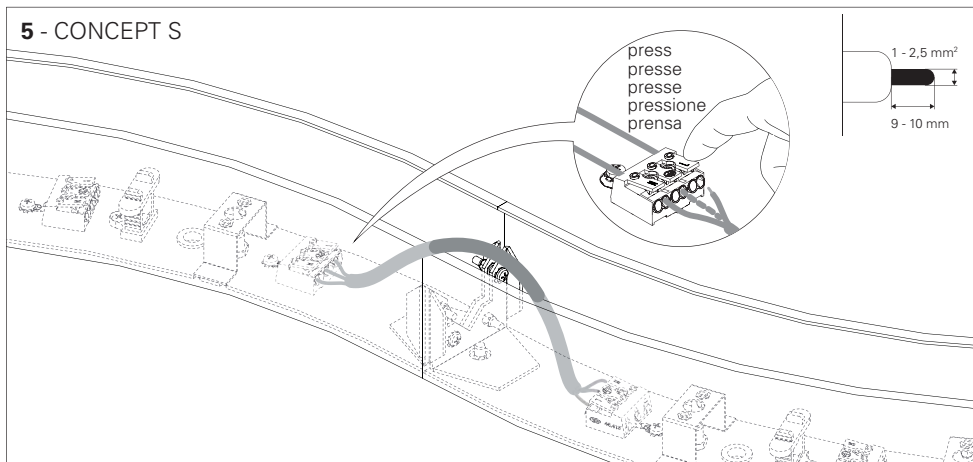
### 3 - CONCEPT S



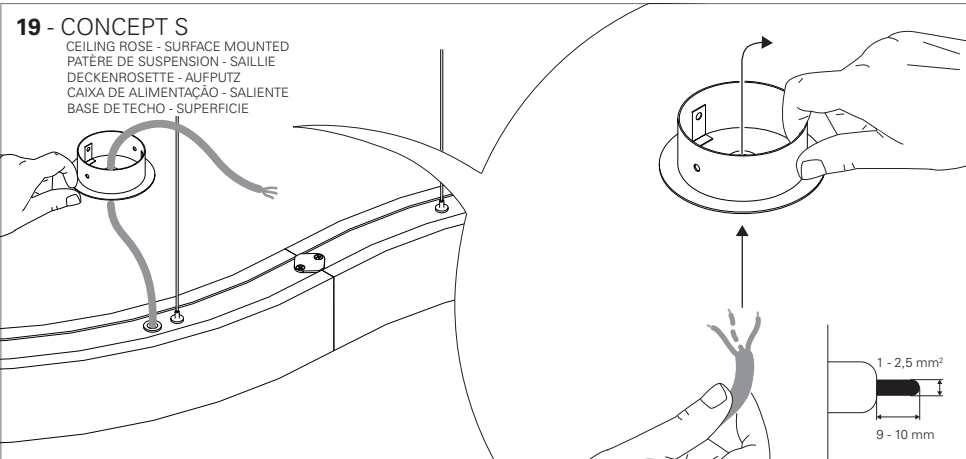
### 4 - CONCEPT S



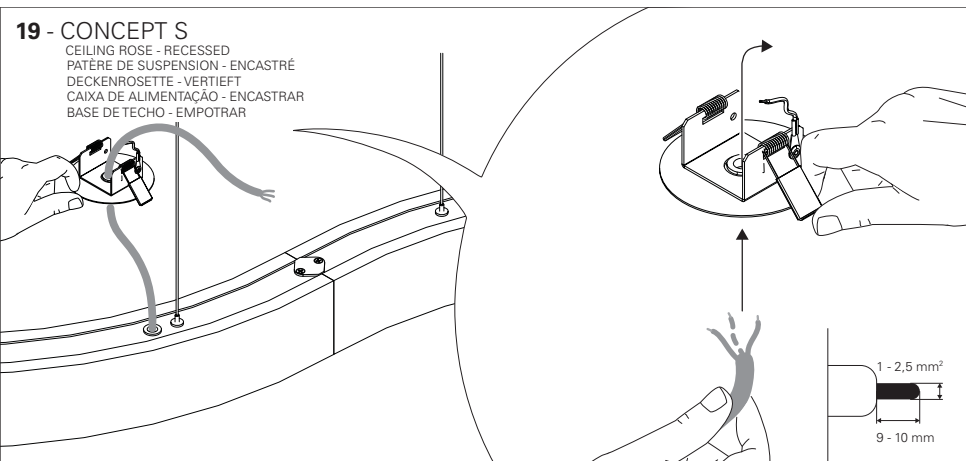
### 5 - CONCEPT S



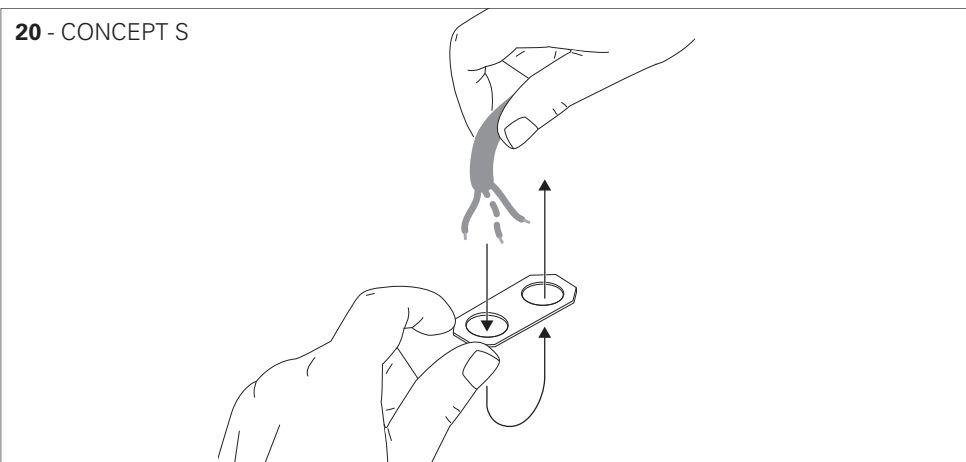
### 19 - CONCEPT S



### 19 - CONCEPT S



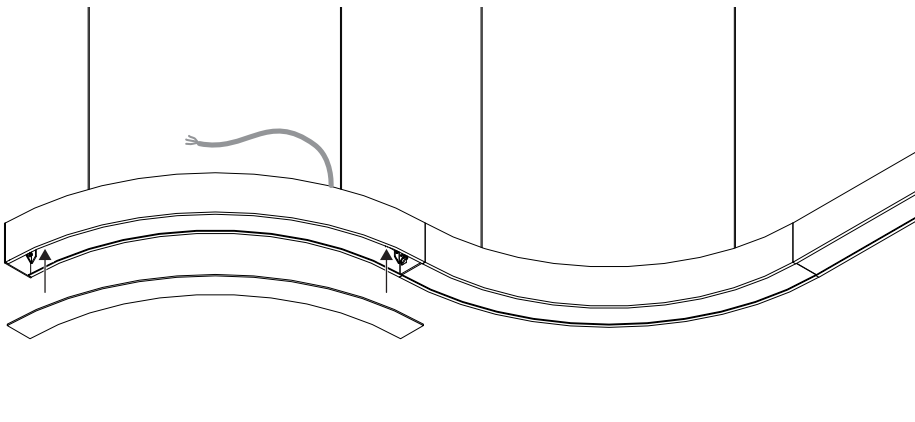
### 20 - CONCEPT S



## 15 - CONCEPT S

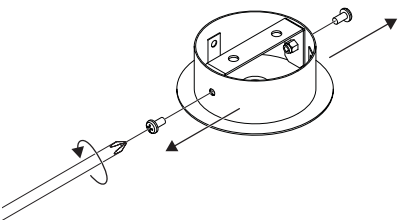


## 16 - CONCEPT S



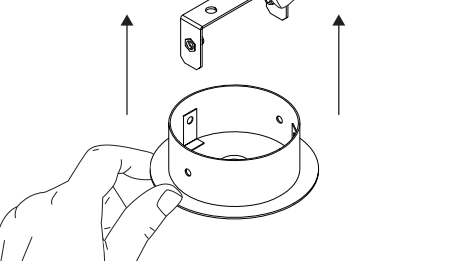
## 17 - CONCEPT S

CEILING ROSE - SURFACE MOUNTED  
PATÈRE DE SUSPENSION - SAILLIE  
DECKENROSETTE - AUFPUTZ  
CAIXA DE ALIMENTAÇÃO - SALIENTE  
BASE DE TECHO - SUPERFICIE



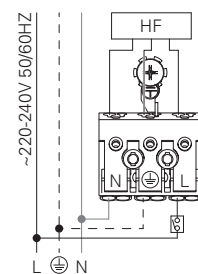
## 18 - CONCEPT S

CEILING ROSE - SURFACE MOUNTED  
PATÈRE DE SUSPENSION - SAILLIE  
DECKENROSETTE - AUFPUTZ  
CAIXA DE ALIMENTAÇÃO - SALIENTE  
BASE DE TECHO - SUPERFICIE

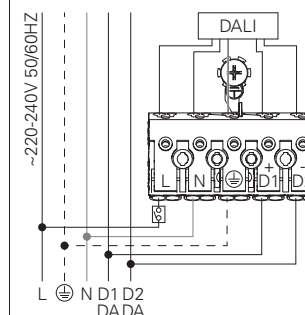


## 6 - CONCEPT S

STANDARD POWER SUPPLY  
CÂBLAGE STANDARD  
STANDARD VERDRÄHTUNG  
ALIMENTAÇÃO ELÉCTRICA STANDARD  
ELECTRIFICACIÓN ESTÁNDAR



DIMMABLE POWER SUPPLY  
CÂBLAGE AVEC GRADATION  
DIMMBARE VERDRÄHTUNG  
ALIMENTAÇÃO ELÉCTRICA COM REGULAÇÃO  
ELECTRIFICACIÓN CON REGULACIÓN



BLUE - N (NEUTRAL)  
BROWN - L (LIVE)  
GREY - D1+  
BLACK - D2-

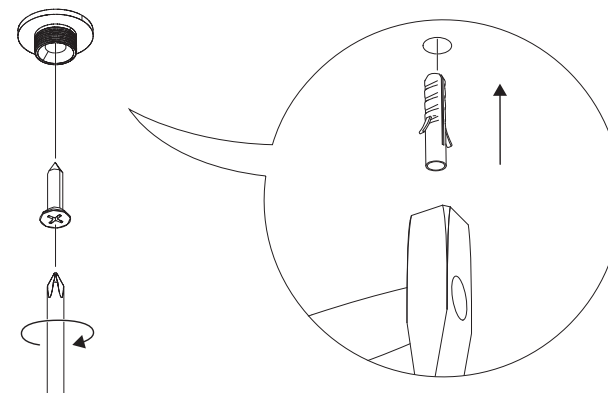
BLEU - N (NEUTRE)  
VERT ET JAUNE - (TERRE)  
MARRON - L (PHASE)  
GRIS - D1+  
NOIR - D2-

BLAU - N (NEUTRAL)  
GRÜNE UND GELBE - (EARTH)  
BRAUN - L (PHASE)  
GRAU - D1+  
SCHWARZ - D2-

AZUL - N (NEUTRO)  
VERDE E AMARELO - (TERRA)  
CASTANHO - L (FASE)  
CINZA - D1+  
PRETO - D2-

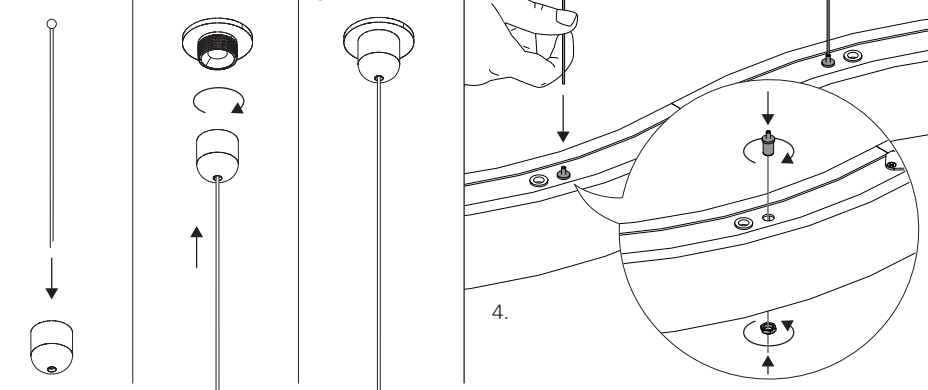
AZUL - N (NEUTRAL)  
VERDE Y AMARILLO - (TIERRA)  
MARRÓN - L (FASE)  
GRIS - D1+  
NEGRO - D2-

## 7 - CONCEPT S

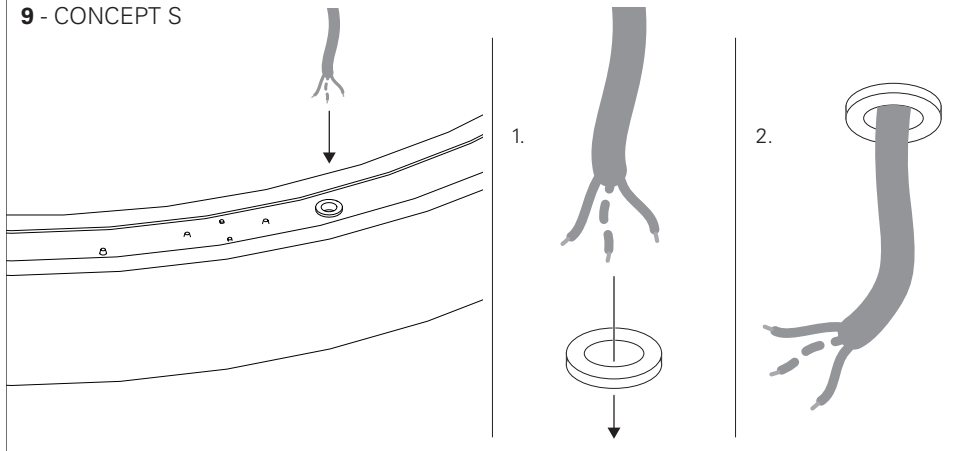


## 8 - CONCEPT S

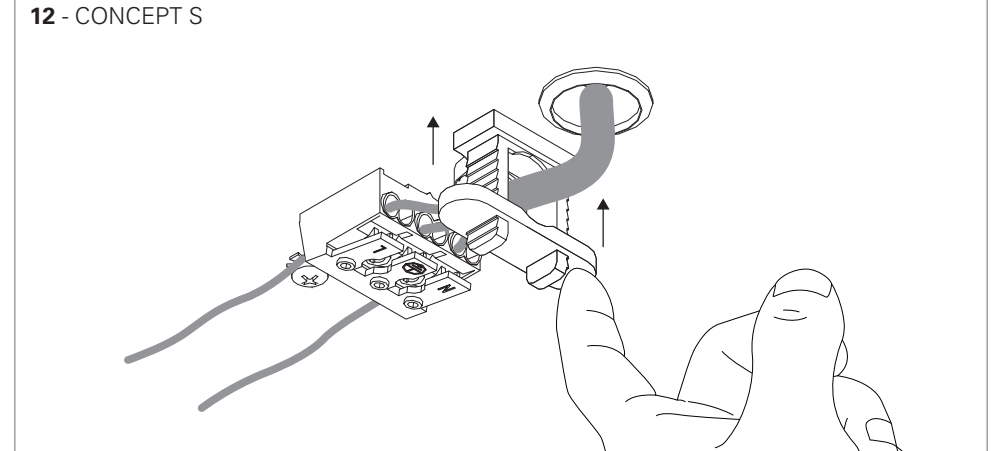
1. 2. 3.



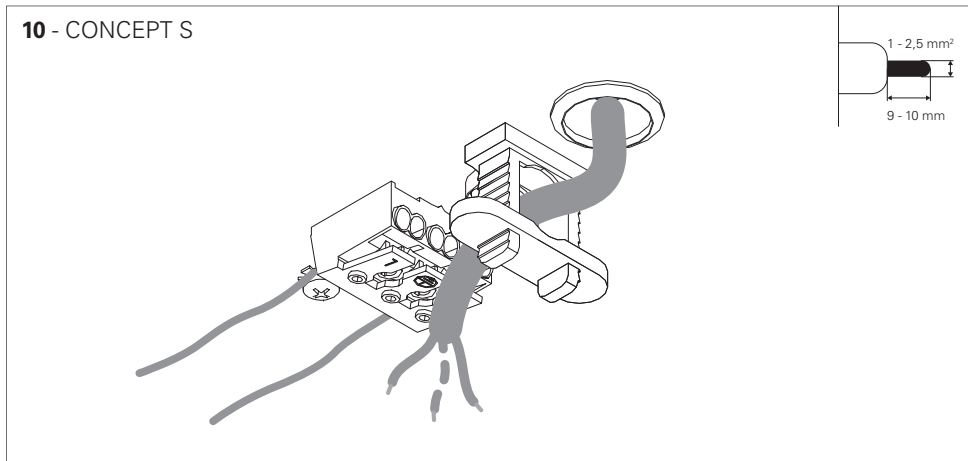
## 9 - CONCEPT S



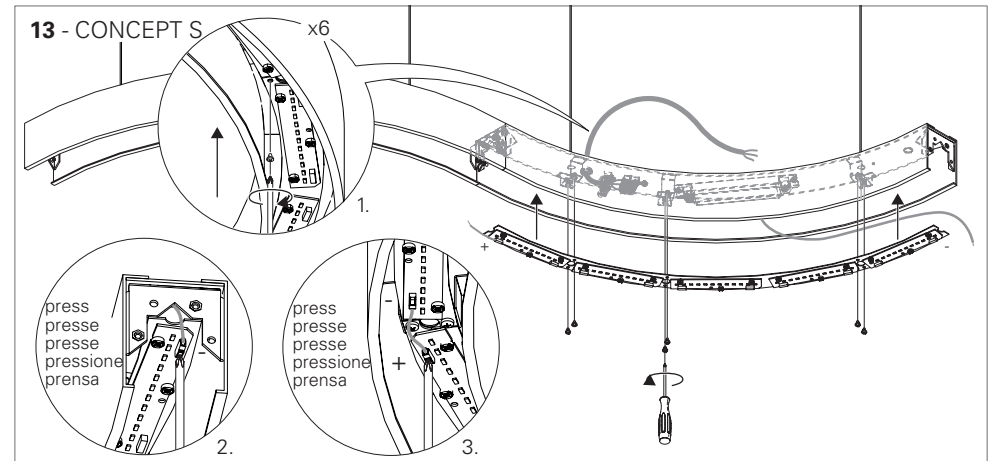
## 12 - CONCEPT S



## 10 - CONCEPT S

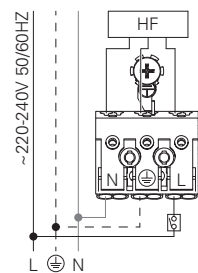


## 13 - CONCEPT S

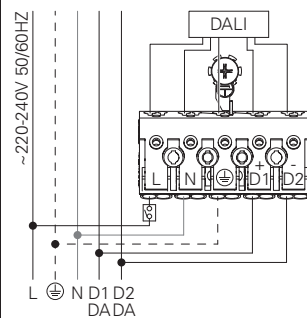


## 11 - CONCEPT S

STANDARD POWER SUPPLY  
CÂBLAGE AVEC GRADATION  
STANDARD VERDRAHTUNG  
ALIMENTAÇÃO ELÉCTRICA STANDARD  
ELECTRIFICACIÓN ESTÁNDAR



DIMMABLE POWER SUPPLY  
CÂBLAGE AVEC GRADATION  
DIMMBARE VERDRAHTUNG  
ALIMENTAÇÃO ELÉCTRICA COM REGULAÇÃO  
ELECTRIFICACIÓN CON REGULACIÓN



BLUE - N (NEUTRAL)  
GREEN AND YELLOW - (EARTH)  
BROWN - L (LIVE)  
GREY - D1+  
BLACK - D2-

BLEU - N (NEUTRE)  
VERT ET JAUNE - (TERRE)  
MARRON - L (PHASE)  
GRIS - D1+  
NOIR - D2-

BLAU - N (NEUTRAL)  
GRÜNE UND GELBE - (EARTH)  
BRAUN - L (PHASE)  
GRAU - D1+  
SCHWARZ - D2-

AZUL - N (NEUTRO)  
VERDE E AMARELO - (TERRA)  
CASTANHO - L (FASE)  
CINZA - D1+  
PRETO - D2-

AZUL - N (NEUTRAL)  
VERDE Y AMARILLO - (TIERRA)  
MARRÓN - L (FASE)  
GRIS - D1+  
NEGRO - D2-

## 14 - CONCEPT S

