



LED



Norms: EN 60598-1, EN 60598-2-2



### PRODUCT DESCRIPTION

**Areas of Application:** Commercial and Business areas, Public buildings, Housing, Offices, Hotel and Restaurant services, Art and Culture spaces.

**Mounting:** Ceiling recessed.

**Light Distribution:** Direct.

**Light Source:** LED 4000K, CRI>80, 50.000h life.

**Control Gear:** LED driver, 220-240VAC-50/60Hz.

**Materials:** Body: Steel sheet.

**Surface Finish:** Powder coated.

PM - Satin aluminium reflector | 70 Beam angle

LED	UGR	W	Lm	mA	V	Lm/W	η(%)	AxBxC (mm)	β	Kg	HF	DSI	DALI
	≤22	12	1500	350	33	96	93	135x135x145	122x117	1,11	90020.L112.E	90020.L112.G	90020.L112.H
	≤22	25	2500	700	35	85	97	135x135x145	122x117	1,11	90020.L125.E	90020.L125.G	90020.L125.H
	≤22	35	3300	900	36	84	92	135x135x145	122x117	1,11	90020.L135.E	90020.L135.G	90020.L135.H

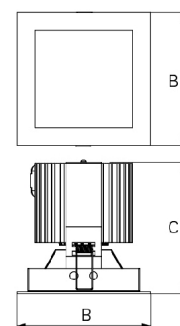
### COLOUR / FINISH

Code	Description
W	White (RAL 9016)
B	Black (RAL 9005)
G	Grey (RAL 9006)

### OPTIONS

Code	Description
3000	Colour temperature 3000K.
302	Transparent glass.
303	Opal glass.
304	DAM - Microprismatic diffuser.
--	Emergency unit 3 hours.

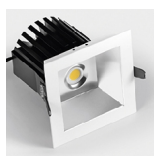
### DIMENSIONS



### DETAILS



Passive cooling



Downlight detail



Driver detail

\* Led included.

Example code for order: 90020.L112.H (DALI) + W (COLOUR/FINISH) + 3000 + 302 (OPTIONS)

We reserve the right to make technical changes without prior notice. Electrical/Optical data are subjected to a tolerance of +/-10%.

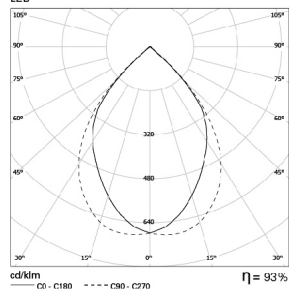
ROXO LIGHTING LIMITED

24 BEDFORD ROW | LONDON | WC1R 4TQ

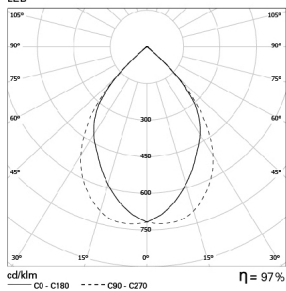
roxo.london@roxolighting.com | www.roxolighting.com

#### PHOTOMETRY

**DKN LED 12W PM  
LED**



**DKN LED 25W PM  
LED**



#### TO SPECIFY:

Recessed LED square downlight with steel sheet bezel, aluminium reflector and integral 1500/2500/3300 lumen light engine. Optional IP54 version with transparent or opal 4mm tempered glass or microprismatic diffuser and 3000K. For ceiling thicknesses of 1-20mm – as Roxo Lighting DKN LED.

We reserve the right to make technical changes without prior notice. Electrical/Optical data are subjected to a tolerance of +/-10%.