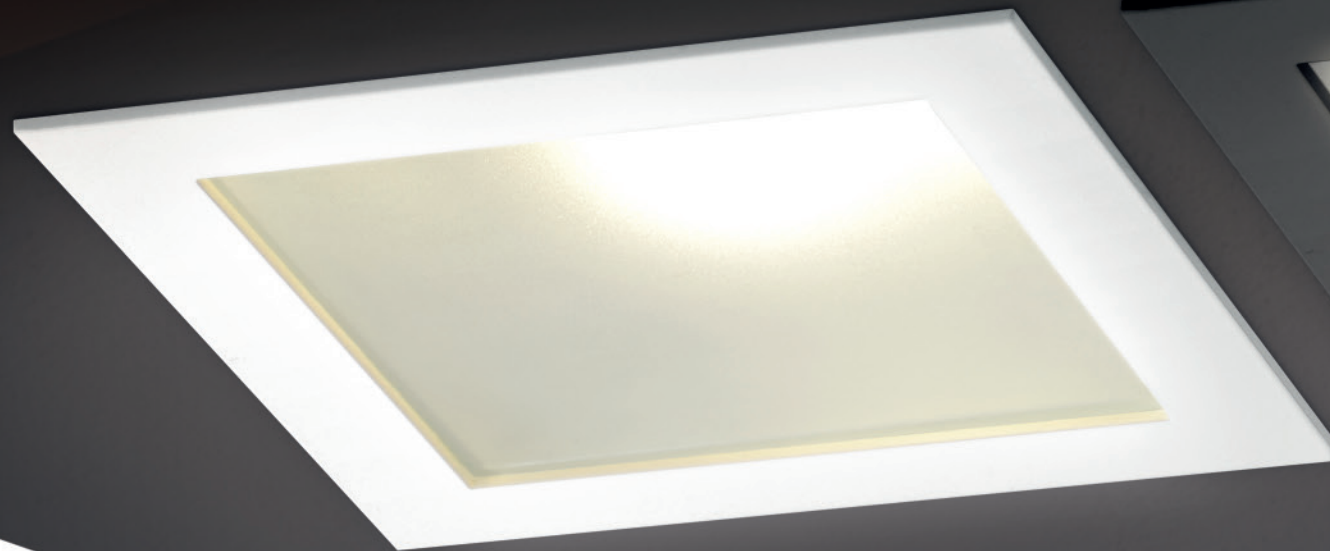


MADE IN
PORTUGAL
by INDELAGUE GROUP

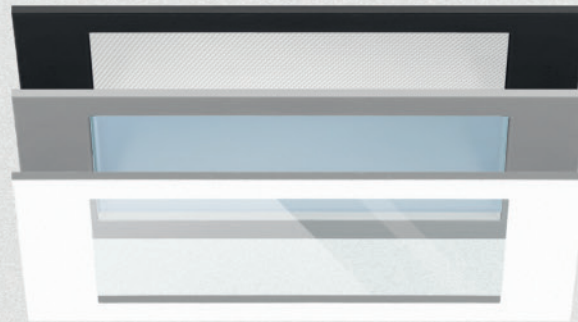
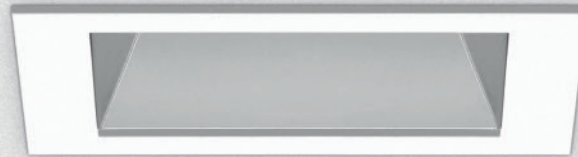
EN



DKN range

INDELAGUE GROUP

INDELAGUE[™] | ROXO lighting
HIGH TECH | LIGHTING SOLUTIONS



DKN LED

DKN range

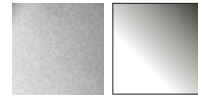
DKN is a recessed square downlighter, created for contemporary spaces. This downlight allows the creation of timeless but also productive spaces.

Different types of light sources, finishes and optical options make DKN a perfect solution for all types of locations.

If you are looking for increased efficiency, quality, cost-effectiveness or environmental friendly, you will find the answer in our DKN LED.

Areas of Application: Public areas, entrance halls, corridors, shopping centres, receptions, hotels, boutiques, shops, showrooms, offices.

Optic System Options



PMB - Satin aluminium PBB - Polished aluminium

Color Options

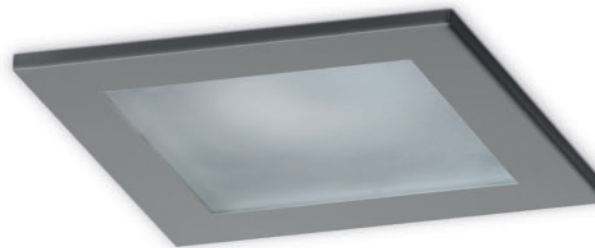
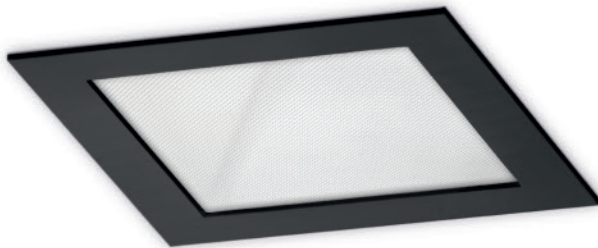


White Grey Black

Tempered Glass/Diffuser Options



Transparent Opal DAM - Microprismatic diffuser



DKN LED

Recessed LED square downlighter

- LED luminaire luminous flux up to 1500/2500/3300 Lm.
- 12/25/35W available.
- LED up to 96 Lm/W.
- Life 50000 Hours.
- Colour temperature 4000/3000K.
- CRI >80.
- Satin aluminium reflector.
- Optional:**
- Dimmable versions (DSI/DALI).
- 4mm transparent/opal tempered glass.
- Microprismatic diffuser.
- 3 hours emergency.



DKN /G

Recessed IP20/54 single compact fluorescent downlighter

- TC-TEL lamp version.
- 1x13/1x18W available.
- Up to 59% LOR.
- Polished aluminium reflector.
- 3mm transparent tempered glass included.
- Optional:**
- Dimmable versions (DSI/DALI).
- Opal tempered glass.
- 3 hours emergency.



DKN

Recessed square single compact fluorescent downlighter

- TC-TEL lamp version.
- 1x13/1x18W available.
- Up to 67% LOR.
- Optional:**
- Dimmable versions (DSI/DALI).
- Polished or satin aluminium reflector.
- 3 hours emergency.

INDELAGUE GROUP

INDELAGUE[™]
HIGH TECH | LIGHTING SOLUTIONS

ROXO lighting

HEADQUARTERS

INDÚSTRIA ELÉTRICA DE ÁGUEDA S.A.
Rua da Mina 465 | Covão
Zona industrial EN1 Norte
Apartado 106 / 3754-909
3750-792 Trofa
ÁGUEDA | PORTUGAL
GPS. 40° 36' 00.54" N | 8° 27' 11.76" W
T. +351 234 612 310 | F. +351 234 624 058
WWW.INDELAGUE.COM

UNITED KINGDOM

ROXO LIGHTING LIMITED
24 BEDFORD ROW
LONDON | WC1R 4TQ
roxo.london@roxolighting.com
WWW.ROXOLIGHTING.COM

SPAIN

INDELAGUE ESPAÑA, S.L.
Avenida del Ejército, nº 8 - 1º C
C.P. 15006 | A CORUÑA | ESPAÑA
comercial@indelague.com
WWW.INDELAGUE.COM



The company reserves the right to change specification without prior notification or public announcement.