



LED



Norms: EN 60598-1, EN 60598-2-2



**PRODUCT DESCRIPTION**

**Areas of Application:** Commercial and Business areas, Public buildings, Housing, Offices, Hotel and Restaurant services, Art and Culture spaces.

**Mounting:** Ceiling recessed.

**Light Distribution:** Direct.

**Light Source:** LED 4000K, CRI>80, 50.000h life (@L80, B10, Ta 25 C).

**Control Gear:** LED driver, 220-240VAC-50/60Hz.

**Materials:** Body: Steel sheet.

**Surface Finish:** Powder coated.

PM - Satin aluminium reflector | 70 Beam angle

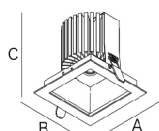
	LAMP	UGR	W	Lm	mA	V	Lm/W	η(%)	AxBxC (mm)	⚡	Kg	HF	DALI
	LED	≤19	12	1585	280	33	111	84	135x135x145	122x117	1,25	90020.L112.E	90020.L112.H
		≤22	19	2618	470	34	114	83	135x135x145	122x117	1,16	90020.L125.E	90020.L125.H
		≤22	26	3454	640	34	114	86	135x135x145	122x117	1,20	90020.L135.E	90020.L135.H

**COLOUR / FINISH**

Code	Description
W	White
G	Grey
B	Black

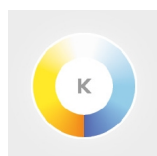
• Other colours under request.

**DIMENSIONS**



**OPTIONS**

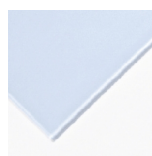
**Colour temperature**



3000K  
Specific colour application (food)

Order code  
**3000**  
under request

**Glass / Diffuser**



Transparent glass  
Opal glass  
DAM - Microprismatic diffuser

Order code  
**302**  
**303**  
**304**

Example code for order: 90020.L112.H (DALI) + W (COLOUR/FINISH) + 3000 + 302 + 955000 (OPTIONS)

We reserve the right to make technical changes without prior notice. Electrical/Optical data are subjected to a tolerance of +/-10%.

Safety cable

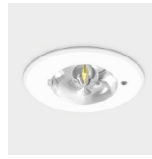
Order code  
**955000**

Emergency unit

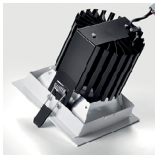
Option supplied under request.



Steel safety cable



DETAILS



Passive cooling

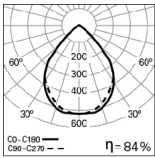


Downlight detail

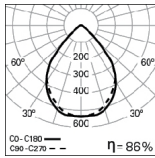


Connectors

PHOTOMETRY



**DKN LED 12W**  
**PM 4000K 70°**



**DKN LED 26W**  
**PM 4000K 70°**

**TO SPECIFY:**

Square LED recessed downlight. High performance aluminum reflector. Standard total luminous flux of 1585, 2618 or 3454lm, 4000K, CRI>80 and 50000h lifetime (@L80, B10, Ta 25 C) and passive cooling of the LED through improved heat sink. Optional DALI dimmable driver, IP20/54 through 4mm opal or transparent tempered glass or microprismatic diffuser. Also available as 3000K. For ceiling thicknesses of 1 to 20mm. - as Indelague DKN LED

We reserve the right to make technical changes without prior notice.  
Electrical/Optical data are subjected to a tolerance of +/-10%.