



LED



Norms: EN 60598-1, EN 60598-2-2



PRODUCT DESCRIPTION

Areas of Application: Commercial and Business areas, Public buildings, Housing, Offices, Hotel and Restaurant services, Art and Culture spaces.

Mounting: Ceiling recessed.

Light Distribution: Direct.

Light Source: LED 4000K, CRI>80, 60.000h life (@L70, B10, Ta 25 C).

Control Gear: LED driver, 220-240VAC-50/60Hz.

Materials: Body: Die-cast aluminium.

Surface Finish: Powder coated.

EFFICIENT - High LOR reflector | Satin aluminium reflector | 80 Beam angle

LED	UGR	W	Lm	mA	V	Lm/W	η(%)	AxB (mm)	Φ	K1	K3	kg	HF	DALI
LED	≤16	8	1150	240	33	113	98	Ø236x130	Ø220	•	•	2,0	90014.L108.E	90014.L108.H
	≤19	18	2091	440	34	115	99	Ø236x130	Ø220	•	•	2,0	90014.L115.E	90014.L115.H
	≤22	28	3070	670	35	109	99	Ø236x130	Ø220	•	•	2,0	90014.L125.E	90014.L125.H

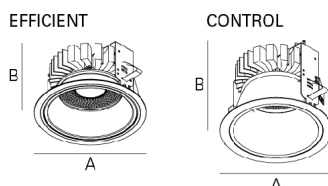
CONTROL - Glare control | Satin aluminium reflector | 80 Beam angle

LED	UGR	W	Lm	mA	V	Lm/W	η(%)	AxB (mm)	Φ	K1	K3	kg	HF	DALI
LED	≤16	8	1150	240	33	107	93	Ø236x178	Ø220	•	•	2,0	90123.L108.E	90123.L108.H
	≤19	18	2091	440	34	110	95	Ø236x178	Ø220	•	•	2,0	90123.L115.E	90123.L115.H
	≤19	28	3070	670	35	104	95	Ø236x178	Ø220	•	•	2,0	90123.L125.E	90123.L125.H

COLOUR / FINISH

Code	Description
W	White
G	Grey
B	Black
• Other colours under request.	

DIMENSIONS

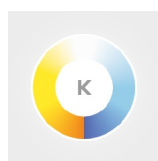


Example code for order: 90014.L125.H (DALI) + W (COLOUR/FINISH) + 3000 + 955000 + K3 (OPTIONS)

We reserve the right to make technical changes without prior notice. Electrical/Optical data are subjected to a tolerance of +/-10%.

OPTIONS

Colour temperature



3000K

Order code
3000

Safety cable



Steel safety cable

Order code
955000

Emergency unit

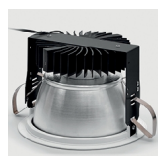


Emergency unit 3 hours
Emergency unit 1 hour

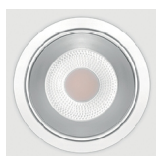
Order code
K3
K1

- Test function by telecommand signal.

DETAILS



Passive cooling

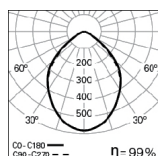


Front view

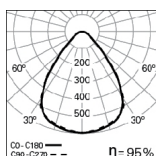


Connectors

PHOTOMETRY



DYNA LED 18W
EFFICIENT 4000K 80°



DYNA LED 18W
CONTROL 4000K 80°

TO SPECIFY:

Circular LED recessed downlight. Die cast aluminium trim and EFFICIENT or CONTROL high performance aluminum reflectors (UGR<19). Standard total luminous flux of 1150, 2091 or 3070lm, 4000K, CRI>80 and 60000h lifetime (@ L70, B10, Ta 25 C) and passive cooling of the LED through improved heat sink. Optional DALI dimmable driver, 3000K and 1 or 3 hours emergency unit. For ceiling thicknesses of 1 to 25mm. - as Indelague DYNA LED

We reserve the right to make technical changes without prior notice.
Electrical/Optical data are subjected to a tolerance of +/-10%.