



LED



Norms: EN 60598-1, EN 60598-2-1

CE IP65 IK07 650°C 230V/50Hz

PRODUCT DESCRIPTION

Areas of Application: Storehouses, Industrial areas, Corridors, Garages, Basements.

Mounting: Surface/Wall Mounted.

Light Distribution: Direct.

Light Source: LED 4000K, CRI >80, 50.000h life.


Control Gear: LED driver, 220-240VAC-50/60Hz.

Materials: Body: Polyester reinforced with fiberglass, manufactured by compression and polyurethane gasket.

Surface Finish: Gear tray powder coated in white.

Fixing system: Equipped with stainless steel fixing brackets and clips.

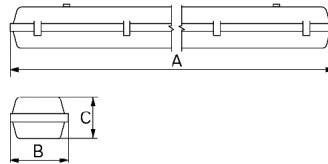
DC0 - Polycarbonate diffuser

LED	W	Lm	AxBxC (mm)	HF	DALI
	2x22	6000	1275x170x108	904Q.222.12.F4	904Q.222.12.E4
	2x27	7500	1575x170x108	904Q.227.12.F4	904Q.227.12.E4

OPTIONS

Code	Description
3000	Colour temperature 3000K.

DIMENSIONS



DETAILS



LED detail



Stainless steel clips

TO SPECIFY:

Waterproof LED luminaire with IP65 and body in polyester reinforced with fiberglass, manufactured by compression and polyurethane gasket. Polycarbonate diffuser with stainless steel clips and fixing brackets. Integral LED driver and total luminous flux of 6000/7500lumen. Optional dimmable versions - as Roxo Lighting ECG. □ LED.

Example code for order: 904Q.222.12.E4 (DALI) + 3000 (OPTIONS)

We reserve the right to make technical changes without prior notice. Electrical/Optical data are subjected to a tolerance of +/-10%.