

Norms: EN 60598-1, EN 60598-2-2



PRODUCT DESCRIPTION

Areas of Application: Sports hall.

Mounting: Ceiling recessed.

Light Distribution: Direct.

Control Gear: Electronic equipment, 220-240VAC-50/60Hz.

Materials: Body: Steel sheet.

Surface Finish: Powder coated in white matt (RAL9016).



ELG - White powder coated "V" shape louvre with steel rods

LAMP*	W	AxBxC (mm)	f	HF	DSI	DALI
T5	3x35	1497x597x85	1480x580	9L51.335.46.A4	9L51.335.46.84	9L51.335.46.74
	3x49	1497x597x85	1480x580	9L51.349.46.A4	9L51.349.46.84	9L51.349.46.74
	3x80	1497x597x85	1480x580	9L51.380.46.A4	9L51.380.46.84	9L51.380.46.74
	4x28	1197x597x85	1180x580	9L51.428.46.A4	9L51.428.46.84	9L51.428.46.74
	4x35	1497x597x85	1480x580	9L51.435.46.A4	9L51.435.46.84	9L51.435.46.74
	4x49	1497x597x85	1480x580	9L51.449.46.A4	9L51.449.46.84	9L51.449.46.74
	4x54	1197x597x85	1180x580	9L51.454.46.A4	9L51.454.46.84	9L51.454.46.74
	4x80	1497x597x85	1480x580	9L51.480.46.A4	9L51.480.46.84	9L51.480.46.74

EMG - Satin aluminium "V" shape louvre with steel rods

LAMP*	W	AxBxC (mm)	f	HF	DSI	DALI
T5	3x35	1497x597x85	1480x580	9L51.335.54.A4	9L51.335.54.84	9L51.335.54.74
	3x49	1497x597x85	1480x580	9L51.349.54.A4	9L51.349.54.84	9L51.349.54.74
	3x80	1497x597x85	1480x580	9L51.380.54.A4	9L51.380.54.84	9L51.380.54.74
	4x28	1197x597x85	1180x580	9L51.428.54.A4	9L51.428.54.84	9L51.428.54.74
	4x35	1497x597x85	1480x580	9L51.435.54.A4	9L51.435.54.84	9L51.435.54.74
	4x49	1497x597x85	1480x580	9L51.449.54.A4	9L51.449.54.84	9L51.449.54.74
	4x54	1197x597x85	1180x580	9L51.454.54.A4	9L51.454.54.84	9L51.454.54.74
	4x80	1497x597x85	1480x580	9L51.480.54.A4	9L51.480.54.84	9L51.480.54.74

OPTIONS

Code	Description
W3M	Connector 3-pole wieland GST 18i3 male

* Lamps not included.
Example code for order: 9L51.335.46.74 (DALI) + W5MD + 955000 (OPTIONS)

We reserve the right to make technical changes without prior notice.
Electrical/Optical data are subjected to a tolerance of +/-10%.

DETAILS



Proteção adicional para refletor

We reserve the right to make technical changes without prior notice.
Electrical/Optical data are subjected to a tolerance of +/-10%.

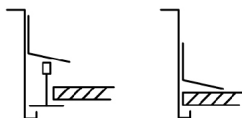
OPTIONS

Code	Description
W5M	Connector 5-pole wieland GST 18i5
W5MD	Connector 5-pole wieland GST 18i5
K3	Emergency unit 3 hours
K1	Emergency unit 1 hour
955000	Steel safety cable
--	Lamps as option a l

DIMENSIONS



FIXING SYSTEMS



Pull-up version with brackets for exposed T grids 15/24mm.

Pull-up version with brackets for plasterboard ceilings.

TO SPECIFY:

Recessed sports hall luminaire suitable for 3x35/49/80W or 4x28/35/49/54/80W T5(G5) lamps. Optional polycarbonate safety cover, dimmable version and 1 or 3 hours emergency - as Indelague EFL.

We reserve the right to make technical changes without prior notice. Electrical/Optical data are subjected to a tolerance of +/-10%.