

LED

Norms: EN 60598-1, EN 60598-2-1



IP 20



230V/50Hz

355°

90°

PRODUCT DESCRIPTION

Areas of Application: Public buildings, Housing, Offices, Hotel and Restaurant services, Art and Culture spaces.

Mounting: Wall Mounted.

Light Distribution: Direct.

Light Source: LED 4000K, CRI>80, 75.000h life (@L90, B10, Ta 25 °C).

Optical System: Lens in PMMA and Polycarbonate Diffuser.

Control Gear: LED driver, 220-240VAC-50/60Hz.

Materials: Body: Steel sheet and extruded aluminium tube.

Surface Finish: Powder coated.

Left - Direct



LED	UGR	W	Lm	η(%)	AxBxCxDxE	kg	ORDER CODE
	≤16	5	240	95	160x120x34x30x80	1,1	90078.L003.E

Right - Direct



LED	UGR	W	Lm	η(%)	AxBxCxDxE	kg	ORDER CODE
	≤16	5	240	95	160x120x34x30x80	1,1	90070.L003.E

- To complete the product add optical system. Please order separately.
- The technical data represent rated values for an 47° optic lens.

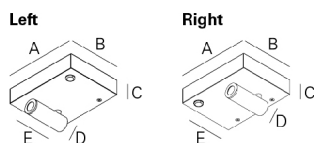
Example code for order: 90078.L003.E (ORDER CODE) + T(COLOUR/FINISH) + 926201 + USB + SENSOR + 2000 (OPTIONS)

We reserve the right to make technical changes without prior notice.
Electrical/Optical data are subjected to a tolerance of +/-10%.

COLOUR / FINISH

Code	Description
W	White
G	Grey
B	Black
U	Blue
V	Green
T	Yellow
K	Red
O	Sahara
L	Autumn
D	Golden eye
R	Rusty chain
C	Pure chocolate
N	Jungle
1	Mist
9	Dark rock
I	Carbon

DIMENSIONS



OPTIONS

Optical system



14 Lens
47 Lens
Oval Lens

Order Code
926200
926201
926202

ON/OFF Sensor



ON/OFF Sensor

Order Code
SENSOR

USB connection



USB connection

Order Code
USB

Colour temperature



2700K

Order Code
2000

DETAILS



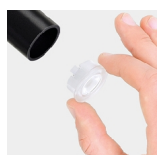
14 optical lens light effect



47 optical lens light effect



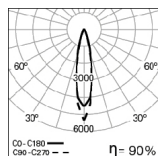
Light effect with oval lens



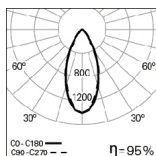
Lens fixing system detail

We reserve the right to make technical changes without prior notice.
Electrical/Optical data are subjected to a tolerance of +/-10%.

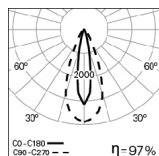
PHOTOMETRY



GLAM /W 5W
14° 4000K



GLAM /W 5W
47° 4000K



GLAM /W 5W
Oval 4000K

TO SPECIFY:

Orientable (0 -90° vertically and 0 -355° horizontally) LED wall mounted fitting. Steel sheet body and extruded aluminum tube. Standard version 4000K, CRI>80 and 75.000h lifetime LED (@L90, B10, Ta 25° C) and ON/OFF button. Possibility of choosing different beam angles (14° /47° /oval), which combined with opal diffuser gives high visual comfort. Available with ON/OFF sensor, USB connection and colour temperatures 2700K as options. Available in 16 different colours. - as Indelague GLAM /W.

We reserve the right to make technical changes without prior notice.
Electrical/Optical data are subjected to a tolerance of +/-10%.