



**LED**

Norms: EN 60598-1, EN 60598-2-1



### PRODUCT DESCRIPTION

**Areas of Application:** Commercial and Business areas, Public buildings, Housing, Offices, Art and Culture spaces.

**Mounting:** Suspended.

**Light Distribution:** Direct.


**Light Source:** LED 4000K, CRI>80, 65.000h life time (@L80, B10, Ta 25 C)

**Control Gear:** LED driver, 220-240VAC-50/60Hz.


**Materials:** Body: Steel sheet.

**Surface Finish:** Powder coated in white matt.

#### DAM - Microprismatic diffuser

LAMP	UGR	W	lm	lm/W	η(%)	AxBxC (mm)	K1	K3	kg	HF	DALI	
	LED	≤19	26	3220	97	78	1250x250x55	•	•	6,1	9W7L.026.6V.F4	9W7L.026.6V.E4
		≤22	47	6440	106	77	1250x250x55	•	•	6,1	9W7L.047.6V.F4	9W7L.047.6V.E4
		≤19	31	4025	108	83	1530x250x55	•	•	7,4	9W7L.031.6V.F4	9W7L.031.6V.E4
		≤22	57	8050	109	77	1530x250x55	•	•	7,4	9W7L.057.6V.F4	9W7L.057.6V.E4

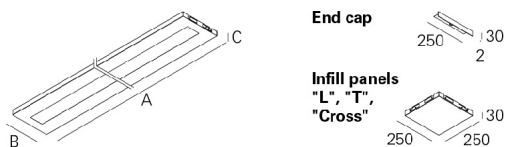
#### DOZ - Opal polycarbonate diffuser

LAMP	UGR	W	lm	lm/W	η(%)	AxBxC (mm)	K1	K3	kg	HF	DALI	
	LED	≤22	26	3220	97	78	1250x250x55	•	•	6,1	9W7L.026.2J.F4	9W7L.026.2J.E4
		≤25	47	6440	106	77	1250x250x55	•	•	6,1	9W7L.047.2J.F4	9W7L.047.2J.E4
		≤22	31	4025	105	81	1530x250x55	•	•	7,4	9W7L.031.2J.F4	9W7L.031.2J.E4
		≤25	57	8050	107	76	1530x250x55	•	•	7,4	9W7L.057.2J.F4	9W7L.057.2J.E4

#### Please note:

- To complete the product add suspension, current supply cable and ceiling rose. Please order separately.
- To complete a line, start kit will be necessary. Please order separately.
- Dimensions without end caps, please add 4mm to complete the line.

### DIMENSIONS



Example code for order: (3x) 9W7L.057.2J.E4 (DALI) + 3000 + 922100 + (2x) 9457 + (2x) 965100 + (2x) 931500 + 971700 + 940000 + (3x) 910002 (OPTIONS)

We reserve the right to make technical changes without prior notice. Electrical/Optical data are subjected to a tolerance of +/-10%.

## OPTIONS

### Colour temperature



3000K  
Tunable white

Order code  
**3000**  
**T000**

### Start Kit

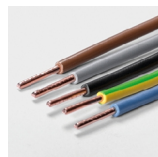


Start Kit - Start / End

• Two end caps, includes screws.

Order code  
**922100**

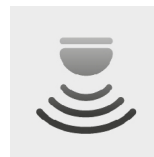
### Through-wiring



1,5mm<sup>2</sup> through-wiring  
3 x 1,5 mm<sup>2</sup>  
5 x 1,5 mm<sup>2</sup>  
7 x 1,5 mm<sup>2</sup>  
9 x 1,5 mm<sup>2</sup>  
2,5mm<sup>2</sup> through-wiring  
3 x 2,5 mm<sup>2</sup>  
5 x 2,5 mm<sup>2</sup>  
7 x 2,5 mm<sup>2</sup>  
9 x 2,5 mm<sup>2</sup>

Order code  
**9456**  
**9457**  
**9460**  
**9486**  
**9458**  
**9459**  
**9461**  
**9487**

### Light and presence sensor



Option supplied under request.

### Connectors



KIT 3-pole Mini Wieland GST15i3 (male and female) **965000**  
Connector 3-pole Mini Wieland GST15i3 male **965001**  
Connector 3-pole Mini Wieland GST15i3 female **965002**  
KIT 5-pole Mini Wieland GST15i5 DIM (male and female) **965100**  
Connector 5-pole Mini Wieland GST15i5 DIM male **965101**  
Connector 5-pole Mini Wieland GST15i5 DIM female **965102**

Order code  
**965000**  
**965001**  
**965002**  
**965100**  
**965101**  
**965102**

### Current supply cable



1,5m transparent cable 0,75mm<sup>2</sup>  
3 x 0,75 mm<sup>2</sup>  
5 x 0,75 mm<sup>2</sup>  
1,5m transparent cable 1,5mm<sup>2</sup>  
3 x 1,5 mm<sup>2</sup>  
5 x 1,5 mm<sup>2</sup>  
7 x 1,5 mm<sup>2</sup>  
9 x 1,5 mm<sup>2</sup>

Order code  
**940400**  
**940500**  
**940300**  
**940000**  
**940100**  
**941200**

### Body connector Kit

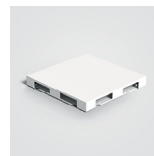


Body connector Kit

• Galvanised connector, includes screws.

Order code  
**931500**

### Infill panels



Infill panel "L"  
Infill panel "T"  
Infill panel "Cross"

Order code  
**992200**  
**992201**  
**992203**

### Ceiling rose



Square ceiling rose  
Surface mounted  
Recessed

Order code  
**971700**  
**971400**

### Suspension



Suspension type "I" (x4)

Order code  
**910002**

We reserve the right to make technical changes without prior notice.  
Electrical/Optical data are subjected to a tolerance of +/-10%.

### Emergency unit

Order code

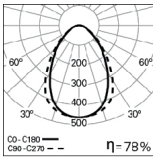


Emergency unit 3 hours  
Emergency unit 1 hour

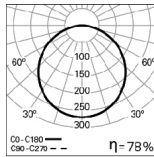
**K3**  
**K1**

- Test function by telecommand signal.

### PHOTOMETRY



**HERMES Line 26W  
DAM 4000K**



**HERMES Line 26W  
DOZ 4000K**

#### TO SPECIFY:

Suspended LED luminaire for continuous line. Available in 2 sizes (1250/1530x250mm) with opal or microprismatic diffuser for light glare control UGR<19, according to EN 12464-1. Standard version with 4000K, CRI>80 and 65.000h lifetime (@ L80, B10, Ta 25 C). Optional DALI dimmable driver, 3000K, suspension, transparent current supply cable, ceiling rose, light and presence sensor and 1 or 3 hours emergency unit. - as Roxo Lighting HERMES Line