

## ROFY 60 | ROFY 60 D/I

**EN** INSTALLATION INSTRUCTIONS  
**FR** NOTICE DE MONTAGE  
**DE** MONTAGE-ANLEITUNG  
**PT** INSTRUÇÕES DE MONTAGEM  
**ES** INSTRUCCIONES DE MONTAJE



**EN** FOR MOUNTING THE SURFACE OR SUSPENDED VERSIONS, PLEASE READ THE SUPPLEMENTARY MANUALS.

**FR** POUR LE MONTAGE DES VERSIONS SAILLIE OU SUSPENDUES, VEUILLEZ LIRE LES MANUELS SUPPLÉMENTAIRES.

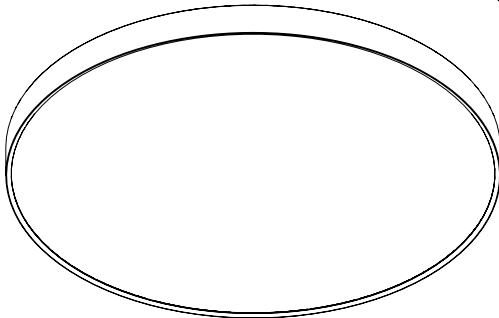
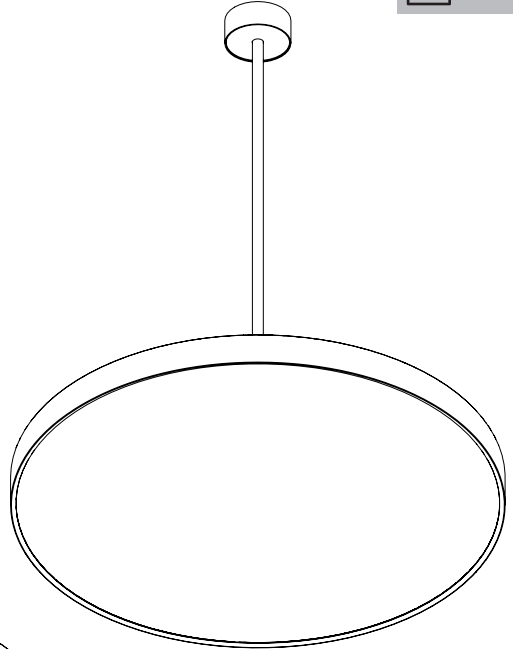
**DE** LESEN SIE ZUR MONTAGE DER ANBAU-HÄNGEVERSION ODER PENDEL-HÄNGEVERSION, DIE ZUSÄTZLICHE ANLEITUNGEN.

**PT** PARA A MONTAGEM DAS VERSÕES SALIENTES OU SUSPENSAS POR FAVOR, CONSULTE OS MANUAIS COMPLEMENTARES.

**ES** PARA MONTAR LAS VERSIONES EN SUPERFICIE O SUSPENDIDAS LEA LOS MANUALES COMPLEMENTARIOS.



**IIV683 | IIV728 |  
IIV743 | IIV792**

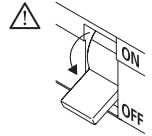


Order code / Code com. / Bestell-Nr. / Código / Código: 90583L... | 90584L... | 90585L... | 90586L... | 90587L... | 90588L... | 90589L... | 90590L...



**EN** Please read carefully the installation instructions given before installing the appliance, the general terms and conditions of use and environmental concern with recycling attached. | **FR** Lire attentivement les notices de montage avant l'installation de l'appareil, les conditions générales de ventes et les précautions écologiques liées aus recyclage ci-jointes. | **DE** Bitte lesen Sie sorgfältig die Montage-Anleitung, die Sie vorder Montage des Geräts erhalten haben, Allgemeinen Geschäftsbedingungen und Umweltbewusstsein über Recycling angeschlossen. | **PT** Leia atentamente as instruções de montagem fornecidas antes de instalar o aparelho, as condições gerais de uso e preocupação ambiental com a reciclagem, em anexo. | **ES** Lea atentamente las instrucciones de montaje proporcionadas antes de instalar el aparato, las condiciones generales de uso y la preocupación medioambiental con el reciclaje, que se adjuntan.

# ROFY 60 | ROFY 60 D/I

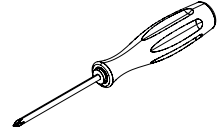


## AxBxC (mm)

Ø300x85  
Ø400x85  
Ø600x85  
Ø900x85  
Ø1150x85

## TOOLS

Phillips screwdriver



## EN INSTRUCTIONS FOR INSTALLATION AND OPERATION!

THE INSTALLATION AND COMMISSIONING OF THE LUMINAIRE, AS WELL AS ANY MODIFICATION TO THE LUMINAIRE, MAY ONLY BE PERFORMED BY AUTHORIZED PERSONNEL (QUALIFIED ELECTRICIAN). NATIONAL INSTALLATION REGULATIONS MUST BE OBSERVED. BEFORE ANY WORK ON THE APPLIANCE IS DONE, IT MUST BE DISCONNECTED FROM MAINS.

**HOT PLUG-IN NOT AN OPTION AND MAY CAUSE DAMAGE TO THE LAMP OR LUMINAIRE!**

THE MANUFACTURER IS NOT LIABLE FOR DAMAGES RESULTING FROM IMPROPER OR FAULTY INSTALLATION OR OPERATION OR UNAUTHORIZED MODIFICATIONS TO THE LUMINAIRE.

THE LIGHT SOURCE CONTAINED IN THIS LUMINAIRE SHALL ONLY BE REPLACED BY THE MANUFACTURER.

**CAUTION, RISK OF ELECTRIC SHOCK!**

EN WE RESERVE THE RIGHT TO MAKE CHANGES ON TECHNICAL SPECIFICATIONS, DESIGN AND INSTALLATION LEAFLET WITHOUT PRIOR NOTICE. IF YOU HAVE QUESTIONS, PLEASE CONTACT THE MANUFACTURER.

**LUMINAIRE MATERIALS!**

AGGRESSIVE CHEMICALS, IN DIRECT CONTACT WITH THE LUMINAIRE OR IN THE FORM OF AIRBORNE SUBSTANCES, CAN DAMAGE THE FITTING. SO CAN UNSUITABLE CLEANING AGENTS.

## FR NOTICE D'UTILISATION ET MISE EN SERVICE

L'INSTALLATION ET LA MISE EN SERVICE DU LUMINAIRE AINSI QUE TOUTE MODIFICATION AU LUMINAIRE DOIVENT ÊTRE EFFECTUÉES PAR UN PERSONNEL AUTORISÉ (ÉLECTRICIEN QUALIFIÉ). LES RÈGLES NATIONALES D'INSTALLATION DOIVENT ÊTRE RESPECTÉES. AVANT TOUTE INTERVENTION SUR L'APPAREIL, IL DOIT ÊTRE DÉBRANCHÉ DE SON ALIMENTATION.

**LE BRANCHEMENT À CHAUD EST INTERDIT, ET PEUT ENDOMMAGER LES LEDS OU LE LUMINAIRE!**

LE FABRICANT DÉCLINE TOUT RESPONSABILITÉ POUR LES DOMMAGES RESULTANT D'UNE MAUVAISE INSTALLATION OU OPÉRATION, OU D'UNE MODIFICATION NON AUTORISÉE DU LUMINAIRE.

LA SOURCE LUMINEUSE PRÉSENTE DANS LE LUMINAIRE NE PEUT ÊTRE REMPLACÉE QUE PAR LE FABRICANT.

**AVERTISSEMENT; RISQUE DE CHOC ÉLECTRIQUE.**

SOUS RÉSERVE DE MODIFICATIONS AU NIVEAU DE LA CONCEPTION, DES SPÉCIFICATIONS TECHNIQUES ET DE LA NOTICE. POUR TOUT QUESTION, CONTACTEZ LE FABRICANT.

**NOTICE IMPORTANTE!**

LES AGENTS CHIMIQUES, EN CONTACT DIRECT AVEC LE LUMINAIRE OU SANS FORME DE PARTICULES EN SUSPENSION DANS L'AIR, DE MÊME QUE LES MÉTHODES DE NETTOYAGE INADÉQUATES PEUVENT ENTRAÎNER UNE DÉTÉRIORATION DU LUMINAIRE!

## DE HINWEISE FÜR DIE MONTAGE UND DEN BETRIEB!

DIE MONTAGE UND INBETRIEBNAHME DER LEUCHE SOWIE JEDE VERÄNDERUNG AN DER LEUCHE DRAUF NUR VON AUTORISIERTEN FACHKRÄFTEN (QUALIFIZIERTER ELEKTRIKER) DURCHFÜHRT WEDEN. DIE NATIONAL EN ERRICHTERBESTIMMUNGEN SIND ZU BEACHTEN. VOR JEDER ARBEIT AN DER LEUCHE IST DIESE VOM NETZ ZU TRENNEN.

**HOT PLUG-IN NICHT MÖGLICH UND KANN ZU SCHÄDEN AN DER LEUCHE FÜHREN!**

DER HERSTELLER HAFTET NICHT FÜR SCHÄDEN, DIE AUS FEHLERHAFTER MONTAGE, AUS UNSACHGEMASSEM BETRIEB ODER UNAUTORISIERTEN VERÄNDERUNGEN AN DER LEUCHE RESULTIEREN.

DIE LICHTQUELLE DIESER LEUCHE DARF NUR VOM HERSTELLER ODER EINEM VON IHM BEAUFTRAGTEN SERVICE TECHNIKER.

**VORSICHT, GEFAHR EINES ELEKTRISCHEN SCHLAGS.**

ÄNDERUNGEN VON ENTWURF, TECHNISCHEN DATEN UND BEDIENUNGSANLEITUNGEN BLEIBEN VORBEHALTEN. BEI FRAGEN WENDEN SIE SICH AN DEN HERSTELLER.

**MATERIALHINWEIS!**

CHEMISCHE EINFLÜSSE, SEI ES DURCH DIREKTEN KONTAKT ODER DURCH IN DER ATMOSPHÄRE SCHWEBENDE STOFFE UND UNGEEIGNETE REINIGUNGSMETHODEN KÖNNEN ZU EINER BESCHÄDIGUNG DER LEUCHE FÜHREN!

## PT INSTRUÇÕES DE INSTALAÇÃO E OPERAÇÃO!

A INSTALAÇÃO E COMISSONAMENTO DA LUMINÁRIA, BEM COMO QUALQUER MODIFICAÇÃO NA LUMINÁRIA, SÓ PODEM SER REALIZADAS POR PESSOAL AUTORIZADO (ELECTRICISTA QUALIFICADO). OS REGULAMENTOS NACIONAIS DE INSTALAÇÃO DEVEM SER CUMPRIDOS. ANTES DE QUALQUER TRABALHO NO APARELHO, ELE DEVE SER DESLIGADO DA REDE ELÉTRICA.

**O HOT PLUG-IN NÃO É UMA OPÇÃO E PODE CAUSAR DANOS AO LED OU LUMINÁRIA!**

O FABRICANTE NÃO É RESPONSÁVEL POR DANOS RESULTANTES DE INSTALAÇÃO OU OPERAÇÃO INADEQUADA OU DEFETUOSA OU DE MODIFICAÇÕES NÃO AUTORIZADAS NA LUMINÁRIA.

A FONTE DE LUZ CONTIDA NESTA LUMINÁRIA DEVE SER SUBSTITUÍDA APENAS PELO FABRICANTE.

**CUIDADO, RISCO DE CHOQUE ELÉTRICO!**

O FABRICANTE RESERVA-SE NO DIREITO DE REALIZAR MODIFICAÇÕES NO DESENHO, ESPECIFICAÇÕES TÉCNICAS E FOLHETO, SEM AVISO PRÉVIO. SE VOCÊ TIVER ALGUMA DÚVIDA, ENTRE EM CONTATO COM O FABRICANTE.

**MATERIAIS DE LUMINÁRIA!**

PRODUTOS QUÍMICOS AGRESSIVOS, EM CONTATO DIRETO COM A LUMINÁRIA OU NA FORMA DE SUBSTÂNCIAS TRANSPORTADAS PELO AR, PODEM DANIFICAR A LUMINÁRIA. PRODUTOS DE LIMPEZA INADEQUADOS TAMBÉM PODEM.

**ES ¡INSTRUCCIONES PARA LA INSTALACIÓN Y FUNCIONAMIENTO!**  
LA INSTALACIÓN Y LA PUESTA EN MARCHA DE LA LUMINARIA, ASÍ COMO CUALQUIER MODIFICACIÓN DE LA MISMA, SOLO PUEDEN SER REALIZADAS POR PERSONAL AUTORIZADO (ELECTRICISTA CUALIFICADO).

DEBEN RESPETARSE LOS REGLAMENTOS NACIONALES DE INSTALACIÓN. ANTES DE REALIZAR CUALQUIER TRABAJO EN EL EQUIPO, DEBE SER DESCONECTADO DE LA RED.

**HOT PLUG-IN NO ES UNA OPCIÓN Y PUEDE CAUSAR DAÑO A ¡LA LÁMPARA O LA LUMINARIA!**

EL FABRICANTE NO ES RESPONSABLE DE LOS DAÑOS RESULTANTES DE UNA INSTALACIÓN O PUESTA EN MARCHA INCORRECTA, O FALLIDA, POR LAS MODIFICACIONES NO AUTORIZADAS EN LA LUMINARIA.

LA FUENTE DE LUZ CONTENIDA EN ESTA LUMINARIA, SOLO SERÁ REEMPLAZADA POR EL FABRICANTE.

**¡PRECAUCIÓN, RIESGO DE DESCARGA ELÉCTRICA!**

EL FABRICANTE SE RESERVA EL DERECHO DE REALIZAR MODIFICACIONES EN EL DISEÑO, LAS ESPECIFICACIONES TÉCNICAS Y EL FOLLETO. SI TIENE PREGUNTAS, CONTACTE CON EL FABRICANTE.

**¡MATERIALES DE LA LUMINARIA!**

PRODUCTOS QUÍMICOS AGRESIVOS, EN CONTACTO DIRECTO CON LA LUMINARIA O EN FORMA DE SUSTANCIAS EN EL AIRE, PUEDE

DAÑAR LOS MATERIALES, ASÍ COMO UN AGENTE DE LIMPIEZA INADECUADO.



**EN CAUTION, RISK OF ELECTRIC SHOCK.**

**FR ATTENTION, RISQUE DE CHOC ÉLECTRIQUE.**

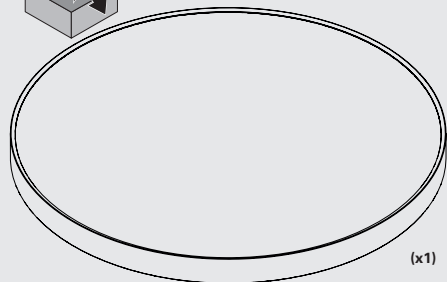
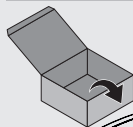
**DE ACHTUNG, GEFAHR EINES STROMSCHLAGS.**

**PT CUIDADO, RISCO DE CHOQUE ELÉTRICO.**

**ES PRECAUCIÓN, RIESGO DE DESCARGA ELÉCTRICA.**

### ROFY 60 | ROFY 60 D/I

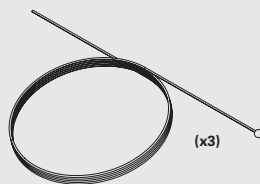
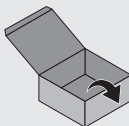
90583L... | 90584L... | 90585L... | 90586L... | 90587L... |  
90588L... | 90589L... | 90590L...



### S10 SUSPENSION SUSPENSION S10 SEILABHÄNGUNG S10 SUSPENSÃO S10 SUSPENSIÓN S10

+   
**IIV728**

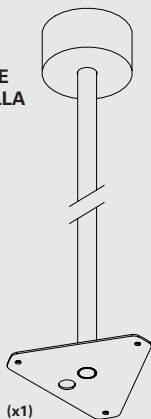
911100...



### ROD SUSPENSION SUSPENSION PARTIGE PENDELROHR SUSPENSÃO EM HASTE SUSPENSIÓN EN VARILLA

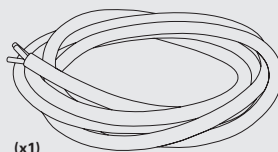
+   
**IIV792**

913000... | 913010...



### CURRENT SUPPLY CABLE CÂBLE D'ALIMENTATION EINSPEISUNGSKABEL CABO DE ALIMENTAÇÃO CABLE DE ALIMENTACIÓN

9404... | 9405... | 9406...

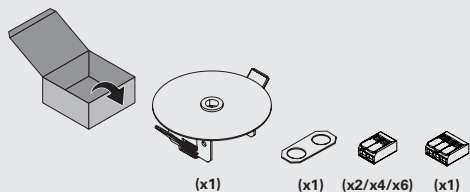


**CEILING ROSE  
PATÈRE DE SUSPENSION  
DECKENDOSE  
CAIXA DE ALIMENTAÇÃO  
BASE DE TECTO**



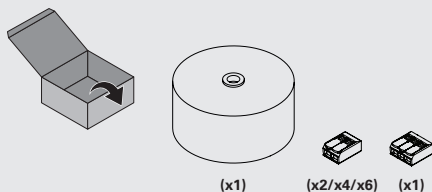
9713...

RECESSED CEILING ROSE T5 D90  
PATÈRE DE SUSPENSION ENCASTRÉE T5 D90  
DECKENDOSEN ZUM EINBAUT5 D90  
CAIXA DE ALIMENTAÇÃO ENCASTRAR T5 D90  
BASE DE TECTO DE EMPOTRAR T5 D90



978600...

SURFACE MOUNTED CEILING ROSE T24 D95  
PATÈRE DE SUSPENSION SAILLIE T24 D95  
DECKENDOSE ZUM ANBAU T24 D95  
CAIXA DE ALIMENTAÇÃO SALIENTE T24 D95  
BASE DE TECTO DE SUPERFICIE T24 D95

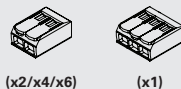
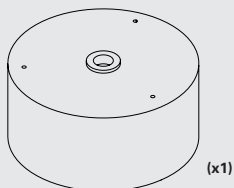
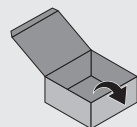


**CENTRAL CEILING ROSE  
PATÈRE DE SUSPENSION CENTRALE  
ZENTRALE DECKENDOSE  
CAIXA DE ALIMENTAÇÃO CENTRAL  
BASE DE TECTO CENTRAL**



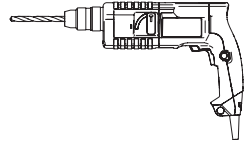
977211...

CENTRAL CEILING ROSE T21 3I D95  
PATÈRE DE SUSPENSION CENTRALE T21 3I D95  
ZENTRALE DECKENDOSE T21 3I D95  
CAIXA DE ALIMENTAÇÃO CENTRAL T21 3I D95  
BASE DE TECTO CENTRAL T21 3I D95



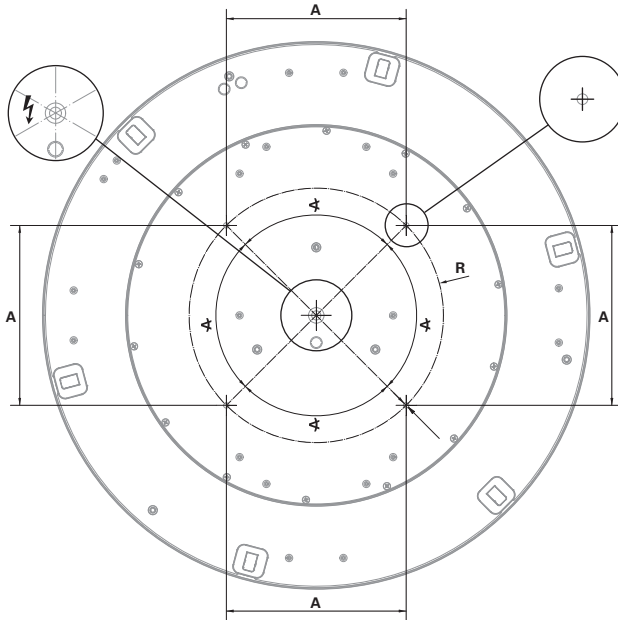
# ROFY 60

**SURFACE MOUNTED**  
**SAILLIE**  
**OBERFLÄCHENMONTAGE**  
**SALIENTE**  
**SUPERFICIE**



	ROFY 60		ROFY 60 D/I		
⊙	R	∠	A	Fixings	
⊙300x60	75	120°	130	3	
⊙400x60	87.5	90°	124	4	
⊙600x60	140	90°	198	4	
⊙900x60	175	90°	247	4	
⊙1150x60	225	90°	318	4	

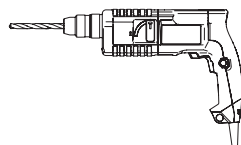
⊙ (mm)  
 ⊙300x60  
 ⊙400x60  
 ⊙600x60  
 ⊙900x60  
 ⊙1150x60



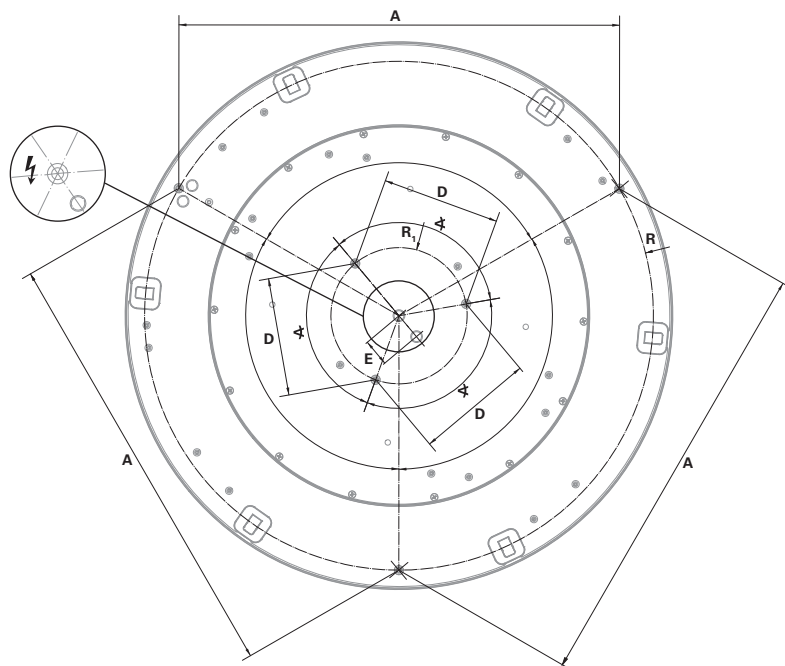
# ROFY 60 | ROFY 60 D/I

**SUSPENDED**  
**SUSPENDU**  
**SUSPENDIERT**  
**SUSPENSO**  
**SUSPENDIDO**

ROFY 60   ROFY 60 D/I								
⊕	SIDE SUSPENSION				CENTRAL SUSPENSION			
	R	∠	A	Fixings	R <sub>1</sub>	D	E	Fixings
ø300x85	130		225					
ø400x85	180		312					
ø600x85	280	120°	485	3	75	130	30	3
ø900x85	300		572				30	
ø1150x85	380		658				30	



(mm)  
 ø300x85  
 ø400x85  
 ø600x85  
 ø900x85  
 ø1150x85



## ROFY 60

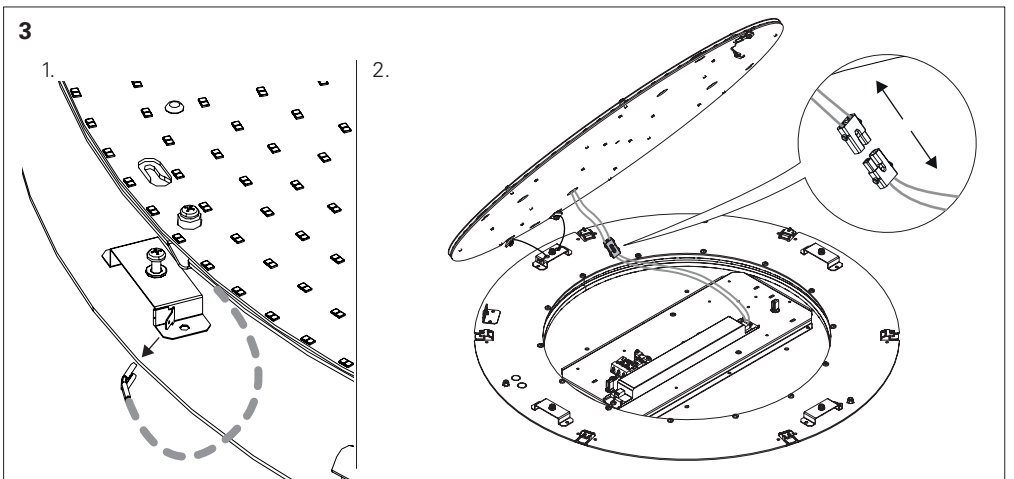
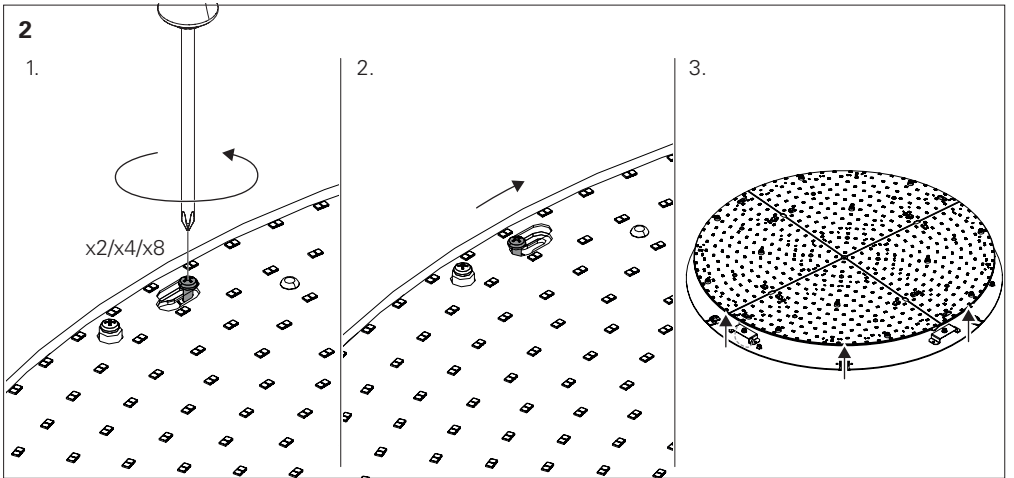
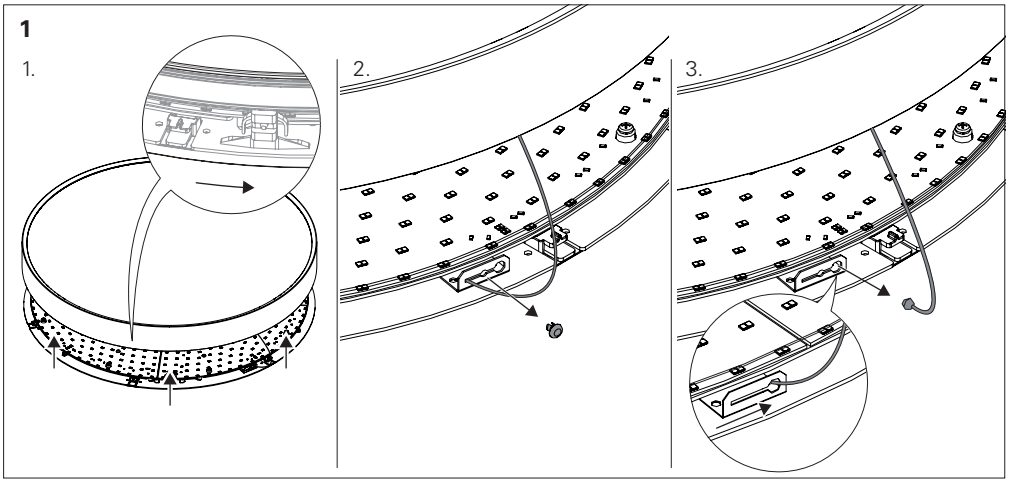
**EN** SURFACE MOUNTED  
**FR** SAILLIE  
**DE** AUFBAU  
**PT** SALIENTE  
**ES** SUPERFICIE

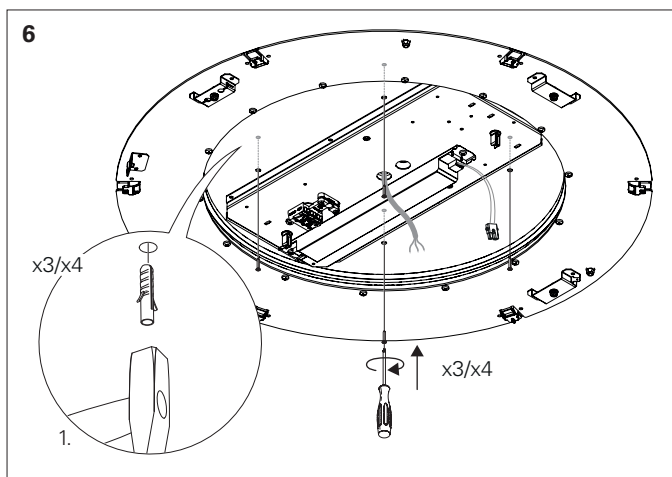
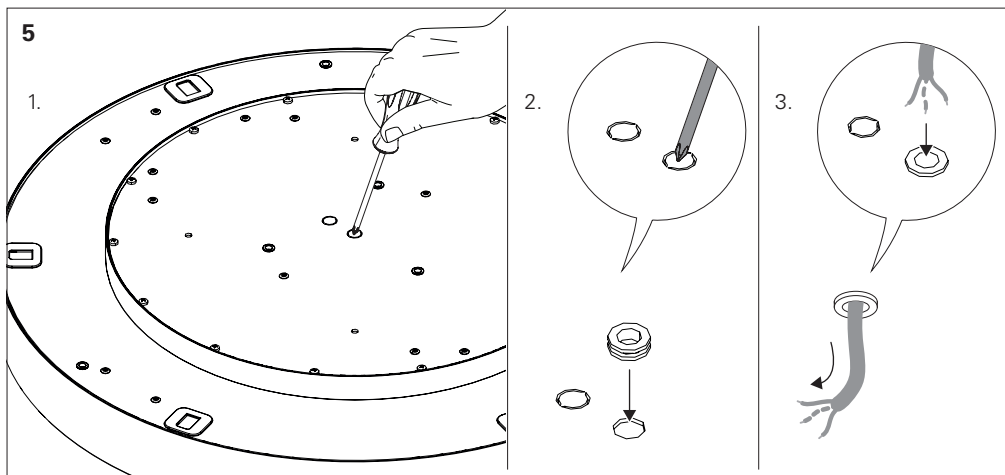
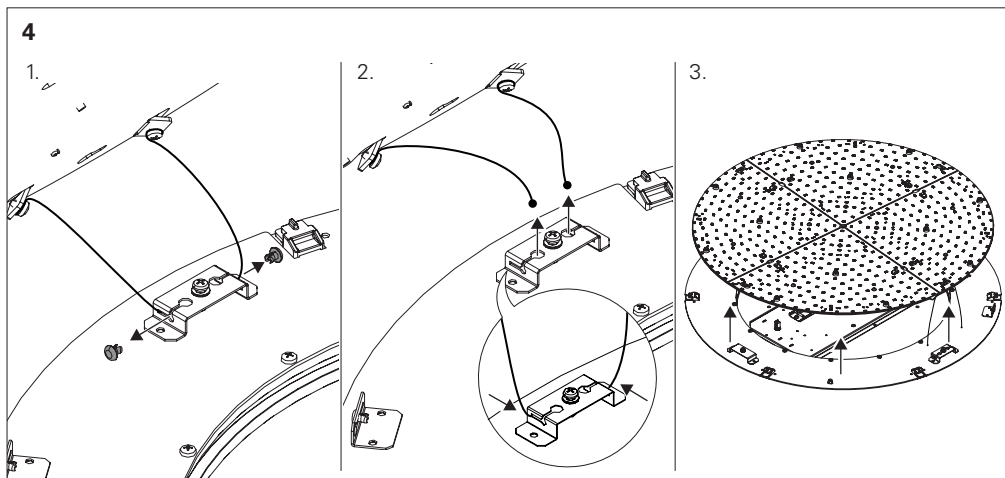


FOR SUSPENDED VERSION READ:  
 POUR LA VERSION SUSPENDUE LIRE:  
 FÜR DIE HÄNGEVERSION LESEN SIE:  
 PARA VERSAO SUSPENSADA LER:  
 PARA LA VERSIÓN SUSPENDIDA LEER:



**IIV683** or/ou/  
 oder/  
**IIV728** ou/o  
**IIV743**  
**IIV753**





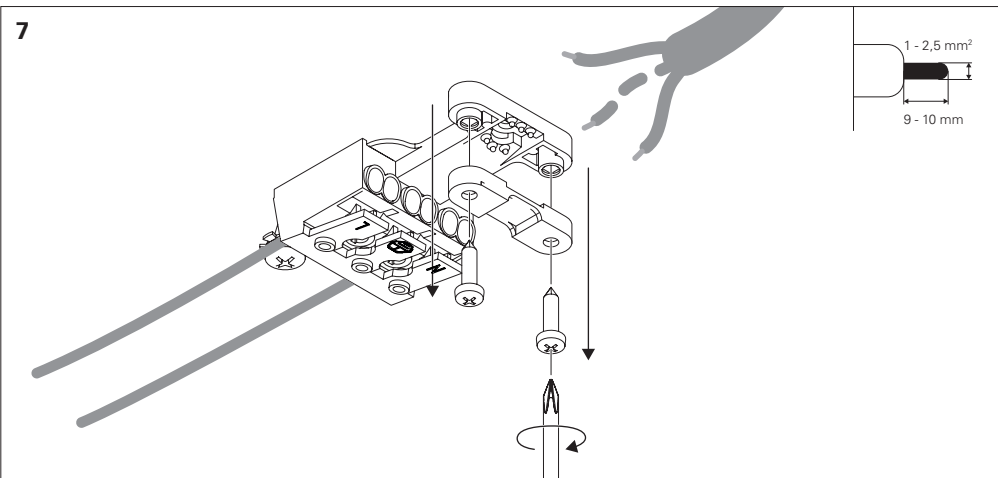
FOR SUSPENDED VERSION READ:  
 POUR LA VERSION SUSPENDUE LIRE:  
 FÜR DIE HÄNGEVERSION LESEN SIE:  
 PARA VERSÃO SUSPensa LEER:  
 PARA LA VERSION SUSPENDIDA LEER:



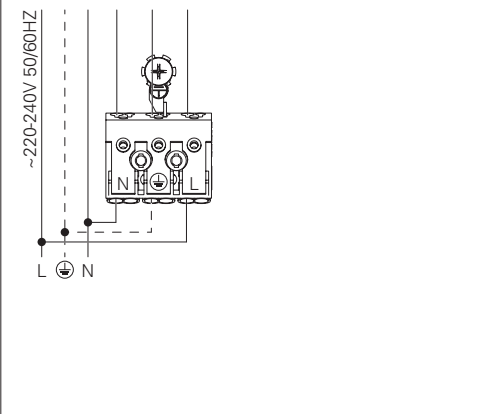
**IIV683** or/ou/  
 oder/  
**IIV728** ou/o  
**IIV743**  
**IIV753**



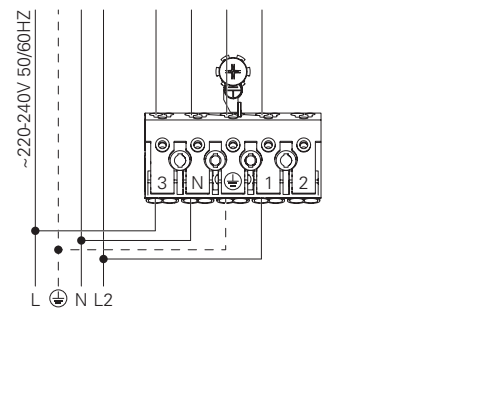
7



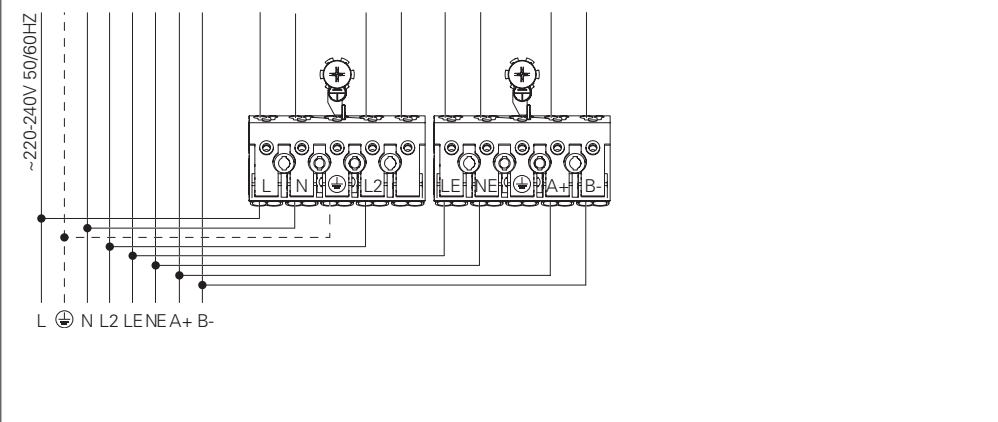
8 - HF



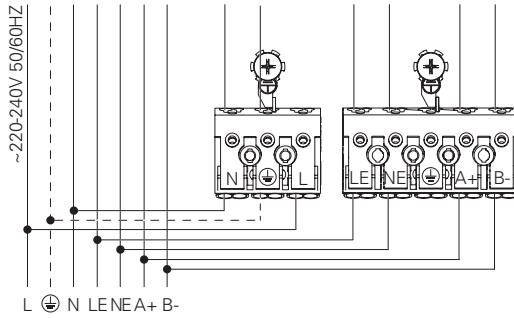
HF + CD



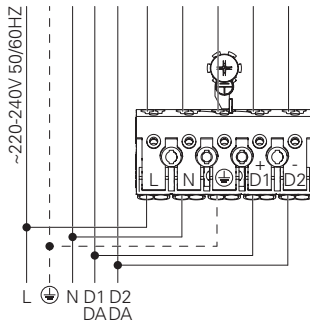
8 - HF + CD + K3 + TEL.



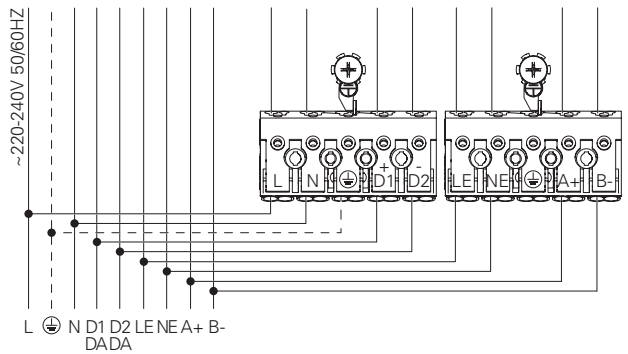
### 8 - HF + K3 + TEL.



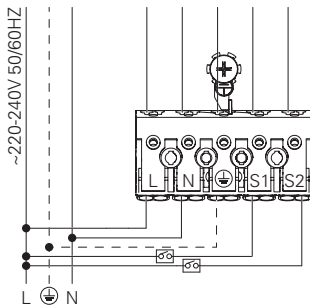
### 8 - DALI



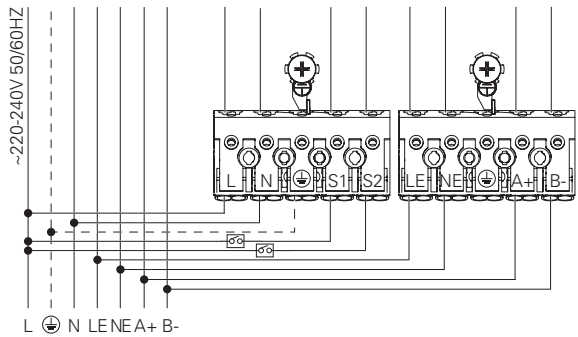
### DALI + K3 + TEL.



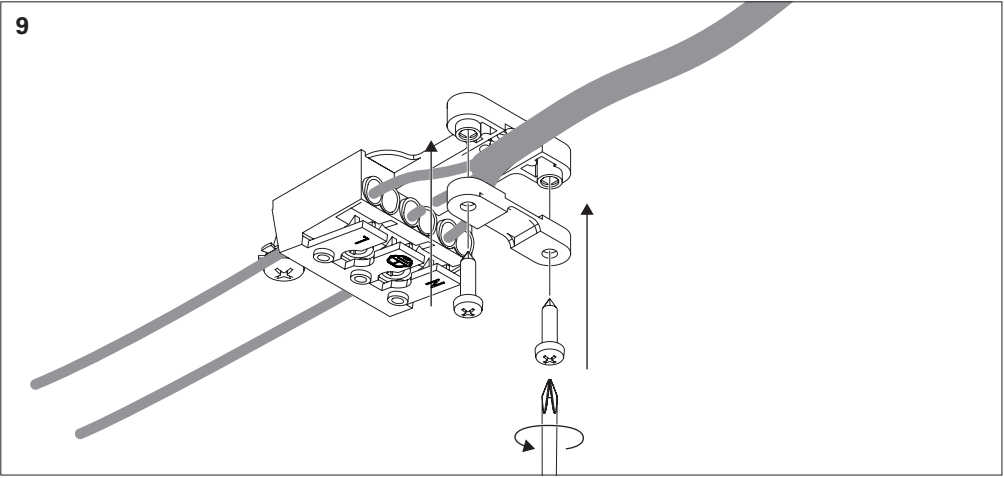
### 8 - SWD + CD (ROFY 60 D/I)



### SWD + CD + K3 + TEL (ROFY 60 D/I)

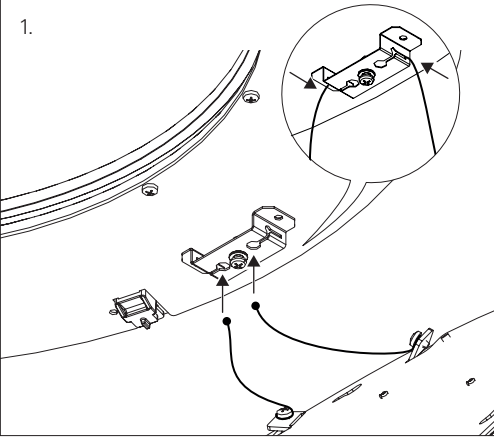


9

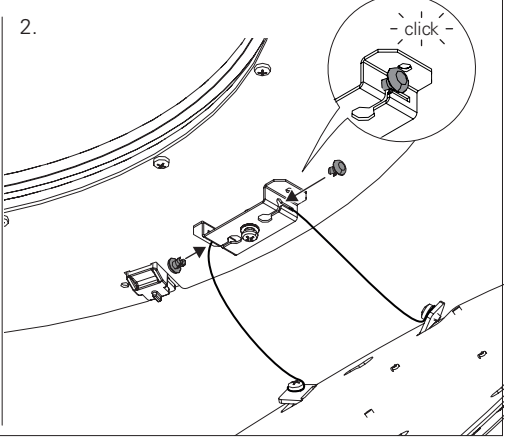


10

1.

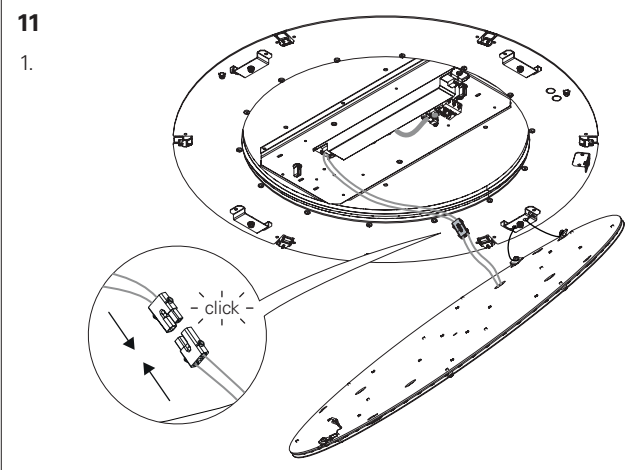


2.

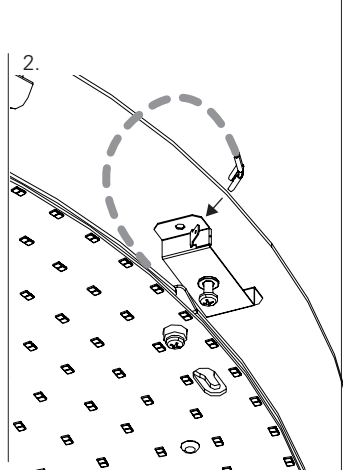


11

1.

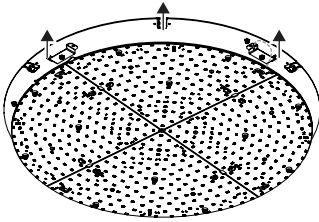


2.

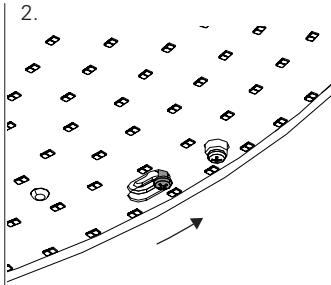


## 12

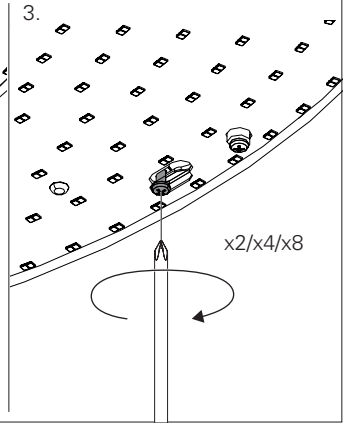
1.



2.

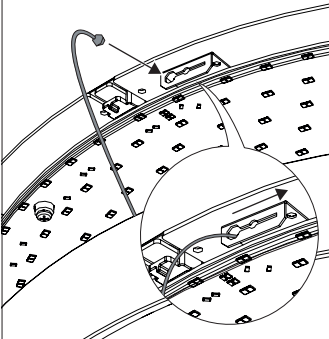


3.

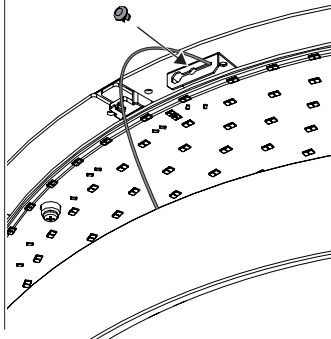


## 13

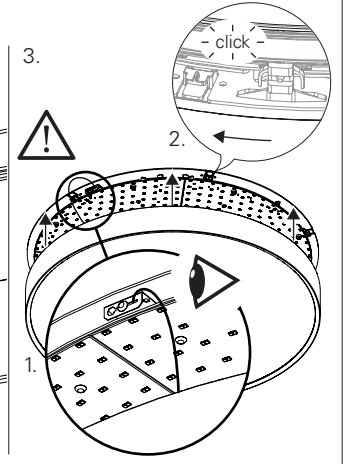
1.



2.



3.



## 14

### ROFY 60 | ROFY 60 D/I

EN THIS PRODUCT'S LIGHT SOURCE IS ENERGY CLASS:

FR LA SOURCE LUMINEUSE CONTENUE DANS CE PRODUIT EST DE LA CLASSE ÉNERGÉTIQUE:

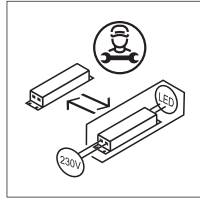
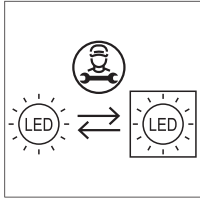
DE DIE IN DIESEM PRODUKT ENTHALTENE LICHTQUELLE ENTSPRICHT DER ENERGIEKLASSE:

PT A FONTE DE LUZ CONTIDA NESTE PRODUTO É DA CLASSE ENERGÉTICA:

ES LA FUENTE DE LUZ CONTENIDA EN ESTE PRODUCTO ES DE CLASE ENERGÉTICA:

Ø	3000K	4000K
300	D	C
400		
600	C	C
900		
1150		

## Info on (non-) replaceability:



SEE THE SERVICES, TERMS AND CONDITIONS AT:  
CONSULTEZ LES SERVICES, LES TERMES ET LES CONDITIONS À L'ADRESSE SUIVANTE  
KONSULTIEREN SIE DIE DIENSTLEISTUNGEN UND BEDINGUNGEN UNTER:  
CONSULTE OS SERVIÇOS, TERMOS E CONDIÇÕES EM:  
CONSULTE LOS SERVICIOS, TÉRMINOS Y CONDICIONES EN:  
[WWW.INDELAGUE.COM](http://WWW.INDELAGUE.COM) | [WWW.ROXOLIGHTING.COM](http://WWW.ROXOLIGHTING.COM)