



Norms: EN 60598-1, EN 60598-2-1



PRODUCT DESCRIPTION

Areas of Application: Industrial areas, commercial areas.

Mounting: Surface/Wall Mounted.

Light Distribution: Direct.

Control Gear: Electronic equipment
220-240VAC-50/60Hz.

Materials: Body: Steel sheet.
End cap: Injected ABS.

Surface Finish: Powder coated in white matt (RAL9016).

LAMP*	⚡	W	η(%)	AxBxC (mm)	B1 (mm)	K1	K3	Kg	HF	DSI	DALI
T8	G13	1x18	90	620x55x85	-	-	-	1,1	9N1W.114.56.A4	--	--
	G13	1x36	91	1230x55x85	-	•	•	1,2	9N1W.124.56.A4	9M63.136.56.84	9M63.136.56.74
	G13	1x58	92	1530x55x85	-	•	•	1,6	9N1W.128.56.A4	9M63.158.56.84	9M63.158.56.74
	G13	2x18	86	-	100	-	-	1,2	9N1W.135.56.A4	--	--
	G13	2x36	85	-	100	•	•	1,3	9N1W.149.56.A4	9M63.236.56.84	9M63.236.56.74
	G13	2x58	83	-	100	•	•	1,7	9N1W.154.56.A4	9M63.258.56.84	9M63.258.56.74

OPTIONS

Code	Description
W3M	Connector 3-pole mini wieland GST15i3 male.
W3MFC	Connector 3-pole mini wieland GST15i3 male + 1m cable with 3-pole mini wieland GST15i3 female.
K3	Emergency unit 3 hours.
K1	Emergency unit 1 hours.
--	Lamps as optional.

DETAILS



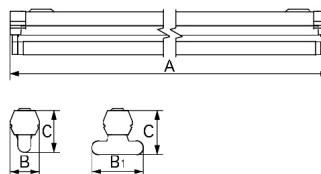
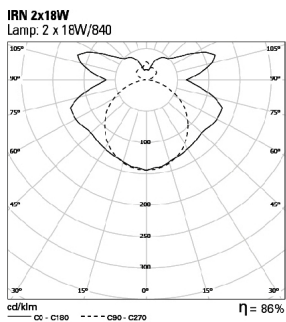
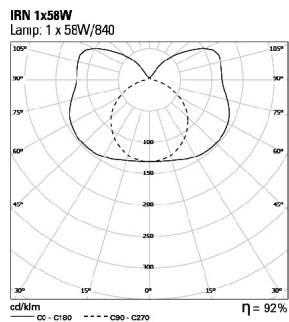
Clip-in cover

* Lamp not included.
Example code for order: 9M63.158.56.74 (DALI) (OPTIONS)

We reserve the right to make technical changes without prior notice.
Electrical/Optical data are subjected to a tolerance of +/-10%.

PHOTOMETRY

DIMENSIONS



TO SPECIFY:

Single or twin batten for 18/36/58W T8(G13) fluorescent lamps. Optional connectors, dimmable version and 1 or 3 hours emergency available – as Roxo Lighting IRN.

We reserve the right to make technical changes without prior notice. Electrical/Optical data are subjected to a tolerance of +/-10%.