



LED



Norms: EN 60598-1, EN 60598-2-1

CE IP 20

### PRODUCT DESCRIPTION

**Areas of Application:** Commercial and Business areas, Public buildings, Housing, Offices, Hotel and Restaurant services, Art and Culture spaces.

**Mounting:** Wall Mounted.

**Light Distribution:** Direct/Indirect.

**Light Source:** LED 4000K, CRI>80, 50.000h life.

**Materials:** Body: Extruded aluminium.

**Surface Finish:** Powder coated.

Direct/Indirect

LED	W	Lm	η(%)	AxBxC (mm)	Kg	ORDER CODE
	26	1280	97	Ø80x190x102	1	90177.L213.0

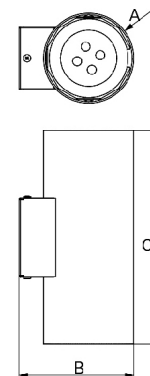
### COLOUR / FINISH

Code	Description
W	White (RAL 9016)
B	Black (RAL 9005)
G	Grey (RAL 9006)
U	Blue (RAL 5002)
K	Red (RAL 3020)
V	Green (RAL 6018)
T	Yellow (RAL 1021)

### OPTIONS

Code	Description
3000	Colour temperature 3000K.

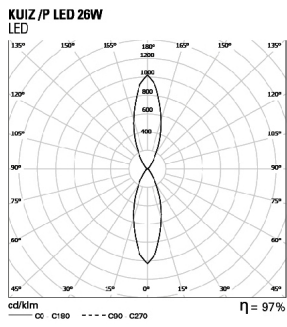
### DIMENSIONS



Example code for order: 90177.L213.0 (ORDER CODE) + W (COLOUR/FINISH) + 3000 (OPTIONS)

We reserve the right to make technical changes without prior notice. Electrical/Optical data are subjected to a tolerance of +/-10%.

### PHOTOMETRY



#### TO SPECIFY:

Wall mounted direct/indirect LED round spotlight, with integral 2x640 lumen light engine. Optional 3000K, white, grey, black, red, yellow, green or blue finish - as Roxo Lighting KUIZ /P LED.

We reserve the right to make technical changes without prior notice.  
Electrical/Optical data are subjected to a tolerance of +/-10%.