



Norms: EN 60598-1, EN 60598-2-2



650°C 230V/50Hz

PRODUCT DESCRIPTION

Areas of Application: Commercial and Business areas, Public buildings, Offices, Schools, Corridors.

Mounting: Ceiling recessed.

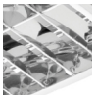
Light Distribution: Direct.

Control Gear: Electronic equipment, 220-240VAC-50/60Hz.


Materials: Body: Steel sheet.

Surface Finish: Powder coated in white matt (RAL9016).

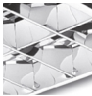
PB - Polished parabolic aluminium louvre

LAMP*	UGR	W	η(%)	AxBxC (mm)	h	Kg	HF	DSI	DALI	
	T8	≤16	2x36	55	1196x296x105	1179x279	4,5	9964.236.80.A4	9964.236.80.84	9964.236.80.74
		≤16	2x58	52	1496x296x105	1479x279	5,4	9964.258.80.A4	9964.258.80.84	9964.258.80.74
		≤16	3x18	60	596x596x105	579x579	4,3	9964.318.80.A4	9964.318.80.84	9964.318.80.74
		≤16	4x18	61	596x596x105	579x579	4,3	9964.418.80.A4	9964.418.80.84	9964.418.80.74


PM - Satin parabolic aluminium louvre

LAMP*	UGR	W	η(%)	AxBxC (mm)	h	Kg	HF	DSI	DALI	
	T8	≤16	2x36	50	1196x296x105	1179x279	4,5	9964.236.94.A4	9964.236.94.84	9964.236.94.74
		≤16	2x58	46	1496x296x105	1479x279	5,4	9964.258.94.84	9964.258.94.84	9964.258.94.84
		≤16	3x18	51	596x596x105	579x579	4,3	9964.318.94.A4	9964.318.94.84	9964.318.94.74
		≤16	4x18	53	596x596x105	579x579	4,3	9964.418.94.A4	9964.418.94.84	9964.418.94.74

EB - Polished parabolic "V" aluminium louvre

LAMP*	UGR	W	η(%)	AxBxC (mm)	h	Kg	HF	DSI	DALI	
	T8	≤16	2x36	53	1196x296x105	1179x279	4,5	9964.236.35.A4	9964.236.35.84	9964.236.35.74
		≤16	2x58	50	1496x296x105	1479x279	5,4	9964.258.35.A4	9964.258.35.84	9964.258.35.74
		≤16	3x18	62	596x596x105	579x579	4,3	9964.318.35.A4	9964.318.35.84	9964.318.35.74
		≤16	4x18	58	596x596x105	579x579	4,3	9964.418.35.A4	9964.418.35.84	9964.418.35.74

EM - Mate parabolic "V" aluminium louvre

LAMP*	UGR	W	η(%)	AxBxC (mm)	h	Kg	HF	DSI	DALI	
	T8	≤19	2x36	53	1196x296x105	1179x279	4,5	9964.236.52.A4	9964.236.52.84	9964.236.52.74
		≤19	2x58	49	1496x296x105	1479x279	5,4	9964.258.52.A4	9964.258.52.84	9964.258.52.74
		≤16	3x18	61	596x596x105	579x579	4,3	9964.318.52.A4	9964.318.52.84	9964.318.52.74
		≤16	4x18	59	596x596x105	579x579	4,3	9964.418.52.A4	9964.418.52.84	9964.418.52.74

* Lamp not included.
Example code for order: 9964.418.94.74 (DALI) + W5MD + 955000 (OPTIONS)

We reserve the right to make technical changes without prior notice.
Electrical/Optical data are subjected to a tolerance of +/-10%.

DOA - Opal acrylic diffuser

LAMP*	UGR	W	η(%)	AxBxC (mm)		Kg	HF	DSI	DALI
 T8	≤19	2x36	56	1196x296x105	1179x279	5,5	9964.236.20.A4	9964.236.20.84	9964.236.20.74
	≤22	2x58	43	1496x296x105	1479x279	5,4	9964.258.20.A4	9964.258.20.84	9964.258.20.74
	≤19	3x18	68	596x596x105	579x579	5,3	9964.318.20.A4	9964.318.20.84	9964.318.20.74
	≤19	4x18	63	596x596x105	579x579	5,3	9964.418.20.A4	9964.418.20.84	9964.418.20.74

OPTIONS

Code	Description
W3M	Connector 3-pole wieland GST 18i3 male.
W5M	Connector 5-pole wieland GST 18i5 male.
W5MD	Connector 5-pole wieland GST 18i5 DIM male.
--	Light and presence sensor.
CD	Double switch.
955000	Steel safety cable.
K3	Emergency unit 3 hours.
K1	Emergency unit 1 hour.
--	Lamps as optional.

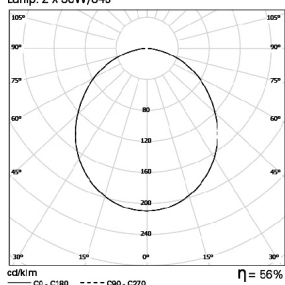
DETAILS



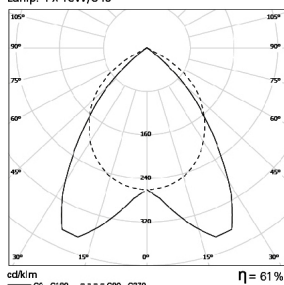
Side fixture connector on the luminaire

PHOTOMETRY

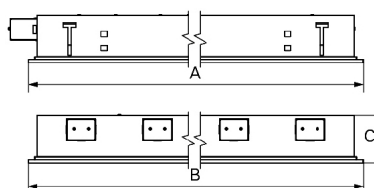
LAE 2x36W DOA
Lamp: 2 x 36W/840



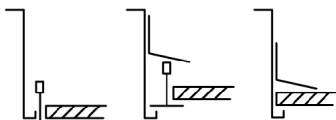
LAE 4x18W PB
Lamp: 4 x 18W/840



DIMENSIONS



FIXING SYSTEMS



Lay-in version for exposed T grids 15/24mm.

Pull-up version with brackets for exposed T grids 15/24mm.

Pull-up version with brackets for plasterboard ceilings.

TO SPECIFY:

Recessed T8 luminaire, available with polished/satin aluminium louvre or opal diffuser. Suitable for lay-in into exposed T grids or pull up version with brackets. Optional dimmable versions and 1 hour emergency available – as Roxo Lighting LAE.

We reserve the right to make technical changes without prior notice. Electrical/Optical data are subjected to a tolerance of +/-10%.