



Norms: EN 60598-1, EN 60598-2-1



230V/50Hz

PRODUCT DESCRIPTION

Areas of Application: Commercial and Business areas, Public buildings, Offices, Schools, Corridors.

Mounting: Surface/Suspended.

Light Distribution: Direct.

Control Gear: Electronic equipment, 220-240VAC-50/60Hz.

Materials: Body: Steel sheet.

Surface Finish: Powder coated in white matt (RAL9016).

EB - Polished parabolic "V" louvre

| LAMP* | W | η(%) | AxBxC (mm) | K1 | Kg | HF | DSI | DALI |
|-------|------|------|-------------|----|-----|----------------|----------------|----------------|
| T8 | 2x36 | 52 | 1268x275x85 | • | 4,5 | 9Q76.236.35.A4 | 9Q76.236.35.84 | 9Q76.236.35.74 |
| | 2x58 | 53 | 1568x275x85 | • | 5,6 | 9Q76.258.35.A4 | 9Q76.258.35.84 | 9Q76.258.35.74 |
| | 3x18 | 70 | 658x580x85 | • | 4,5 | 9Q76.318.35.A4 | 9Q76.318.35.84 | 9Q76.318.35.74 |
| | 4x18 | 60 | 658x580x85 | • | 4,5 | 9Q76.418.35.A4 | 9Q76.418.35.84 | 9Q76.418.35.74 |

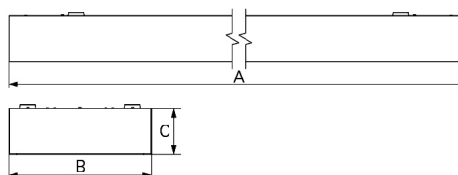
DOA - Opal acrylic diffuser

| LAMP* | W | η(%) | AxBxC (mm) | K1 | Kg | HF | DSI | DALI |
|-------|------|------|------------|----|-----|----------------|----------------|----------------|
| T8 | 3x18 | 64 | 658x580x85 | • | 4,8 | 9Q76.318.20.A4 | 9Q76.318.20.84 | 9Q76.318.20.74 |
| | 4x18 | 65 | 658x580x85 | • | 4,8 | 9Q76.418.20.A4 | 9Q76.418.20.84 | 9Q76.418.20.74 |

OPTIONS

| Code | Description |
|-------|------------------------------------|
| K1 | Emergency unit 1 hour. |
| P/LED | Electrification for LED lamp (T8). |
| -- | Lamps as optional. |

DIMENSIONS

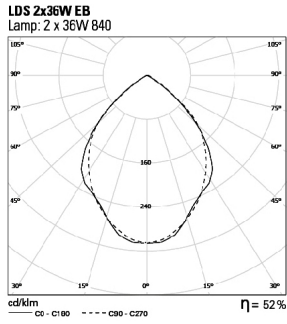


* Lamp not included.

Example code for order: 9Q76.236.35.74 (DALI)

We reserve the right to make technical changes without prior notice. Electrical/Optical data are subjected to a tolerance of +/-10%.

PHOTOMETRY



TO SPECIFY:

Surface T8 luminaire available with polished aluminium louvre or opal diffuser. Optional dimmable versions and 1 hour emergency available – as Indelague LDS.

We reserve the right to make technical changes without prior notice.
Electrical/Optical data are subjected to a tolerance of +/-10%.