

Norms: EN 60598-1, EN 60598-2-1



230V/50Hz



PRODUCT DESCRIPTION

Areas of Application: Commercial and Business areas, Public buildings, Offices, Schools, Corridors.

Mounting: Surface/Suspended.

Light Distribution: Direct.

Control Gear: Electronic equipment, 220-240VAC-50/60Hz.

Materials: Body: Steel sheet.

Surface Finish: Powder coated in white matt (RAL9016).

EB - Polished parabolic "V" louvre

LAMP*	W	η(%)	AxBxC (mm)	K1	Kg	HF	DSI	DALI
T8	2x36	52	1268x275x85	•	4,5	9Q76.236.35.A4	9Q76.236.35.84	9Q76.236.35.74
	2x58	53	1568x275x85	•	5,6	9Q76.258.35.A4	9Q76.258.35.84	9Q76.258.35.74
	3x18	70	658x580x85	•	4,5	9Q76.318.35.A4	9Q76.318.35.84	9Q76.318.35.74
	4x18	60	658x580x85	•	4,5	9Q76.418.35.A4	9Q76.418.35.84	9Q76.418.35.74

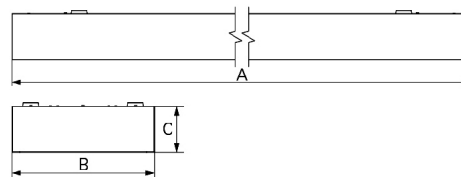
DOA - Opal acrylic diffuser

LAMP*	W	η(%)	AxBxC (mm)	K1	Kg	HF	DSI	DALI
T8	3x18	64	658x580x85	•	4,8	9Q76.318.20.A4	9Q76.318.20.84	9Q76.318.20.74
	4x18	65	658x580x85	•	4,8	9Q76.418.20.A4	9Q76.418.20.84	9Q76.418.20.74

OPTIONS

Code	Description
K1	Emergency unit 1 hour.
P/LED	Electrification for LED lamp (T8).
--	Lamps as optional.

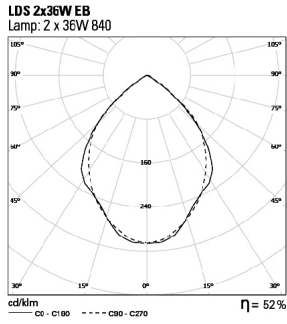
DIMENSIONS



* Lamp not included.
Example code for order: 9Q76.236.35.74 (DALI)

We reserve the right to make technical changes without prior notice.
Electrical/Optical data are subjected to a tolerance of +/-10%.

PHOTOMETRY



TO SPECIFY:

Surface T8 luminaire available with polished aluminium louvre or opal diffuser. Optional dimmable versions and 1 hour emergency available – as Roxo Lighting LDS.

We reserve the right to make technical changes without prior notice.
Electrical/Optical data are subjected to a tolerance of +/-10%.