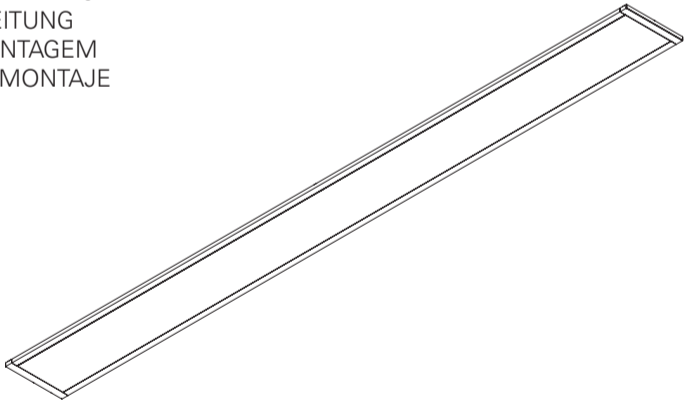



LNE Mini LED


EN INSTALLATION INSTRUCTIONS  
FR INSTRUCTIONS D'INTALLATION  
DE INSTALLATIONSANLEITUNG  
PT INSTRUÇÕES DE MONTAGEM  
ES INSTRUCCIONES DE MONTAJE





LNE Mini LED


CE       

 **EN Warning:** The light source contained in the luminaire should be replaced only by the manufacturer. Do not use this equipment in areas containing chemical agents: acids, solvents, paints, silicones, coatings, etc.  
**FR Advertissement:** La source de lumière contenue dans la luminaire doit être remplacée par le fabricant. En cas d'anomalie détectée, contactez le fabricant. Ne pas utiliser l'équipement dans les zones qui contiennent des agents chimiques: acides, solvants, peintures, silicones, vernis, etc.  
**DE Warnung:** Die in der Leuchte enthalten Lichtquelle sollte nur vom Hersteller ersetzt werden. Verwenden Sie dieses Gerät nicht in Bereichen mit chemischen Mitteln: Säuren, Lösungsmittel, Farben, Silikone, Beschichtungen etc.  
**PT Atenção:** A fonte de luz contida na luminária deve ser substituída unicamente pelo fabricante. Qualquer anomalia detectada contactar o fabricante. Não utilizar o equipamento em zonas que contenham agentes químicos: ácidos, solventes, tintas, silicones, vernizes, etc.  
**ES Atención:** La fuente de luz contenida en la luminaria debe ser sustituida únicamente por el fabricante. Cualquier anomalia detectada contactar con el fabricante. No utilizar la luminaria en zonas que contengan agentes químicos: ácidos, disolventes, pinturas, siliconas, barnices, etc."

 **EN** Caution, risk of electric shock.  
**FR** Attention, risque de choc électrique.  
**DE** Achtung, Gefahr eines Stromschlags.  
**PT** Cuidado, risco de choque elétrico.  
**ES** Precaución, riesgo de descarga eléctrica.

 **EN** Luminaire can not be covered with thermal insulation.  
**FR** Luminaires ne pouvant pas être recouverts de matériaux isolant thermique.  
**DE** Leuchte die nicht mit thermisch isolierenden Material bedeckt sein kann.  
**PT** Luminária que não pode ser coberta com material isolante térmico.  
**ES** La luminaria no puede ser cubierta con material aislante térmico.

 **EN** If glass or diffuser break or crack, please replace it.  
**FR** En cas de casse ou fissurement, remplacez le verre ou diffuseur.  
**DE** Bei Bruch oder Riss, Glas oder Diffuser ersetzen.  
**PT** Em caso de quebra ou fissura, substituir o vidro ou difusor.  
**ES** En caso de rotura o fisura, sustituir el vidrio o difusor.

 **EN** Read carefully the general terms and conditions of use and environmental concern with recycling attached. | **FR** Lire attentivement les conditions générales d'utilisations et de préoccupation environnementales avec les recyclage ci-joint. | **DE** Bitte lesen Sie de Allgemeinen Geschäftsbedingungen und Umweltbewusstsein über Recycling angeschlossen. | **PT** Ler atentamente as condições gerais uso e preocupação ambiental com a reciclagem em anexo. | **ES** Lea atentamente las condiciones generales de uso y preocupación ambiental con el reciclaje adjuntos.

**EN** We reserve the right to make changes on technical specifications, design and installation leaflet without prior notice. | **FR** Sous réserve de modifications au niveau de la conception, des spécifications techniques et de la notice. | **DE** Änderungen von Entwurf, technischen Daten und Bedienungsanleitungen bleiben vorbehalten. | **PT** O fabricante reserva-se no direito de realizar modificações no desenho, especificações técnicas e folheto, sem aviso prévio. | **ES** El fabricante se reserva el derecho de realizar modificaciones en el diseño, las especificaciones técnicas y el folleto.

LNE Mini LED

EN Accessories

FR Accessoires

DE Zubehör

PT Acessórios

ES Accesorios

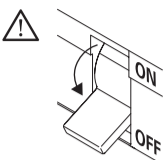
(x1)

(x4)

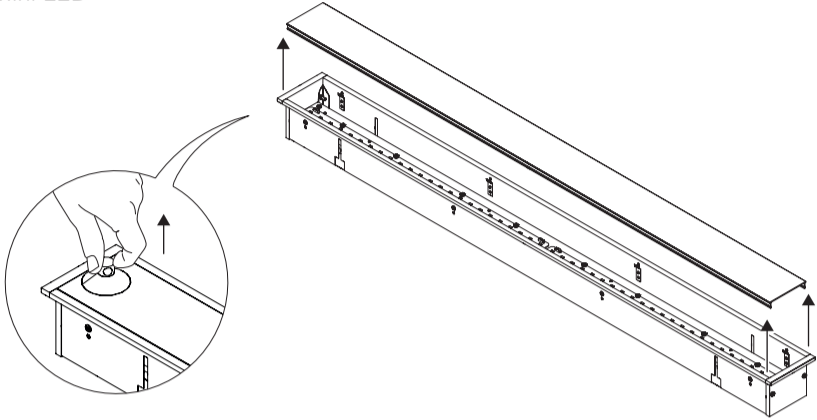
(x4)

(mm)  
874x106x78  
1154x106x78  
1439x106x78

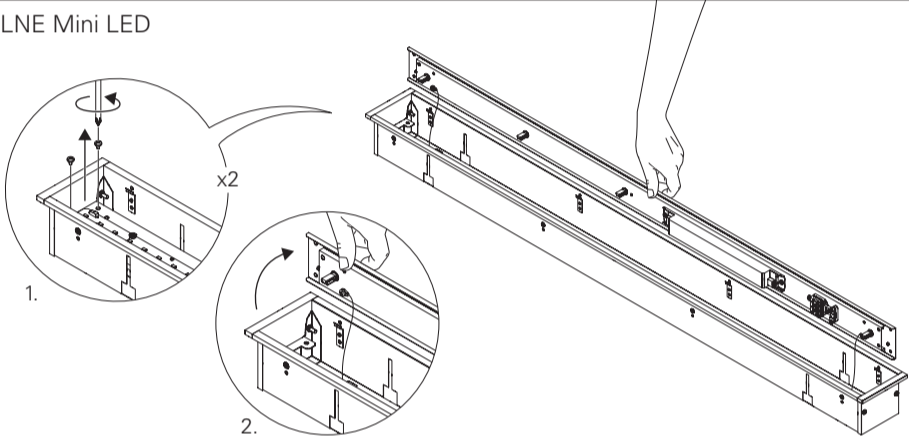
857x93  
1137x93  
1422x93



1 - LNE Mini LED

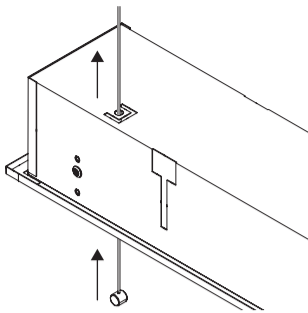


2 - LNE Mini LED

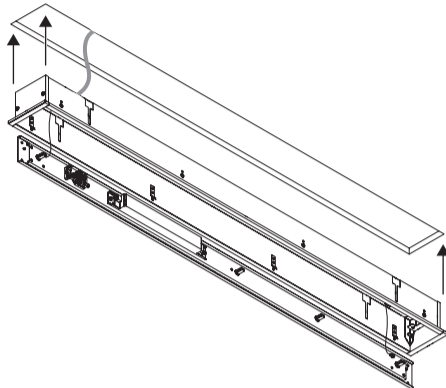


3 - LNE Mini LED

SAFETY CABLE OPTION  
OPTION FILIN D'ACIER  
OPTIONEN STAHL SICHERHEITSKABEL  
OPÇÃO CABO DE SEGURANÇA  
OPCIÓN CABLE DE SEGURIDAD

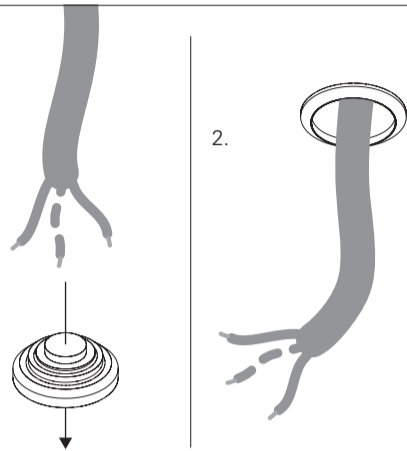


4 - LNE Mini LED

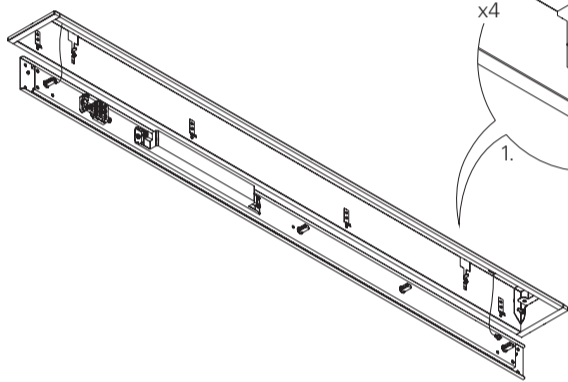


1.

2.



5 - LNE Mini LED



x4

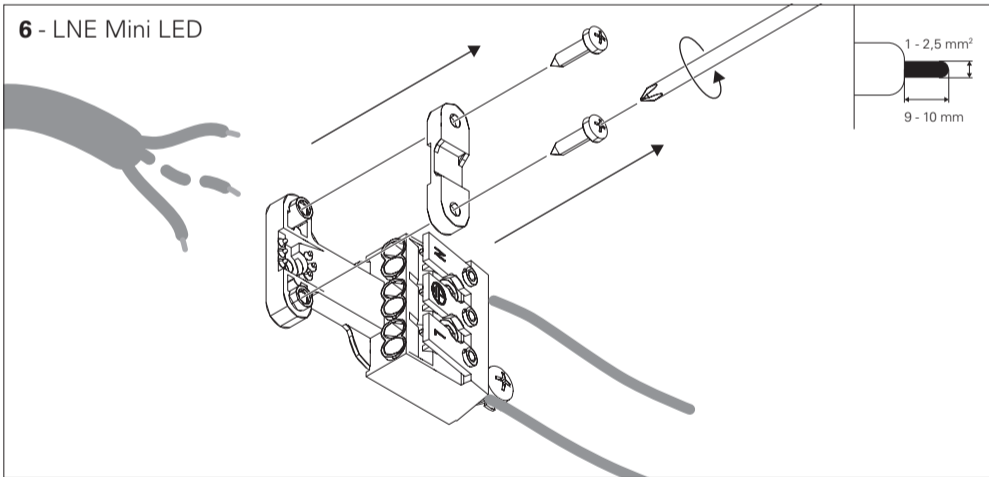
1.

2.

x4

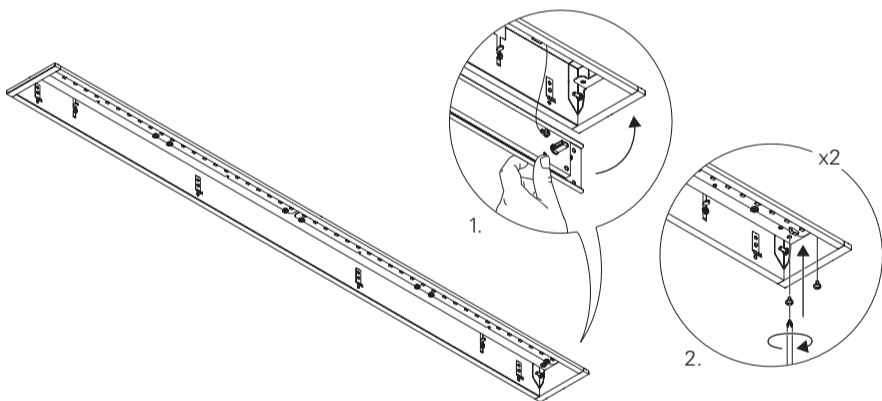
3.

6 - LNE Mini LED



1 - 2,5 mm<sup>2</sup>  
9 - 10 mm

9 - LNE Mini LED



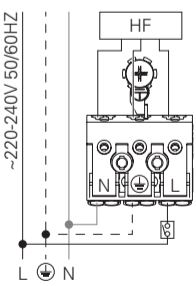
1.

2.

x2

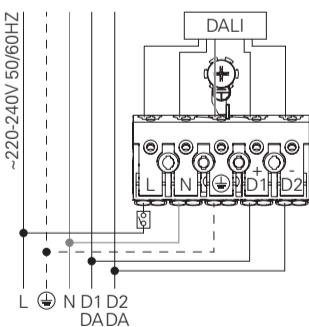
7 - LNE Mini LED HF

STANDARD POWER SUPPLY  
CÂBLAGE STRANDARD  
STANDARD VERDRAHTUNG  
ALIMENTAÇÃO ELÉCTRICA STANDARD  
ELECTRIFICACIÓN ESTÁNDAR



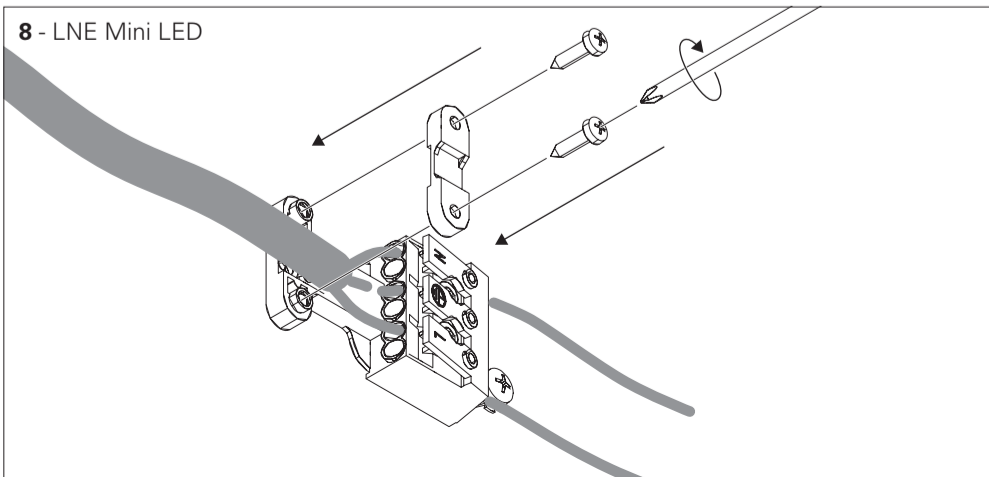
DALI

DIMMABLE POWER SUPPLY  
CÂBLAGE AVEC GRADATION  
DIMMBARE VERDRAHTUNG  
ALIMENTAÇÃO ELÉCTRICA COM REGULAÇÃO  
ELECTRIFICACIÓN CON REGULACIÓN

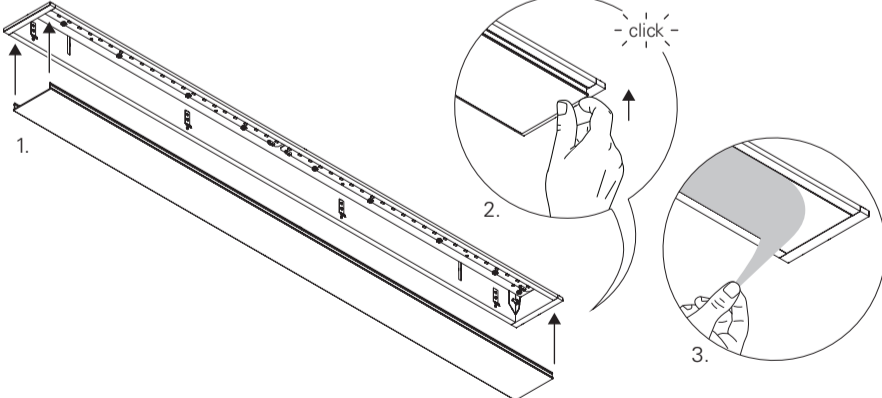


BLUE - N (NEUTRAL)  
GREEN AND YELLOW - (EARTH)  
BROWN - L (LIVE)  
GREY - D1+  
BLACK - D2-  
BLEU - N (NEUTRE)  
VERT ET JAUNE - (TERRE)  
MARRON - L (PHASE)  
GRIS - D1+  
NOIR - D2-  
BLAU - N (NEUTRAL)  
GRÜN UND GELB - (ERDE)  
BRAUN - L (PHASE)  
GRAU - D1+  
SCHWARZ - D2-  
AZUL - N (NEUTRO)  
VERDE E AMARELO - (TERRA)  
CASTANHO - L (FASE)  
CINZA - D1+  
PRETO - D2-  
AZUL - N (NEUTRAL)  
VERDE Y AMARILLO - (TIERRA)  
MARRÓN - L (FASE)  
GRIS - D1+  
NEGRO - D2-

8 - LNE Mini LED



10 - LNE Mini LED



1.

2.

3.

- click -