

Norms: EN 60598-1, EN 60598-2-25



### PRODUCT DESCRIPTION

**Areas of Application:** Hospitals, Restaurant and Hotel services, Cleanrooms.

**Mounting:** Ceiling recessed.

**Light Distribution:** Direct.



**Control Gear:** Electronic equipment, 220-240VAC-50/60Hz.

**Materials:** Body: Steel sheet.  
Frame: Extruded aluminium.



**Surface Finish:** Powder coated in white matt (RAL9016).

**Fixing system:** Pull-up version with brackets.

#### DAM - Microprismatic diffuser

	LAMP*	UGR	W	Lm/W	η(%)	AxBxC (mm)	Kg	 HF	DSI	DALI
	T5	≤19	3x14	62	81	597x597x65	4,1	9A4C.314.6V.A4	9A4C.314.6V.84	9A4C.314.6V.74
		≤22	3x24	60	86	597x597x65	4,1	9A4C.324.6V.A4	9A4C.324.6V.84	9A4C.324.6V.74
		≤19	4x14	63	81	597x597x65	4,1	9A4C.414.6V.A4	9A4C.414.6V.84	9A4C.414.6V.74
		≤22	4x24	63	88	597x597x65	4,1	9A4C.424.6V.A4	9A4C.424.6V.84	9A4C.424.6V.74

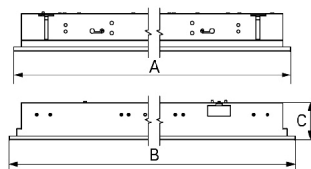
#### DOP - Opal polycarbonate diffuser

	LAMP*	UGR	W	Lm/W	η(%)	AxBxC (mm)	Kg	 HF	DSI	DALI
	T5	≤19	3x14	48	62	597x597x65	4,1	9A4C.314.21.A4	9A4C.314.21.84	9A4C.314.21.74
		≤22	3x24	46	66	597x597x65	4,1	9A4C.324.21.A4	9A4C.324.21.84	9A4C.324.21.74
		≤22	4x14	48	63	597x597x65	4,1	9A4C.414.21.A4	9A4C.414.21.84	9A4C.414.21.74
		≤22	4x24	50	70	597x597x65	4,1	9A4C.424.21.A4	9A4C.424.21.84	9A4C.424.21.74

#### OPTIONS

Code	Description
K3	Emergency unit 3 hours.
K1	Emergency unit 1 hour.
955000	Steel safety cable.
--	Lamps as optional.

#### DIMENSIONS



\* Lamp not included.  
Example code for order: 9A4C.424.6V.74 (DALI)

We reserve the right to make technical changes without prior notice.  
Electrical/Optical data are subjected to a tolerance of +/-10%.

## DETAILS



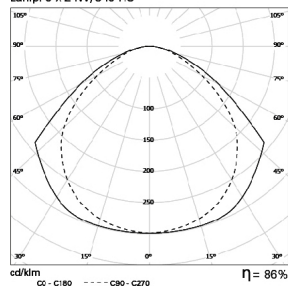
Security cable



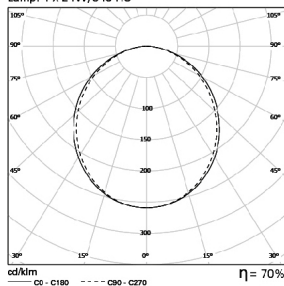
IP20 brackets

## PHOTOMETRY

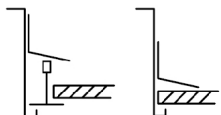
**LNE IP 3x24W DAM**  
Lamp: 3 x 24W/840 HO



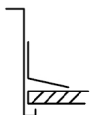
**LNE IP 4x24W DOP**  
Lamp: 4 x 24W/840 HO



## FIXING SYSTEMS



Pull-up version with brackets for exposed T grids 15/24mm.



Pull-up version with brackets for plasterboard ceilings.

### TO SPECIFY:

IP20/54 recessed modular T5(G5) clean room luminaire. IP54 aluminium frame from below ceiling available with microprismatic or opal diffuser. Equipped with HF control gear. Dimmable version and emergency also available – as Indelague LNE IP.

We reserve the right to make technical changes without prior notice. Electrical/Optical data are subjected to a tolerance of +/-10%.