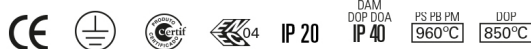


Norms: EN 60598-1, EN 60598-2-1



DAM DOP DDA
650°C 230V/50Hz

PRODUCT DESCRIPTION

Areas of Application: Commercial and Business areas, Public buildings, Offices, Schools, Corridors.

Mounting: Surface/Suspended.


Light Distribution: Direct.

Control Gear: Electronic equipment, 220-240VAC-50/60Hz.


Materials: Body: Steel sheet.

Surface Finish: Powder coated in white matt (RAL9016).

PS - P-SILVER Double parabolic louvre

| LAMP* | UGR | W | Lm/W | η(%) | AxBxC (mm) | K1 | K3 | Kg | HF | DSI | DALI |
|--|------|------|------|------|-------------|----|----|-----|----------------|----------------|----------------|
|  | ≤19 | 1x28 | 76 | 89 | 1197x121x58 | - | - | 2,8 | 9R92.128.3T.A4 | 9R92.128.3T.84 | 9R92.128.3T.74 |
| | ≤19 | 1x35 | 82 | 94 | 1497x121x58 | - | - | 3,9 | 9R92.135.3T.A4 | 9R92.135.3T.84 | 9R92.135.3T.74 |
| | ≤19 | 1x49 | 73 | 88 | 1497x121x58 | - | - | 3,9 | 9R92.149.3T.A4 | 9R92.149.3T.84 | 9R92.149.3T.74 |
| | ≤19 | 1x54 | 67 | 86 | 1197x121x58 | - | - | 2,8 | 9R92.154.3T.A4 | 9R92.154.3T.84 | 9R92.154.3T.74 |
| | ≤<22 | 1x80 | 68 | 94 | 1497x121x58 | - | - | 3,9 | 9R92.180.3T.A4 | 9R92.180.3T.84 | 9R92.180.3T.74 |
| | ≤19 | 2x28 | 78 | 90 | 1197x297x58 | • | • | 4,2 | 9R92.228.3T.A4 | 9R92.228.3T.84 | 9R92.228.3T.74 |
| | ≤19 | 2x35 | 78 | 90 | 1497x297x58 | • | • | 4,8 | 9R92.235.3T.A4 | 9R92.235.3T.84 | 9R92.235.3T.74 |
| | ≤19 | 2x49 | 72 | 89 | 1497x297x58 | • | • | 4,8 | 9R92.249.3T.A4 | 9R92.249.3T.84 | 9R92.249.3T.74 |
| | ≤19 | 2x54 | 71 | 90 | 1197x297x58 | • | • | 4,2 | 9R92.254.3T.A4 | 9R92.254.3T.84 | 9R92.254.3T.74 |
| | ≤19 | 2x80 | 64 | 89 | 1497x297x58 | • | • | 4,8 | 9R92.280.3T.A4 | 9R92.280.3T.84 | 9R92.280.3T.74 |

PB - Polished double parabolic louvre


| LAMP* | UGR | W | Lm/W | η(%) | AxBxC (mm) | K1 | K3 | Kg | HF | DSI | DALI |
|--|-----|------|------|------|-------------|----|----|-----|----------------|----------------|----------------|
|  | ≤19 | 1x28 | 67 | 78 | 1197x121x58 | - | - | 2,8 | 9R92.128.81.A4 | 9R92.128.81.84 | 9R92.128.81.74 |
| | ≤19 | 1x35 | 83 | 83 | 1497x121x58 | - | - | 3,9 | 9R92.135.81.A4 | 9R92.135.81.84 | 9R92.135.81.74 |
| | ≤19 | 1x49 | 63 | 77 | 1497x121x58 | - | - | 3,9 | 9R92.149.81.A4 | 9R92.149.81.84 | 9R92.149.81.74 |
| | ≤19 | 1x54 | 60 | 77 | 1197x121x58 | - | - | 2,8 | 9R92.154.81.A4 | 9R92.154.81.84 | 9R92.154.81.74 |
| | ≤19 | 1x80 | 61 | 84 | 1497x121x58 | - | - | 3,9 | 9R92.180.81.A4 | 9R92.180.81.84 | 9R92.180.81.74 |
| | ≤16 | 2x28 | 68 | 79 | 1197x297x58 | • | • | 4,2 | 9R92.228.81.A4 | 9R92.228.81.84 | 9R92.228.81.74 |
| | ≤16 | 2x35 | 70 | 80 | 1497x297x58 | • | • | 4,8 | 9R92.235.81.A4 | 9R92.235.81.84 | 9R92.235.81.74 |
| | ≤19 | 2x49 | 64 | 79 | 1497x297x58 | • | • | 4,8 | 9R92.249.81.A4 | 9R92.249.81.84 | 9R92.249.81.74 |
| | ≤19 | 2x54 | 62 | 79 | 1197x297x58 | • | • | 4,2 | 9R92.254.81.A4 | 9R92.254.81.84 | 9R92.254.81.74 |
| | ≤19 | 2x80 | 55 | 77 | 1497x297x58 | • | • | 4,8 | 9R92.280.81.A4 | 9R92.280.81.84 | 9R92.280.81.74 |

* Lamp not included.


Example code for order: 9R92.228.3T.74 (DALI) + BM (OPTIONS)

We reserve the right to make technical changes without prior notice. Electrical/Optical data are subjected to a tolerance of +/-10%.


PM - Satin double parabolic louvre

|  | LAMP* | UGR | W | Lm/W | η(%) | AxBxC (mm) | K1 | K3 | Kg | HF | DSI | DALI |
|--|-------|-----|------|------|------|-------------|----|----|-----|----------------|----------------|----------------|
| | T5 | ≤16 | 1x28 | 56 | 66 | 1197x121x58 | - | - | 2,8 | 9R92.128.95.A4 | 9R92.128.95.84 | 9R92.128.95.74 |
| | | ≤16 | 1x35 | 61 | 70 | 1497x121x58 | - | - | 3,9 | 9R92.135.95.A4 | 9R92.135.95.84 | 9R92.135.95.74 |
| | | ≤19 | 1x49 | 55 | 66 | 1497x121x58 | - | - | 3,9 | 9R92.149.95.A4 | 9R92.149.95.84 | 9R92.149.95.74 |
| | | ≤19 | 1x54 | 49 | 62 | 1197x121x58 | - | - | 2,8 | 9R92.154.95.A4 | 9R92.154.95.84 | 9R92.154.95.74 |
| | | ≤19 | 1x80 | 51 | 71 | 1497x121x58 | - | - | 3,9 | 9R92.180.95.A4 | 9R92.180.95.84 | 9R92.180.95.74 |
| | | ≤16 | 2x28 | 57 | 66 | 1197x297x58 | • | • | 4,2 | 9R92.228.95.A4 | 9R92.228.95.84 | 9R92.228.95.74 |
| | | ≤16 | 2x35 | 59 | 68 | 1497x297x58 | • | • | 4,8 | 9R92.235.95.A4 | 9R92.235.95.84 | 9R92.235.95.74 |
| | | ≤16 | 2x49 | 55 | 67 | 1497x297x58 | • | • | 4,8 | 9R92.249.95.A4 | 9R92.249.95.84 | 9R92.249.95.74 |
| | | ≤19 | 2x54 | 52 | 66 | 1197x297x58 | • | • | 4,2 | 9R92.254.95.A4 | 9R92.254.95.84 | 9R92.254.95.74 |
| | | ≤19 | 2x80 | 48 | 67 | 1497x297x58 | • | • | 4,8 | 9R92.280.95.A4 | 9R92.280.95.84 | 9R92.280.95.74 |


DAM - Microprismatic diffuser

|  | LAMP* | UGR | W | Lm/W | η(%) | AxBxC (mm) | K1 | K3 | Kg | HF | DSI | DALI |
|--|-------|-----|------|------|------|-------------|----|----|-----|----------------|----------------|----------------|
| | T5 | ≤19 | 1x28 | 57 | 67 | 1197x121x58 | - | - | 3,3 | 9R92.128.6V.A4 | 9R92.128.6V.84 | 9R92.128.6V.74 |
| | | ≤22 | 1x35 | 61 | 70 | 1497x121x58 | - | - | 4,0 | 9R92.135.6V.A4 | 9R92.135.6V.84 | 9R92.135.6V.74 |
| | | ≤19 | 1x49 | 52 | 63 | 1497x121x58 | - | - | 4,0 | 9R92.149.6V.A4 | 9R92.149.6V.84 | 9R92.149.6V.74 |
| | | ≤19 | 1x54 | 51 | 65 | 1197x121x58 | - | - | 3,3 | 9R92.154.6V.A4 | 9R92.154.6V.84 | 9R92.154.6V.74 |
| | | ≤22 | 1x80 | 52 | 72 | 1497x121x58 | - | - | 4,0 | 9R92.180.6V.A4 | 9R92.180.6V.84 | 9R92.180.6V.74 |
| | | ≤19 | 2x28 | 67 | 78 | 1197x297x58 | • | • | 4,9 | 9R92.228.6V.A4 | 9R92.228.6V.84 | 9R92.228.6V.74 |
| | | ≤22 | 2x35 | 70 | 80 | 1497x297x58 | • | • | 5,9 | 9R92.235.6V.A4 | 9R92.235.6V.84 | 9R92.235.6V.74 |
| | | ≤19 | 2x49 | 64 | 79 | 1497x297x58 | • | • | 5,9 | 9R92.249.6V.A4 | 9R92.249.6V.84 | 9R92.249.6V.74 |
| | | ≤19 | 2x54 | 59 | 75 | 1197x297x58 | • | • | 4,9 | 9R92.254.6V.A4 | 9R92.254.6V.84 | 9R92.254.6V.74 |
| | | ≤22 | 2x80 | 59 | 82 | 1497x297x58 | • | • | 5,9 | 9R92.280.6V.A4 | 9R92.280.6V.84 | 9R92.280.6V.74 |

DOP - Opal polycarbonate diffuser

|  | LAMP* | UGR | W | Lm/W | η(%) | AxBxC (mm) | K1 | K3 | Kg | HF | DSI | DALI |
|--|-------|-----|------|------|------|-------------|----|----|-----|----------------|----------------|----------------|
| | T5 | ≤22 | 1x28 | 45 | 53 | 1197x121x58 | - | - | 3,3 | 9R92.128.21.A4 | 9R92.128.21.84 | 9R92.128.21.74 |
| | | ≤22 | 1x35 | 51 | 58 | 1497x121x58 | - | - | 4,0 | 9R92.135.21.A4 | 9R92.135.21.84 | 9R92.135.21.74 |
| | | ≤22 | 1x49 | 43 | 52 | 1497x121x58 | - | - | 4,0 | 9R92.149.21.A4 | 9R92.149.21.84 | 9R92.149.21.74 |
| | | ≤25 | 1x54 | 41 | 52 | 1197x121x58 | - | - | 3,3 | 9R92.154.21.A4 | 9R92.154.21.84 | 9R92.154.21.74 |
| | | ≤25 | 1x80 | 43 | 60 | 1497x121x58 | - | - | 4,0 | 9R92.180.21.A4 | 9R92.180.21.84 | 9R92.180.21.74 |
| | | ≤22 | 2x28 | 56 | 65 | 1197x297x58 | • | • | 4,9 | 9R92.228.21.A4 | 9R92.228.21.84 | 9R92.228.21.74 |
| | | ≤22 | 2x35 | 57 | 66 | 1497x297x58 | • | • | 5,9 | 9R92.235.21.A4 | 9R92.235.21.84 | 9R92.235.21.74 |
| | | ≤22 | 2x49 | 52 | 64 | 1497x297x58 | • | • | 5,9 | 9R92.249.21.A4 | 9R92.249.21.84 | 9R92.249.21.74 |
| | | ≤22 | 2x54 | 47 | 60 | 1197x297x58 | • | • | 4,9 | 9R92.254.21.A4 | 9R92.254.21.84 | 9R92.254.21.74 |
| | | ≤25 | 2x80 | 49 | 68 | 1497x297x58 | • | • | 5,9 | 9R92.280.21.A4 | 9R92.280.21.84 | 9R92.280.21.74 |

DOA - Opal acrylic diffuser

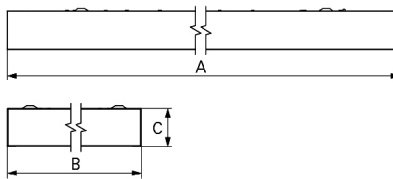
|  | LAMP* | UGR | W | Lm/W | η(%) | AxBxC (mm) | K1 | K3 | Kg | HF | DSI | DALI |
|--|-------|-----|------|------|------|-------------|----|----|-----|----------------|----------------|----------------|
| | T5 | ≤22 | 1x28 | 56 | 65 | 1197x121x58 | - | - | 3,3 | 9R92.128.20.A4 | 9R92.128.20.84 | 9R92.128.20.74 |
| | | ≤22 | 1x35 | 60 | 69 | 1497x121x58 | - | - | 4,0 | 9R92.135.20.A4 | 9R92.135.20.84 | 9R92.135.20.74 |
| | | ≤22 | 1x49 | 51 | 62 | 1497x121x58 | - | - | 4,0 | 9R92.149.20.A4 | 9R92.149.20.84 | 9R92.149.20.74 |
| | | ≤25 | 1x54 | 49 | 63 | 1197x121x58 | - | - | 3,3 | 9R92.154.20.A4 | 9R92.154.20.84 | 9R92.154.20.74 |
| | | ≤25 | 1x80 | 51 | 71 | 1497x121x58 | - | - | 4,0 | 9R92.180.20.A4 | 9R92.180.20.84 | 9R92.180.20.74 |
| | | ≤22 | 2x28 | 66 | 76 | 1197x297x58 | • | • | 4,9 | 9R92.228.20.A4 | 9R92.228.20.84 | 9R92.228.20.74 |
| | | ≤22 | 2x35 | 66 | 76 | 1497x297x58 | • | • | 5,9 | 9R92.235.20.A4 | 9R92.235.20.84 | 9R92.235.20.74 |
| | | ≤25 | 2x49 | 62 | 76 | 1497x297x58 | • | • | 5,9 | 9R92.249.20.A4 | 9R92.249.20.84 | 9R92.249.20.74 |
| | | ≤25 | 2x54 | 57 | 72 | 1197x297x58 | • | • | 4,9 | 9R92.254.20.A4 | 9R92.254.20.84 | 9R92.254.20.74 |
| | | ≤25 | 2x80 | 57 | 80 | 1497x297x58 | • | • | 5,9 | 9R92.280.20.A4 | 9R92.280.20.84 | 9R92.280.20.74 |

We reserve the right to make technical changes without prior notice.
Electrical/Optical data are subjected to a tolerance of +/-10%.

OPTIONS

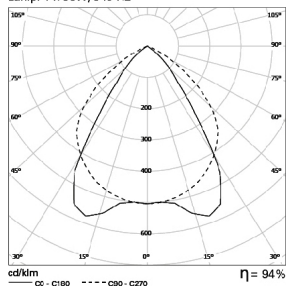
| Code | Description |
|------|----------------------------|
| -- | Light and presence sensor. |
| BM | Microperforated panel. |
| K3 | Emergency unit 3 hours. |
| K1 | Emergency unit 1 hour. |
| -- | Lamps as optional. |

DIMENSIONS

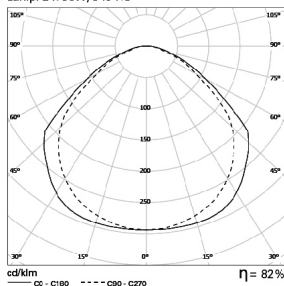


PHOTOMETRY

LNS 1x35W P-SILVER
Lamp: 1 x 35W/840 HE



LNS 2x80W DAM
Lamp: 2 x 80W/840 H-O



TO SPECIFY:

Surface T5(G5) luminaire, individually mounted. Single or twin 28/35/49/54/80W fluorescent lamp for P-Silver/polished/satin high output aluminium louvre or microprismatic/opal polycarbonate diffuser. Optional light/presence sensor, dimmable versions and 1 or 3 hours emergency available – as Roxo Lighting LNS.