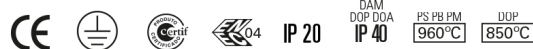


Normas: EN 60598-1, EN 60598-2-1



DAM DOP DOA  
650°C 230V/50Hz

**DESCRIPCIÓN DEL PRODUCTO**

**reas de Aplicación:** reas comerciales, Oficinas, Edificios públicos, escuelas, pasillos.

**Instalación:** Superficie/Suspendida.

**Distribución de la luz:** Directo.

**Equipo:** Reactancia electrónica, 220-240VAC-50/60Hz.

**Materiales:** Cuerpo: Chapa de acero.

**Acabado:** Pintado en epoxi-poliéster blanco mate (RAL9016).

PS - Óptica doble parabólica en aluminio P-SILVER

	L	MP*	UGR	W	Lm/W	η(%)	AxBxC (mm)	K1	K3	Kg	HF	DSI	DALI
	T5		≤19	1x28	76	89	1197x121x58	-	-	2,8	9R92.128.3T.A4	9R92.128.3T.84	9R92.128.3T.74
			≤19	1x35	82	94	1497x121x58	-	-	3,9	9R92.135.3T.A4	9R92.135.3T.84	9R92.135.3T.74
			≤19	1x49	73	88	1497x121x58	-	-	3,9	9R92.149.3T.A4	9R92.149.3T.84	9R92.149.3T.74
			≤19	1x54	67	86	1197x121x58	-	-	2,8	9R92.154.3T.A4	9R92.154.3T.84	9R92.154.3T.74
			≤<22	1x80	68	94	1497x121x58	-	-	3,9	9R92.180.3T.A4	9R92.180.3T.84	9R92.180.3T.74
			≤19	2x28	78	90	1197x297x58	•	•	4,2	9R92.228.3T.A4	9R92.228.3T.84	9R92.228.3T.74
			≤19	2x35	78	90	1497x297x58	•	•	4,8	9R92.235.3T.A4	9R92.235.3T.84	9R92.235.3T.74
			≤19	2x49	72	89	1497x297x58	•	•	4,8	9R92.249.3T.A4	9R92.249.3T.84	9R92.249.3T.74
			≤19	2x54	71	90	1197x297x58	•	•	4,2	9R92.254.3T.A4	9R92.254.3T.84	9R92.254.3T.74
			≤19	2x80	64	89	1497x297x58	•	•	4,8	9R92.280.3T.A4	9R92.280.3T.84	9R92.280.3T.74

PB - Óptica doble parabólica en aluminio brillante


	L	MP*	UGR	W	Lm/W	η(%)	AxBxC (mm)	K1	K3	Kg	HF	DSI	DALI
	T5		≤19	1x28	67	78	1197x121x58	-	-	2,8	9R92.128.81.A4	9R92.128.81.84	9R92.128.81.74
			≤19	1x35	83	83	1497x121x58	-	-	3,9	9R92.135.81.A4	9R92.135.81.84	9R92.135.81.74
			≤19	1x49	63	77	1497x121x58	-	-	3,9	9R92.149.81.A4	9R92.149.81.84	9R92.149.81.74
			≤19	1x54	60	77	1197x121x58	-	-	2,8	9R92.154.81.A4	9R92.154.81.84	9R92.154.81.74
			≤19	1x80	61	84	1497x121x58	-	-	3,9	9R92.180.81.A4	9R92.180.81.84	9R92.180.81.74
			≤16	2x28	68	79	1197x297x58	•	•	4,2	9R92.228.81.A4	9R92.228.81.84	9R92.228.81.74
			≤16	2x35	70	80	1497x297x58	•	•	4,8	9R92.235.81.A4	9R92.235.81.84	9R92.235.81.74
			≤19	2x49	64	79	1497x297x58	•	•	4,8	9R92.249.81.A4	9R92.249.81.84	9R92.249.81.74
			≤19	2x54	62	79	1197x297x58	•	•	4,2	9R92.254.81.A4	9R92.254.81.84	9R92.254.81.74
			≤19	2x80	55	77	1497x297x58	•	•	4,8	9R92.280.81.A4	9R92.280.81.84	9R92.280.81.74

\* Lámpara no incluida.


Ejemplo código de pedido: 9R92.228.3T.74 (DALI) + BM (OPCIONES)

La empresa se reserva el derecho de hacer cambios técnicos sin previo aviso. Los datos eléctricos/ópticos están sujetos a una tolerancia de +/-10%.


PM - Óptica doble parabólica en aluminio mate

	L	MP*	UGR	W	Lm/W	η(%)	AxBxC (mm)	K1	K3	Kg	HF	DSI	DALI
T5	≤16	1x28	56	66	1197x121x58	-	-	2,8	9R92.128.95.A4	9R92.128.95.84	9R92.128.95.74		
	≤16	1x35	61	70	1497x121x58	-	-	3,9	9R92.135.95.A4	9R92.135.95.84	9R92.135.95.74		
	≤19	1x49	55	66	1497x121x58	-	-	3,9	9R92.149.95.A4	9R92.149.95.84	9R92.149.95.74		
	≤19	1x54	49	62	1197x121x58	-	-	2,8	9R92.154.95.A4	9R92.154.95.84	9R92.154.95.74		
	≤19	1x80	51	71	1497x121x58	-	-	3,9	9R92.180.95.A4	9R92.180.95.84	9R92.180.95.74		
	≤16	2x28	57	66	1197x297x58	•	•	4,2	9R92.228.95.A4	9R92.228.95.84	9R92.228.95.74		
	≤16	2x35	59	68	1497x297x58	•	•	4,8	9R92.235.95.A4	9R92.235.95.84	9R92.235.95.74		
	≤16	2x49	55	67	1497x297x58	•	•	4,8	9R92.249.95.A4	9R92.249.95.84	9R92.249.95.74		
	≤19	2x54	52	66	1197x297x58	•	•	4,2	9R92.254.95.A4	9R92.254.95.84	9R92.254.95.74		
	≤19	2x80	48	67	1497x297x58	•	•	4,8	9R92.280.95.A4	9R92.280.95.84	9R92.280.95.74		


DAM - Difusor microprismático

	L	MP*	UGR	W	Lm/W	η(%)	AxBxC (mm)	K1	K3	Kg	HF	DSI	DALI
T5	≤19	1x28	57	67	1197x121x58	-	-	3,3	9R92.128.6V.A4	9R92.128.6V.84	9R92.128.6V.74		
	≤22	1x35	61	70	1497x121x58	-	-	4,0	9R92.135.6V.A4	9R92.135.6V.84	9R92.135.6V.74		
	≤19	1x49	52	63	1497x121x58	-	-	4,0	9R92.149.6V.A4	9R92.149.6V.84	9R92.149.6V.74		
	≤19	1x54	51	65	1197x121x58	-	-	3,3	9R92.154.6V.A4	9R92.154.6V.84	9R92.154.6V.74		
	≤22	1x80	52	72	1497x121x58	-	-	4,0	9R92.180.6V.A4	9R92.180.6V.84	9R92.180.6V.74		
	≤19	2x28	67	78	1197x297x58	•	•	4,9	9R92.228.6V.A4	9R92.228.6V.84	9R92.228.6V.74		
	≤22	2x35	70	80	1497x297x58	•	•	5,9	9R92.235.6V.A4	9R92.235.6V.84	9R92.235.6V.74		
	≤19	2x49	64	79	1497x297x58	•	•	5,9	9R92.249.6V.A4	9R92.249.6V.84	9R92.249.6V.74		
	≤19	2x54	59	75	1197x297x58	•	•	4,9	9R92.254.6V.A4	9R92.254.6V.84	9R92.254.6V.74		
	≤22	2x80	59	82	1497x297x58	•	•	5,9	9R92.280.6V.A4	9R92.280.6V.84	9R92.280.6V.74		

DOP - Difusor de policarbonato opal

	L	MP*	UGR	W	Lm/W	η(%)	AxBxC (mm)	K1	K3	Kg	HF	DSI	DALI
T5	≤22	1x28	45	53	1197x121x58	-	-	3,3	9R92.128.21.A4	9R92.128.21.84	9R92.128.21.74		
	≤22	1x35	51	58	1497x121x58	-	-	4,0	9R92.135.21.A4	9R92.135.21.84	9R92.135.21.74		
	≤22	1x49	43	52	1497x121x58	-	-	4,0	9R92.149.21.A4	9R92.149.21.84	9R92.149.21.74		
	≤25	1x54	41	52	1197x121x58	-	-	3,3	9R92.154.21.A4	9R92.154.21.84	9R92.154.21.74		
	≤25	1x80	43	60	1497x121x58	-	-	4,0	9R92.180.21.A4	9R92.180.21.84	9R92.180.21.74		
	≤22	2x28	56	65	1197x297x58	•	•	4,9	9R92.228.21.A4	9R92.228.21.84	9R92.228.21.74		
	≤22	2x35	57	66	1497x297x58	•	•	5,9	9R92.235.21.A4	9R92.235.21.84	9R92.235.21.74		
	≤22	2x49	52	64	1497x297x58	•	•	5,9	9R92.249.21.A4	9R92.249.21.84	9R92.249.21.74		
	≤22	2x54	47	60	1197x297x58	•	•	4,9	9R92.254.21.A4	9R92.254.21.84	9R92.254.21.74		
	≤25	2x80	49	68	1497x297x58	•	•	5,9	9R92.280.21.A4	9R92.280.21.84	9R92.280.21.74		

DOA - Difusor acrílico opal

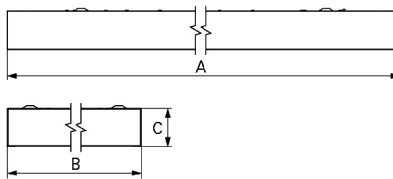
	L	MP*	UGR	W	Lm/W	η(%)	AxBxC (mm)	K1	K3	Kg	HF	DSI	DALI
T5	≤22	1x28	56	65	1197x121x58	-	-	3,3	9R92.128.20.A4	9R92.128.20.84	9R92.128.20.74		
	≤22	1x35	60	69	1497x121x58	-	-	4,0	9R92.135.20.A4	9R92.135.20.84	9R92.135.20.74		
	≤22	1x49	51	62	1497x121x58	-	-	4,0	9R92.149.20.A4	9R92.149.20.84	9R92.149.20.74		
	≤25	1x54	49	63	1197x121x58	-	-	3,3	9R92.154.20.A4	9R92.154.20.84	9R92.154.20.74		
	≤25	1x80	51	71	1497x121x58	-	-	4,0	9R92.180.20.A4	9R92.180.20.84	9R92.180.20.74		
	≤22	2x28	66	76	1197x297x58	•	•	4,9	9R92.228.20.A4	9R92.228.20.84	9R92.228.20.74		
	≤22	2x35	66	76	1497x297x58	•	•	5,9	9R92.235.20.A4	9R92.235.20.84	9R92.235.20.74		
	≤25	2x49	62	76	1497x297x58	•	•	5,9	9R92.249.20.A4	9R92.249.20.84	9R92.249.20.74		
	≤25	2x54	57	72	1197x297x58	•	•	4,9	9R92.254.20.A4	9R92.254.20.84	9R92.254.20.74		
	≤25	2x80	57	80	1497x297x58	•	•	5,9	9R92.280.20.A4	9R92.280.20.84	9R92.280.20.74		

La empresa se reserva el derecho de hacer cambios técnicos sin previo aviso.  
Los datos eléctricos/ópticos están sujetos a una tolerancia de +/-10%.

**OPCIONES**

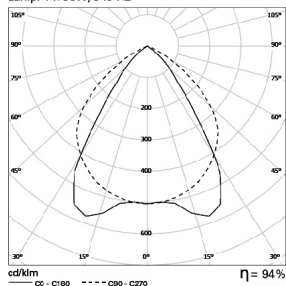
Código	Descripción
--	Sensor de luz y presencia.
BM	Panel microperforado.
K3	Kit de emergencia 3 horas.
K1	Kit de emergencia 1 hora.
--	Opción de lámparas.

**DIMENSIONES**

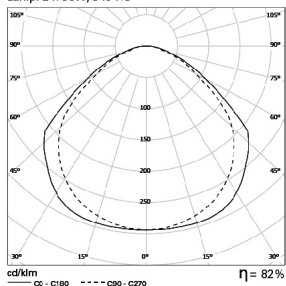


**FOTOMETRÍA**

**LNS 1x35W P-SILVER**  
Lamp: 1 x 35W/840 HE



**LNS 2x80W DAM**  
Lamp: 2 x 80W/840 H-O



**DESCRIPCIÓN:**

Luminaria individual de superficie, para una o dos lámparas T5 (G5) de 28/35/49/54/80W. Disponible con óptica de alto rendimiento en aluminio P-Silver/brillante/mate o difusor microprismático/polycarbonato opal. Opción de sensor de luz y presencia. Disponible en versión dimmable y Kit de emergencia de 1 o 3 horas – como Indelague LNS.

La empresa se reserva el derecho de hacer cambios técnicos sin previo aviso. Los datos eléctricos/ópticos están sujetos a una tolerancia de +/-10%.