

Norms: EN 60598-1, EN 60598-2-1



PRODUCT DESCRIPTION

Areas of Application: Commercial and Business areas, Public buildings, Offices, Schools, Corridors.

Mounting: Surface/Suspended.

Light Distribution: Direct.

Control Gear: Electronic equipment, 220-240VAC-50/60Hz.

Materials: Body: Steel sheet.

Surface Finish: Powder coated in white matt (RAL9016).

PS - P-SILVER Double parabolic louvre (middle)


	LAMP*	UGR	W	Lm/W	η(%)	AxBxC (mm)	K1	K3	Kg	HF	DSI	DALI
	T5	≤19	1x14	60	84	579x121x58	-	-	2,4	9R1F.114.3T.A4	9R1F.114.3T.84	9R1F.114.3T.74
		≤19	1x24	58	82	579x121x58	-	-	2,4	9R1F.124.3T.A4	9R1F.124.3T.84	9R1F.124.3T.74
		≤19	1x28	76	89	1179x121x58	-	-	2,8	9R1F.128.3T.A4	9R1F.128.3T.84	9R1F.128.3T.74
		≤19	1x35	82	94	1479x121x58	-	-	3,9	9R1F.135.3T.A4	9R1F.135.3T.84	9R1F.135.3T.74
		≤19	1x49	73	88	1479x121x58	-	-	3,9	9R1F.149.3T.A4	9R1F.149.3T.84	9R1F.149.3T.74
		≤19	1x54	67	86	1179x121x58	-	-	2,8	9R1F.154.3T.A4	9R1F.154.3T.84	9R1F.154.3T.74
		≤22	1x80	68	94	1479x121x58	-	-	3,9	9R1F.180.3T.A4	9R1F.180.3T.84	9R1F.180.3T.74
		≤16	2x14	64	86	579x297x58	-	-	2,5	9R1F.214.3T.A4	9R1F.214.3T.84	9R1F.214.3T.74
		≤16	2x24	63	87	579x297x58	-	-	2,5	9R1F.224.3T.A4	9R1F.224.3T.84	9R1F.224.3T.74
		≤19	2x28	78	90	1179x297x58	•	•	4,2	9R1F.228.3T.A4	9R1F.228.3T.84	9R1F.228.3T.74
		≤19	2x35	78	90	1479x297x58	•	•	4,8	9R1F.235.3T.A4	9R1F.235.3T.84	9R1F.235.3T.74
		≤19	2x49	72	89	1479x297x58	•	•	4,8	9R1F.249.3T.A4	9R1F.249.3T.84	9R1F.249.3T.74
		≤19	2x54	71	90	1179x297x58	•	•	4,2	9R1F.254.3T.A4	9R1F.254.3T.84	9R1F.254.3T.74
		≤19	2x80	64	89	1479x297x58	•	•	4,8	9R1F.280.3T.A4	9R1F.280.3T.84	9R1F.280.3T.74

* Lamp not included.


Example code for order: (2x) 9R1F.228.3T.74 (DALI) + 9204 + 9463 + BM (OPTIONS)

We reserve the right to make technical changes without prior notice.
Electrical/Optical data are subjected to a tolerance of +/-10%.

PB - Polished double parabolic louvre (middle)

LAMP*	UGR	W	Lm/W	η(%)	AxBxC (mm)	K1	K3	Kg	HF	DSI	DALI	
	T5	≤19	1x14	53	74	579x121x58	-	-	2,4	9R1F.114.81.A4	9R1F.114.81.84	9R1F.114.81.74
	≤19	1x24	52	73	579x121x58	-	-	2,4	9R1F.124.81.A4	9R1F.124.81.84	9R1F.124.81.74	
	≤19	1x28	67	78	1179x121x58	-	-	2,8	9R1F.128.81.A4	9R1F.128.81.84	9R1F.128.81.74	
	≤19	1x35	83	83	1479x121x58	-	-	3,9	9R1F.135.81.A4	9R1F.135.81.84	9R1F.135.81.74	
	≤19	1x49	63	77	1479x121x58	-	-	3,9	9R1F.149.81.A4	9R1F.149.81.84	9R1F.149.81.74	
	≤19	1x54	60	77	1179x121x58	-	-	2,8	9R1F.154.81.A4	9R1F.154.81.84	9R1F.154.81.74	
	≤19	1x80	61	84	1479x121x58	-	-	3,9	9R1F.180.81.A4	9R1F.180.81.84	9R1F.180.81.74	
	≤13	2x14	57	77	579x297x58	-	-	2,5	9R1F.214.81.A4	9R1F.214.81.84	9R1F.214.81.74	
	≤16	2x24	57	79	579x297x58	-	-	2,5	9R1F.224.81.A4	9R1F.224.81.84	9R1F.224.81.74	
	≤16	2x28	68	79	1179x297x58	•	•	4,2	9R1F228.81.A4	9R1F.228.81.84	9R1F.228.81.74	
	≤16	2x35	70	80	1479x297x58	•	•	4,8	9R1F.235.81.A4	9R1F.235.81.84	9R1F.235.81.74	
	≤19	2x49	64	79	1479x297x58	•	•	4,8	9R1F.249.81.A4	9R1F.249.81.84	9R1F.249.81.74	
	≤19	2x54	62	79	1179x297x58	•	•	4,2	9R1F.254.81.A4	9R1F.254.81.84	9R1F.254.81.74	
	≤19	2x80	55	77	1479x297x58	•	•	4,8	9R1F280.81.A4	9R1F.280.81.84	9R1F.280.81.74	

PM - Satin double parabolic louvre (middle)

LAMP*	UGR	W	Lm/W	η(%)	AxBxC (mm)	K1	K3	Kg	HF	DSI	DALI	
	T5	≤16	1x14	45	62	579x121x58	-	-	2,4	9R1F.114.95.A4	9R1F.114.95.84	9R1F.114.95.74
	≤19	1x24	43	61	579x121x58	-	-	2,4	9R1F.124.95.A4	9R1F.124.95.84	9R1F.124.95.74	
	≤16	1x28	56	66	1179x121x58	-	-	2,8	9R1F.128.95.A4	9R1F.128.95.84	9R1F.128.95.74	
	≤16	1x35	61	70	1479x121x58	-	-	3,9	9R1F.135.95.A4	9R1F.135.95.84	9R1F.135.95.74	
	≤19	1x49	55	66	1479x121x58	-	-	3,9	9R1F.149.95.A4	9R1F.149.95.84	9R1F.149.95.74	
	≤19	1x54	49	62	1179x121x58	-	-	2,8	9R1F.154.95.A4	9R1F.154.95.84	9R1F.154.95.74	
	≤19	1x80	51	71	1479x121x58	-	-	3,9	9R1F.180.95.A4	9R1F.180.95.84	9R1F.180.95.74	
	≤13	2x14	49	66	579x297x58	-	-	2,5	9R1F.214.95.A4	9R1F.214.95.84	9R1F.214.95.74	
	≤13	2x24	49	67	579x297x58	-	-	2,5	9R1F.224.95.A4	9R1F.224.95.84	9R1F.224.95.74	
	≤16	2x28	57	66	1179x297x58	•	•	4,2	9R1F228.95.A4	9R1F.228.95.84	9R1F.228.95.74	
	≤16	2x35	59	68	1479x297x58	•	•	4,8	9R1F.235.95.A4	9R1F.235.95.84	9R1F.235.95.74	
	≤16	2x49	55	67	1479x297x58	•	•	4,8	9R1F.249.95.A4	9R1F.249.95.84	9R1F.249.95.74	
	≤19	2x54	52	66	1179x297x58	•	•	4,2	9R1F.254.95.A4	9R1F.254.95.84	9R1F.254.95.74	
	≤19	2x80	48	67	1479x297x58	•	•	4,8	9R1F280.95.A4	9R1F.280.95.84	9R1F.280.95.74	

Please note:

To complete a line, start kit will be necessary. Please order separately.
Dimensions without end caps, add 24 mm to complete the line. 14/24W version only available as end part of the line.

OPTIONS

Start Kit



Start Kit 1 Lamp

- 2 end caps and one cable lock, includes screws.

Order code

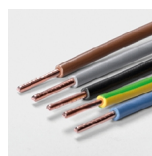
920401

Start Kit 2 Lamps

- 2 end caps and one cable lock, includes screws.

920402

Through-wiring



- 1,5 mm2 through-wiring
- 3 x 1,5 mm2
- 5 x 1,5 mm2
- 2,5 mm2 through-wiring
- 3 x 2,5 mm2
- 5 x 2,5 mm2

Order code

9462

9463

9464

9465

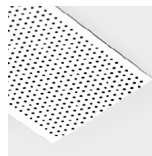
We reserve the right to make technical changes without prior notice.
Electrical/Optical data are subjected to a tolerance of +/-10%.

Light and presence sensor



Please note:
This option can be supplied on request.

Microperforated panel



Microperforated panel

Order code
BM

Emergency unit



Emergency unit 3 hours
Emergency unit 1 hour

Order code
K3
K1

Lamps as optional



Please note:
This option can be supplied on request.

Bespoke projects

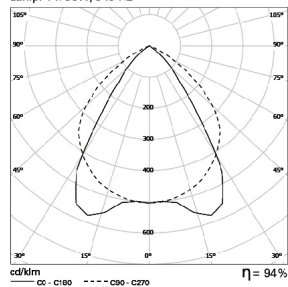


Please note:
This option can be supplied on request.

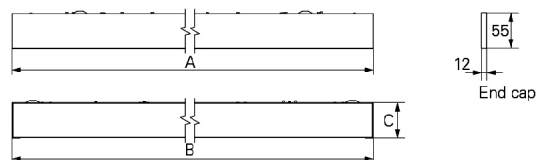
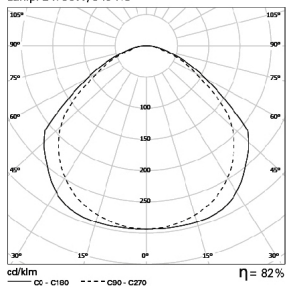
PHOTOMETRY

DIMENSIONS

LNS Line 1x35W P-SILVER
Lamp: 1 x 35W/840 HE



LNS Line 2x80W DAM
Lamp: 2 x 80W/840 HO



TO SPECIFY:

Surface T5(G5) luminaire for continuous line. Single or twin
14/24/28/35/49/54/80W fluorescent lamp for P-Silver/polished/satin high output
aluminium louvre. Optional light/presence sensor, dimmable versions and 1 or 3
hours emergency available – as Indelague LNS Line.

We reserve the right to make technical changes without prior notice.
Electrical/Optical data are subjected to a tolerance of +/-10%.