

Norms: EN 60598-1, EN 60598-2-1



### PRODUCT DESCRIPTION

**Areas of Application:** Commercial and Business areas, Public buildings, Housing, Offices, Hotel and Restaurant services, Art and Culture spaces.

**Mounting:** Wall Mounted.

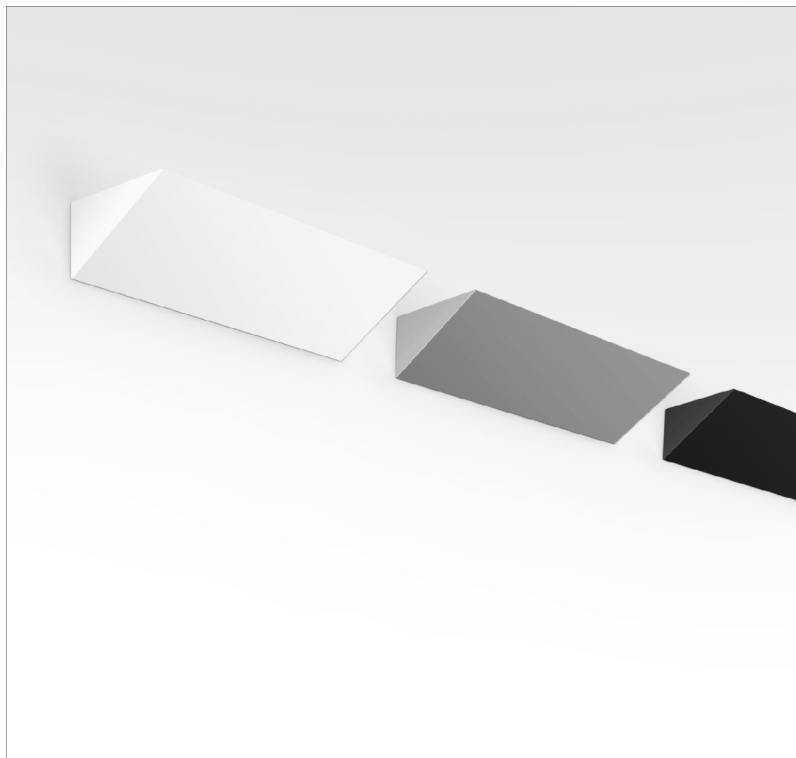
**Light Distribution:** Indirect.

**Light Source:** TC-L (2G11) lamp.

**Control Gear:** Electronic equipment, 220-240VAC-50/60Hz.

**Materials:** Body: Steel sheet.

**Surface Finish:** Powder coated.



LAMP*		W	AxBxC (mm)	Kg	HF	DSI	DALI
TC-L	2G11	1x24	380x200x126	2	90012.M124.A	--	--
	2G11	1x36	450x200x126	2	90012.M136.A	90012.M136.C	90012.M136.D
	2G11	1x55	600x200x126	2,7	90012.M155.A	90012.M155.C	90012.M155.D
	2G11	1x80	600x200x126	2,7	90012.M180.A	90012.M180.C	90012.M180.D
	2G11	2x24	380x200x126	1,9	90012.M224.A	--	--
	2G11	2x36	450x200x126	2,2	90012.M236.A	90012.M236.C	90012.M236.D
	2G11	2x55	600x200x126	2,8	90012.M255.A	90012.M255.C	90012.M255.D

### COLOUR / FINISH

Code	Description
W	White (RAL 9016)
B	Black (RAL 9005)
G	Grey (RAL 9006)

### OPTIONS

Code	Description
--	Lamps as optional.

### DETAILS



Interior detail

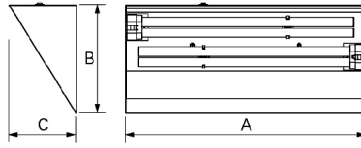
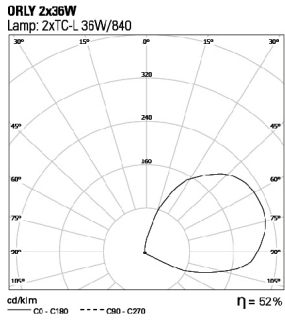
\* Lamp not included.

Example code for order: 90012.M136.D (DALI) + W (COLOUR/FINISH)

We reserve the right to make technical changes without prior notice. Electrical/Optical data are subjected to a tolerance of +/-10%.

**PHOTOMETRY**

**DIMENSIONS**



**TO SPECIFY:**

Wall mounted slim upright luminaire with indirect lighting effect. Single 24/36/55/80W or twin 24/36/55W TC-L lamp - as Roxo Lighting ORLY.

We reserve the right to make technical changes without prior notice. Electrical/Optical data are subjected to a tolerance of +/-10%.