

REBA 35 D/I LED Line

EN INSTALLATION INSTRUCTIONS
FR INSTRUCTIONS D'INSTALLATION
PT INSTRUÇÕES DE MONTAGEM
ES INSTRUCCIONES DE MONTAJE



EN FOR MOUNTING THIS PRODUCT, PLEASE, READ THE ADDITIONAL ASSEMBLY INSTRUCTIONS.

FR POUR MONTER CE PRODUIT, LIRE LES INSTRUCTIONS DE MONTAGE SUPPLÉMENTAIRES.

PT PARA A MONTAGEM DO PRODUTO, CONSULTE AS INSTRUÇÕES DE MONTAGEM COMPLEMENTARES.

ES PARA MONTAR ESTE PRODUCTO, LEA LAS INSTRUCCIONES DE MONTAJE ADICIONALES.



IIV586

WWW.ROXOLIGHTING.COM

WWW.INDELAGUE.COM

IIV569/0

CE RoHS IP40 850°C 230V/50Hz SELV

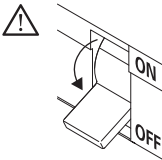
EN Please read carefully the installation instructions given before installing the appliance, the general terms and conditions of use and environmental concern with recycling attached. | **FR** Lire attentivement les instructions d'installation données avant l'installation de l'appareil, les conditions générales d'utilisations et de préoccupation environnementales avec les recyclage ci-joint. | **PT** Leia atentamente as instruções de montagem fornecidas antes de instalar o aparelho, as condições gerais de uso e preocupação ambiental com a reciclagem, em anexo. | **ES** Antes de instalar el aparato, lea atentamente las instrucciones facilitadas, las condiciones generales de uso y preocupación ambiental con el reciclaje adjuntos.

EN We reserve the right to make changes on technical specifications, design and installation leaflet without prior notice. | **FR** Sous réserve de modifications au niveau de la conception, des spécifications techniques et de la notice. | **PT** O fabricante reserva-se no direito de realizar modificações no desenho, especificações técnicas e folheto, sem aviso prévio. | **ES** El fabricante se reserva el derecho de realizar modificaciones en el diseño, las especificaciones técnicas y el folleto.

REBA 35 D/I LED Line



order code	(mm)
90454L004...	1122x35x100
90454L005...	1402x35x100
90454L006...	1682x35x100
90454L008...	2244x35x100
90454L009...	2524x35x100
90454L010...	2804x35x100



EN WARNING: THE LIGHT SOURCE CONTAINED IN THE LUMINAIRE SHOULD BE REPLACED ONLY BY THE MANUFACTURER. DO NOT USE THIS EQUIPMENT IN AREAS CONTAINING CHEMICAL AGENTS: ACIDS, SOLVENTS, PAINTS, SILICONES, COATINGS, ETC.

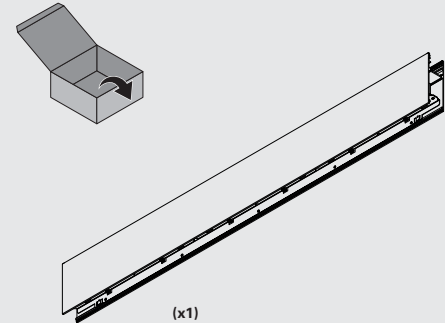
FR ADVERTISSEMENT: LA SOURCE DE LUMIÈRE CONTENUE DANS LA LUMINAIRE DOIT ÊTRE REMPLACÉE PAR LE FABRICANT. EN CAS D'ANOMALIE DÉTECTÉE, CONTACTEZ LE FABRICANT. NE PAS UTILISER L'ÉQUIPEMENT DANS LES ZONES QUI CONTIENNENT DES AGENTS CHIMIQUES: ACIDES, SOLVANTS, PEINTURES, SILICONES, VERNIS, ETC.

PT ATENÇÃO: A FONTE DE LUZ CONTIDA NA LUMINÁRIA DEVE SER SUBSTITUÍDA UNICAMENTE PELO FABRICANTE. QUALQUER ANOMALIA DETECTADA CONTACTAR O FABRICANTE. NÃO UTILIZAR O EQUIPAMENTO EM ZONAS QUE CONTENHAM AGENTES QUÍMICOS: ÁCIDOS, SOLVENTES, TINTAS, SILICONES, VERNIZES, ETC.

ES ATENCIÓN: LA FUENTE DE LUZ CONTENIDA EN LA LUMINARIA DEBE SER SUSTITUIDA ÚNICAMENTE POR EL FABRICANTE. CUALQUIER ANOMALÍA DETECTADA CONTACTAR CON EL FABRICANTE. NO UTILIZAR LA LUMINARIA EN ZONAS QUE CONTENGAN AGENTES QUÍMICOS: ÁCIDOS, DISOLVENTES, PINTURAS, SILICONAS, BARNICES, ETC."

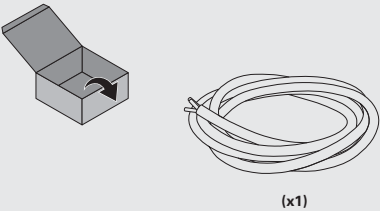
REBA 35 D/I LED Line

90454L004... | 90454L005... | 90454L006...
90454L008... | 90454L009... | 90454L010...

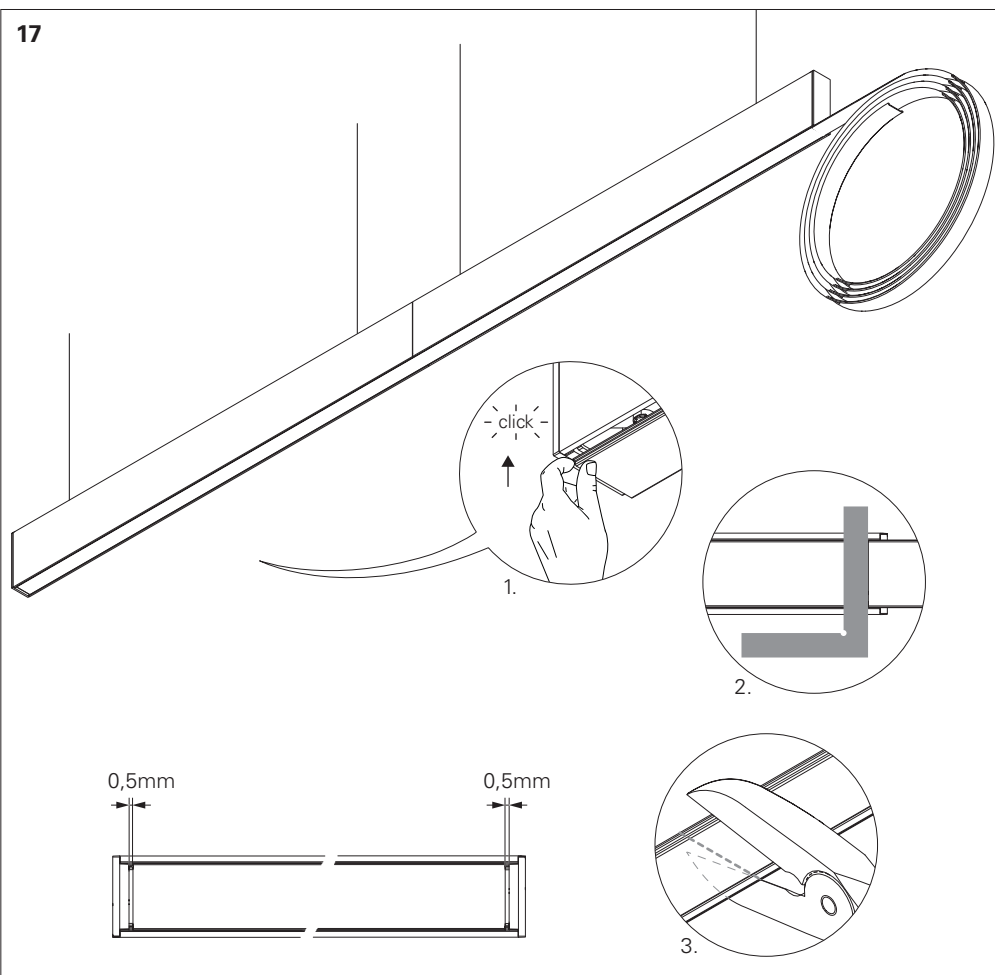


CURRENT SUPPLY CABLE OPTION
OPTION CÂBLE D'ALIMENTATION
OPÇÃO CABO DE ALIMENTAÇÃO
OPCIÓN CABLE DE ALIMENTACIÓN

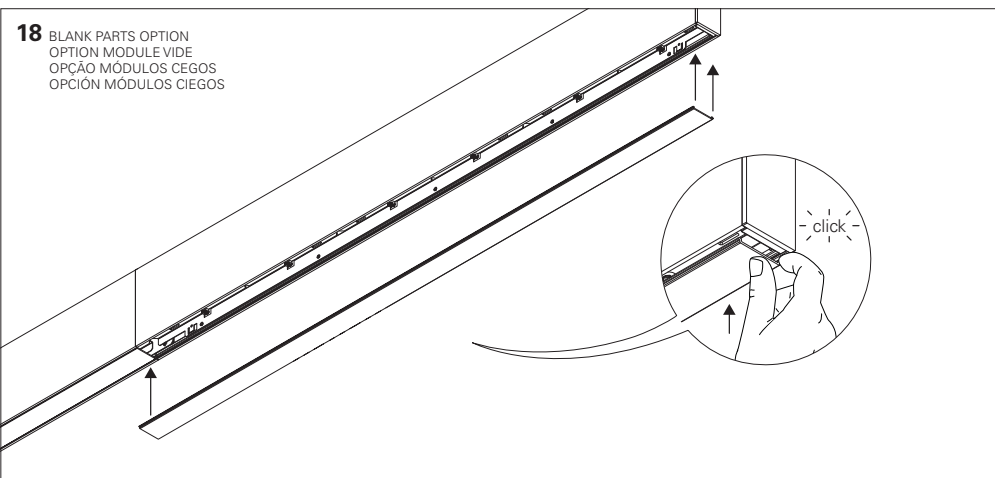
940000 | 940300 | 940400 | 940500



17

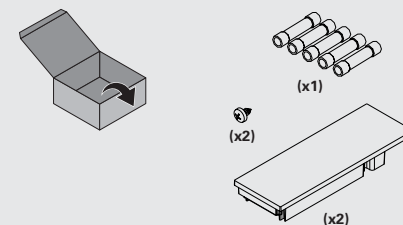


18
BLANK PARTS OPTION
OPTION MODULE VIDE
OPÇÃO MÓDULOS CEGOS
OPCIÓN MÓDULOS CIEGOS



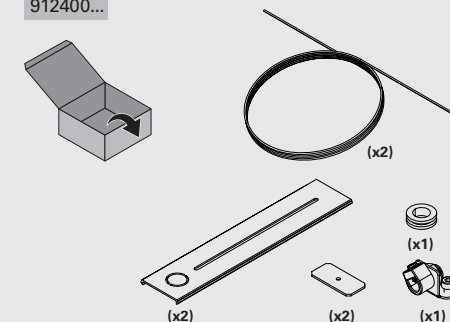
START KIT OPTION
OPTION KIT DÉBUT DE LIGNE
OPÇÃO START KIT
OPCIÓN START KIT

92291...



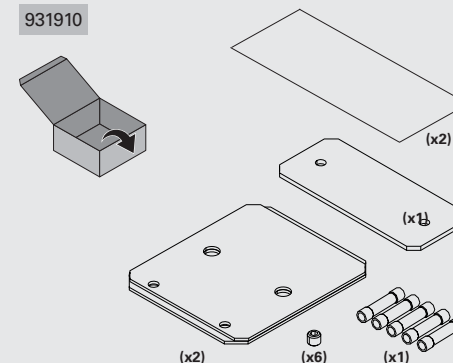
SUSPENSION OPTION
OPTION SUSPENSION
OPÇÃO SUSPENSÃO
OPCIÓN SUSPENSION

912400...



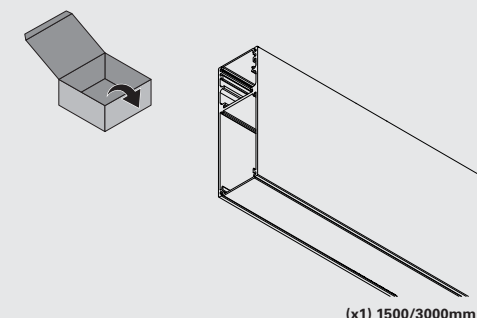
BODY CONNECTOR KIT OPTION
OPTION KIT UNION
OPÇÃO KIT DE UNIÃO
OPCIÓN KIT DE UNIÓN

931910



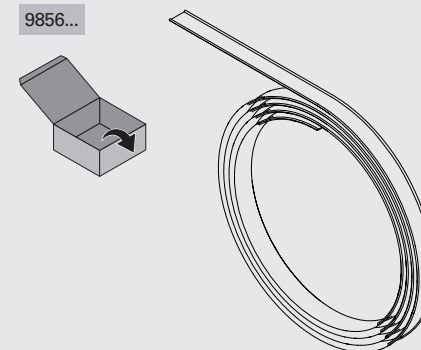
BLANK PARTS OPTION
OPTION MODULE VIDE
OPÇÃO MÓDULOS CEGOS
OPCIÓN MÓDULOS CIEGOS

99281... | 99282...



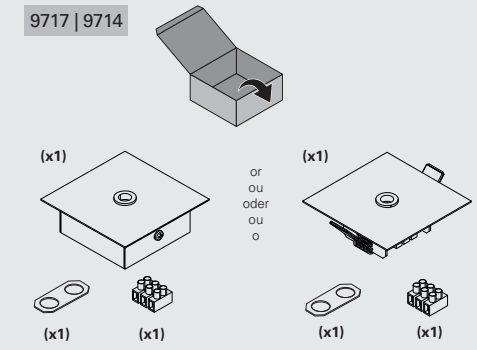
DIFFUSER
DIFFUSEUR
DIFUSOR
DIFUSOR

9856...



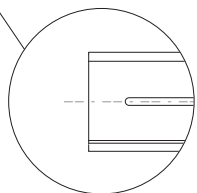
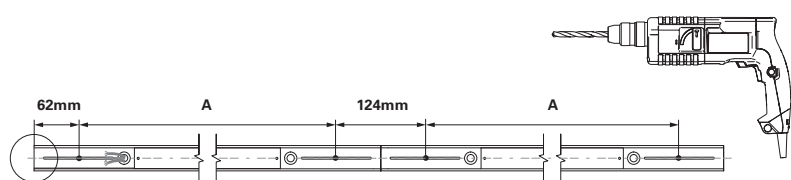
CEILING ROSE OPTION
OPTION PATÈRE DE SUSPENSION
OPÇÃO CAIXA DE ALIMENTAÇÃO
OPCIÓN BASE DE TECHO

9717 | 9714

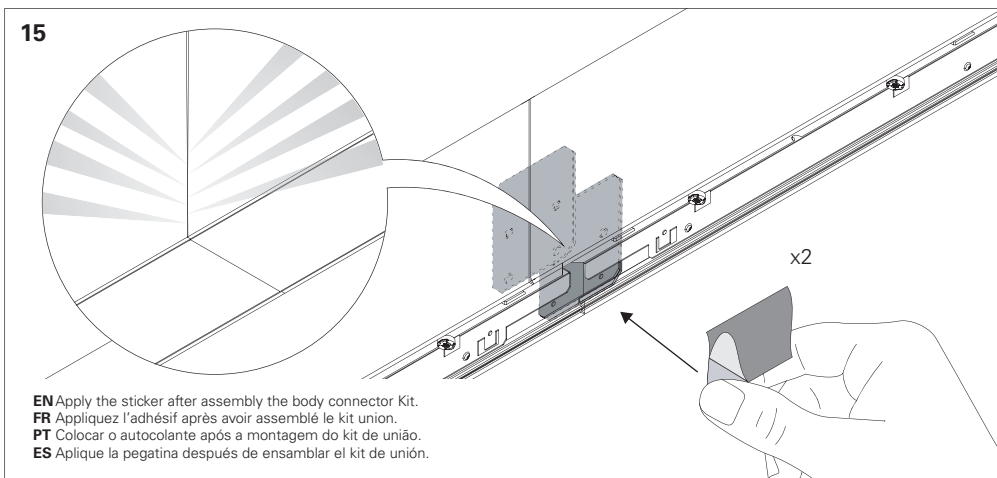
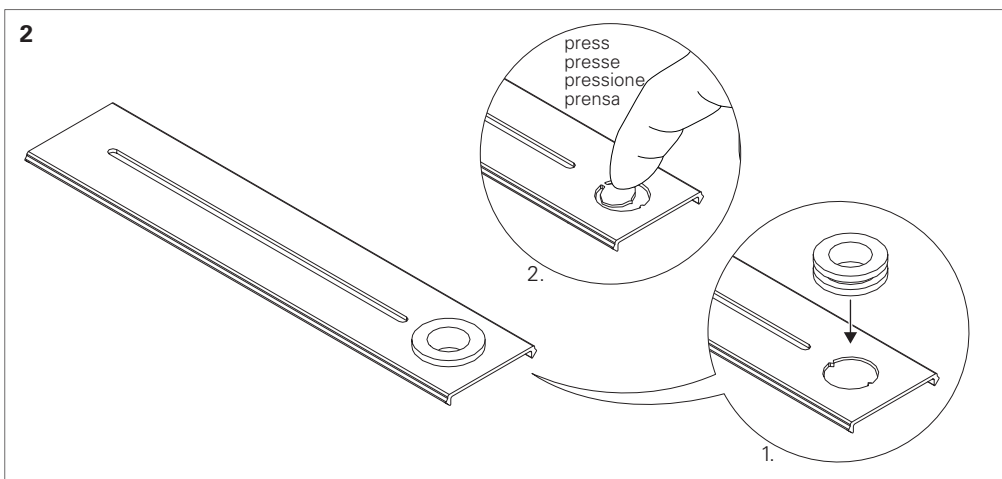
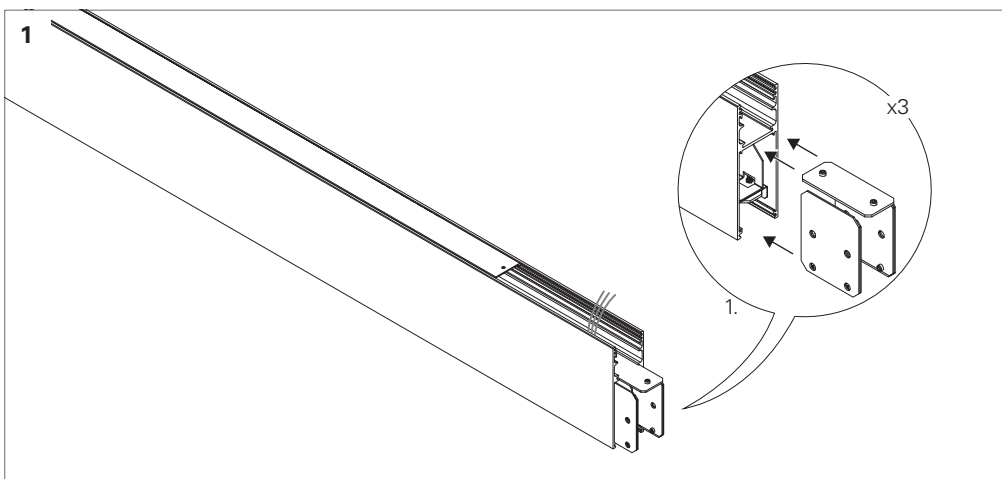


+
IIV586

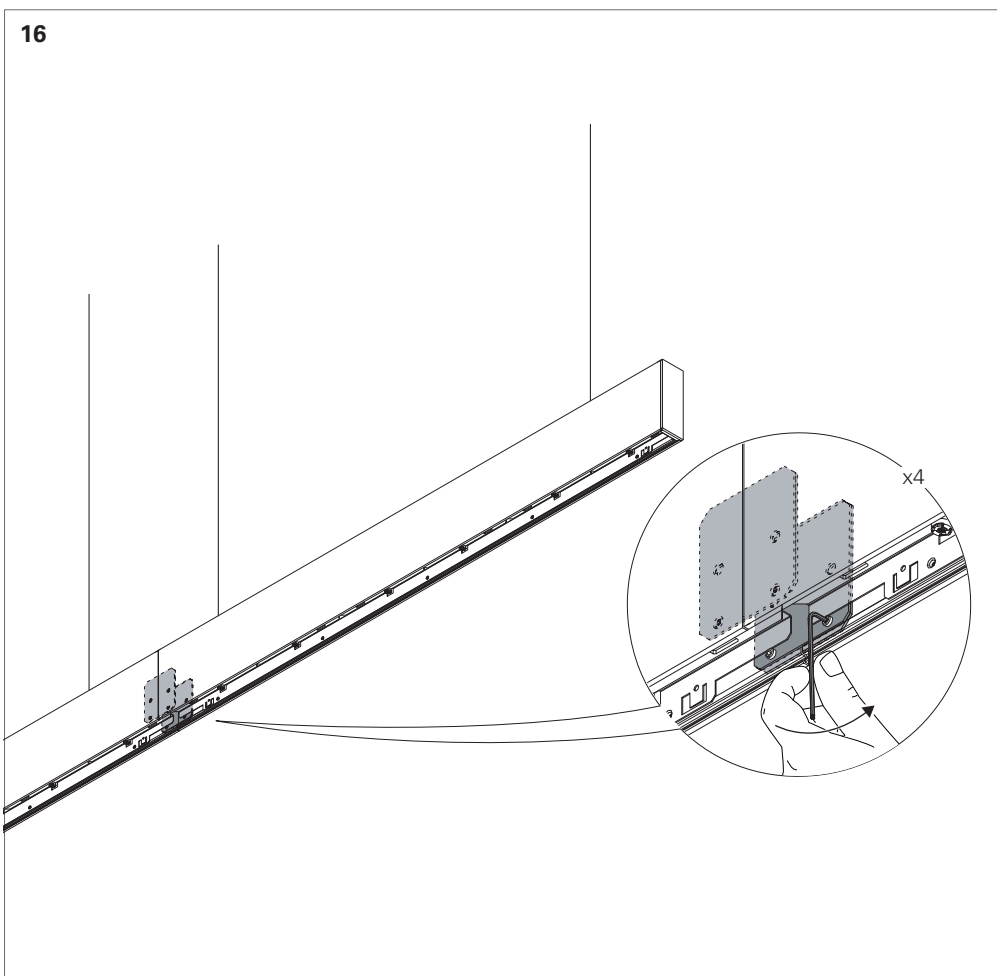
(mm)	A
1122x35x100	998
1402x35x100	1278
1682x35x100	1558
2244x35x100	2120
2524x35x100	2400
2804x35x100	2680



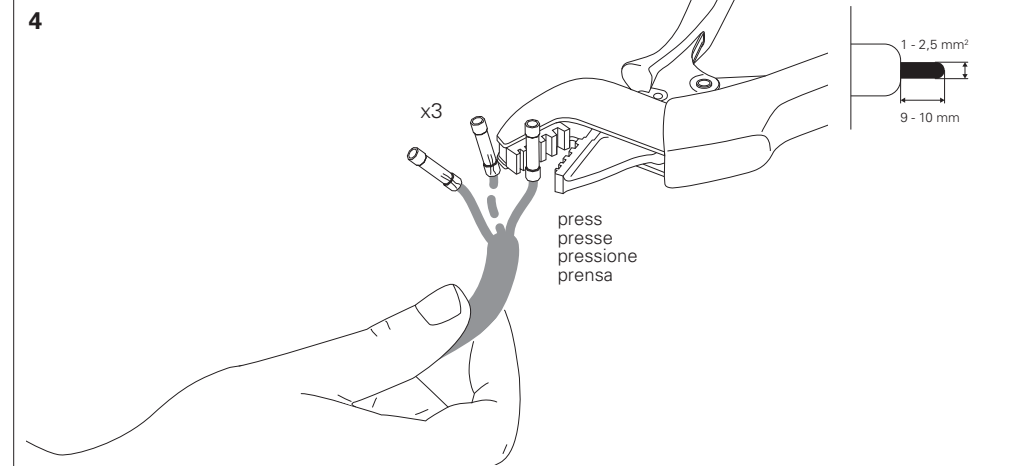
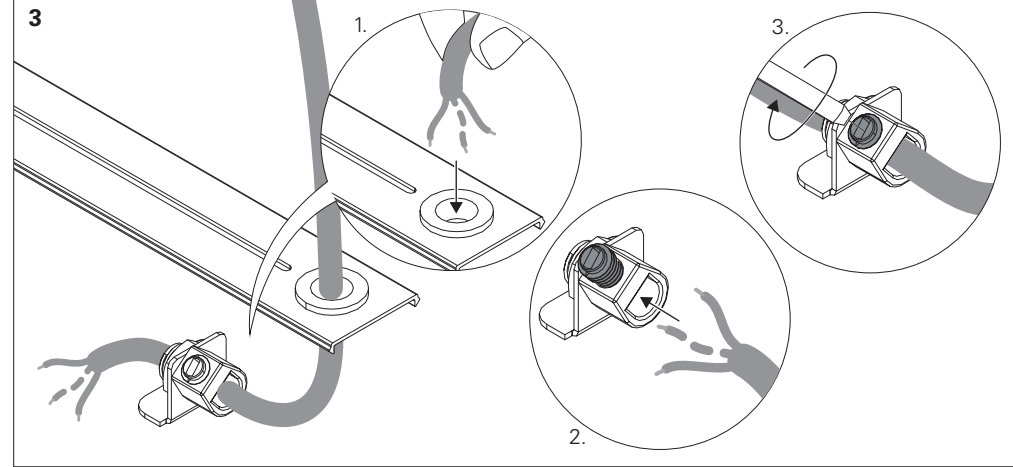
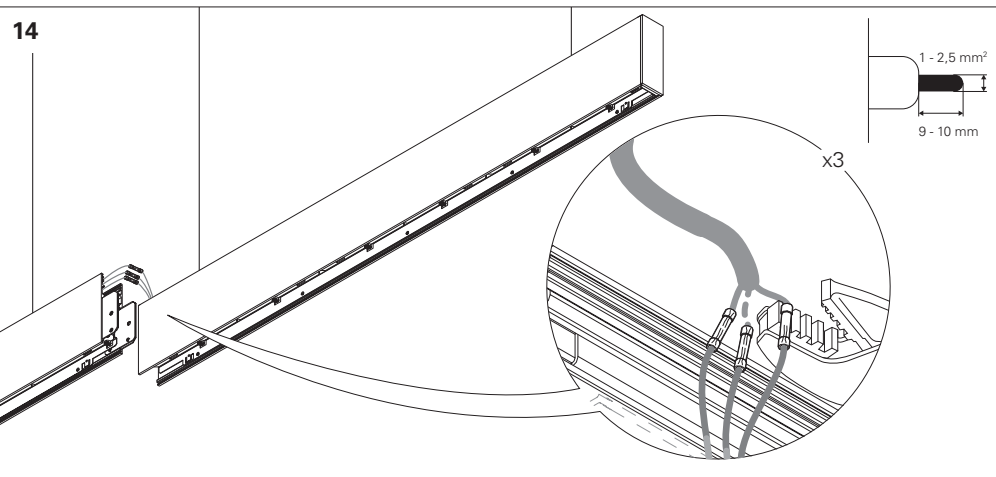
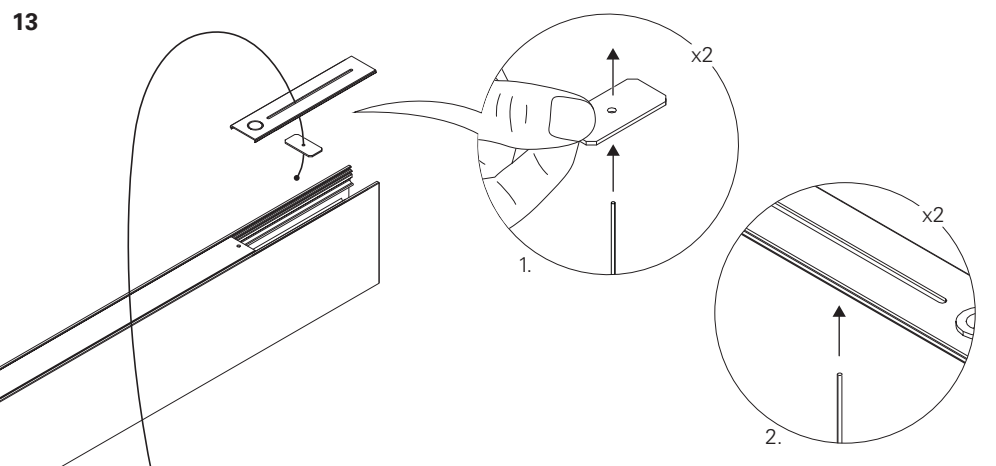
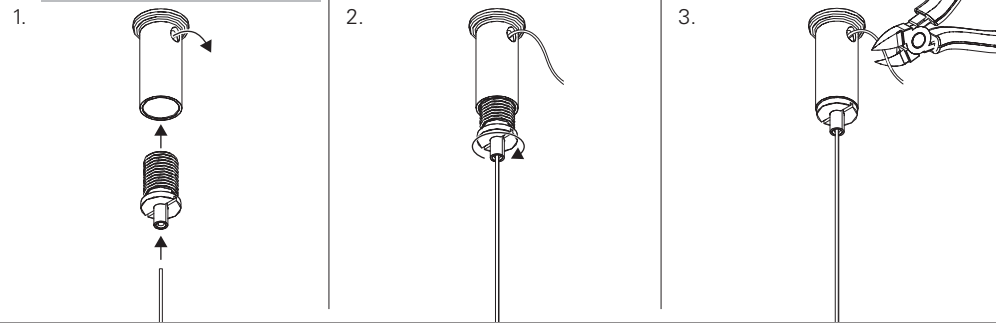
!
EN DIMENSIONS WITHOUT END CAPS.
FR DIMENSIONS SANS EMBOUT.
PT AS DIMENSÕES NÃO INCLUEM OS TOPOS FIM DE LINHA.
ES LAS DIMENSIONES NO INCLUYEN LAS TAPAS FINALES.



EN Apply the sticker after assembly the body connector Kit.
FR Appliquez l'adhésif après avoir assemblé le kit union.
PT Colocar o autocolante após a montagem do kit de união.
ES Aplique la pegatina después de ensamblar el kit de unión.



12 CEILING ROSE, PLEASE READ:
PATÈRE DE SUSPENSION LIRE:
CAIXA DE ALIMENTAÇÃO CONSULTAR:
BASE DE TECHO LEA:
IIV586



5 HF
STANDARD POWER SUPPLY
CÂBLAGE STRANDARD
ALIMENTAÇÃO ELÉCTRICA STANDARD
ELECTRIFICACIÓN ESTÁNDAR

DALI
DIMMABLE POWER SUPPLY
CÂBLAGE AVEC GRADATION
ALIMENTAÇÃO ELÉCTRICA COM REGULAÇÃO
ELECTRIFICACIÓN CON REGULACIÓN

BLUE - N (NEUTRAL)
GREEN AND YELLOW - ⊕ (EARTH)
BROWN - L (LIVE)
GREY - D+
BLACK - D-

BLEU - N (NEUTRE)
VERT ET JAUNE - ⊕ (TERRE)
MARRON - L (PHASE)
GRIS - D+
NOIR - D-

AZUL - N (NEUTRO)
VERDE E AMARELO - ⊕ (TERRA)
CASTANHO - L (FASE)
CINZA - D+
PRETO - D-

AZUL - N (NEUTRAL)
VERDE Y AMARILLO - ⊕ (TIERRA)
MARRÓN - L (FASE)
GRIS - D+
NEGRO - D-

