

LED

Norms: EN 60598-1, EN 60598-2-2



PRODUCT DESCRIPTION

Areas of Application: Commercial, Business areas, Private Houses, Art and Culture spaces. Offices, Public buildings, Hotel and Restaurant services.

Mounting: Recessed.

Light Distribution: Direct.

Light Source: LED 4000K, CRI>80, MacAdam Step<3, 60.000h life (@L90, B10, Ta 25 C).

Optical System: Diffuser: Opal polycarbonate.

Control Gear: LED driver, 220-240VAC-50/60Hz.

Materials: Body: Extruded aluminium profile.

Surface Finish: Anodised in natural colour.

Fixing system: Brackets.

bLINE - Opal polycarbonate diffuser (middle)

LED	UGR	W	lm	lm/W	η(%)	AxBxC (mm)	f	kg	HF	DALI
	≤25	17	2494	87	59	562x50x80	562x41	1,7	90450.L002.E	90450.L002.H
	≤25	25	3741	87	58	842x50x80	842x41	2,3	90450.L003.E	90450.L003.H
	≤25	32	4988	92	59	1122x50x80	1122x41	2,8	90450.L004.E	90450.L004.H
	≤25	40	6235	90	58	1402x50x80	1402x41	3,3	90450.L005.E	90450.L005.H
	≤25	47	7482	91	57	1682x50x80	1682x41	3,8	90450.L006.E	90450.L006.H
	-	57	8729	90	59	1964x50x80	1964x41	4,6	90450.L007.E	90450.L007.H
	-	64	9976	92	59	2244x50x80	2244x41	5,1	90450.L008.E	90450.L008.H
	-	72	11223	92	59	2524x50x80	2524x41	5,6	90450.L009.E	90450.L009.H
	-	80	12470	90	58	2804x50x80	2804x41	6,1	90450.L010.E	90450.L010.H

Add suffix to order: Start - 00000.0000.0.0049 End - 00000.0000.0.0050

- Note:
- To complete a line, start kit will be necessary. Please order separately.
 - Recessed dimensions without end caps, please add 6mm to complete cutting dimensions.
 - Diffuser not included. Please order separately.
 - Profile 562mm only available for end line.
 - The maximum length that a continuous line with one single power-supply can have is 30m.

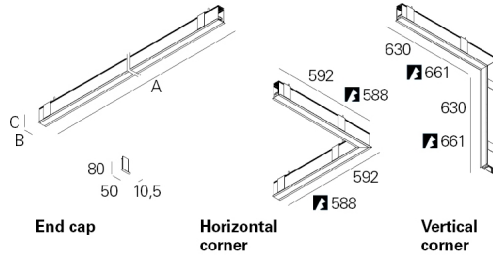
Example code for order: 90450.L004.E.0049 (START) + 90450.L004.E (MIDDLE) + 90450.L004.E.0050(END) + 3000 + 922900G + (2x) 9456 + (2x) 931900 + (3x) 955000(OPTIONS)

We reserve the right to make technical changes without prior notice. Electrical/Optical data are subjected to a tolerance of +/-10%.

COLOUR / FINISH

Code	Description
□ W	White
■ B	Black

DIMENSIONS



OPTIONS

bLINE diffuser



5m length
15m length
30m length

Order code
985605
985615
985630

Colour temperature



3000K
Tunable White

Order code
3000
T000

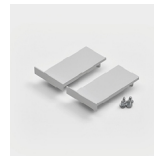
SwitchDIM Tunable White



SwitchDIM Tunable White.

Order code
926600

Start Kit

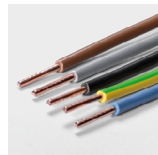


Start Kit - Start/End
White
Black
Grey

• Two end caps included.

Order code
922900W
922900B
922900G

Through-wiring



1,5mm² through-wiring
3 x 1,5 mm²
5 x 1,5 mm²

Order code
9456
9457

Body connector



Body connector

Order code
931900

Light corners



Horizontal
32W HF
32W DALI
Vertical
32W HF
32W DALI

• LED light corner luminaire includes complete gear tray with non-Dimmable or DALI LED driver and polycarbonate diffuser.

Order code
90450.H202.E
90450.H202.H
90450.V202.E
90450.V202.H

Blank parts



1,5m length
3m length

• Includes empty aluminium body and blanking cover.

Order code
992800
992801

We reserve the right to make technical changes without prior notice. Electrical/Optical data are subjected to a tolerance of +/-10%.

Safety cable



Steel safety cable

Order code
955000

Low power version



Option supplied under request.

Bespoke projects

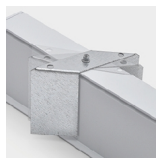


Option supplied under request.

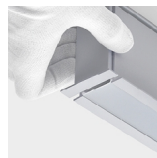
DETAILS



Clip-in diffuser system

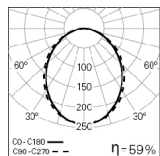


Bracket

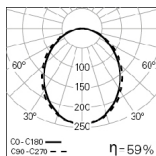


End caps without visible screws

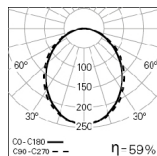
PHOTOMETRY



REBA 35/E LED Line
L1122 bLINE 4000K SRT



REBA 35/E LED Line
L1122 bLINE 4000K MID



REBA 35/E LED Line
L1122 bLINE 4000K END

TO SPECIFY:

Linear recessed LED luminaire with trim, for continuous line. Extruded aluminium profile, anodised in natural colour and 50mm width. Injected polycarbonate end caps, without visible screws, and clip-in polycarbonate bLINE diffuser with up till 30m length in one single piece. Standard version with LED 4000K, CRI>80, MacAdam Step<3 and 60.000h lifetime (@L90, B10, Ta 25 C). Optional DALI dimmable LED driver, 3000K, Tunable White and light corners. - as Roxo Lighting REBA 35 /E LED Line.

We reserve the right to make technical changes without prior notice. Electrical/Optical data are subjected to a tolerance of +/-10%.