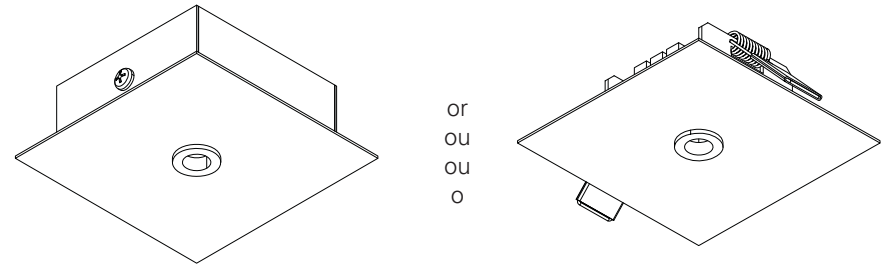


**Ceiling rose | Patère de suspension | Caixa de alimentação |
Base de techo****EN** INSTALLATION INSTRUCTIONS**FR** INSTRUCTIONS D'INSTALLATION**PT** INSTRUÇÕES DE MONTAGEM**ES** INSTRUCCIONES DE MONTAJE

WWW.ROXOLIGHTING.COM

WWW.INDEL AGUE.COM

Article no. / N ° d'article / Artikel Nr. / Artigo n° / Artículo n.º : 9717 | 9714

EN Please read carefully the installation instructions given before installing the appliance, the general terms and conditions of use and environmental concern with recycling attached. | **FR** Lire attentivement les instructions d'installation données avant l'installation de l'appareil, les conditions générales d'utilisations et de préoccupation environnementales avec les recyclage ci-joint. | **PT** Leia atentamente as instruções de montagem fornecidas antes de instalar o aparelho, as condições gerais de uso e preocupação ambiental com a reciclagem, em anexo. | **ES** Antes de instalar el aparato, lea atentamente las instrucciones facilitadas, las condiciones generales de uso y preocupación ambiental con el reciclaje adjuntos.

EN We reserve the right to make changes on technical specifications, design and installation leaflet without prior notice. | **FR** Sous réserve de modifications au niveau de la conception, des spécifications techniques et de la notice. | **PT** O fabricante reserva-se no direito de realizar modificações no desenho, especificações técnicas e folheto, sem aviso prévio. | **ES** El fabricante se reserva el derecho de realizar modificaciones en el diseño, las especificaciones técnicas y el folleto.

IIV566/0

EN CEILING ROSE OPTION
FR OPTION PATÈRE DE SUSPENSION
PT OPÇÃO CAIXA DE ALIMENTAÇÃO
ES OPCIÓN BASE DE TECHO

Surface mounted /
Saillie /
Saliente /
Superfície

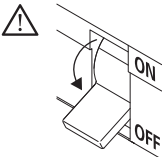
 (mm)
90x90x31

Recessed /
Encastré /
Encastrar /
Empotrar

 (mm)
90x90x35

 Ø70

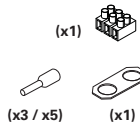
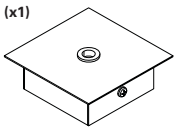
 (mm)
1-25



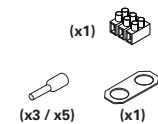
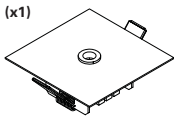
CEILING ROSE OPTION
OPTION PATÈRE DE SUSPENSION
OPÇÃO CAIXA DE ALIMENTAÇÃO
OPCIÓN BASE DE TECHO

9717

Surface mounted / Saillie / Saliente / Superfície

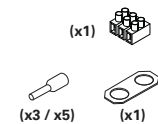
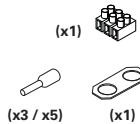


or
ou
oder
ou
o

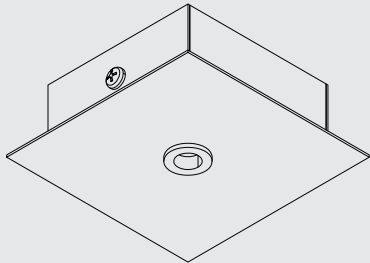


9714

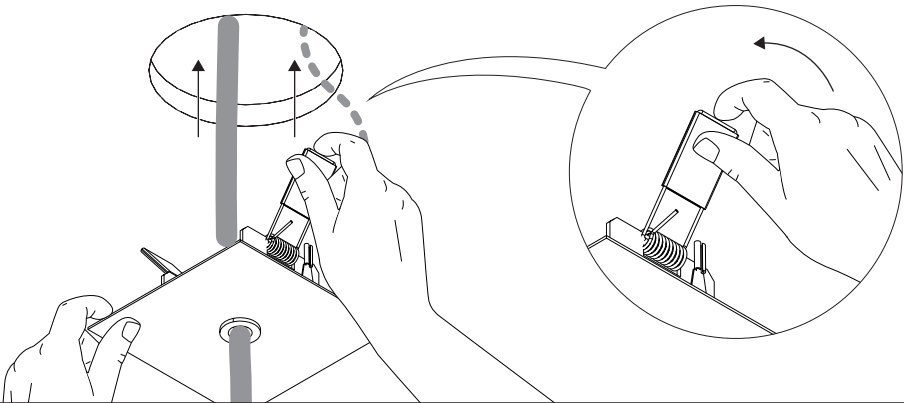
Recessed / Encastré / Encastrar / Empotrar

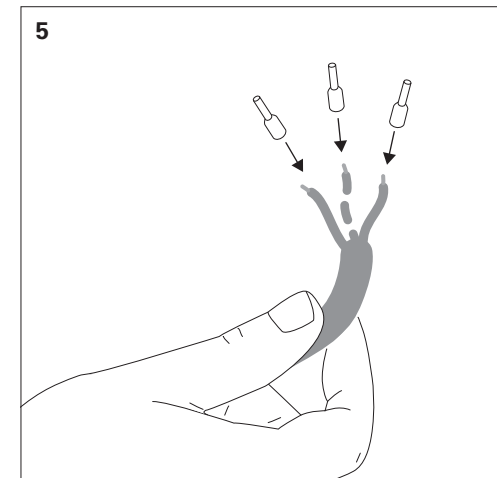
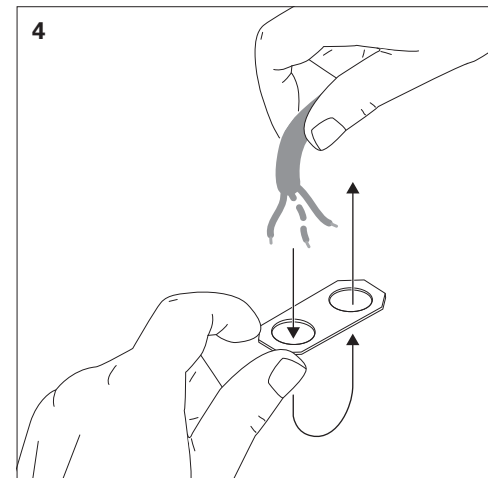
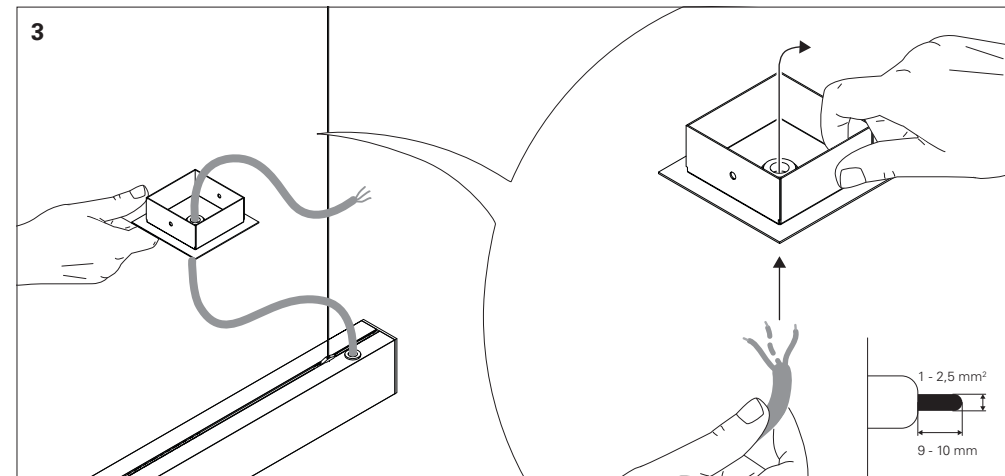
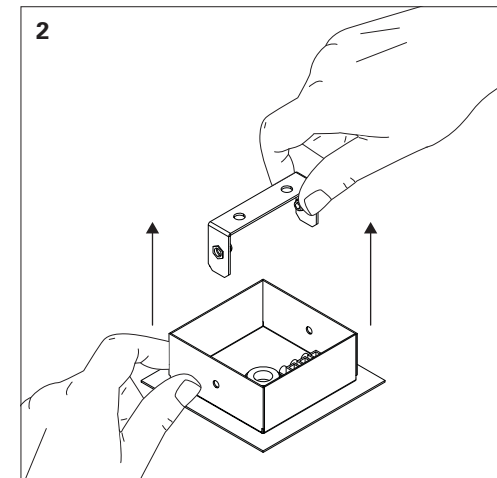
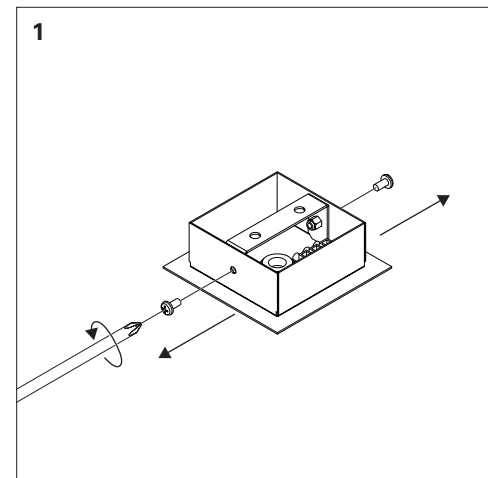
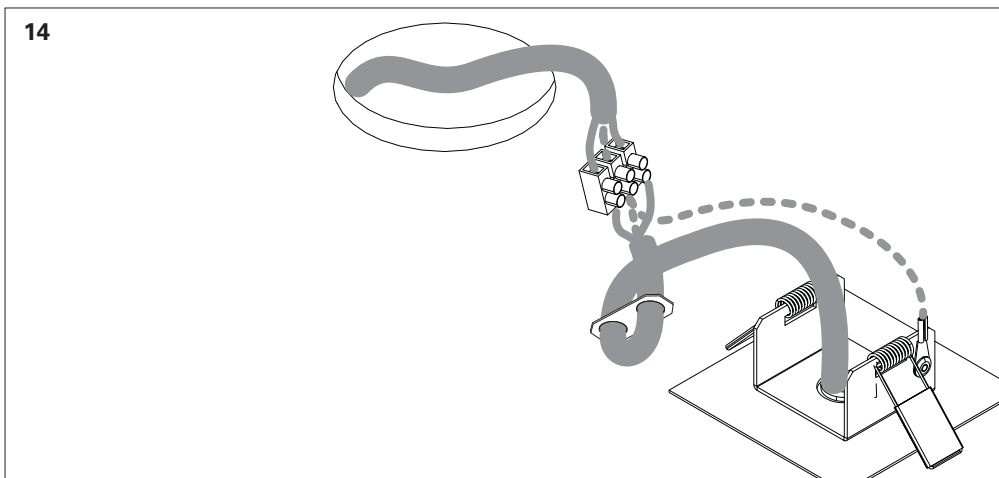
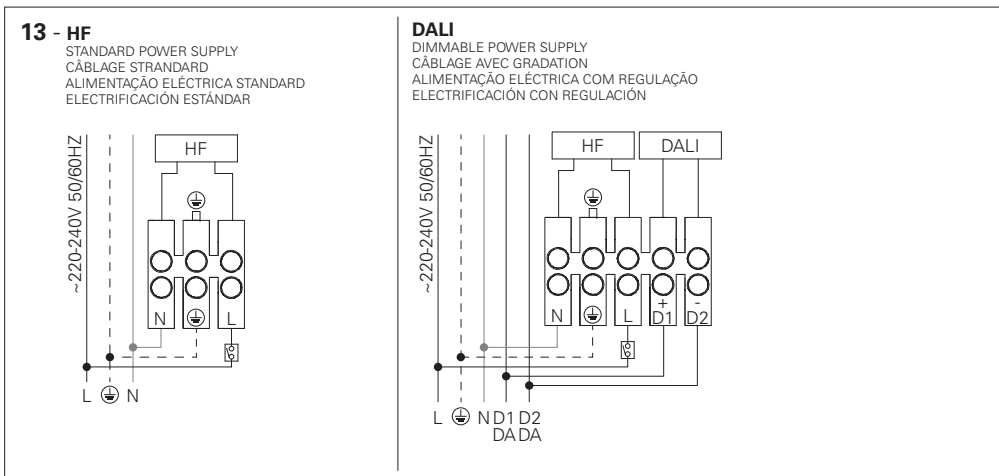
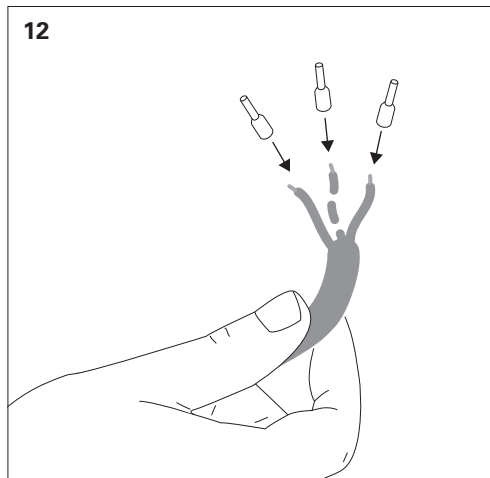
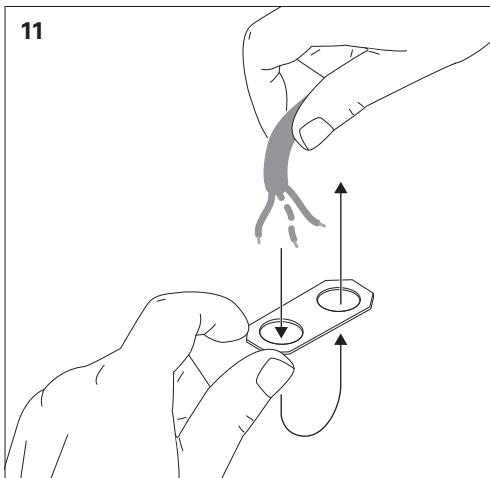


EN SURFACE MOUNTED
FR SAILLIE
PT SALIENTE
ES SUPERFICIE

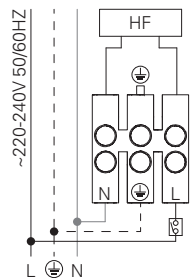


15

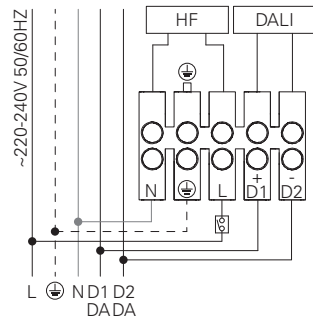




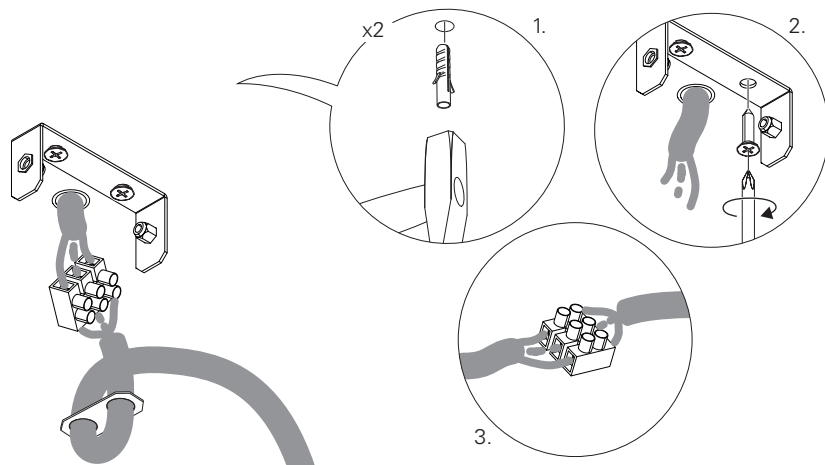
6 - HF
 STANDARD POWER SUPPLY
 CÂBLAGE STRANDARD
 ALIMENTAÇÃO ELÉCTRICA STANDARD
 ELECTRIFICACIÓN ESTÁNDAR



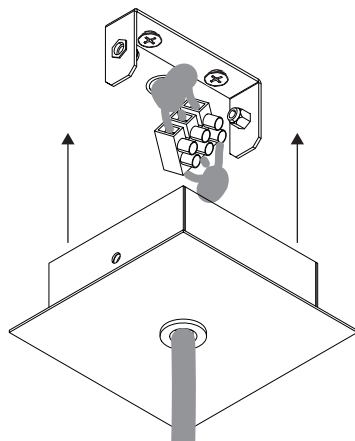
DALI
 DIMMABLE POWER SUPPLY
 CÂBLAGE AVEC GRADATION
 ALIMENTAÇÃO ELÉCTRICA COM REGULAÇÃO
 ELECTRIFICACIÓN CON REGULACIÓN



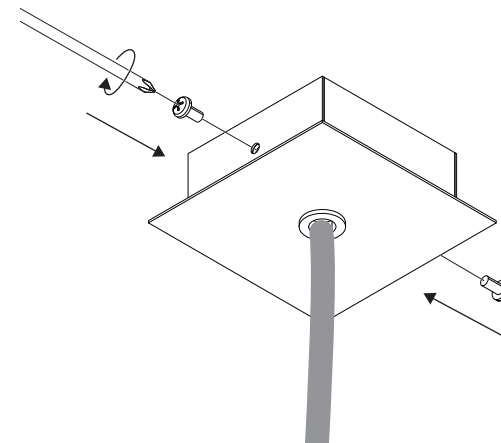
7



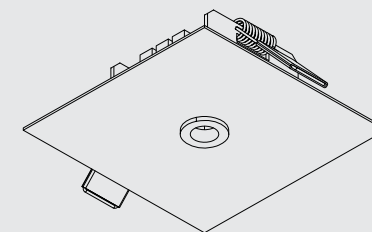
8



9



EN RECESSED
FR ENCASTRE
PT ENCASTRAR
ES EMPOTRAR



10

