

INDELAGUE GROUP

INDELAGUE

ROXO lighting

MADE IN
PORTUGAL

REBA 50 D/I EXT Line | REBA 65 D/I EXT Line

EN INSTALLATION INSTRUCTIONS

FR NOTICE DE MONTAGE

DE MONTAGE-ANLEITUNG

PT INSTRUÇÕES DE MONTAGEM

ES INSTRUCCIONES DE MONTAJE



EN FOR MOUNTING THE SURFACE, SUSPENDED OR WALL VERSIONS, PLEASE READ THE SUPPLEMENTARY MANUALS.

FR POUR LE MONTAGE DES VERSIONS SAILLIE, SUSPENDUES OU APPLIQUE, VEUILLEZ LIRE LES MANUELS SUPPLÉMENTAIRES.

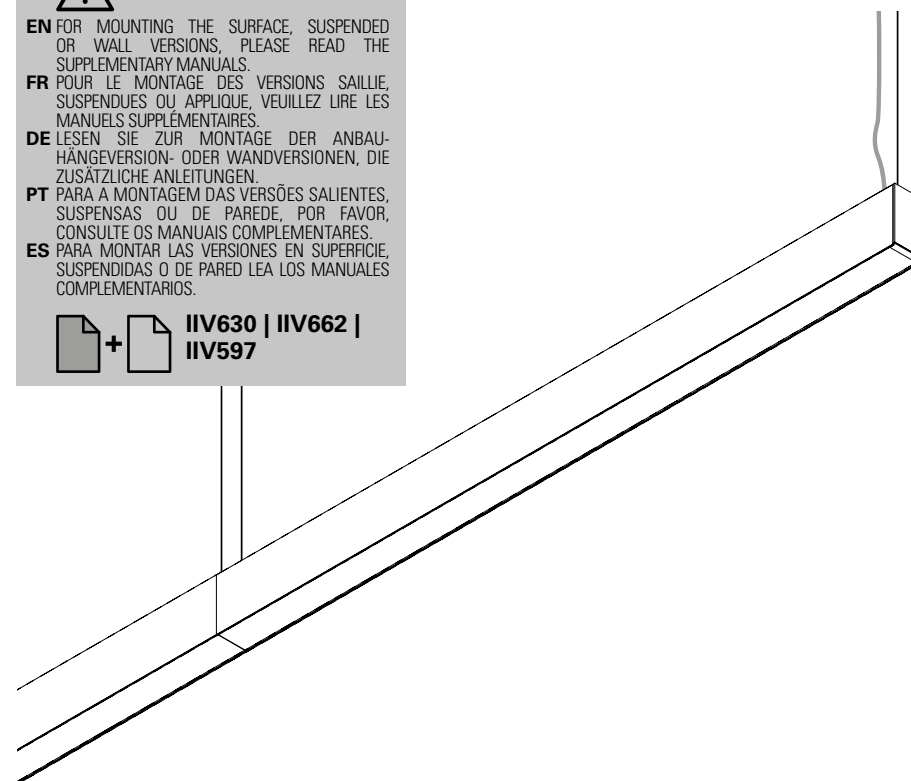
DE LESEN SIE ZUR MONTAGE DER ANBAU-HÄNGEVERSION- ODER WANDVERSIONEN, DIE ZUSÄTZLICHE ANLEITUNGEN.

PT PARA A MONTAGEM DAS VERSÕES SALIENTES, SUSPENSAS OU DE PAREDE, POR FAVOR, CONSULTE OS MANUAIS COMPLEMENTARES.

ES PARA MONTAR LAS VERSIONES EN SUPERFICIE, SUSPENDIDAS O DE PARED LEA LOS MANUALES COMPLEMENTARIOS.



**IIV630 | IIV662 |
IIV597**



Order code / Code com. / Bestell-Nr. / Código / Código: 90508...| 90512...







EN Please read carefully the installation instructions given before installing the appliance, the general terms and conditions of use and environmental concern with recycling attached. | **FR** Lire attentivement les notices de montage avant l'installation de l'appareil, les conditions générales de ventes et les précautions écologiques liées aus recyclage ci-jointes. | **DE** Bitte lesen Sie sorgfältig die Montage-Anleitung, die Sie vorder Montage des Geräts erhalten haben, Allgemeinen Geschäftsbedingungen und Umweltbewusstsein über Recycling angeschlossen. | **PT** Leia atentamente as instruções de montagem fornecidas antes de instalar o aparelho, as condições gerais de uso e preocupação ambiental com a reciclagem, em anexo. | **ES** Lea atentamente las instrucciones de montaje proporcionadas antes de instalar el aparato, las condiciones generales de uso y la preocupación medioambiental con el reciclaje, que se adjuntan.

WWW.ROXOLIGHTING.COM

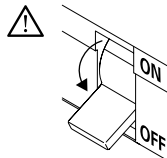
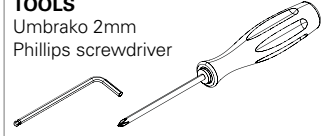
WWW.INDELAGUE.COM

IIV666/0

REBA 50 D/I EXT Line | REBA 65 D/I EXT Line

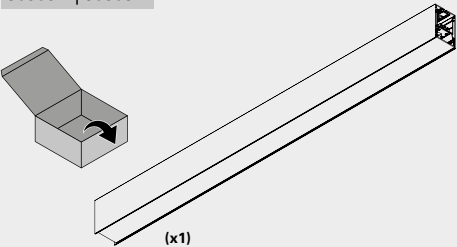
REBA 50 D/I EXT Line		REBA 65 D/I EXT Line	
START/END	MID	START/END	MID
 (mm)	 (mm)	 (mm)	 (mm)
1127x50x87	1122x50x87	1127x65x97	1122x65x97
1407x50x87	1402x50x87	1407x65x97	1402x65x97
1687x50x87	1682x50x87	1687x65x97	1682x65x97
2249x50x87	2244x50x87	2249x65x97	2244x65x97
2529x50x87	2524x50x87	2529x65x97	2524x65x97
2809x50x87	2804x50x87	2809x65x97	2804x65x97

TOOLS
Umbrako 2mm
Phillips screwdriver



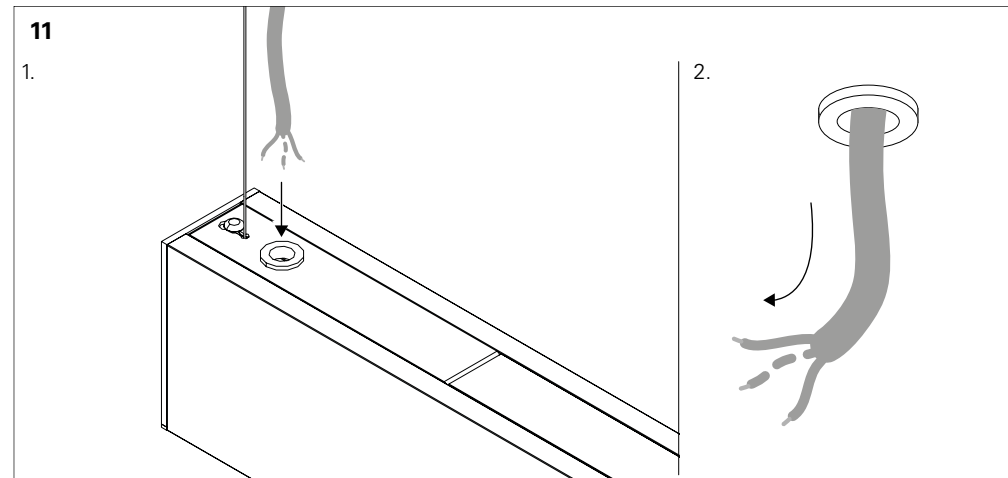
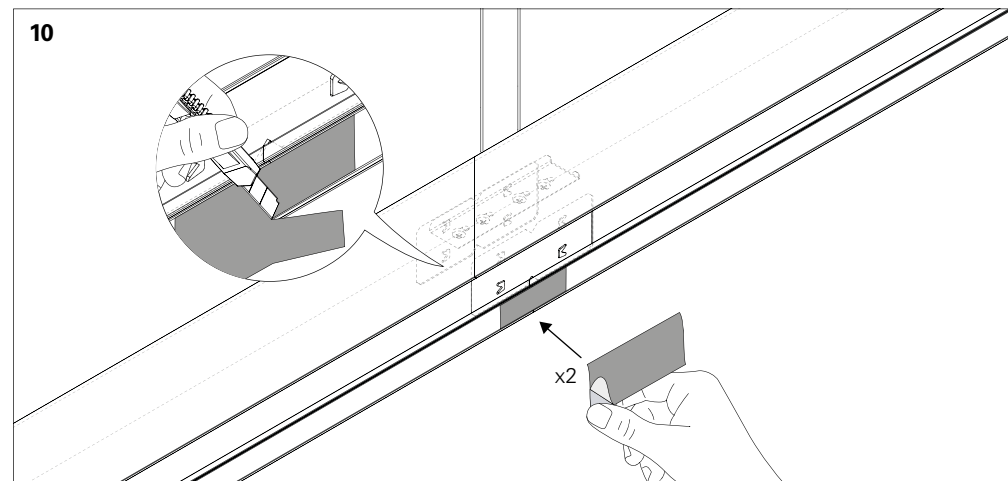
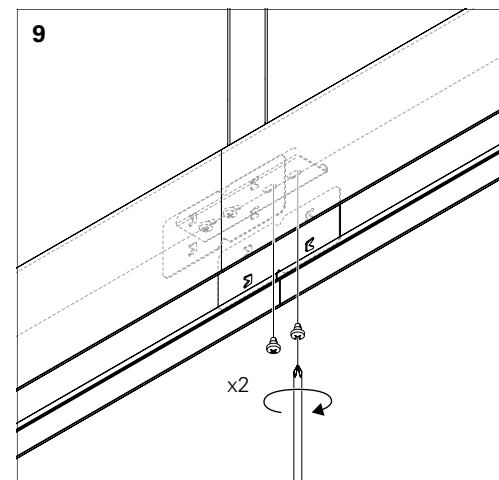
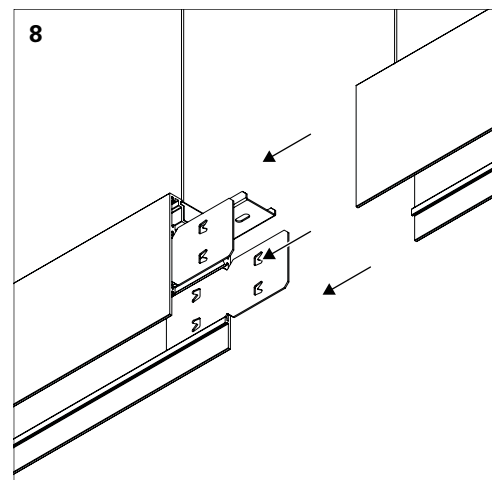
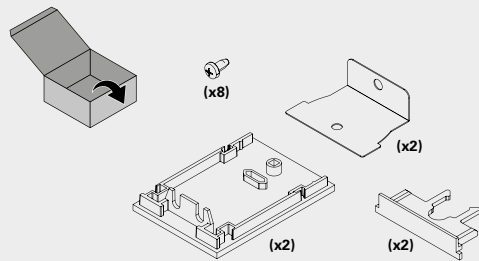
EN SURFACE MOUNTED
FR SAILLIE
DE ANBAUVERSION
PT SALIENTE
ES SUPERFICIE

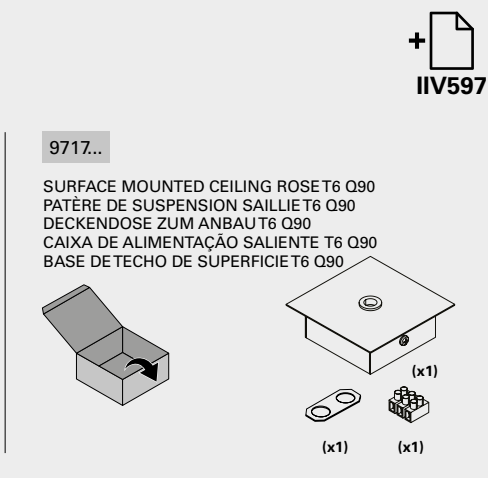
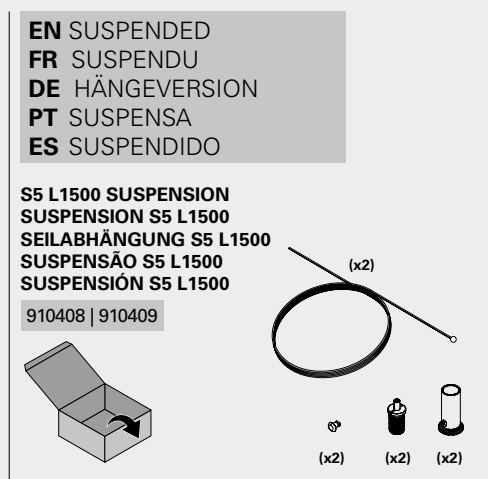
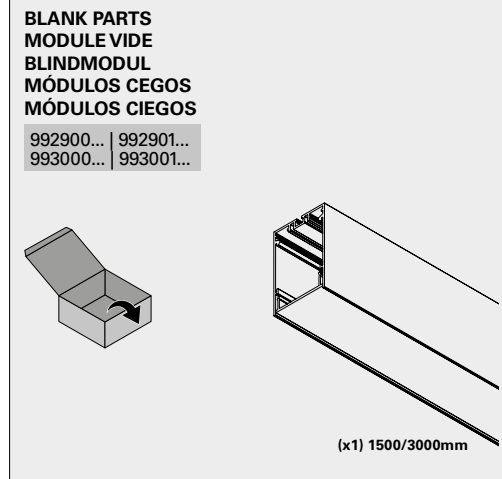
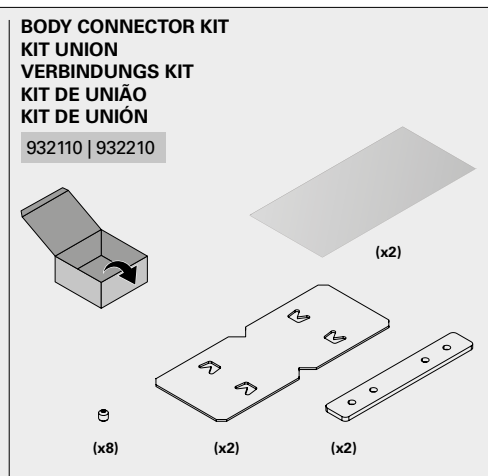
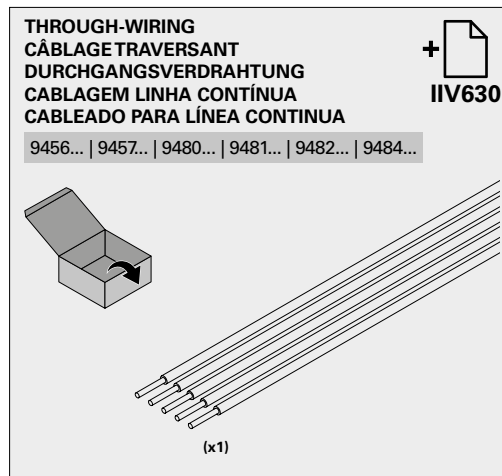
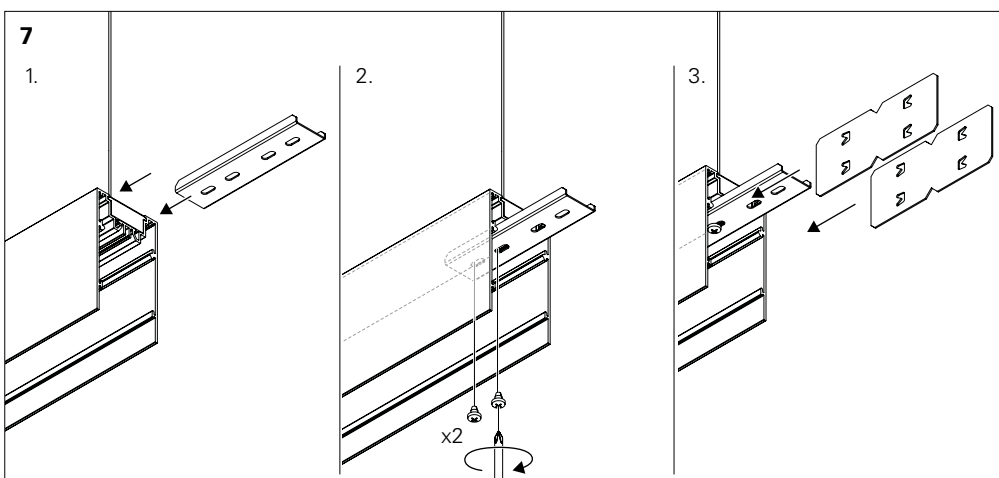
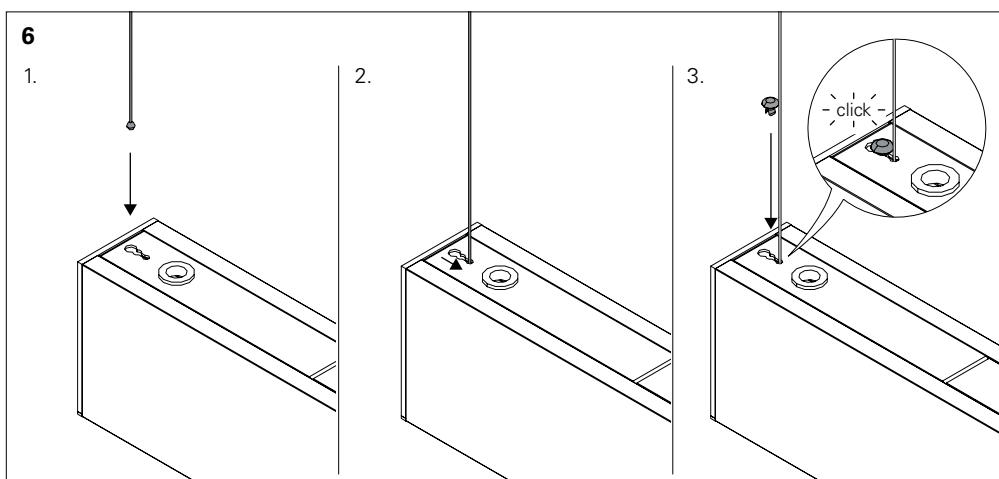
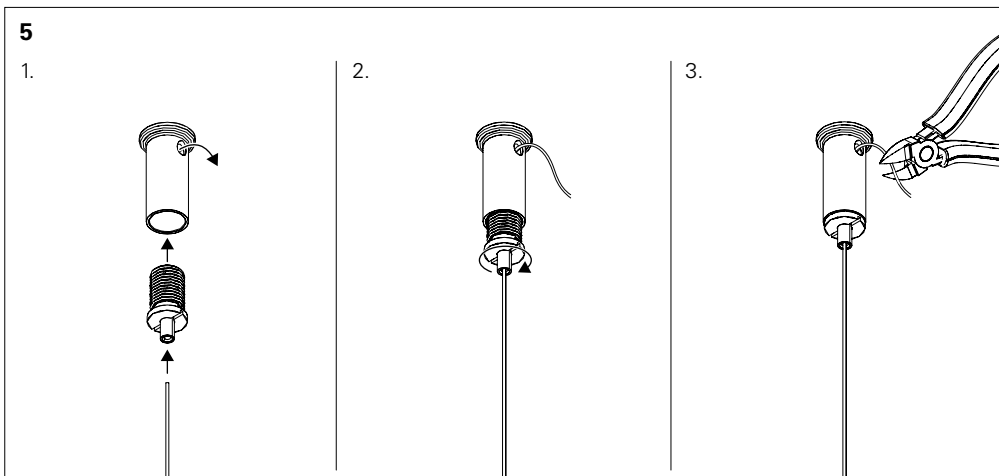
90505... | 90509...

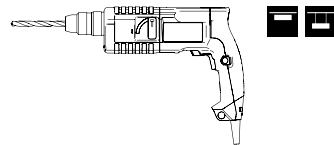


START KIT
KIT DÉBUT DE LIGNE
START KIT
START KIT
START KIT

923100... | 923500...

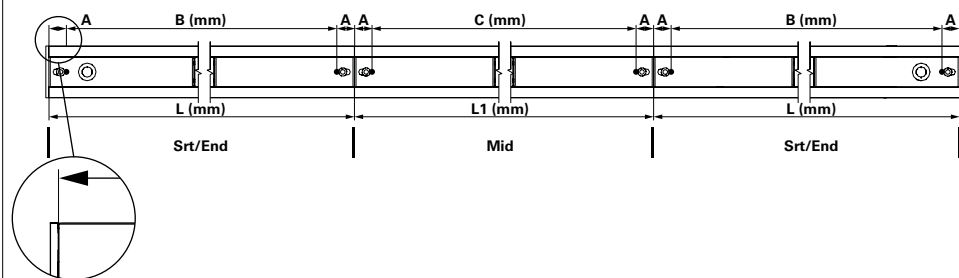




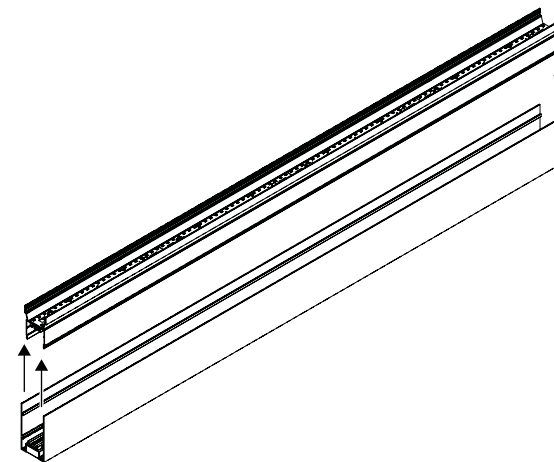


LINE (TOPVIEW)

REBA 50 D/I EXT Line REBA 65 D/I EXT Line			
L/L1	A	B	C
1127/1122	17	1093	1088
1407/1402	17	1373	1368
1687/1682	17	1653	1648
2249/2244	17	2215	2210
2529/2524	17	2495	2490
2809/2804	17	2775	2770

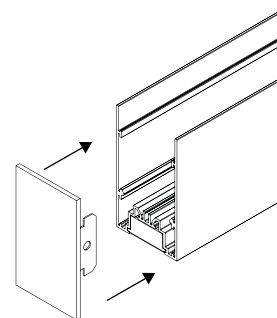


2

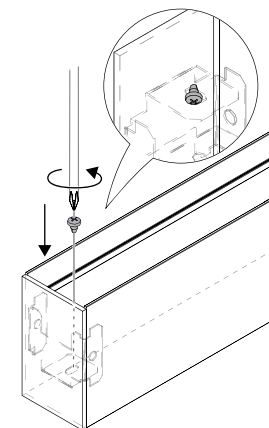


3

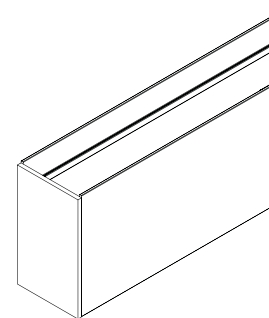
1.



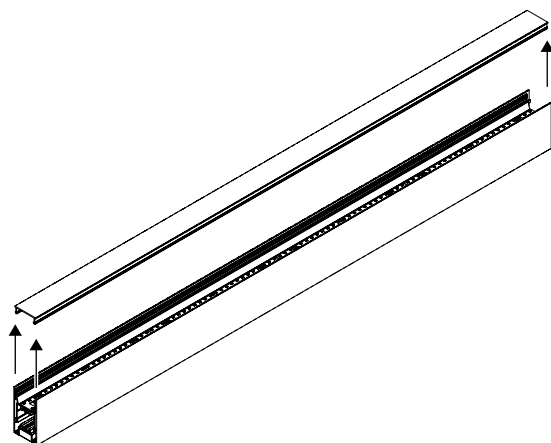
2.



3.

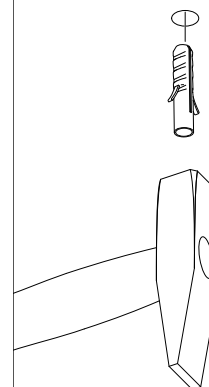


1



4

1.



2.

