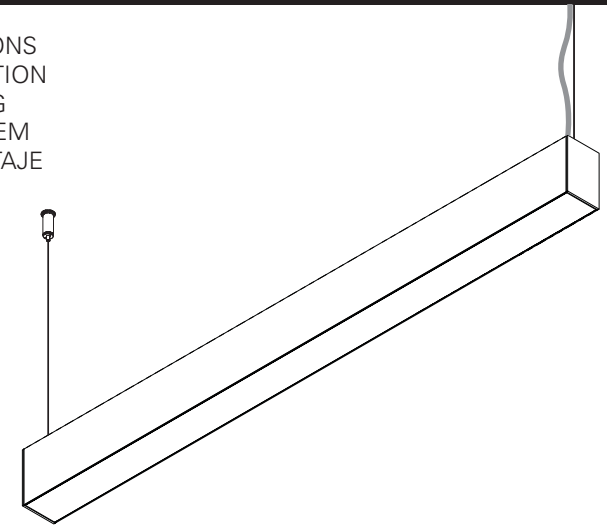
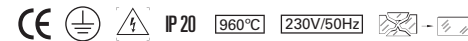


## REBA 65 D/I LED

**EN** INSTALLATION INSTRUCTIONS  
**FR** INSTRUCTIONS D'INTALLATION  
**DE** INSTALLATIONSANLEITUNG  
**PT** INSTRUÇÕES DE MONTAGEM  
**ES** INSTRUCCIONES DE MONTAJE



### REBA 65 D/I LED



**EN** WARNING: THE LIGHT SOURCE CONTAINED IN THE LUMINAIRE SHOULD BE REPLACED ONLY BY THE MANUFACTURER. DO NOT USE THIS EQUIPMENT IN AREAS CONTAINING CHEMICAL AGENTS: ACIDS, SOLVENTS, PAINTS, SILICONES, COATINGS, ETC.

**FR** AVERTISSEMENT: LA SOURCE DE LUMIÈRE CONTENUE DANS LA LUMINAIRE DOIT ÊTRE REMPLACÉE PAR LE FABRICANT. EN CAS D'ANOMALIE DÉTECTÉE, CONTACTEZ LE FABRICANT. NE PAS UTILISER L'ÉQUIPEMENT DANS LES ZONES QUI CONTIENNENT DES AGENTS CHIMIQUES: ACIDES, SOLVANTS, PEINTURES, SILICONES, VERNIS, ETC.

**DE** WARNUNG: DIE IN DER LEUCHTE ENTHALTEN LICHTQUELLE SOLLTE NUR VOM HERSTELLER ERSETZT WERDEN. VERWENDEN SIE DIESES GERÄT NICHT IN BEREICHEN MIT CHEMISCHEN MITTELN: SÄUREN, LÖSUNGSMITTEL, FARBEN, SILKONE, BESCHICHTUNGEN ETC.

**PT** ATENÇÃO: A FONTE DE LUZ CONTIDA NA LUMINÁRIA DEVE SER SUBSTITUÍDA UNICAMENTE PELO FABRICANTE. QUALQUER ANOMALIA DETECTADA CONTACTAR O FABRICANTE. NÃO UTILIZAR O EQUIPAMENTO EM ZONAS QUE CONTENHAM AGENTES QUÍMICOS: ÁCIDOS, SOLVENTES, TINTAS, SILICONES, VERNIZES, ETC.

**ES** ATENCIÓN: LA FUENTE DE LUZ CONTENIDA EN LA LUMINARIA DEBE SER SUSTITUIDA ÚNICAMENTE POR EL FABRICANTE. CUALQUIER ANOMALÍA DETECTADA CONTACTAR CON EL FABRICANTE. NO UTILIZAR

LA LUMINARIA EN ZONAS QUE CONTENGAN AGENTES QUÍMICOS: ÁCIDOS, DISOLVENTES, PINTURAS, SILICONAS, BARNICES, ETC."



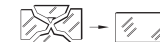
**EN** CAUTION, RISK OF ELECTRIC SHOCK.

**FR** ATTENTION, RISQUE DE CHOC ÉLECTRIQUE.

**DE** ACHTUNG, GEFAHR EINES STROMSCHLAGS.

**PT** CUIDADO, RISCO DE CHOQUE ELÉTRICO.

**ES** PRECAUCIÓN, RIESGO DE DESCARGA ELÉCTRICA.



**EN** IF GLASS OR DIFFUSER BREAK OR CRACK, PLEASE REPLACE IT.

**FR** EN CAS DE CASSE OU FISSUREMENT, REMPLACEZ LE VERRE OU DIFFUSEUR.

**DE** BEI BRUCH ODER RISS, GLAS ODER DIFFUSER ERSETZEN.

**PT** EM CASO DE QUEBRA OU FISSURA, SUBSTITUIR O VIDRO OU DIFUSOR.

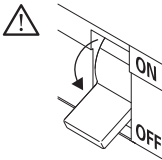
**ES** EN CASO DE ROTURA O FISURA, SUSTITUIR EL VIDRIO O DIFUSOR.



**EN** Read carefully the general terms and conditions of use and environmental concern with recycling attached. | **FR** Lire attentivement les conditions générales d'utilisations et de préoccupation environnementales avec les recyclage ci-joint. | **DE** Bitte lesen Sie de Allgemeinen Geschäftsbedingungen und Umweltbewusstsein über Recycling angeschlossen. | **PT** Ler atentamente as condições gerais de uso e preocupação ambiental com a reciclagem, em anexo. | **ES** Lea atentamente las condiciones generales de uso y preocupación ambiental con el reciclaje adjuntos.

**EN** We reserve the right to make changes on technical specifications, design and installation leaflet without prior notice. | **FR** Sous réserve de modifications au niveau de la conception, des spécifications techniques et de la notice. | **DE** Änderungen von Entwurf, technischen Daten und Bedienungsanleitungen bleiben vorbehalten. | **PT** O fabricante reserva-se no direito de realizar modificações no desenho, especificações técnicas e folheto, sem aviso prévio. | **ES** El fabricante se reserva el derecho de realizar modificaciones en el diseño, las especificaciones técnicas y el folleto.

REBA 65 D/I LED



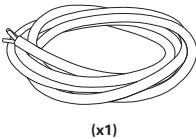
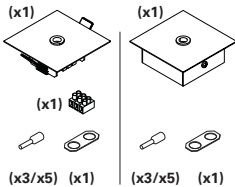
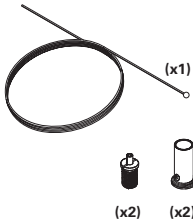
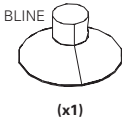
ACCESSORIES  
ACCESSOIRES  
ZUBEHÖR  
ACESSÓRIOS  
ACCESORIOS

SUSPENSION  
SUSPENSION  
AUFHÄNGUNG  
SUSPENSÃO  
SUSPENSIÓN

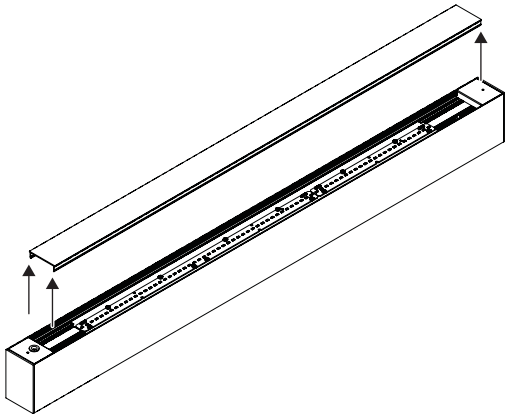
CEILING ROSE  
PATÈRE DE SUSPENSION  
DECKENBALDACHIN  
CAIXA DE ALIMENTAÇÃO  
BASE DETECHO

CURRENT SUPPLY CABLE  
CÂBLE D'ALIMENTATION  
EINSPEISUNGSKABEL  
CABO DE ALIMENTAÇÃO  
CABLE DE ALIMENTACIÓN

Recessed or surface mounted  
Encastré ou en saillie  
Vertieft oder hervorstehe  
Encastrar ou saliente  
Empotrar o superficie

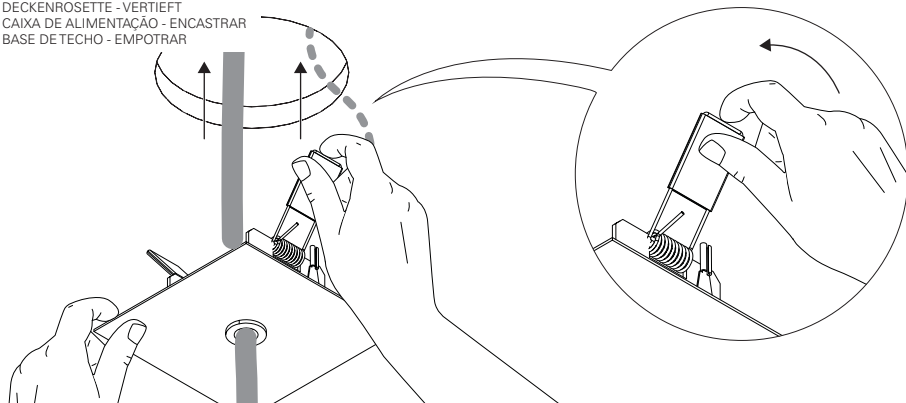


1 - REBA 65 D/I LED



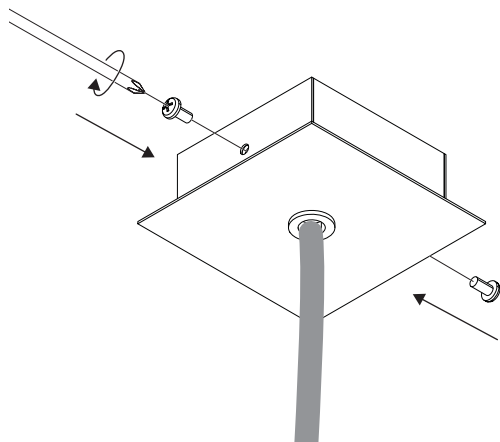
## 18 - REBA 65 D/I LED

CEILING ROSE - RECESSED  
PATÈRE DE SUSPENSION - ENCASTRÉ  
DECKENROSETTE - VERTIEFT  
CAIXA DE ALIMENTAÇÃO - ENCASTRAR  
BASE DE TETO - EMPOTRAR

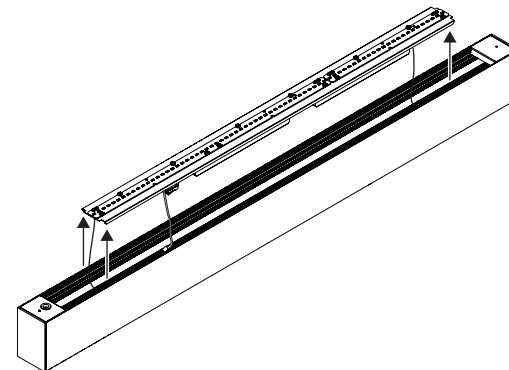


## 19 - REBA 65 D/I LED

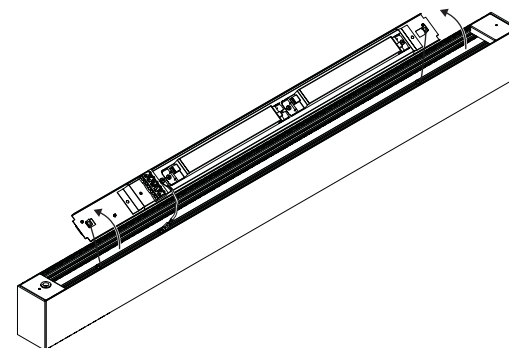
CEILING ROSE - SURFACE MOUNTED  
PATÈRE DE SUSPENSION - SAILLIE  
DECKENROSETTE - AUFPUTZ  
CAIXA DE ALIMENTAÇÃO - SALIENTE  
BASE DE TETO - SUPERFICIE



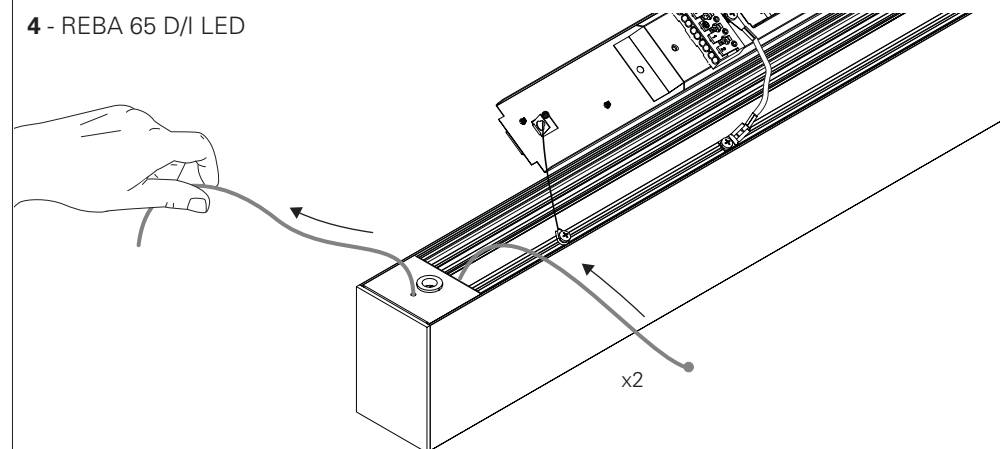
## 2 - REBA 65 D/I LED



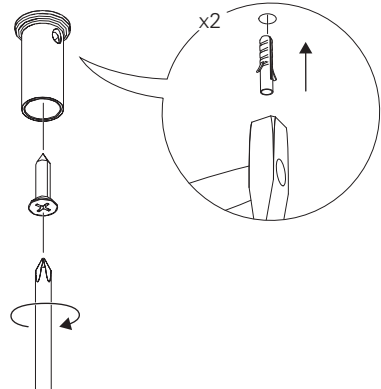
## 3 - REBA 65 D/I LED



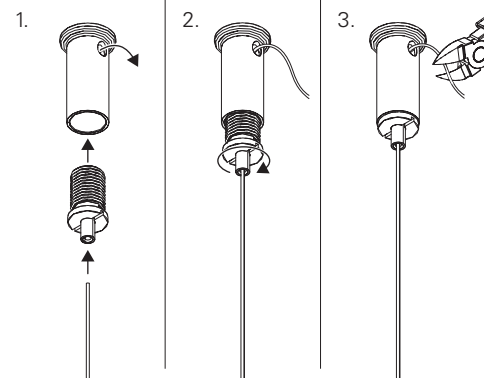
## 4 - REBA 65 D/I LED



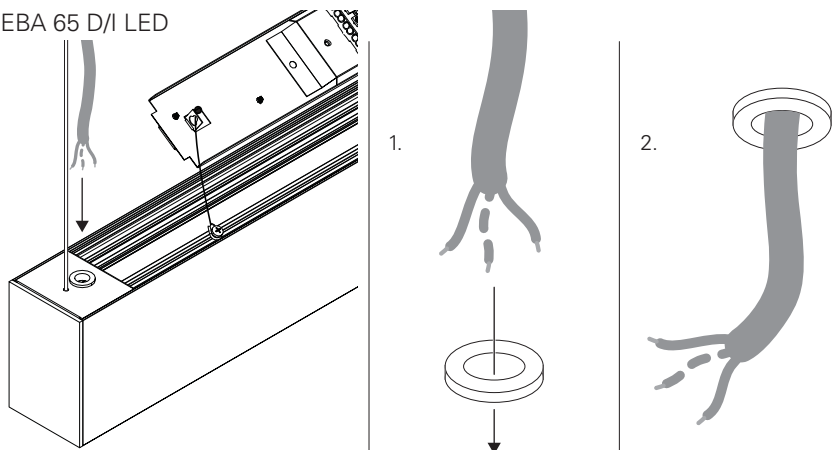
# 5 - REBA 65 D/I LED



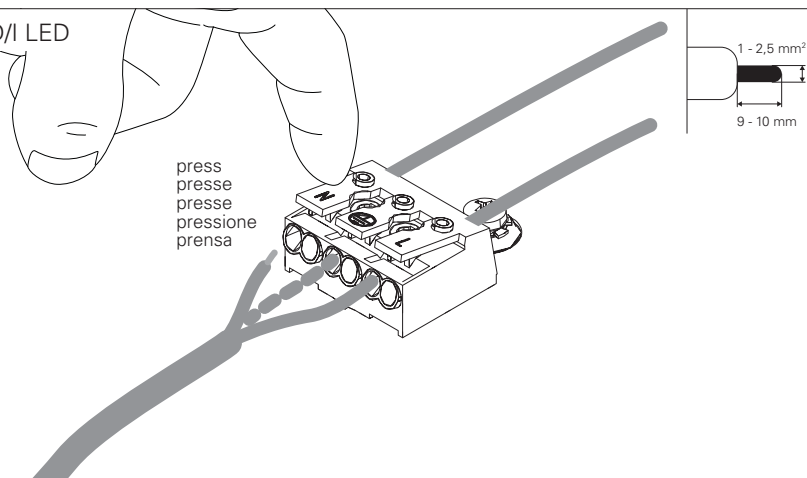
# 6 - REBA 65 D/I LED



# 7 - REBA 65 D/I LED

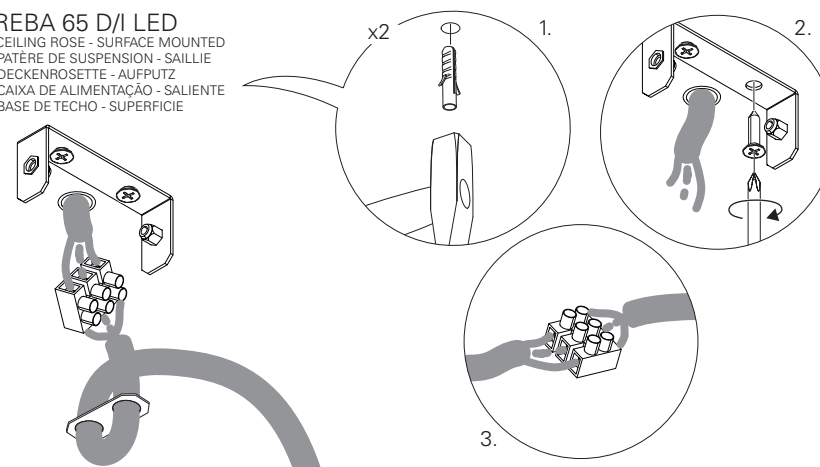


# 8 - REBA 65 D/I LED



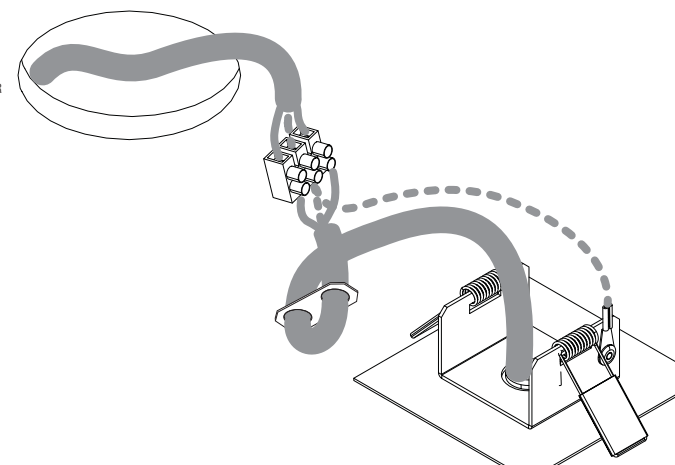
# 17 - REBA 65 D/I LED

CEILING ROSE - SURFACE MOUNTED  
PATÈRE DE SUSPENSION - SAILLIE  
DECKENROSETTE - AUFPUTZ  
CAIXA DE ALIMENTAÇÃO - SALIENTE  
BASE DE TETO - SUPERFICIE



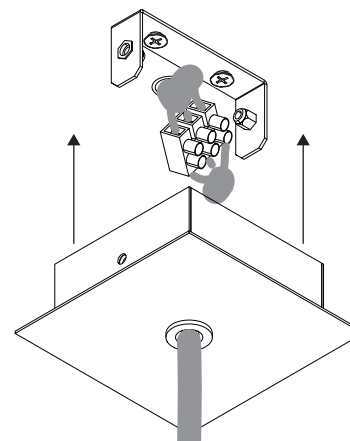
# 17 - REBA 65 D/I LED

CEILING ROSE - RECESSED  
PATÈRE DE SUSPENSION - ENCASTRÉ  
DECKENROSETTE - VERTIEFT  
CAIXA DE ALIMENTAÇÃO - ENCASTRAR  
BASE DE TETO - EMPOTRAR



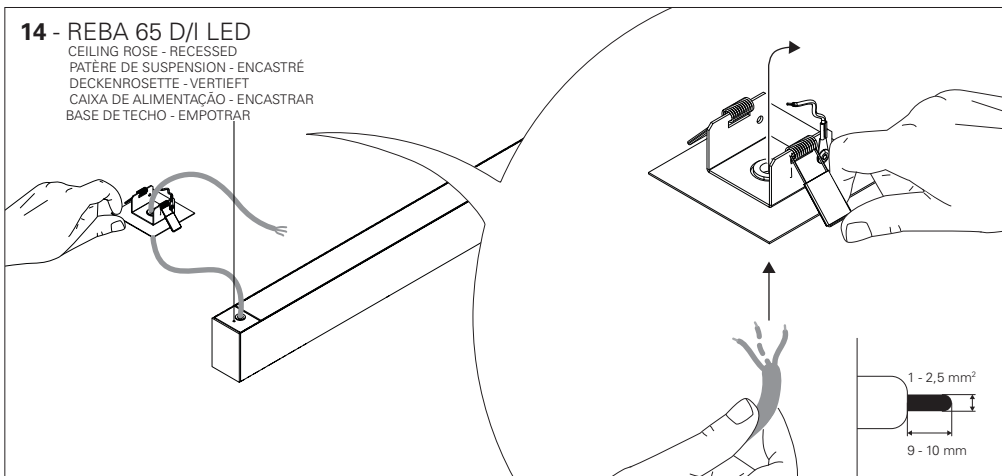
# 18 - REBA 65 D/I LED

CEILING ROSE - SURFACE MOUNTED  
PATÈRE DE SUSPENSION - SAILLIE  
DECKENROSETTE - AUFPUTZ  
CAIXA DE ALIMENTAÇÃO - SALIENTE  
BASE DE TETO - SUPERFICIE

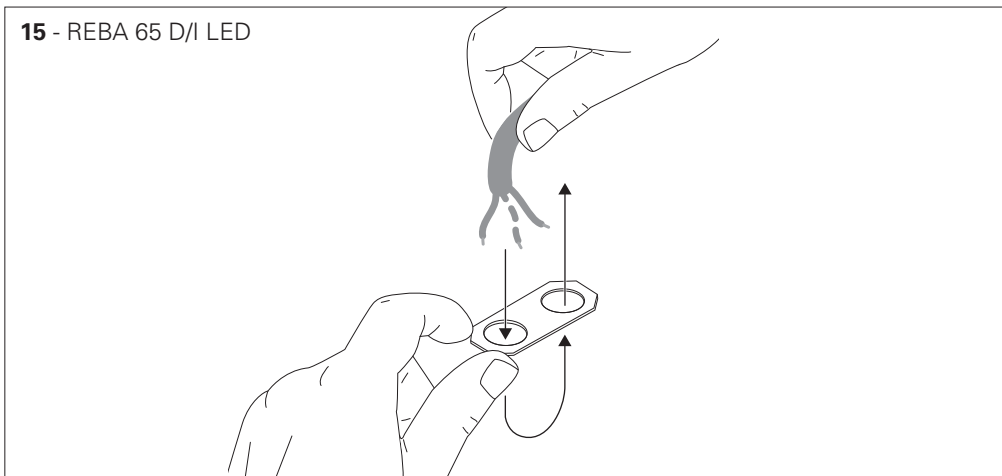


# 14 - REBA 65 D/I LED

CEILING ROSE - RECESSED  
PATÈRE DE SUSPENSION - ENCASTRÉ  
DECKENROSETTE - VERTIEFT  
CAIXA DE ALIMENTAÇÃO - ENCASTRAR  
BASE DE TECTO - EMPOTRAR

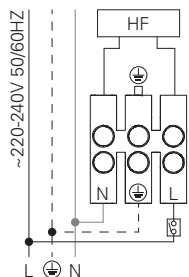


# 15 - REBA 65 D/I LED



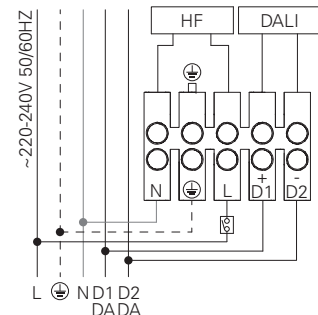
# 16 - REBA 65 D/I LED HF

STANDARD POWER SUPPLY  
CÂBLAGE STRANDARD  
STANDARD VERDRAHTUNG  
ALIMENTAÇÃO ELÉCTRICA STANDARD  
ELECTRIFICACIÓN ESTÁNDAR



## DALI

DIMMABLE POWER SUPPLY  
CÂBLAGE AVEC GRADATION  
DIMMBARE VERDRAHTUNG  
ALIMENTAÇÃO ELÉCTRICA COM REGULAÇÃO  
ELECTRIFICACIÓN CON REGULACIÓN



BLUE - N (NEUTRAL)  
GREEN AND YELLOW - (EARTH)  
BROWN - L (LIVE)  
GREY - D1+  
BLACK - D2-

BLEU - N (NEUTRE)  
VERT ET JAUNE - (TERRE)  
MARRON - L (PHASE)  
GRIS - D1+  
NOIR - D2-

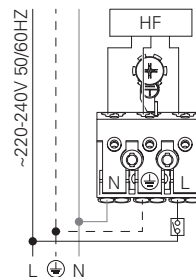
BLAU - N (NEUTRAL)  
GRÜN UND GELB - (ERDE)  
BRAUN - L (PHASE)  
GRAU - D1+  
SCHWARZ - D2-

AZUL - N (NEUTRO)  
VERDE E AMARELO - (TIERRA)  
CASTANHO - L (FASE)  
CINZA - D1+  
PRETO - D2-

AZUL - N (NEUTRAL)  
VERDE Y AMARILLO - (TIERRA)  
MARRÓN - L (FASE)  
GRIS - D1+  
NEGRO - D2-

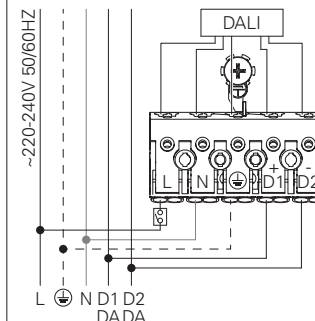
# 9 - REBA 65 D/I LED HF

STANDARD POWER SUPPLY  
CÂBLAGE STRANDARD  
STANDARD VERDRAHTUNG  
ALIMENTAÇÃO ELÉCTRICA STANDARD  
ELECTRIFICACIÓN ESTÁNDAR



## DALI

DIMMABLE POWER SUPPLY  
CÂBLAGE AVEC GRADATION  
DIMMBARE VERDRAHTUNG  
ALIMENTAÇÃO ELÉCTRICA COM REGULAÇÃO  
ELECTRIFICACIÓN CON REGULACIÓN



BLUE - N (NEUTRAL)  
GREEN AND YELLOW - (EARTH)  
BROWN - L (LIVE)  
GREY - D1+  
BLACK - D2-

BLEU - N (NEUTRE)  
VERT ET JAUNE - (TERRE)  
MARRON - L (PHASE)  
GRIS - D1+  
NOIR - D2-

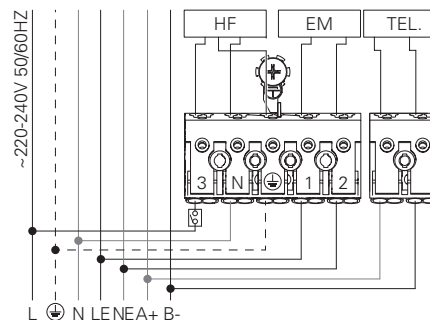
BLAU - N (NEUTRAL)  
GRÜN UND GELB - (ERDE)  
BRAUN - L (PHASE)  
GRAU - D1+  
SCHWARZ - D2-

AZUL - N (NEUTRO)  
VERDE E AMARELO - (TIERRA)  
CASTANHO - L (FASE)  
CINZA - D1+  
PRETO - D2-

AZUL - N (NEUTRAL)  
VERDE Y AMARILLO - (TIERRA)  
MARRÓN - L (FASE)  
GRIS - D1+  
NEGRO - D2-

# 9.1 - REBA 65 D/I LED HF + EM + TEL.

POWER SUPPLY HF WITH EMERGENCY KIT AND TELECOMMAND  
CÂBLAGE HF AVEC UNITE DE SECOURS ET TELECOMMANDE  
VERDRAHTUNG FÜR HF MIT NOTLICHTENSATZ UND TELEKOMMAND  
ALIMENTAÇÃO ELÉCTRICA HF COM KIT EMERGÊNCIA E TELECOMANDO  
ELECTRIFICACIÓN HF CON KIT DE EMERGENCIA Y TELEMANDABLE



BLUE - N (NEUTRAL)  
GREEN AND YELLOW - (EARTH)  
BROWN - L (LIVE)  
GREY - LE (EMERGENCY LIVE)  
BLACK - NE (EMERGENCY NEUTRAL)  
RED - A+  
BLACK - B-

BLEU - N (NEUTRE)  
VERT ET JAUNE - (TERRE)  
MARRON - L (PHASE)  
GRIS - LE (UNI. SECOURS PHASE)  
NOIR - NE (UNI. SECOURS NEUTRE)  
ROUGE - A+  
NOIR - B-

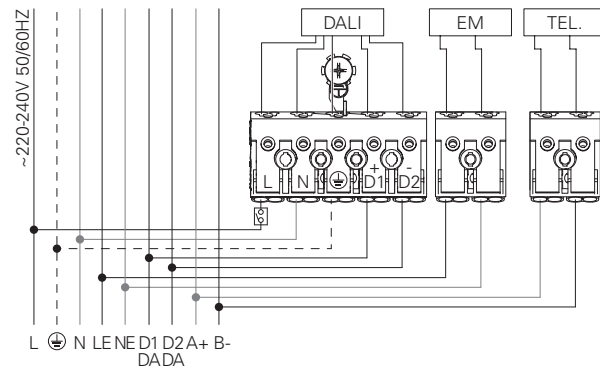
BLAU - N (NEUTRAL)  
GRÜN UND GELB - (ERDE)  
BRAUN - L (PHASE)  
GRAU - LE (NOTLICHT PHASE)  
SCHWARZ - NE (NOTLICHT NEUTRAL)  
ROT - A+  
SCHWARZ - B-

AZUL - N (NEUTRO)  
VERDE E AMARELO - (TIERRA)  
CASTANHO - L (FASE)  
CINZA - LE (EMERGENCIA FASE)  
PRETO - NE (EMERGENCIA NEUTRO)  
VERMELHO - A+  
PRETO - B-

AZUL - N (NEUTRAL)  
VERDE Y AMARILLO - (TIERRA)  
MARRÓN - L (FASE)  
GRIS - LE (EMERGENCIA FASE)  
NEGRO - NE (EMERGENCIA NEUTRAL)  
ROJO - A+  
NEGRO - B-

## 9.2 - REBA 65 D/I LED DALI + EM + TEL.

POWER SUPPLY HF WITH EMERGENCY KIT AND TELECOMMAND  
CABLAGE HF AVEC UNITE DE SECOURS ET TELECOMMANDE  
VERDRAHTUNG FÜR HF MIT NOTLICHTEINSATZ UND TELEKOMMAND  
ALIMENTAÇÃO ELÉCTRICA HF COM KIT EMERGÊNCIA E TELECOMANDO  
ELECTRIFICACIÓN HF CON KIT DE EMERGENCIA Y TELEMANDABLE



BLUE - N (NEUTRAL)  
GREEN AND YELLOW - ⊕ (EARTH)  
BROWN - L (LIVE)  
GREY - D1+  
BLACK - D2-  
BLUE - NE (EMERGENCY NEUTRAL)  
BROWN - LE (EMERGENCY LIVE)  
RED - A+  
BLACK - B-

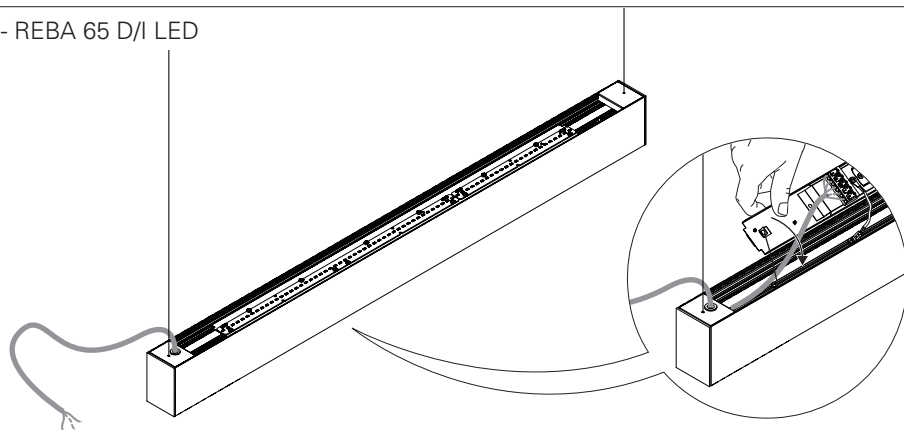
BLEU - N (NEUTRE)  
VERT ET JAUNE - ⊕ (TERRE)  
MARRON - L (PHASE)  
GRIS - D1+  
NOIR - D2-  
BLEU - NE (UNI. SECOURS NEUTRE)  
MARRON - LE (UNI. SECOURS PHASE)  
ROUGE - A+  
NOIR - B-

BLAU - N (NEUTRAL)  
GRÜN UND GELB - ⊕ (ERDE)  
BRAUN - L (PHASE)  
GRAU - D1+  
SCHWARZ - D2-  
BLAU - NE (NOTLICHT NEUTRAL)  
BRAUN - LE (NOTLICHT PHASE)  
ROT - A+  
SCHWARZ - B-

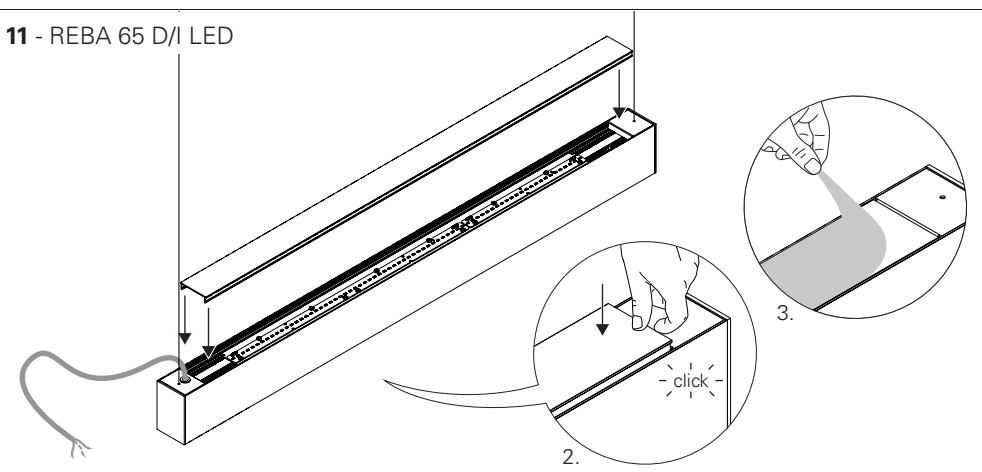
AZUL - N (NEUTRO)  
VERDE E AMARELO - ⊕ (TERRA)  
CASTANHO - L (FASE)  
CINZA - D1+  
PRETO - D2-  
AZUL - NE (EMERGÊNCIA NEUTRO)  
CASTANHO - LE (EMERGÊNCIA FASE)  
VERMELHO - A+  
PRETO - B-

AZUL - N (NEUTRAL)  
VERDE Y AMARILLO - ⊕ (TIERRA)  
MARRÓN - L (FASE)  
GRIS - D1+  
NEGRO - D2-  
AZUL - NE (EMERGENCIA NEUTRAL)  
MARRÓN - LE (EMERGENCIA FASE)  
ROJO - A+  
NEGRO - B-

## 10 - REBA 65 D/I LED

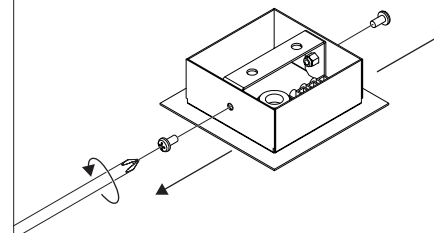


## 11 - REBA 65 D/I LED



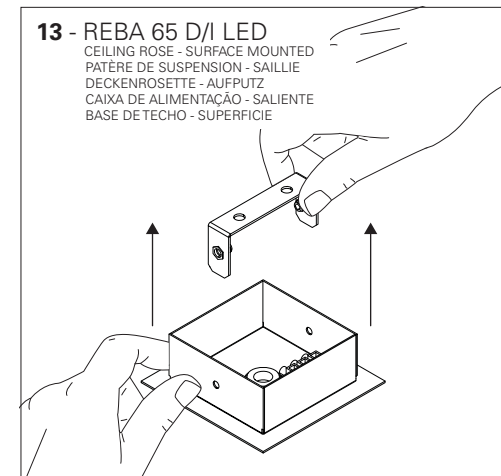
## 12 - REBA 65 D/I LED

CEILING ROSE - SURFACE MOUNTED  
PATÈRE DE SUSPENSION - SAILLIE  
DECKENROSETTE - AUFPUTZ  
CAIXA DE ALIMENTAÇÃO - SALIENTE  
BASE DE TECTO - SUPERFICIE



## 13 - REBA 65 D/I LED

CEILING ROSE - SURFACE MOUNTED  
PATÈRE DE SUSPENSION - SAILLIE  
DECKENROSETTE - AUFPUTZ  
CAIXA DE ALIMENTAÇÃO - SALIENTE  
BASE DE TECTO - SUPERFICIE



## 14 - REBA 65 D/I LED

CEILING ROSE - SURFACE MOUNTED  
PATÈRE DE SUSPENSION - SAILLIE  
DECKENROSETTE - AUFPUTZ  
CAIXA DE ALIMENTAÇÃO - SALIENTE  
BASE DE TECTO - SUPERFICIE

