

INDELAGUE™
HIGH TECH | LIGHTING SOLUTIONS

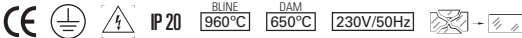


MADE IN
PORTUGAL

REBA 65 LED Line (SUSPENDED | SUSPENDU | PENDELVERSION | SUSPENSÁ | SUSPENDIDO)

EN INSTALLATION INSTRUCTIONS
FR INSTRUCTIONS D'INTALLATION
DE INSTALLATIONSANLEITUNG
PT INSTRUÇÕES DE MONTAGEM
ES INSTRUCCIONES DE MONTAJE

REBA 65 LED Line



EN Warning: The light source contained in the luminaire should be replaced only by the manufacturer. Do not use this equipment in areas containing chemical agents: acids, solvents, paints, silicones, coatings, etc.
FR Attention, risque de choc électrique.
DE Achtung, Gefahr eines Stromschlags.
PT Cuidado, risco de choque elétrico.
ES Precaución, riesgo de descarga eléctrica.

EN If glass or diffuser break or crack, please replace it.
FR En cas de casse ou fissurement, remplacez le verre ou diffuseur.
DE Bei Bruch oder Riss, Glas oder Diffuser ersetzen.
PT Em caso de quebra ou fissura, substituir o vidro ou difusor.
ES En caso de rotura o fisura, sustituir el vidrio o difusor.

EN Read carefully the general terms and conditions of use and environmental concern with recycling attached. | **FR** Lire attentivement les conditions générales d'utilisations et de préoccupation environnementales avec les recyclage ci-joint. | **DE** Bitte lesen Sie de Allgemeinen Geschäftsbedingungen und Umweltbewusstsein über Recycling angeschlossen. | **PT** Ler atentamente as condições gerais de uso e preocupação ambiental com a reciclagem, em anexo. | **ES** Lea atentamente las condiciones generales de uso y preocupación ambiental con el reciclaje adjuntos.

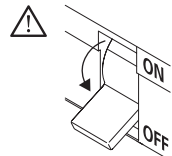
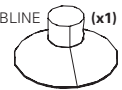
EN We reserve the right to make changes on technical specifications, design and installation leaflet without prior notice. | **FR** Sous réserve de modifications au niveau de la conception, des spécifications techniques et de la notice. | **DE** Änderungen von Entwurf, technischen Daten und Bedienungsanleitungen bleiben vorbehalten. | **PT** O fabricante reserva-se no direito de realizar modificações no desenho, especificações técnicas e folheto, sem aviso prévio. | **ES** El fabricante se reserva el derecho de realizar modificaciones en el diseño, las especificaciones técnicas y el folleto.

REBA 65 LED Line

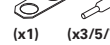
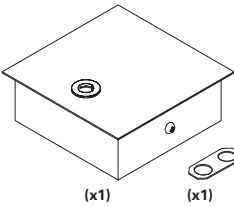
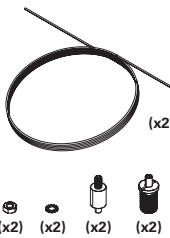


EN SUSPENDED VERSION
FR VERSION SUSPENDU
DE PENDELVERSION
PT VERSÃO SUSPENS
ES VERSIÓN SUSPENDIDO

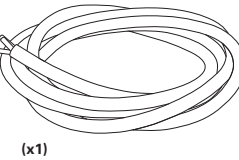
EN Accessories
FR Accessoires
DE Zubehör
PT Acessórios
ES Accesorios



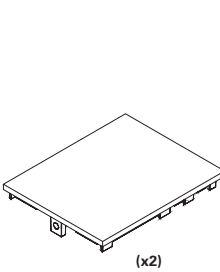
SUSPENSION OPTION
OPTION SUSPENSION
OPTIONEN AUFHÄNGUNG
OPÇÃO SUSPENSÃO
OPCIÓN SUSPENSIÓN



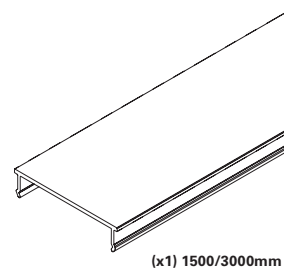
(x3/5/7)



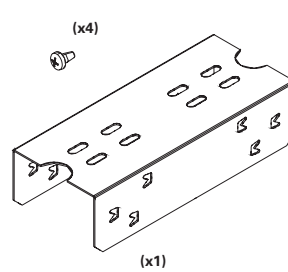
START KIT OPTION
OPTION KIT DÉBUT DE LIGNE
OPTION START KIT
OPÇÃO START KIT
OPCIÓN START KIT



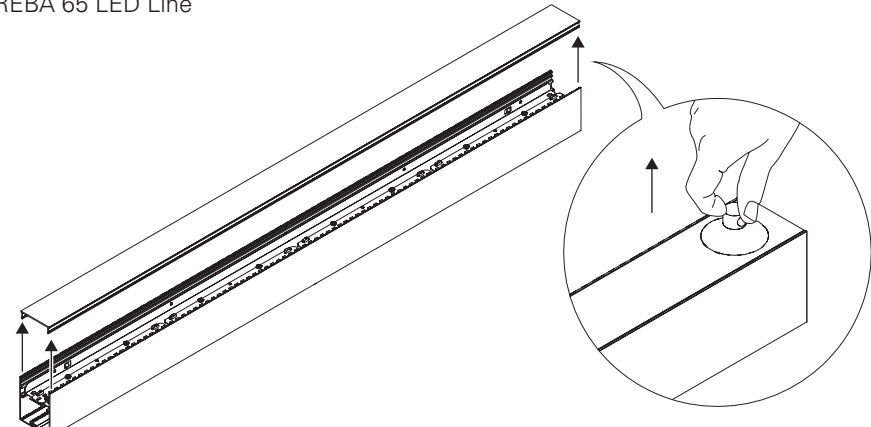
BLANK PARTS OPTION
OPTION MODULE VIDE
OPTION BLINDMODUL
OPÇÃO MÓDULOS CEGOS
OPCIÓN MÓDULOS CIEGOS



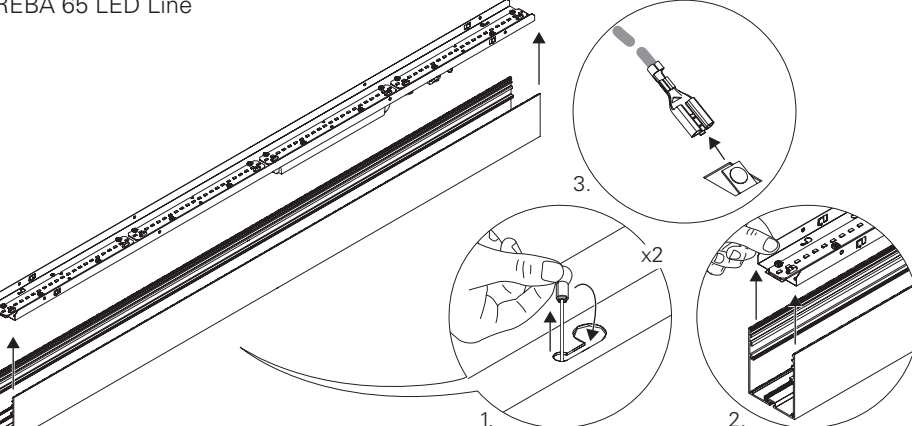
BODY CONNECTOR KIT OPTION
OPTION KIT UNION
OPTION VERBINDUNGS KIT
OPÇÃO KIT DE UNIÃO
OPCIÓN KIT DE UNIÓN



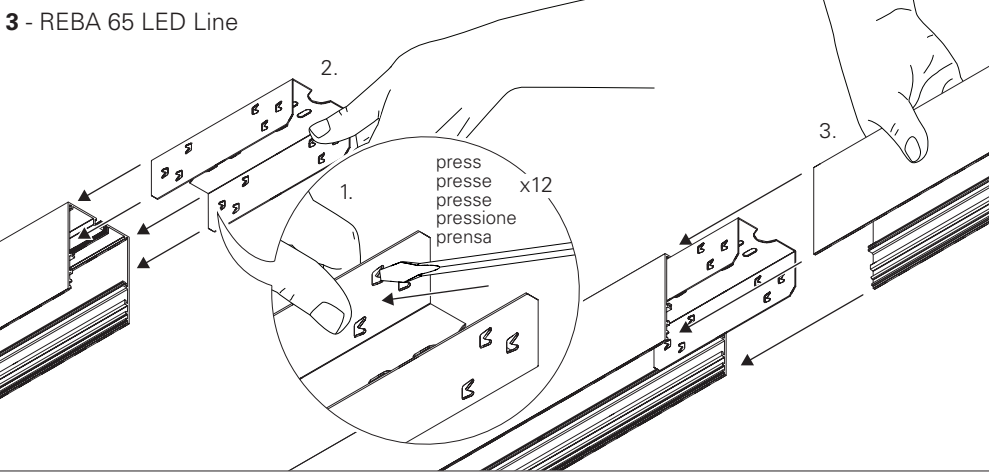
1 - REBA 65 LED Line



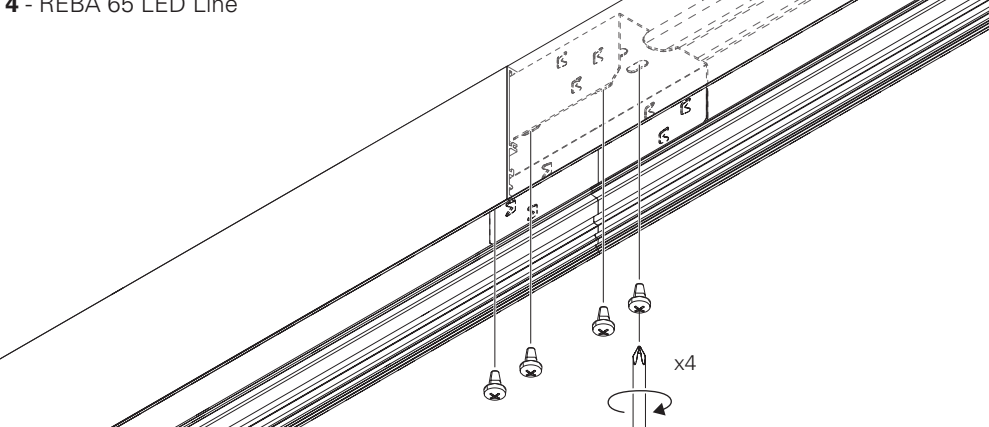
2 - REBA 65 LED Line



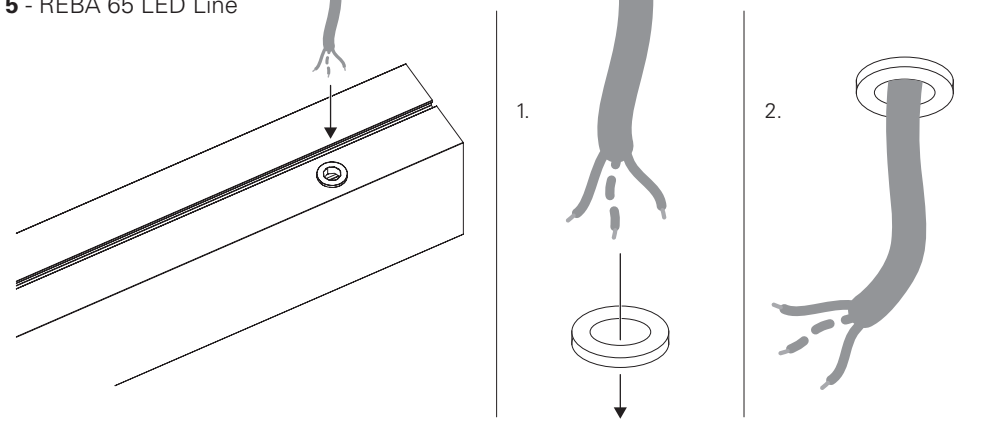
3 - REBA 65 LED Line



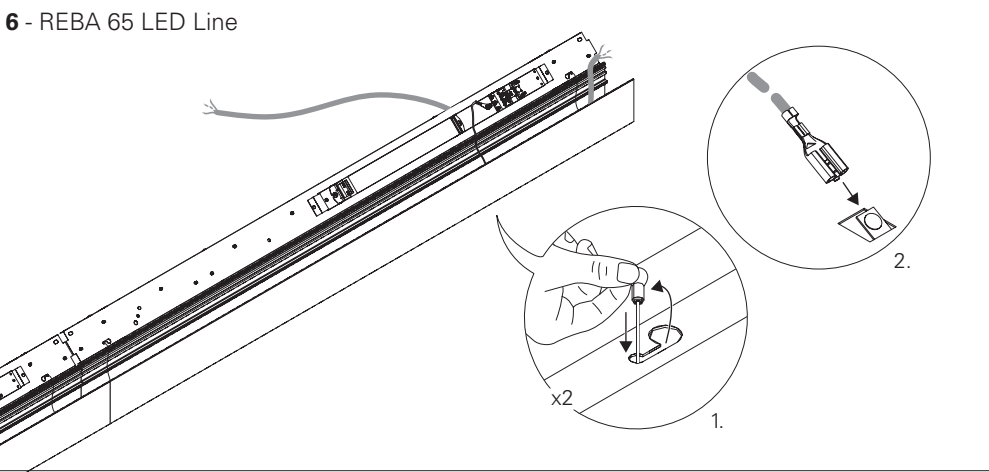
4 - REBA 65 LED Line



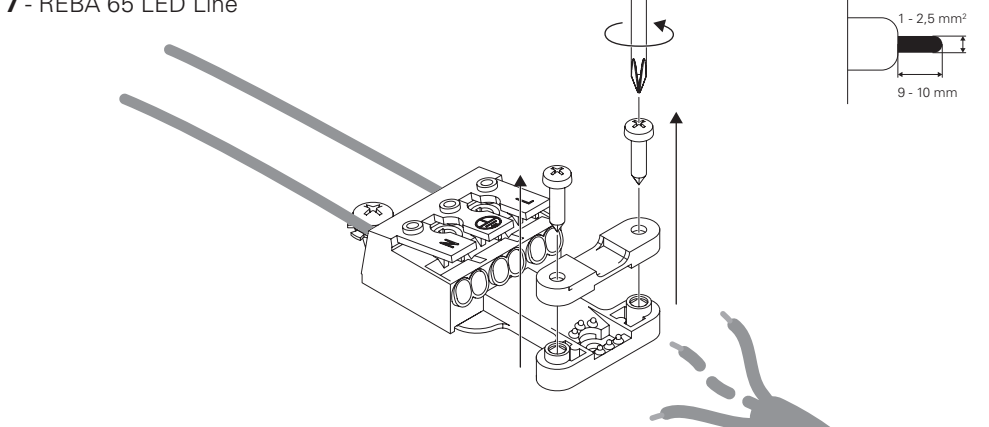
5 - REBA 65 LED Line



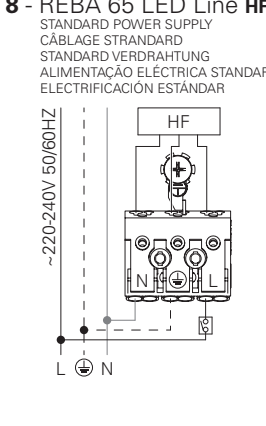
6 - REBA 65 LED Line



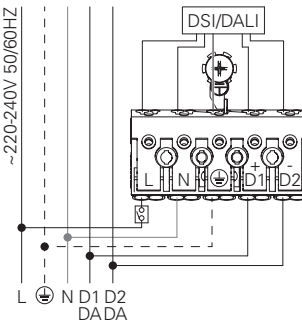
7 - REBA 65 LED Line



8 - REBA 65 LED Line HF



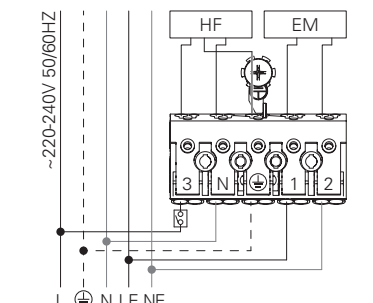
DSI/DALI
DIMMABLE POWER SUPPLY
CÂBLAGE AVEC GRADATION
STANDARD VERDRÄHTUNG
ALIMENTAÇÃO ELÉCTRICA STANDARD
ELECTRIFICACIÓN STANDARD



BLUE - N (NEUTRAL)
GREEN AND YELLOW - (EARTH)
BROWN - L (LIVE)
GREY - D1+
BLACK - D2-
BLEU - N (NEUTRE)
VERT ET JAUNE - (TERRE)
MARRON - L (PHASE)
GRIS - D1+
NOIR - D2-
BLAU - N (NEUTRAL)
GRÜN UND GELB - (ERDE)
BRAUN - L (PHASE)
GRAU - D1+
SCHWARZ - D2-
AZUL - N (NEUTRO)
VERDE E AMARELO - (TIERRA)
CASTAÑO - L (FASE)
CINZA - D1+
PRETO - D2-
AZUL - N (NEUTRAL)
VERDE Y AMARILLO - (TIERRA)
MARRÓN - L (FASE)
GRIS - D1+
NEGRO - D2-

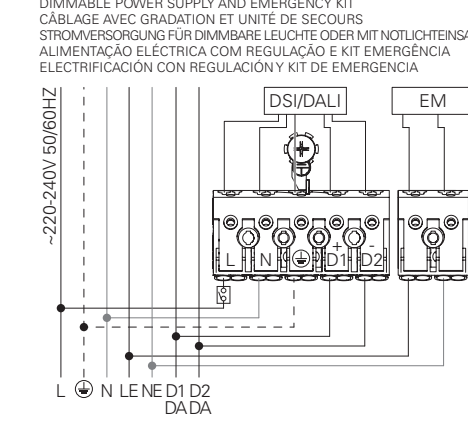
8 - REBA 65 LED Line HF + EM

POWER SUPPLY HF WITH EMERGENCY KIT
CÂBLAGE HF AVEC UNITÉ DE SECOURS
VERDRÄHTUNG FÜR HF MIT NOTLICHTENSATZ
ALIMENTAÇÃO ELÉCTRICA HF COM KIT DE EMERGENCIA
ELECTRIFICACIÓN HF CON KIT DE EMERGENCIA



BLUE - N (NEUTRAL)
GREEN AND YELLOW - (EARTH)
BROWN - L (LIVE)
GREY - LE (EMERGENCY LIVE)
BLACK - NE (EMERGENCY NEUTRAL)
BLEU - N (NEUTRE)
VERT ET JAUNE - (TERRE)
MARRON - L (PHASE)
GRIS - LE (UNI. SECOURS PHASE)
NOIR - NE (UNI. SECOURS NEUTRE)
BLAU - N (NEUTRAL)
GRÜN UND GELB - (ERDE)
BRAUN - L (PHASE)
GRAU - LE (NOTLICHT PHASE)
SCHWARZ - NE (NOTLICHT NEUTRAL)
AZUL - N (NEUTRO)
VERDE E AMARELO - (TIERRA)
CASTAÑO - L (FASE)
CINZA - LE (EMERGENCIA FASE)
PRETO - NE (EMERGENCIA NEUTRO)
AZUL - N (NEUTRAL)
VERDE Y AMARILLO - (TIERRA)
MARRÓN - L (FASE)
GRIS - LE (EMERGENCIA FASE)
NEGRO - NE (EMERGENCIA NEUTRAL)

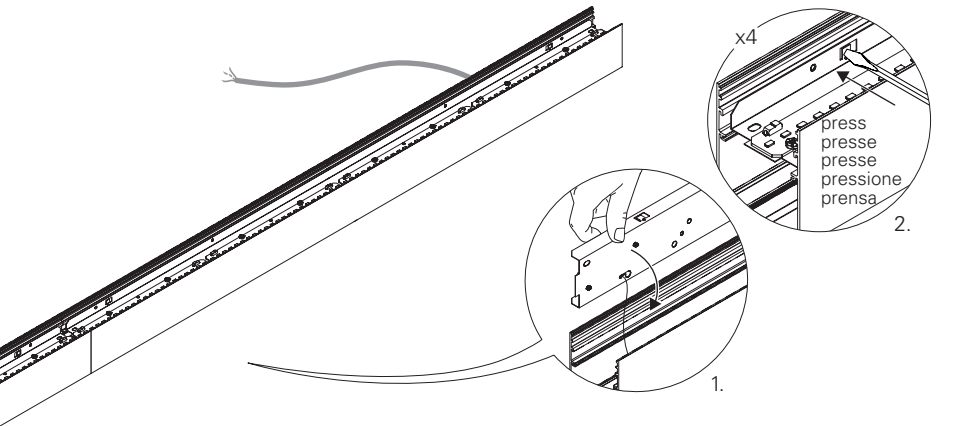
8 - REBA 65 LED Line DSI/DALI + EM



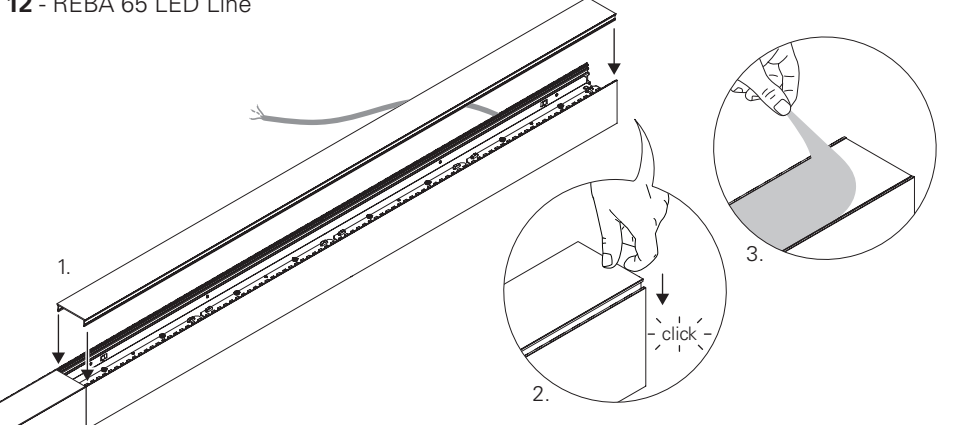
BLUE - N (NEUTRAL)
GREEN AND YELLOW - (EARTH)
BROWN - L (LIVE)
GREY - D1+
BLACK - D2-
BLUE - NE (EMERGENCY NEUTRAL)
BROWN - LE (EMERGENCY LIVE)
BLEU - N (NEUTRE)
VERT ET JAUNE - (TERRE)
MARRON - L (PHASE)
GRIS - D1+
NOIR - D2-
BLEU - NE (UNI. SECOURS NEUTRE)
MARRON - LE (UNI. SECOURS PHASE)
BLAU - N (NEUTRAL)
GRÜN UND GELB - (ERDE)
BRAUN - L (PHASE)
GRAU - D1+
SCHWARZ - D2-
BLAU - NE (NOTLICHT NEUTRAL)
BRAUN - LE (NOTLICHT PHASE)

AZUL - N (NEUTRO)
VERDE E AMARELO - (TIERRA)
CASTAÑO - L (FASE)
CINZA - D1+
PRETO - D2-
AZUL - NE (EMERGENCIA NEUTRO)
CASTAÑO - LE (EMERGENCIA FASE)
AZUL - N (NEUTRAL)
VERDE Y AMARILLO - (TIERRA)
MARRÓN - L (FASE)
GRIS - D1+
NEGRO - D2-
AZUL - NE (EMERGENCIA NEUTRAL)
MARRÓN - LE (EMERGENCIA FASE)

11 - REBA 65 LED Line

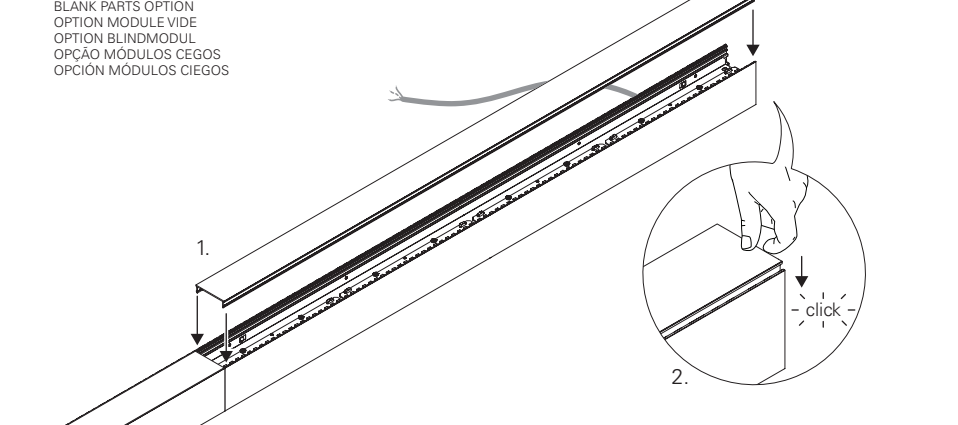


12 - REBA 65 LED Line

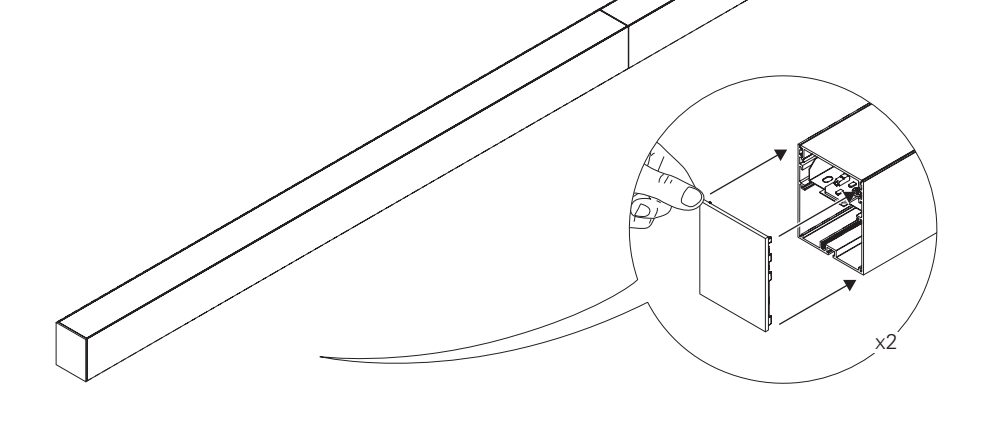


13 - REBA 65 LED Line

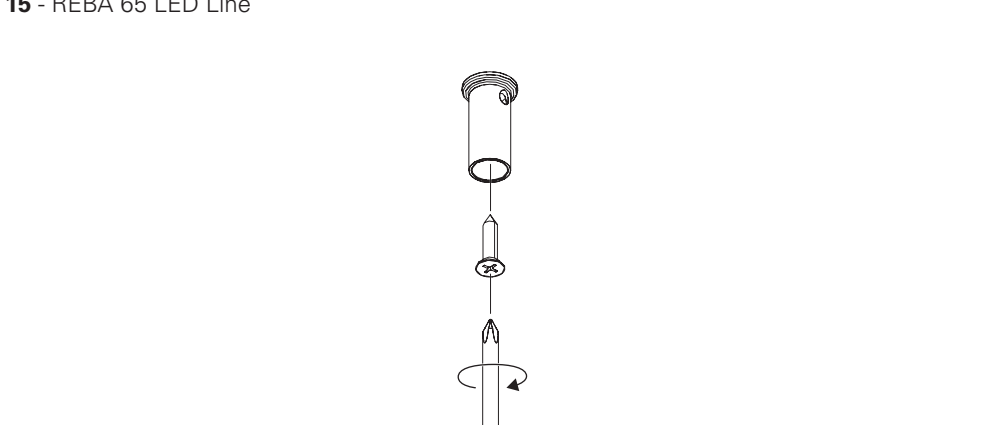
BLANK PARTS OPTION
OPTION MODULE VIDE
OPTION BLINDMODUL
OPÇÃO MÓDULOS CEGOS
OPCIÓN MÓDULOS CIEGOS



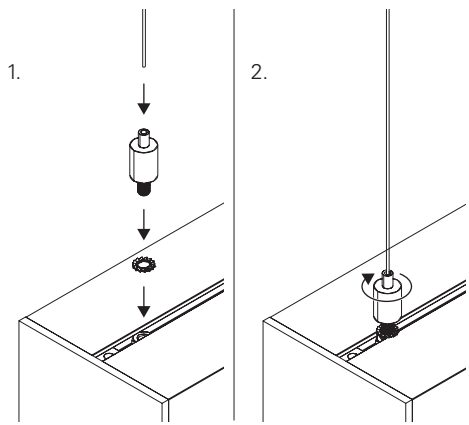
14 - REBA 65 LED Line



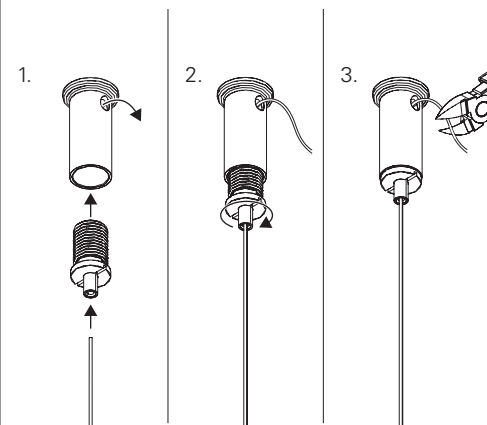
15 - REBA 65 LED Line



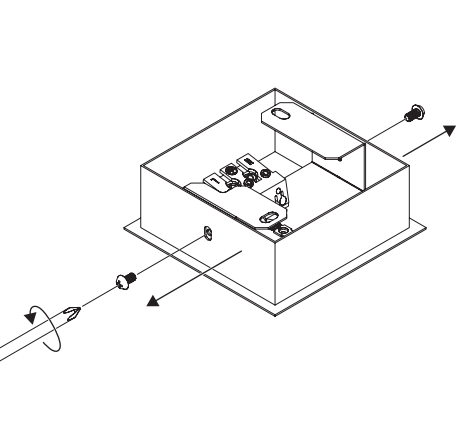
16 - REBA 65 LED Line



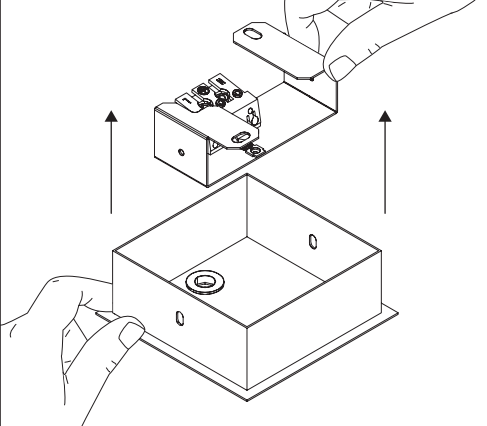
17 - REBA 65 LED Line



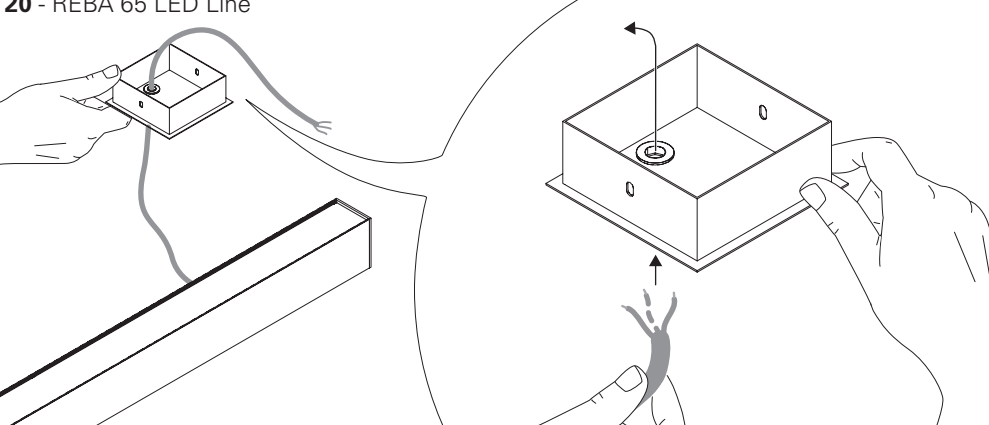
18 - REBA 65 LED Line



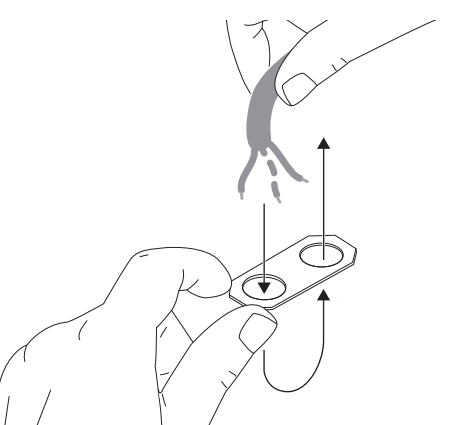
19 - REBA 65 LED Line



20 - REBA 65 LED Line



21 - REBA 65 LED Line



22 - REBA 65 LED Line

