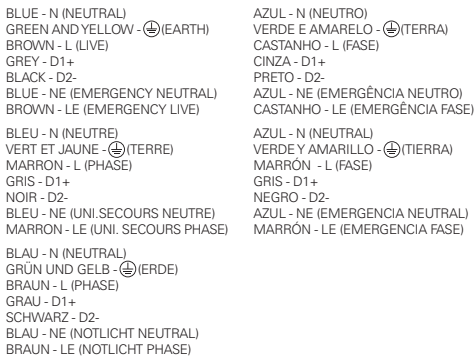


DIMMABLE POWER SUPPLY AND EMERGENCY KIT
CÂBLAGE AVEC GRADATION ET UNITÉ DE SECOURS
STROMVERSORGUNG FÜR DIMMBARE LEUCHTE ODER MIT NOTLICHT-EINSATZ
ALIMENTAÇÃO ELÉCTRICA COM REGULAÇÃO E KIT EMERGENCIA
ELECTRIFICACIÓN CON REGULACIÓN Y KIT DE EMERGENCIA



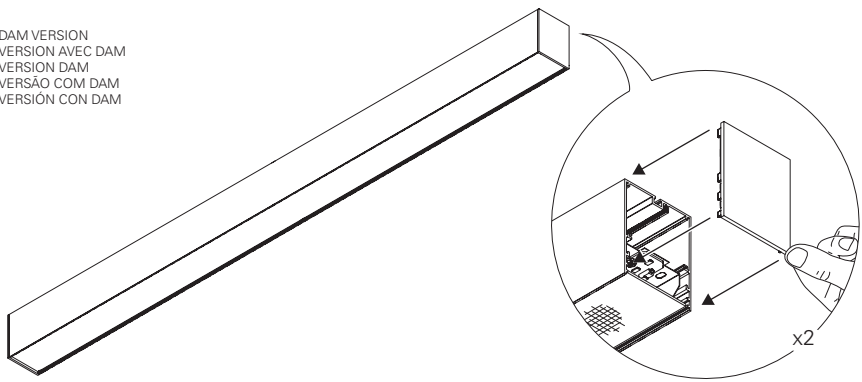
9 - REBA 65 LED

The diagram illustrates the assembly of the REBA 65 LED luminaire. It shows the luminaire being connected to a power supply unit (PSU) via a cable. The luminaire is then mounted to the ceiling using a bracket and screws. The diagram shows the luminaire being rotated to the desired position.

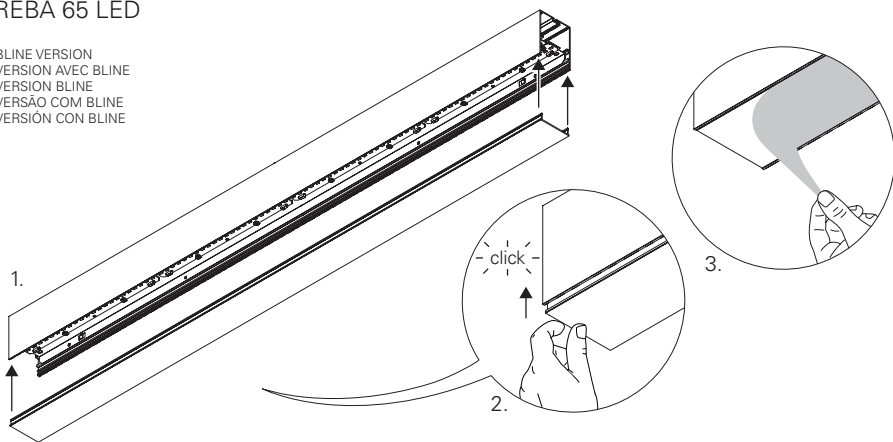
10 - REBA 65 LED

The diagram illustrates the installation of the REBA 65 LED strip. It features a perspective view of the strip and two circular callouts. Callout 1 shows a hand using a screwdriver to secure the strip to a surface. Callout 2 shows a close-up of the strip's end with four screws being tightened, labeled 'x4' and 'press', 'presse', 'pressione', 'pressa'.

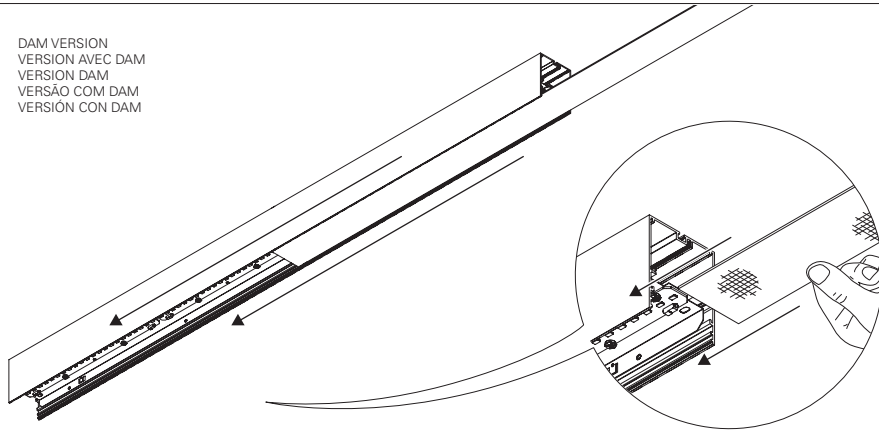
DAM VERSION
VERSION AVEC DAM
VERSION DAM
VERSÃO COM DAM
VERSIÓN CON DAM



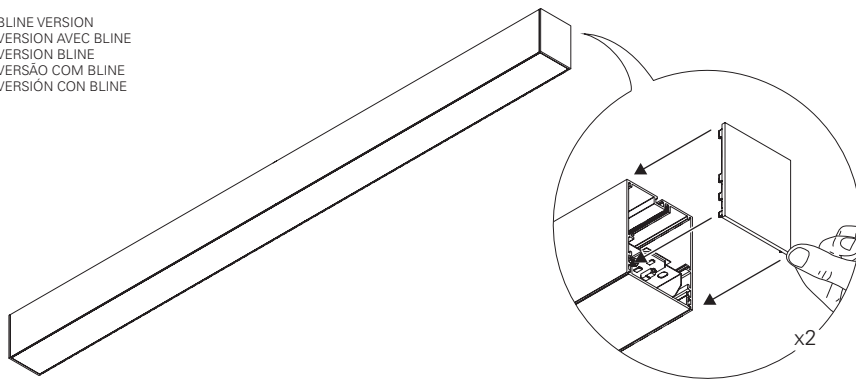
BLINE VERSION
VERSION AVEC BLINE
VERSION BLINE
VERSÃO COM BLINE
VERSIÓN CON BLINE



DAM VERSION
VERSION AVEC DAM
VERSION DAM
VERSÃO COM DAM
VERSIÓN CON DAM



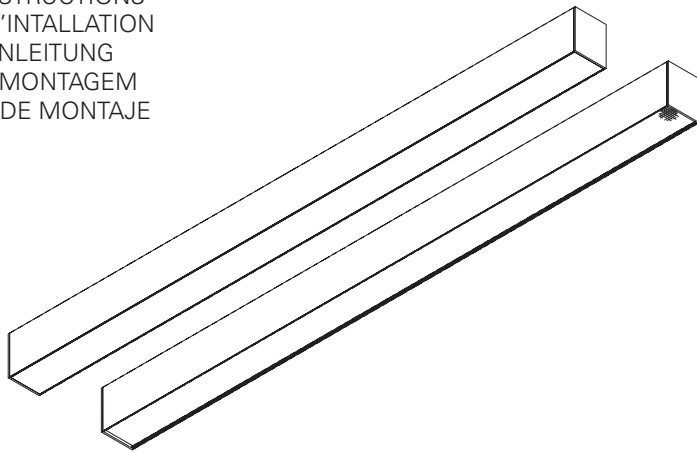
BLINE VERSION
VERSION AVEC BLINE
VERSION BLINE
VERSÃO COM BLINE
VERSIÓN CON BLINE



MADE IN
PORTUGAL

REBA 65 LED (SURFACE MOUNTED | SALLIE | ANBAUVERSION | SALIENTE | SUPERFICIE)

EN INSTALLATION INSTRUCTIONS
FR INSTRUCTIONS D'INSTALLATION
DE INSTALLATIONSANLEITUNG
PT INSTRUÇÕES DE MONTAGEM
ES INSTRUCCIONES DE MONTAJE



IP 20

BLINE
960°C

DAM
650°C

230V/50Hz



EN Warning: The light source contained in the luminaire should be replaced only by the manufacturer. Do not use this equipment in areas containing chemical agents: acids, solvents, paints, silicones, coatings, etc.

FR Advertissement: La source de lumière contenue dans la luminaria doit être remplacée par le fabricant. En cas d'anomalie détectée, contactez le fabricant. Ne pas utiliser l'équipement dans les zones qui contiennent des agents chimiques: acides, solvants, peintures, silicones, vernis, etc.

DE Warnung: Die in der Leuchte enthaltenen Lichtquelle sollte nur vom Hersteller ersetzt werden. Verwenden Sie dieses Gerät nicht in Bereichen mit chemischen Mitteln: Säuren, Lösungsmittel, Farben, Silikone, Beschichtungen etc.

PT Atenção: A fonte de luz contida na luminária deve ser substituída unicamente pelo fabricante. Qualquer anomalia detectada contactar o fabricante. Não utilizar o equipamento em zonas que contenham agentes químicos: ácidos, solventes, tintas, silicones, vernizes, etc.

ES Atención: La fuente de luz contenida en la luminaria debe ser substituída únicamente por el fabricante. Cualquier anomalia detectada contactar con el fabricante. No utilizar la luminaria en zonas que contengan agentes químicos: ácidos, disolventes, pinturas, siliconas, barnices, etc."



EN Caution, risk of electric shock.
FR Attention, risque de choc électrique.
DE Achtung, Gefahr eines Stromschlags.
PT Cuidado, risco de choque elétrico.
ES Precaución, riesgo de descarga eléctrica.



EN If glass or diffuser break or crack, please replace it.
FR En cas de casse ou fissurement, remplacez le verre ou diffuseur.
DE Bei Bruch oder Riss, Glas oder Diffuser ersetzen.
PT Em caso de quebra ou fissura, substituir o vidro ou difusor.
ES En caso de rotura o fisura, sustituir el vidrio o difusor.

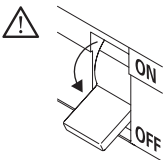
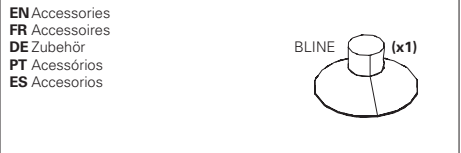


 **EN** Read carefully the general terms and conditions of use and environmental concern with recycling attached. **FR** Lire attentivement les conditions générales d'utilisation et de préoccupation environnementales avec les recyclage ci-joint. **DE** Bitte lesen Sie die Allgemeinen Geschäftsbedingungen und Umweltbewusstsein über Recycling angeschlossen. **PT** Ler atentamente as condições gerais de uso e preocupação ambiental com a reciclagem, em anexo. **ES** Lea atentamente las condiciones generales de uso y preocupación ambiental con el reciclaje adjuntos.

EN We reserve the right to make changes on technical specifications, design and installation leaflet without prior notice. | **FR** Sous réserve de modifications au niveau de la conception, des spécifications techniques et de la notice. | **DE** Änderungen von Entwurf, technischen Daten und Bedienungsanleitungen bleiben vorbehalten. | **PT** O fabricante reserva-se ao direito de realizar modificações no desenho, especificações técnicas e folheto, sem aviso prévio. | **ES** El fabricante se reserva el derecho de realizar modificaciones en el diseño, las especificaciones técnicas y el folleto.

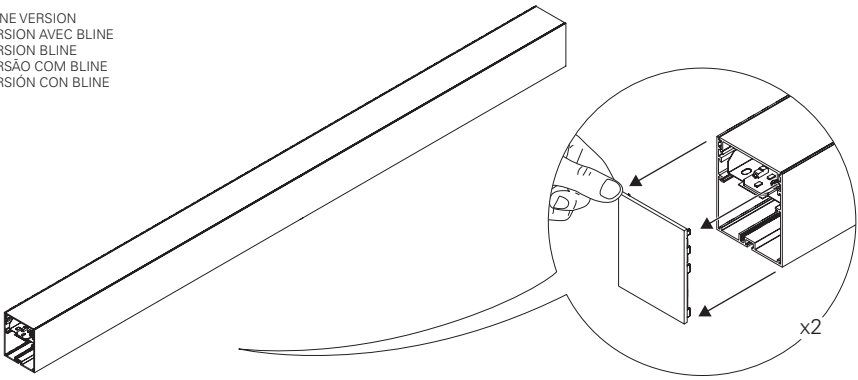
REBA 65 LED

EN SURFACE MOUNTED VERSION
FR VERSION SAILLIE
DE AUFBAUVERSION
PT VERSÃO SALIENTE
ES VERSIÓN DE SUPERFICIE

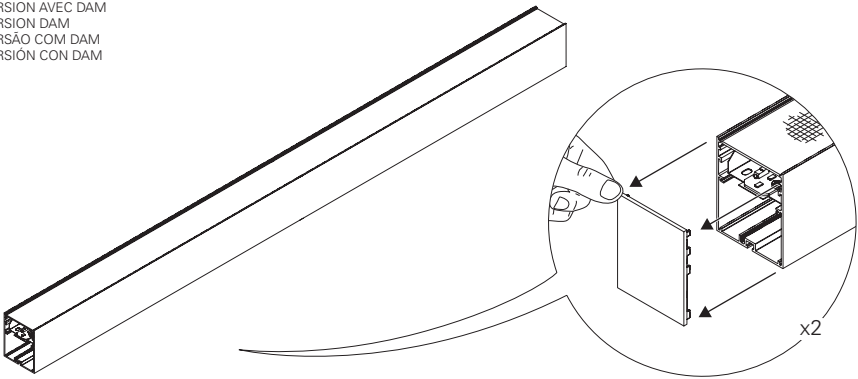


1 - REBA 65 LED

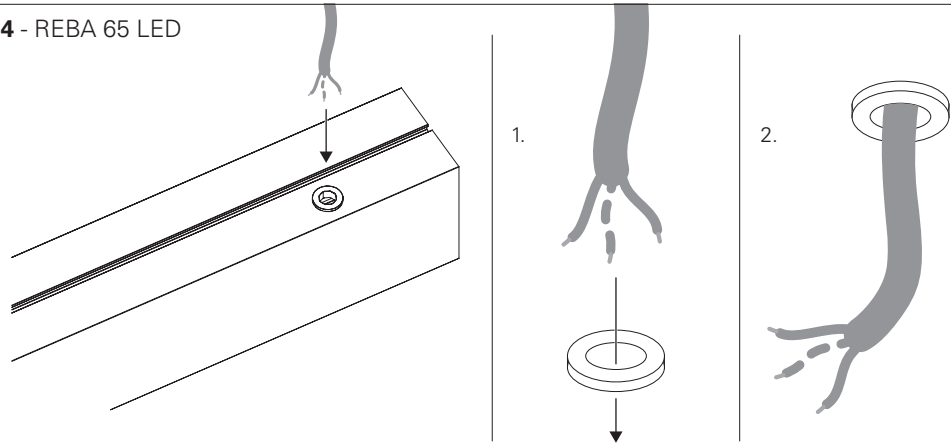
BLINE VERSION
VERSION AVEC BLINE
VERSION BLINE
VERSÃO COM BLINE
VERSION CON BLINE



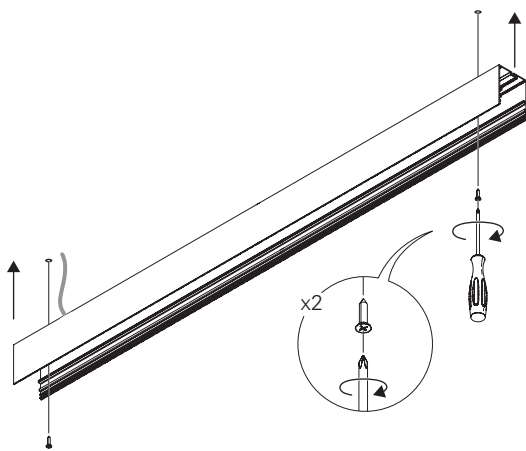
DAM VERSION
VERSION AVEC DAM
VERSION DAM
VERSÃO COM DAM
VERSION CON DAM



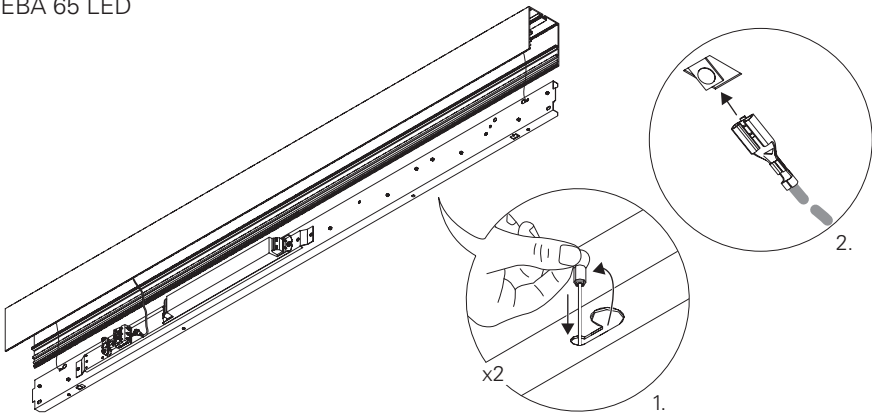
4 - REBA 65 LED



5 - REBA 65 LED

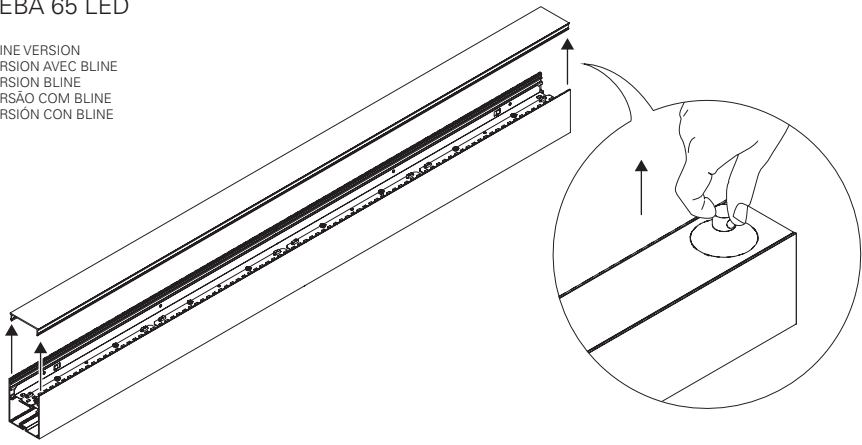


6 - REBA 65 LED

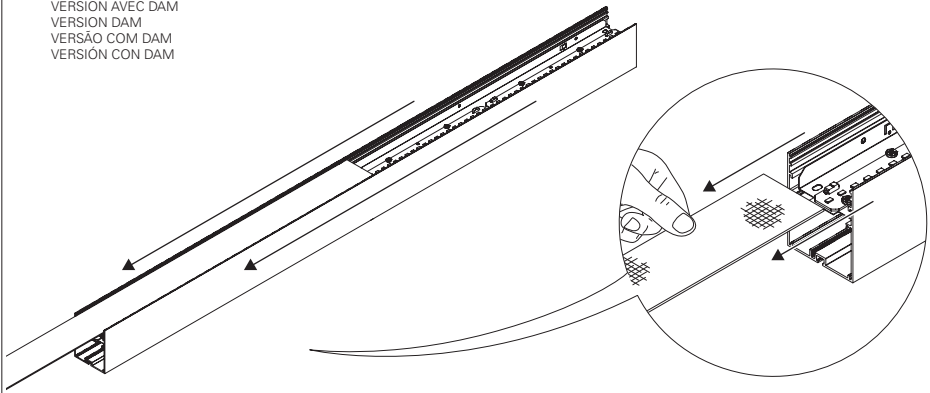


2 - REBA 65 LED

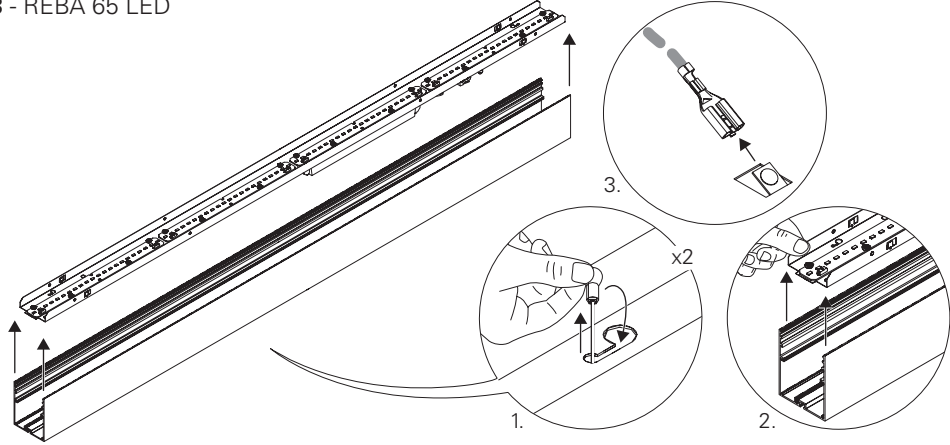
BLINE VERSION
VERSION AVEC BLINE
VERSION BLINE
VERSÃO COM BLINE
VERSION CON BLINE



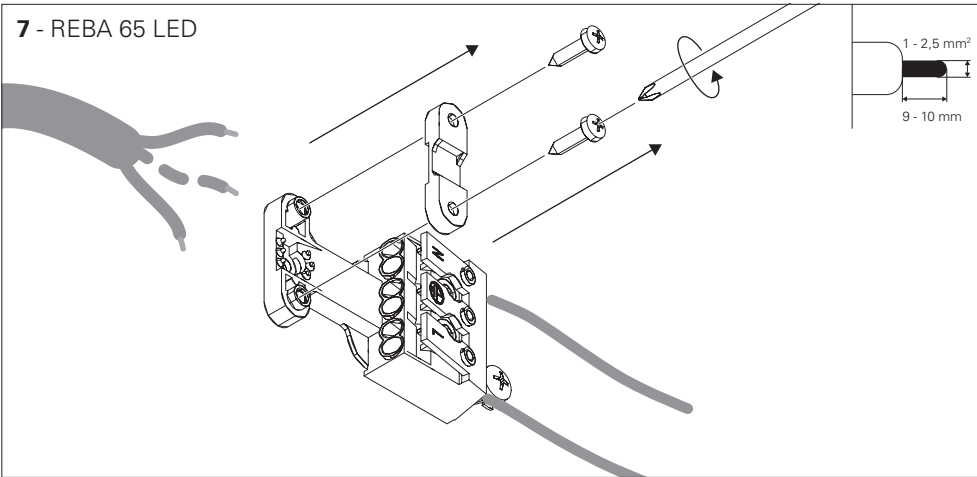
DAM VERSION
VERSION AVEC DAM
VERSION DAM
VERSÃO COM DAM
VERSION CON DAM



3 - REBA 65 LED

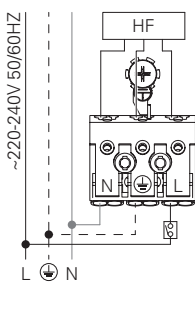


7 - REBA 65 LED



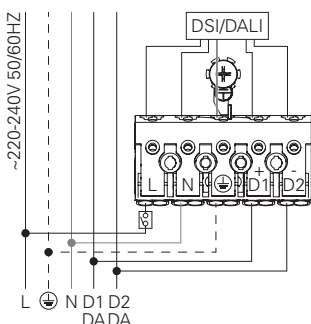
8 - REBA 65 LED HF

STANDARD POWER SUPPLY
CÂBLAGE STRANDARD
STANDARD VERDRAHTUNG
ALIMENTAÇÃO ELÉCTRICA STANDARD
ELECTRIFICACIÓN ESTÁNDAR



DSI/DALI

DIMMABLE POWER SUPPLY
CÂBLAGE AVEC GRADATION
DIMMBARE VERDRAHTUNG
ALIMENTAÇÃO ELÉCTRICA COM REGULAÇÃO
ELECTRIFICACIÓN CON REGULACIÓN



BLUE - N (NEUTRAL)
GREEN AND YELLOW - (EARTH)
BROWN - L (LIVE)
GREY - D1+
BLACK - D2-

BLEU - N (NEUTRE)
VERT ET JAUNE - (TERRE)
MARRON - L (PHASE)
GRIS - D1+
NOIR - D2-

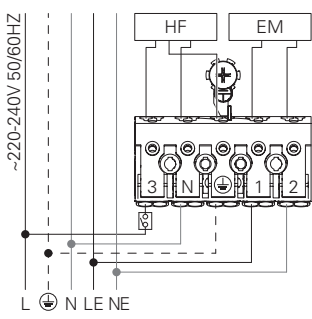
BLAU - N (NEUTRAL)
GRÜN UND GELB - (ERDE)
BRAUN - L (PHASE)
GRAU - D1+
SCHWARZ - D2-

AZUL - N (NEUTRO)
VERDE E AMARELO - (TERRA)
CASTANHO - L (FASE)
CINZA - D1+
PRETO - D2-

AZUL - N (NEUTRAL)
VERDEY AMARILLO - (TIERRA)
MARRÓN - L (FASE)
GRIS - D1+
NEGRO - D2-

8 - REBA 65 LED HF + EM

POWER SUPPLY HF WITH EMERGENCY KIT
CÂBLAGE HF AVEC UNITÉ DE SECOURS
VERDRAHTUNG FÜR HF MIT NOTLICHT-EINSATZ
ALIMENTAÇÃO ELÉCTRICA HF COM KIT EMERGÊNCIA
ELECTRIFICACIÓN HF CON KIT DE EMERGENCIA



BLUE - N (NEUTRAL)
GREEN AND YELLOW - (EARTH)
BROWN - L (LIVE)
GREY - LE (EMERGENCY LIVE)
BLACK - NE (EMERGENCY NEUTRAL)

BLEU - N (NEUTRE)
VERT ET JAUNE - (TERRE)
MARRON - L (PHASE)
GRIS - LE (UNI. SECOURS PHASE)
NOIR - NE (UNI. SECOURS NEUTRE)

BLAU - N (NEUTRAL)
GRÜN UND GELB - (ERDE)
BRAUN - L (PHASE)
GRAU - LE (NOTLICHT PHASE)
SCHWARZ - NE (NOTLICHT NEUTRAL)

AZUL - N (NEUTRO)
VERDE E AMARELO - (TERRA)
CASTANHO - L (FASE)
CINZA - LE (EMERGÊNCIA FASE)
PRETO - NE (EMERGÊNCIA NEUTRO)

AZUL - N (NEUTRAL)
VERDEY AMARILLO - (TIERRA)
MARRÓN - L (FASE)
GRIS - LE (EMERGENCIA FASE)
NEGRO - NE (EMERGENCIA NEUTRAL)