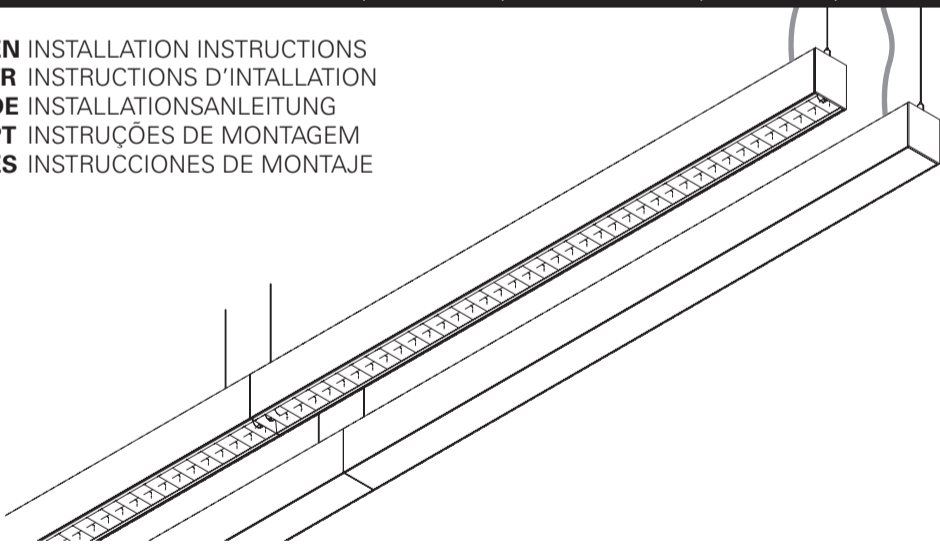


EN INSTALLATION INSTRUCTIONS  
FR INSTRUCTIONS D'INSTALLATION  
DE INSTALLATIONSANLEITUNG  
PT INSTRUÇÕES DE MONTAGEM  
ES INSTRUCCIONES DE MONTAJE



CE  IP 20  230V/50Hz 



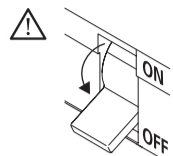
MAINTENANCE | ENTRETIEN | WARTUNG  
MANUTENÇÃO | MANTENIMIENTO

**EN** To replace lamps please reverse the steps 13-12-11-10 of this leaflet.  
**FR** Pour remplacer les tubes inversez les étapes 13-12-11-10 de cette brochure.  
**DE** Um die Lampen zu ersetzen müssen die Schritte 13-12-11-10 dieser Broschüre umgekehrt werden.  
**PT** Para trocar lâmpadas deve inverter os passos 13-12-11-10 deste folheto.  
**ES** Para cambiar las lámparas debe invertir los pasos 13-12-11-10 de este folleto.

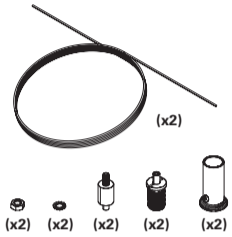
REBA 65 Line

EN SUSPENDED VERSION  
FR VERSION SUSPENDU  
DE PENDELVERSION  
PT VERSÃO SUSPENSÃO  
ES VERSIÓN SUSPENDIDO

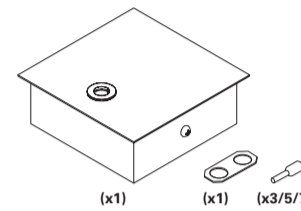
EN Accessories  
FR Accessoires  
DE Zubehör  
PT Acessórios  
ES Accesorios



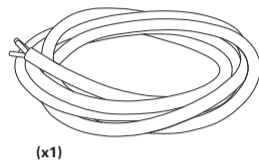
SUSPENSION OPTION  
OPTION SUSPENSION  
OPTIONEN AUFHÄNGUNG  
OPÇÃO SUSPENSÃO  
OPCIÓN SUSPENSIÓN



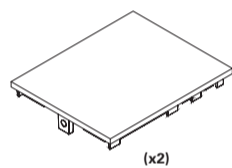
CEILING ROSE OPTION  
OPTION PATÈRE DE SUSPENSION  
OPTIONEN DECKENBALDACHIN  
OPÇÃO CAIXA DE ALIMENTAÇÃO  
OPCIÓN BASE DE TECTO



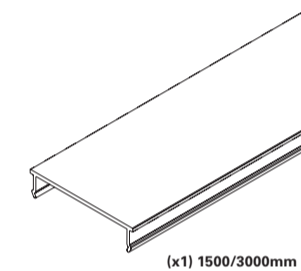
CURRENT SUPPLY CABLE OPTION  
OPTION CABLE D'ALIMENTATION  
OPTIONEN EINSPeisungskABEL  
OPÇÃO CABO DE ALIMENTAÇÃO  
OPCIÓN CABLE DE ALIMENTACIÓN



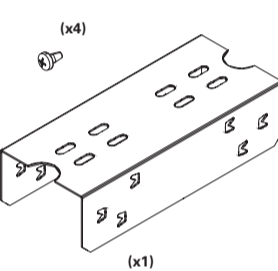
START KIT OPTION  
OPTION KIT DÉBUT DE LIGNE  
OPTION START KIT  
OPÇÃO START KIT  
OPCIÓN START KIT



BLANK PARTS OPTION  
OPTION MODULE VIDE  
OPTION BLINDMODUL  
OPÇÃO MÓDULOS CEGOS  
OPCIÓN MÓDULOS CIEGOS

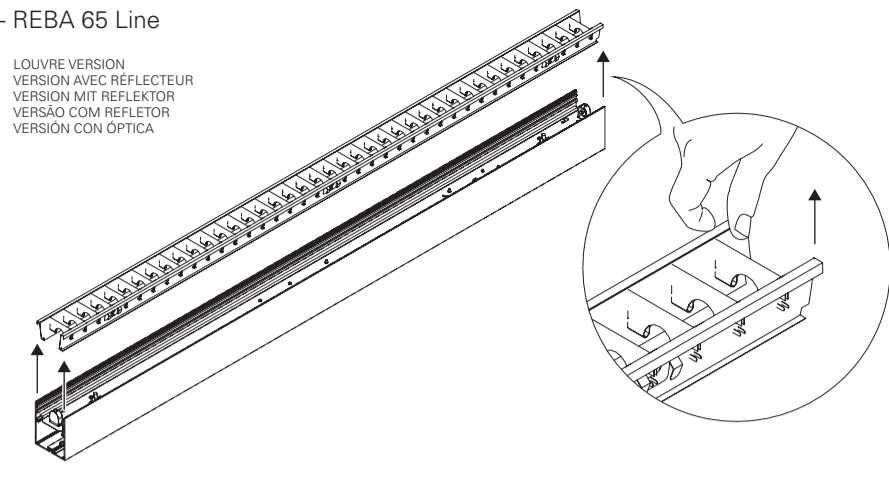


BODY CONNECTOR KIT OPTION  
OPTION KIT UNION  
OPTION VERBUNDUNGS KIT  
OPÇÃO KIT DE UNIÃO  
OPCIÓN KIT DE UNIÓN

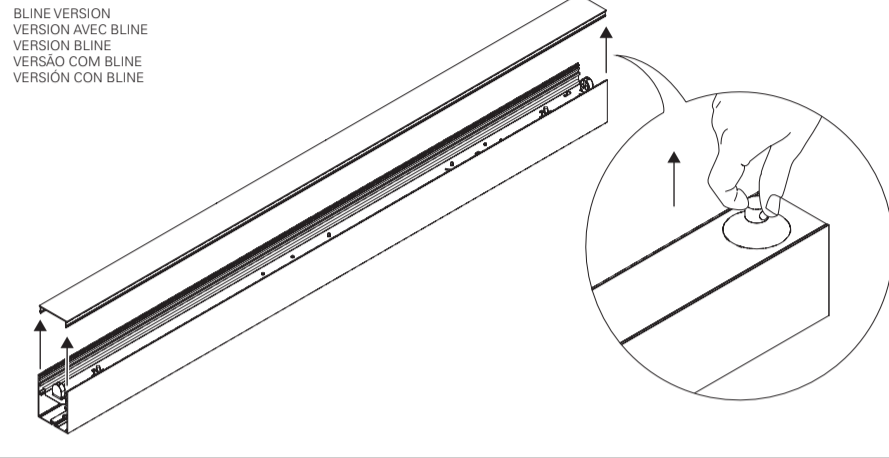


1 - REBA 65 Line

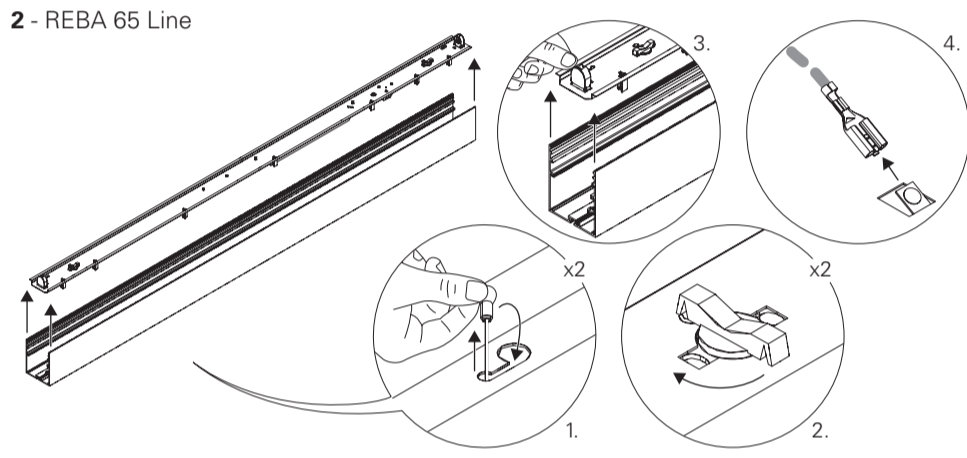
LOUVRE VERSION  
VERSION AVEC REFLECTEUR  
VERSION MIT REFLEKTOR  
VERSÃO COM REFLETOR  
VERSIÓN CON ÓPTICA



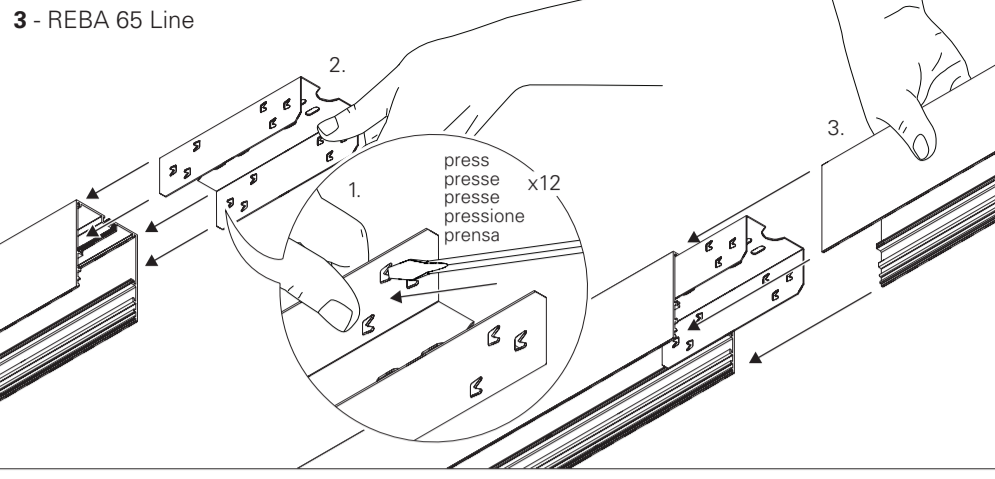
BLUNE VERSION  
VERSION AVEC BLUNE  
VERSION BLUNE  
VERSÃO COM BLUNE  
VERSIÓN CON BLUNE



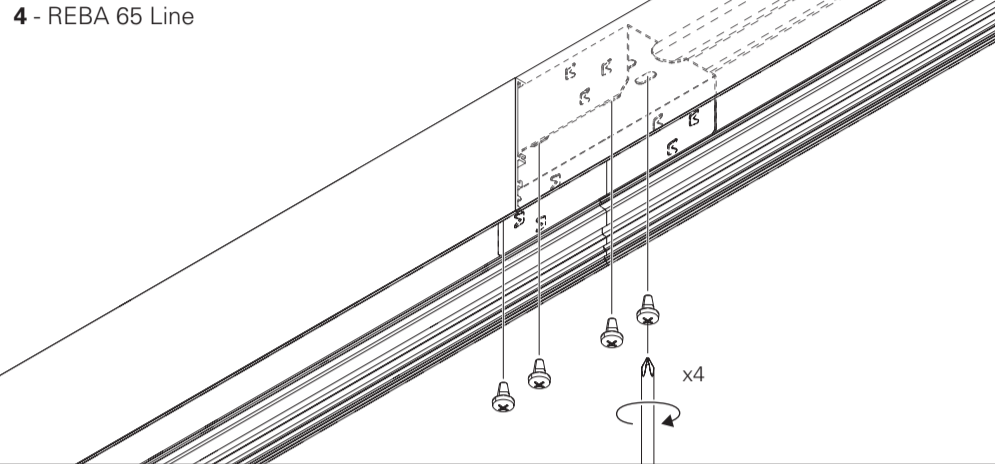
2 - REBA 65 Line



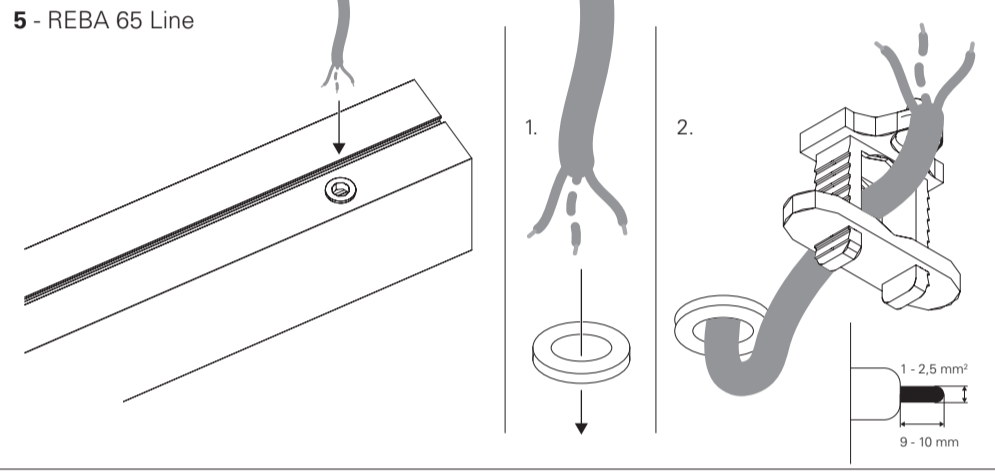
3 - REBA 65 Line



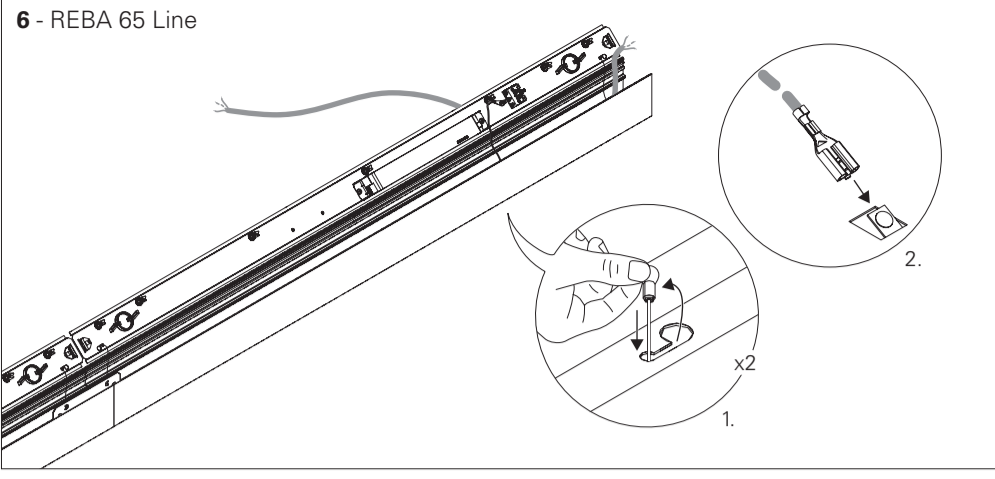
4 - REBA 65 Line



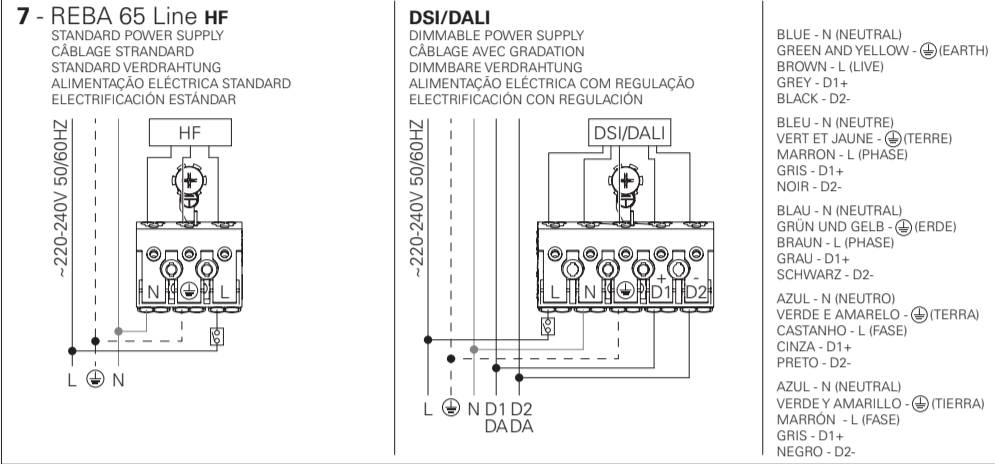
5 - REBA 65 Line



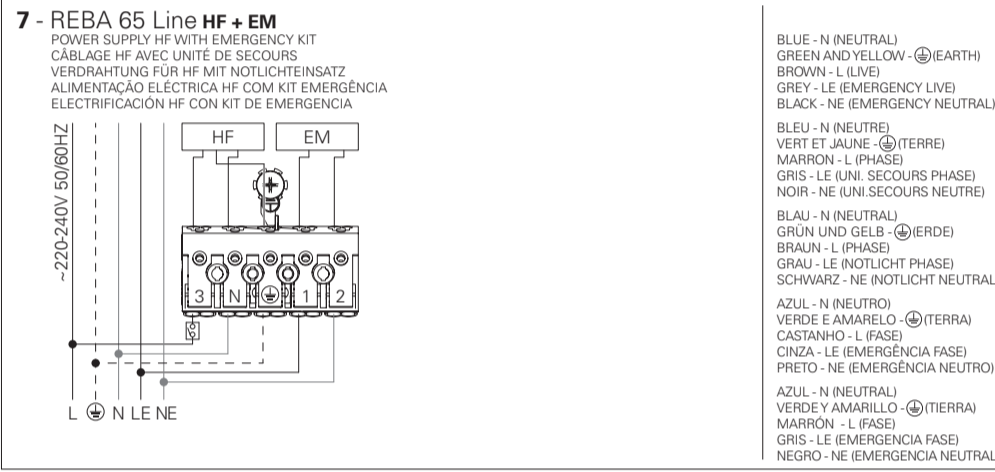
6 - REBA 65 Line



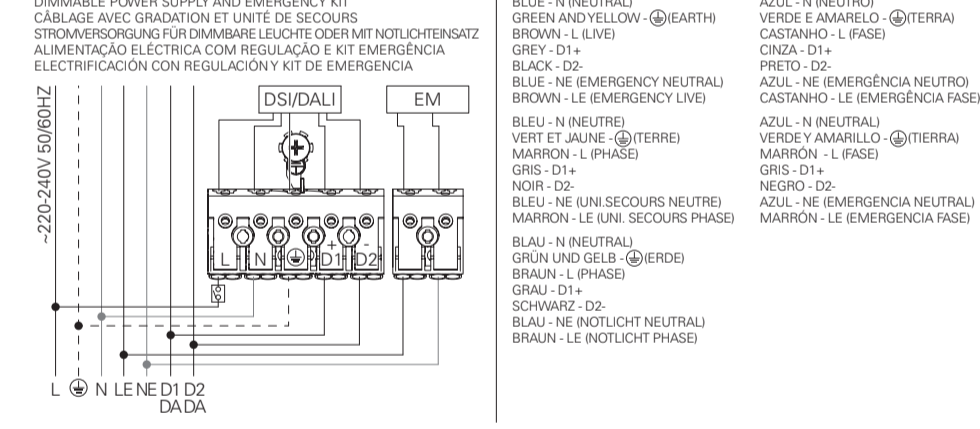
7 - REBA 65 Line HF



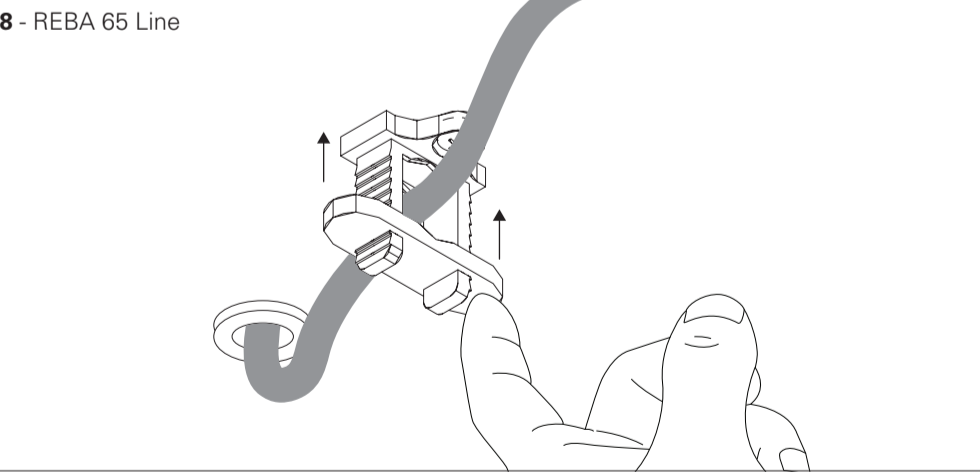
7 - REBA 65 Line HF + EM



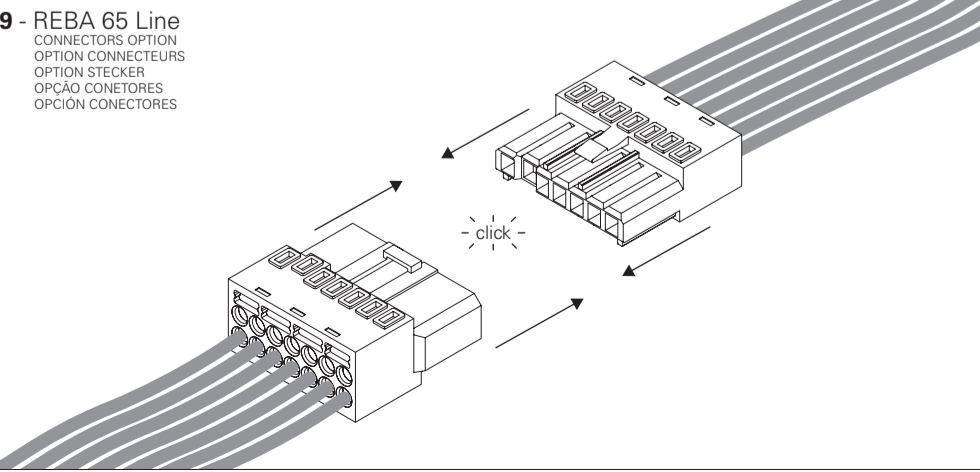
7 - REBA 65 Line DSI/DALI + EM



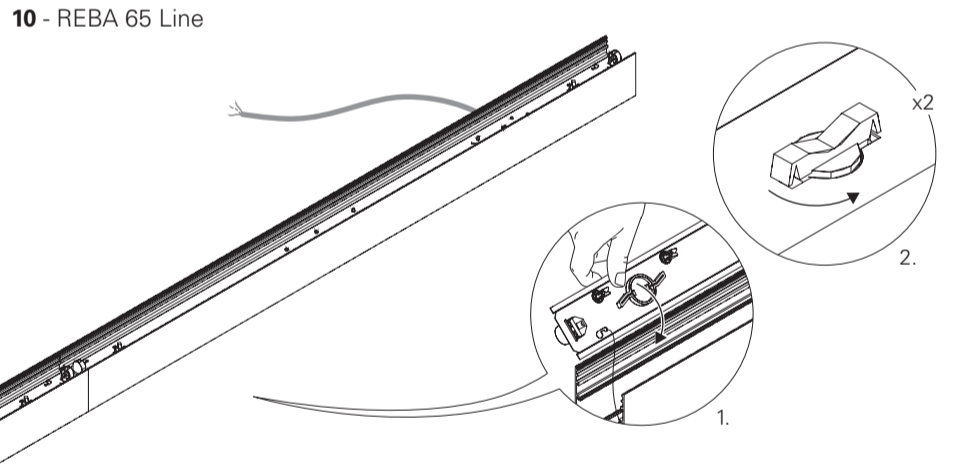
8 - REBA 65 Line



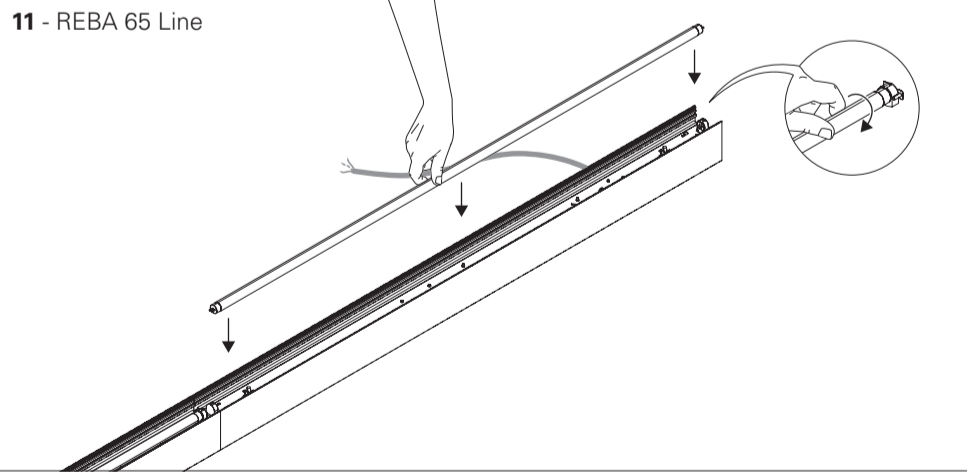
9 - REBA 65 Line



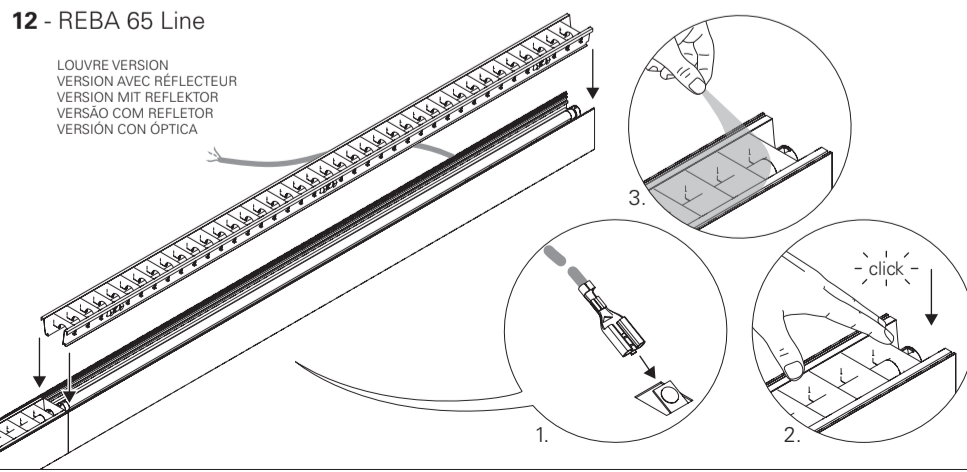
10 - REBA 65 Line



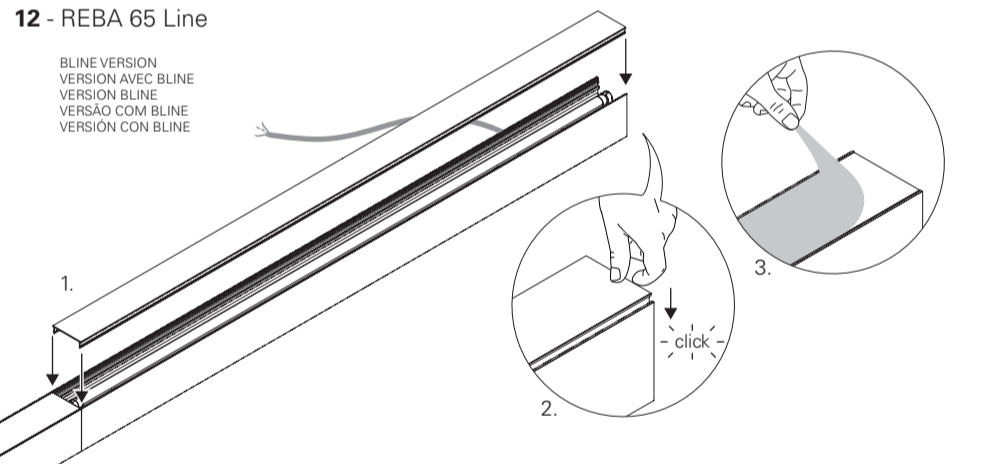
11 - REBA 65 Line



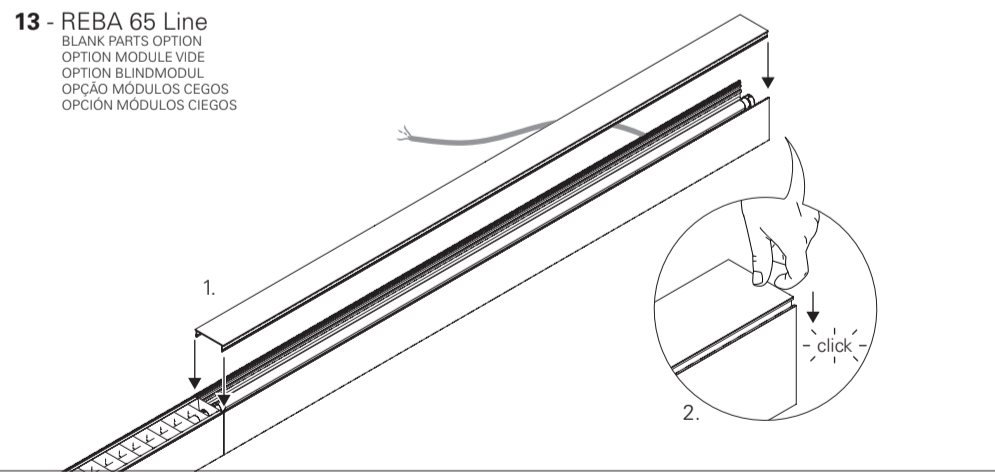
12 - REBA 65 Line



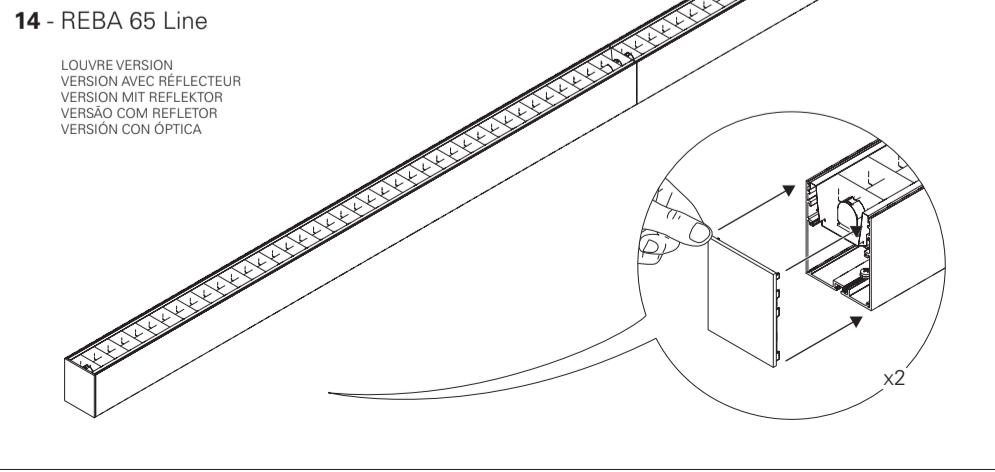
12 - REBA 65 Line



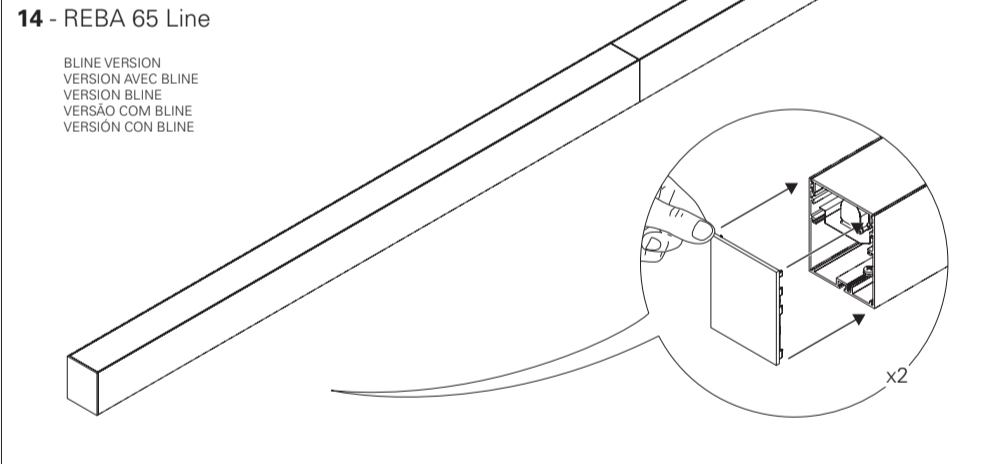
13 - REBA 65 Line



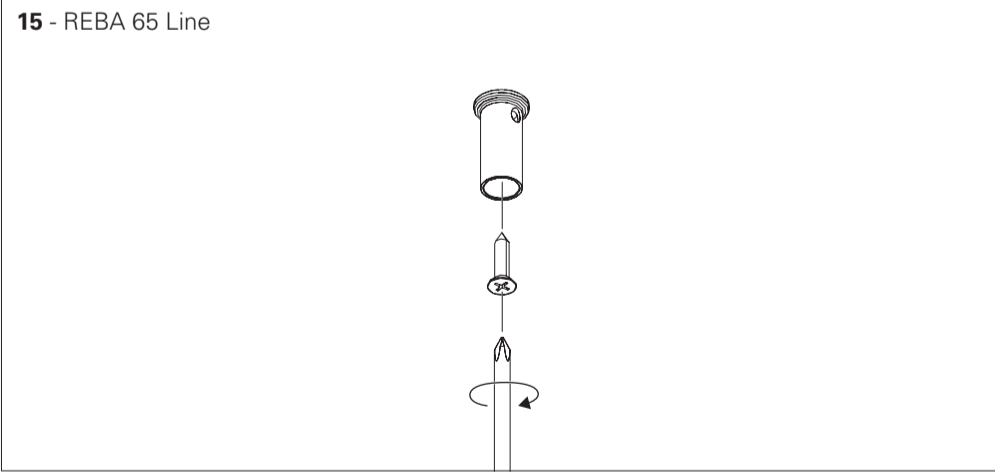
14 - REBA 65 Line



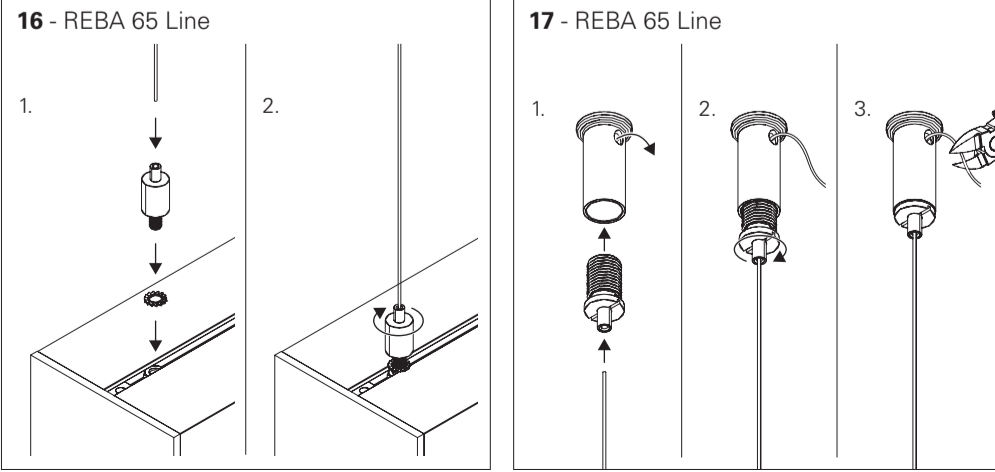
14 - REBA 65 Line



15 - REBA 65 Line



16 - REBA 65 Line



17 - REBA 65 Line

