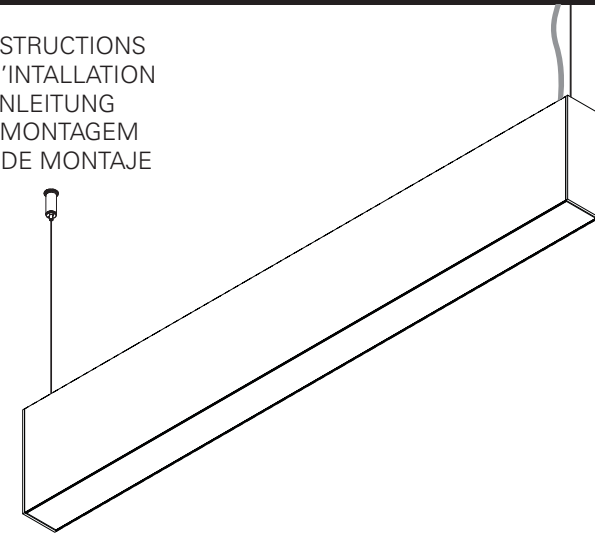


REBA D/I LED

EN INSTALLATION INSTRUCTIONS
FR INSTRUCTIONS D'INTALLATION
DE INSTALLATIONSANLEITUNG
PT INSTRUÇÕES DE MONTAGEM
ES INSTRUCCIONES DE MONTAJE



REBA D/I LED



LA LUMINARIA EN ZONAS QUE CONTENGAN AGENTES QUÍMICOS: ÁCIDOS, DISOLVENTES, PINTURAS, SILICONAS, BARNICES, ETC."

EN WARNING: THE LIGHT SOURCE CONTAINED IN THE LUMINAIRE SHOULD BE REPLACED ONLY BY THE MANUFACTURER. DO NOT USE THIS EQUIPMENT IN AREAS CONTAINING CHEMICAL AGENTS: ACIDS, SOLVENTS, PAINTS, SILICONES, COATINGS, ETC.

FR AVERTISSEMENT: LA SOURCE DE LUMIÈRE CONTENUE DANS LA LUMINAIRE DOIT ÊTRE REMPLACÉE PAR LE FABRICANT. EN CAS D'ANOMALIE DÉTECTÉE, CONTACTEZ LE FABRICANT. NE PAS UTILISER L'ÉQUIPEMENT DANS LES ZONES QUI CONTIENNENT DES AGENTS CHIMIQUES: ACIDES, SOLVANTS, PEINTURES, SILICONES, VERNIS, ETC.

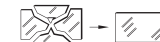
DE WARNUNG: DIE IN DER LEUCHTE ENTHALTEN LICHTQUELLE SOLLTE NUR VOM HERSTELLER ERSETZT WERDEN. VERWENDEN SIE DIESES GERÄT NICHT IN BEREICHEN MIT CHEMISCHEN MITTELN: SÄUREN, LÖSUNGSMITTEL, FARBEN, SILIKONE, BESCHICHTUNGEN ETC.

PT ATENÇÃO: A FONTE DE LUZ CONTIDA NA LUMINÁRIA DEVE SER SUBSTITUÍDA UNICAMENTE PELO FABRICANTE. QUALQUER ANOMALIA DETECTADA CONTACTAR O FABRICANTE. NÃO UTILIZAR O EQUIPAMENTO EM ZONAS QUE CONTENHAM AGENTES QUÍMICOS: ÁCIDOS, SOLVENTES, TINTAS, SILICONES, VERNIZES, ETC.

ES ATENCIÓN: LA FUENTE DE LUZ CONTENIDA EN LA LUMINARIA DEBE SER SUSTITUIDA ÚNICAMENTE POR EL FABRICANTE. CUALQUIER ANOMALÍA DETECTADA CONTACTAR CON EL FABRICANTE. NO UTILIZAR



EN CAUTION, RISK OF ELECTRIC SHOCK.
FR ATTENTION, RISQUE DE CHOC ÉLECTRIQUE.
DE ACHTUNG, GEFAHR EINES STROMSCHLAGS.
PT CUIDADO, RISCO DE CHOQUE ELÉTRICO.
ES PRECAUCIÓN, RIESGO DE DESCARGA ELÉCTRICA.



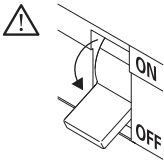
EN IF GLASS OR DIFFUSER BREAK OR CRACK, PLEASE REPLACE IT.
FR EN CAS DE CASSE OU FISSUREMENT, REMPLACEZ LE VERRE OU DIFFUSEUR.
DE BEI BRUCH ODER RISS, GLAS ODER DIFFUSER ERSETZEN.
PT EM CASO DE QUEBRA OU FISSURA, SUBSTITUIR O VIDRO OU DIFUSOR.
ES EN CASO DE ROTURA O FISURA, SUSTITUIR EL VIDRIO O DIFUSOR.



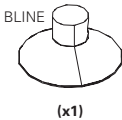
EN Read carefully the general terms and conditions of use and environmental concern with recycling attached. | **FR** Lire attentivement les conditions générales d'utilisations et de préoccupation environnementales avec les recyclage ci-joint. | **DE** Bitte lesen Sie de Allgemeinen Geschäftsbedingungen und Umweltbewusstsein über Recycling angeschlossen. | **PT** Ler atentamente as condições gerais de uso e preocupação ambiental com a reciclagem, em anexo. | **ES** Lea atentamente las condiciones generales de uso y preocupación ambiental con el reciclaje adjuntos.

EN We reserve the right to make changes on technical specifications, design and installation leaflet without prior notice. | **FR** Sous réserve de modifications au niveau de la conception, des spécifications techniques et de la notice. | **DE** Änderungen von Entwurf, technischen Daten und Bedienungsanleitungen bleiben vorbehalten. | **PT** O fabricante reserva-se no direito de realizar modificações no desenho, especificações técnicas e folheto, sem aviso prévio. | **ES** El fabricante se reserva el derecho de realizar modificaciones en el diseño, las especificaciones técnicas y el folleto.

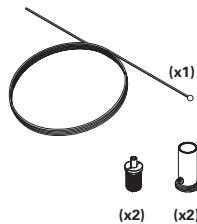
REBA D/I LED



ACCESSORIES
ACCESSOIRES
ZUBEHÖR
ACESSÓRIOS
ACCESORIOS

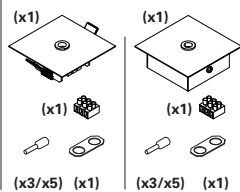


SUSPENSION
SUSPENSION
AUFHÄNGUNG
SUSPENSÃO
SUSPENSIÓN

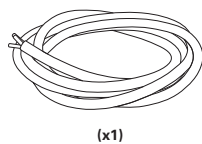


CEILING ROSE
PATÈRE DE SUSPENSION
DECKENBALDACHIN
CAIXA DE ALIMENTAÇÃO
BASE DETECHO

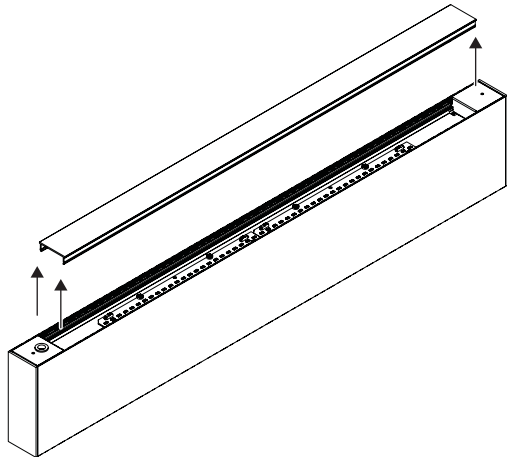
Recessed or surface mounted
Encastré ou en saillie
Vertieft oder hervorsteht
Encastrar ou saliente
Empotrar o superfície



CURRENT SUPPLY CABLE
CÂBLE D'ALIMENTATION
EINSPEISUNGSKABEL
CABO DE ALIMENTAÇÃO
CABLE DE ALIMENTACIÓN

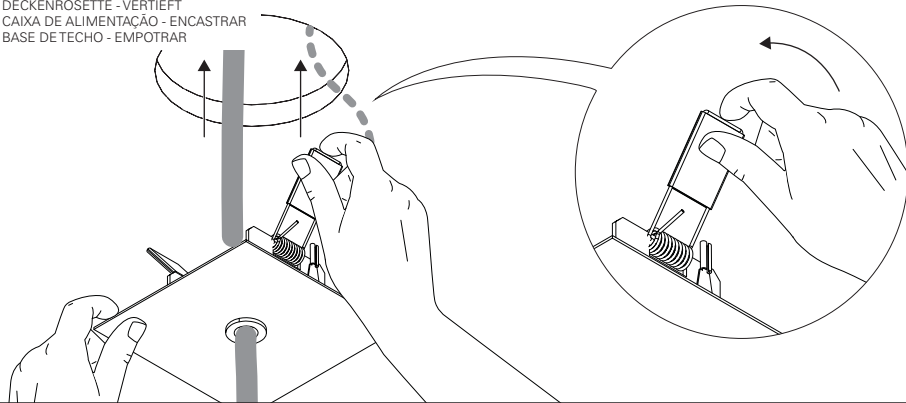


1 - REBA D/I LED



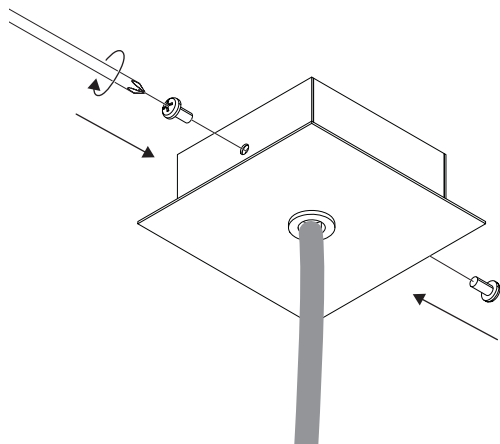
18 - REBA D/I LED

CEILING ROSE - RECESSED
PATÈRE DE SUSPENSION - ENCASTRÉ
DECKENROSETTE - VERTIEFT
CAIXA DE ALIMENTAÇÃO - ENCASTRAR
BASE DE TETO - EMPOTRAR

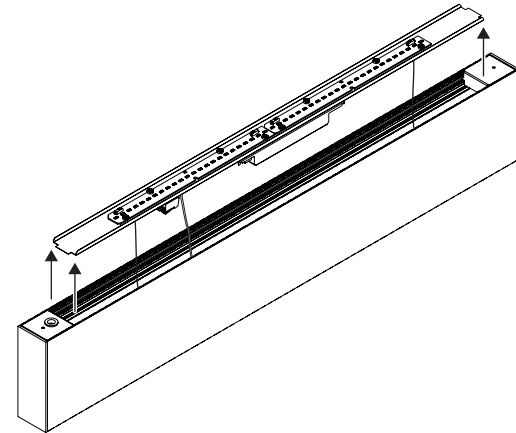


19 - REBA D/I LED

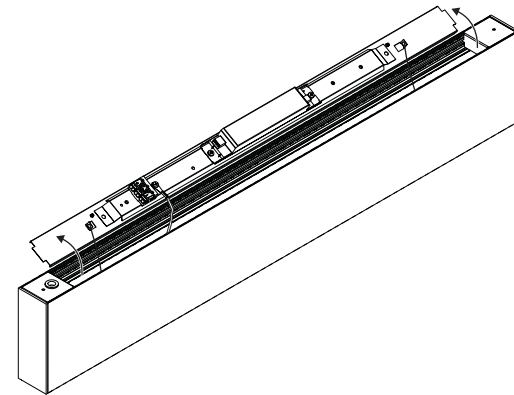
CEILING ROSE - SURFACE MOUNTED
PATÈRE DE SUSPENSION - SAILLIE
DECKENROSETTE - AUFPUTZ
CAIXA DE ALIMENTAÇÃO - SALIENTE
BASE DE TETO - SUPERFICIE



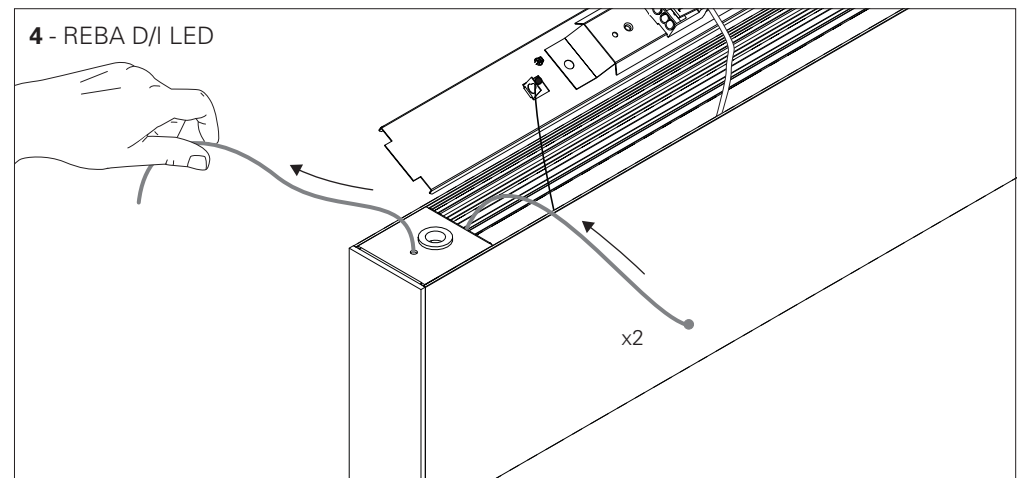
2 - REBA D/I LED



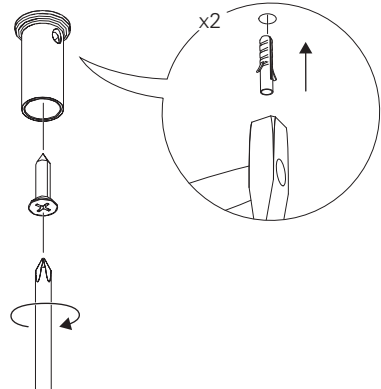
3 - REBA D/I LED



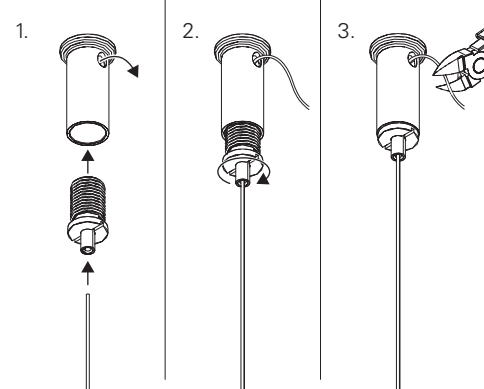
4 - REBA D/I LED



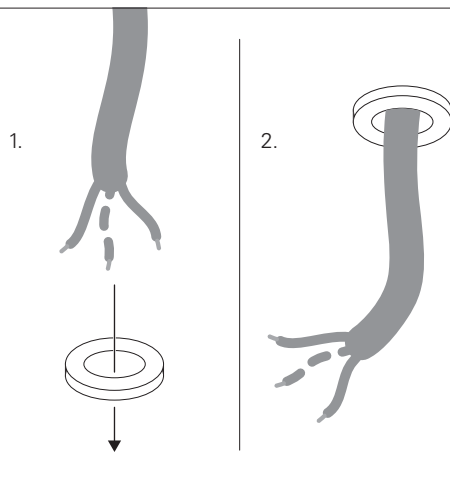
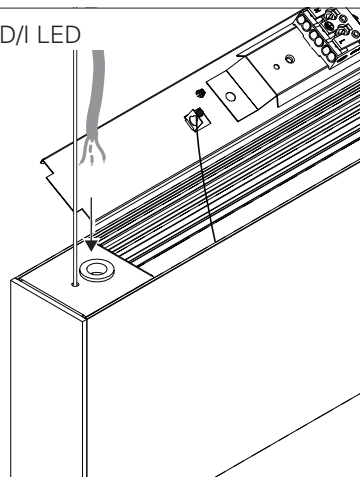
5 - REBA D/I LED



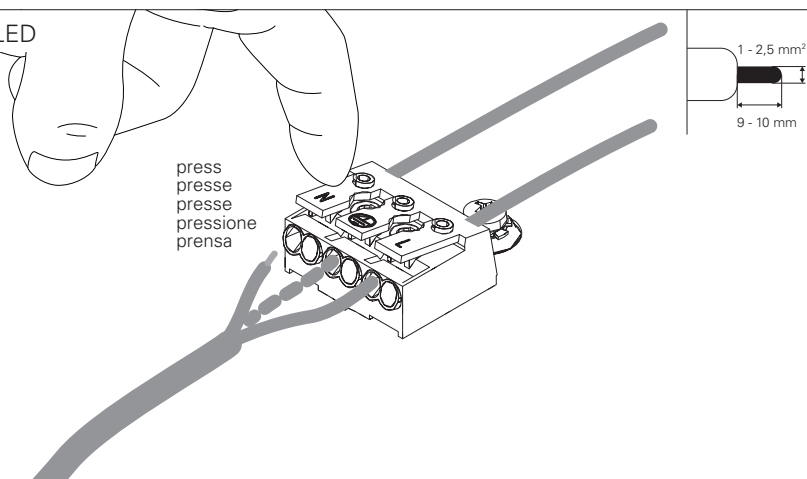
6 - REBA D/I LED



7 - REBA D/I LED

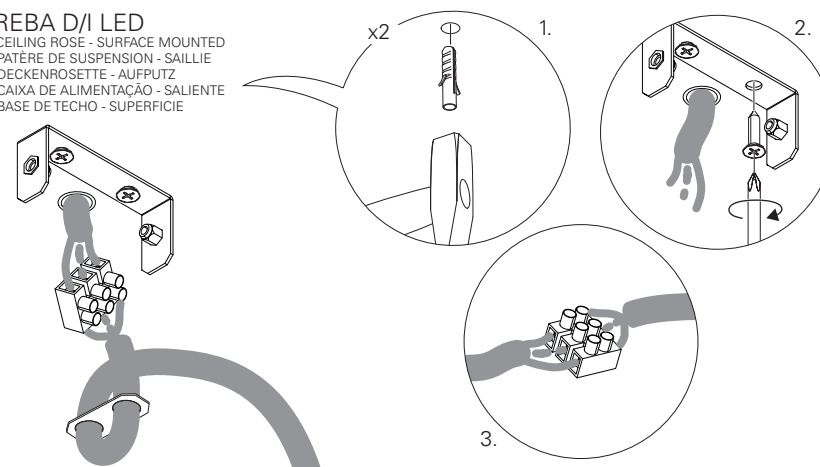


8 - REBA D/I LED



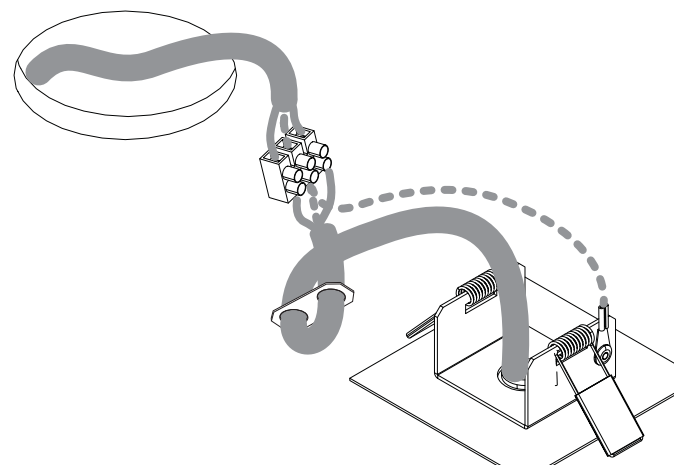
17 - REBA D/I LED

CEILING ROSE - SURFACE MOUNTED
PATÈRE DE SUSPENSION - SAILLIE
DECKENROSETTE - AUFPUTZ
CAIXA DE ALIMENTAÇÃO - SALIENTE
BASE DE TETO - SUPERFICIE



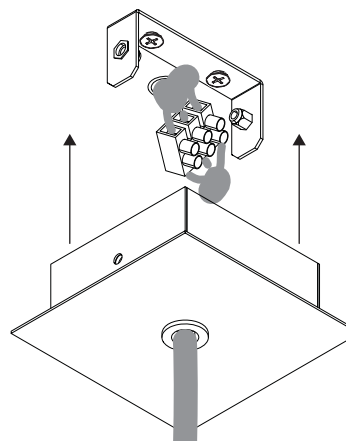
17 - REBA D/I LED

CEILING ROSE - RECESSED
PATÈRE DE SUSPENSION - ENCASTRÉ
DECKENROSETTE - VERTIEFT
CAIXA DE ALIMENTAÇÃO - ENCASTRAR
BASE DE TETO - EMPOTRAR



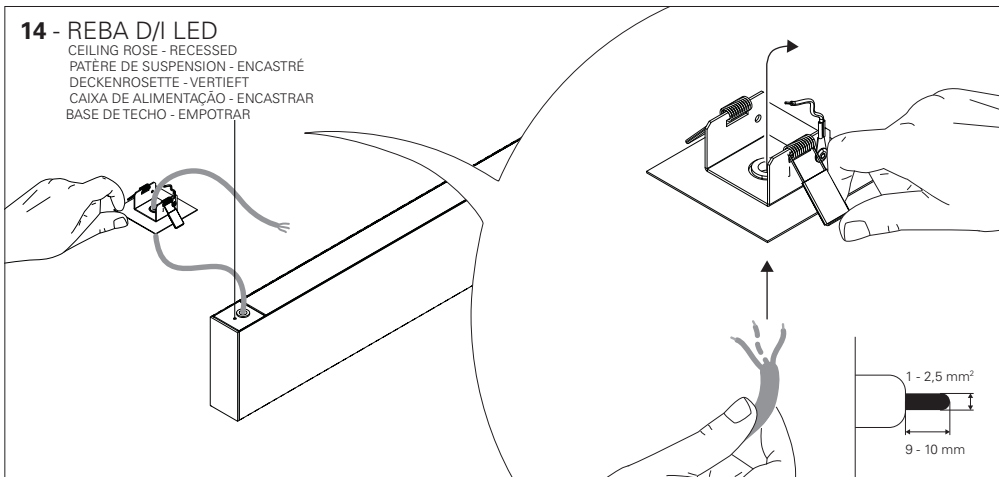
18 - REBA D/I LED

CEILING ROSE - SURFACE MOUNTED
PATÈRE DE SUSPENSION - SAILLIE
DECKENROSETTE - AUFPUTZ
CAIXA DE ALIMENTAÇÃO - SALIENTE
BASE DE TETO - SUPERFICIE

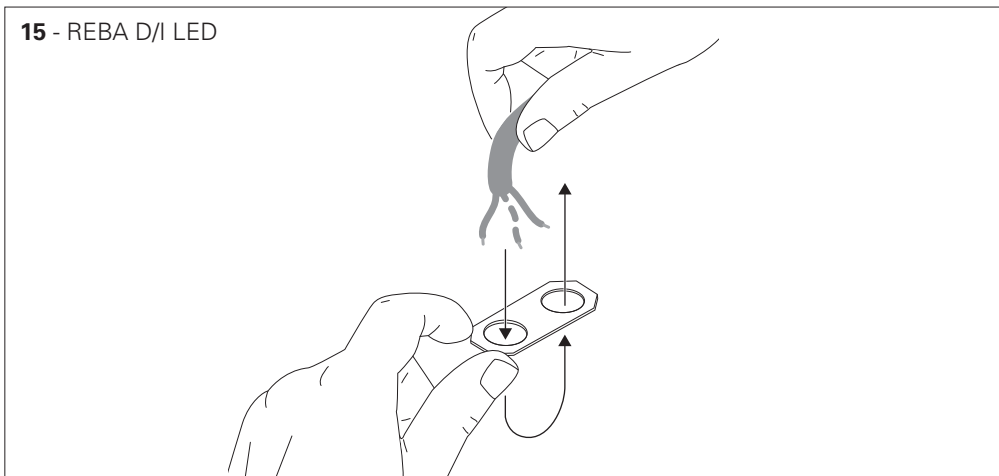


14 - REBA D/I LED

CEILING ROSE - RECESSED
PATÈRE DE SUSPENSION - ENCASTRÉ
DECKENROSETTE - VERTIEFT
CAIXA DE ALIMENTAÇÃO - ENCASTRAR
BASE DE TECTO - EMPOTRAR

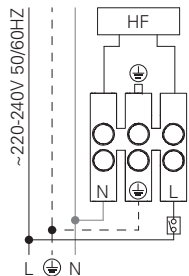


15 - REBA D/I LED



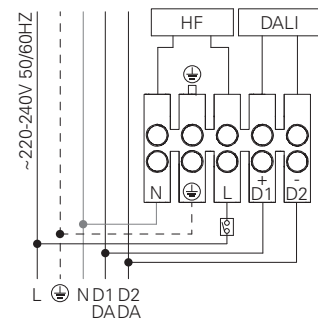
16 - REBA D/I LED HF

STANDARD POWER SUPPLY
CÂBLAGE STRANDARD
STANDARD VERDRAHTUNG
ALIMENTAÇÃO ELÉCTRICA STANDARD
ELECTRIFICACIÓN ESTÁNDAR



DALI

DIMMABLE POWER SUPPLY
CÂBLAGE AVEC GRADATION
DIMMBARE VERDRAHTUNG
ALIMENTAÇÃO ELÉCTRICA COM REGULAÇÃO
ELECTRIFICACIÓN CON REGULACIÓN



BLUE - N (NEUTRAL)
GREEN AND YELLOW - (EARTH)
BROWN - L (LIVE)
GREY - D1+
BLACK - D2-

BLEU - N (NEUTRE)
VERT ET JAUNE - (TERRE)
MARRON - L (PHASE)
GRIS - D1+
NOIR - D2-

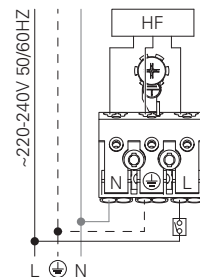
BLAU - N (NEUTRAL)
GRÜN UND GELB - (ERDE)
BRAUN - L (PHASE)
GRAU - D1+
SCHWARZ - D2-

AZUL - N (NEUTRO)
VERDE E AMARELO - (TIERRA)
CASTANHO - L (FASE)
CINZA - D1+
PRETO - D2-

AZUL - N (NEUTRAL)
VERDE Y AMARILLO - (TIERRA)
MARRÓN - L (FASE)
GRIS - D1+
NEGRO - D2-

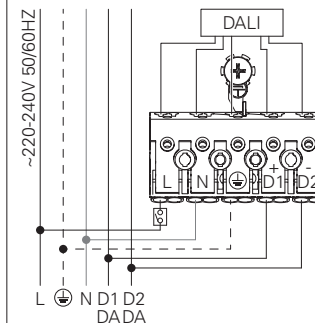
9 - REBA D/I LED HF

STANDARD POWER SUPPLY
CÂBLAGE STRANDARD
STANDARD VERDRAHTUNG
ALIMENTAÇÃO ELÉCTRICA STANDARD
ELECTRIFICACIÓN ESTÁNDAR



DALI

DIMMABLE POWER SUPPLY
CÂBLAGE AVEC GRADATION
DIMMBARE VERDRAHTUNG
ALIMENTAÇÃO ELÉCTRICA COM REGULAÇÃO
ELECTRIFICACIÓN CON REGULACIÓN



BLUE - N (NEUTRAL)
GREEN AND YELLOW - (EARTH)
BROWN - L (LIVE)
GREY - D1+
BLACK - D2-

BLEU - N (NEUTRE)
VERT ET JAUNE - (TERRE)
MARRON - L (PHASE)
GRIS - D1+
NOIR - D2-

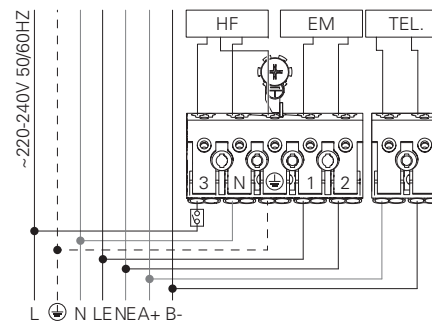
BLAU - N (NEUTRAL)
GRÜN UND GELB - (ERDE)
BRAUN - L (PHASE)
GRAU - D1+
SCHWARZ - D2-

AZUL - N (NEUTRO)
VERDE E AMARELO - (TIERRA)
CASTANHO - L (FASE)
CINZA - D1+
PRETO - D2-

AZUL - N (NEUTRAL)
VERDE Y AMARILLO - (TIERRA)
MARRÓN - L (FASE)
GRIS - D1+
NEGRO - D2-

9.1 - REBA D/I LED HF + EM + TEL.

POWER SUPPLY HF WITH EMERGENCY KIT AND TELECOMMAND
CÂBLAGE HF AVEC UNITE DE SECOURS ET TELECOMMANDE
VERDRAHTUNG FÜR HF MIT NOTLICHTSATS UND TELEKOMMAND
ALIMENTAÇÃO ELÉCTRICA HF COM KIT EMERGÊNCIA E TELECOMANDO
ELECTRIFICACIÓN HF CON KIT DE EMERGENCIA Y TELEMANDABLE



BLUE - N (NEUTRAL)
GREEN AND YELLOW - (EARTH)
BROWN - L (LIVE)
GREY - LE (EMERGENCY LIVE)
BLACK - NE (EMERGENCY NEUTRAL)
RED - A+
BLACK - B-

BLEU - N (NEUTRE)
VERT ET JAUNE - (TERRE)
MARRON - L (PHASE)
GRIS - LE (UNI. SECOURS PHASE)
NOIR - NE (UNI. SECOURS NEUTRE)
ROUGE - A+
NOIR - B-

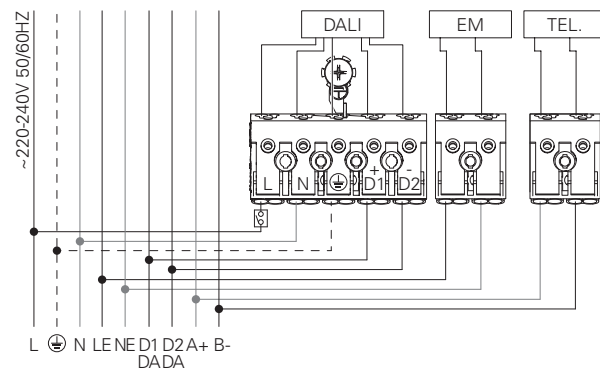
BLAU - N (NEUTRAL)
GRÜN UND GELB - (ERDE)
BRAUN - L (PHASE)
GRAU - LE (NOTLICHT PHASE)
SCHWARZ - NE (NOTLICHT NEUTRAL)
ROT - A+
SCHWARZ - B-

AZUL - N (NEUTRO)
VERDE E AMARELO - (TIERRA)
CASTANHO - L (FASE)
CINZA - LE (EMERGENCIA FASE)
PRETO - NE (EMERGENCIA NEUTRO)
VERMELHO - A+
PRETO - B-

AZUL - N (NEUTRAL)
VERDE Y AMARILLO - (TIERRA)
MARRÓN - L (FASE)
GRIS - LE (EMERGENCIA FASE)
NEGRO - NE (EMERGENCIA NEUTRAL)
ROJO - A+
NEGRO - B-

9.2 - REBA D/I LED DALI + EM + TEL.

POWER SUPPLY HF WITH EMERGENCY KIT AND TELECOMMAND
CABLAGE HF AVEC UNITE DE SECOURS ET TELECOMMANDE
VERDRAHTUNG FÜR HF MIT NOTLICHTEINSATZ UND TELEKOMMAND
ALIMENTAÇÃO ELÉCTRICA HF COM KIT EMERGÊNCIA E TELECOMANDO
ELECTRIFICACIÓN HF CON KIT DE EMERGENCIA Y TELEMANDABLE



BLUE - N (NEUTRAL)
GREEN AND YELLOW - (EARTH)
BROWN - L (LIVE)
GREY - D1+
BLACK - D2-
BLUE - NE (EMERGENCY NEUTRAL)
BROWN - LE (EMERGENCY LIVE)
RED - A+
BLACK - B-

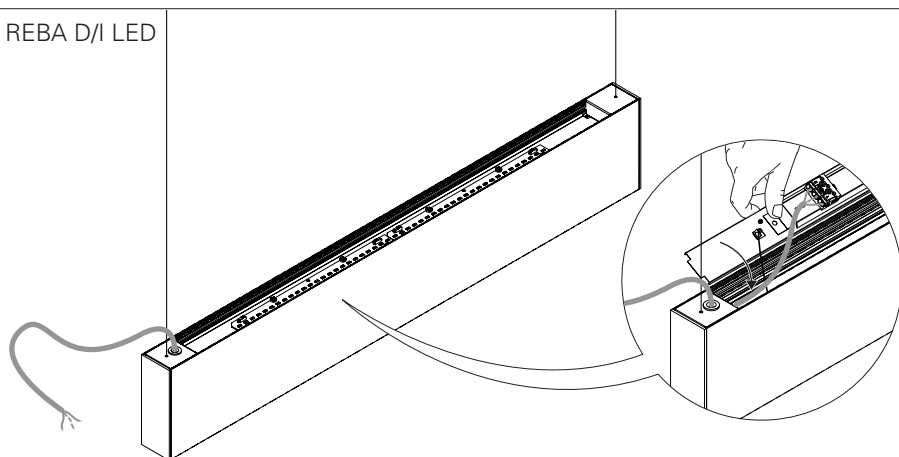
BLEU - N (NEUTRE)
VERT ET JAUNE - (TERRE)
MARRON - L (PHASE)
GRIS - D1+
NOIR - D2-
BLEU - NE (UNI. SECOURS NEUTRE)
MARRON - LE (UNI. SECOURS PHASE)
ROUGE - A+
NOIR - B-

BLAU - N (NEUTRAL)
GRÜN UND GELB - (ERDE)
BRAUN - L (PHASE)
GRAU - D1+
SCHWARZ - D2-
BLAU - NE (NOTLICHT NEUTRAL)
BRAUN - LE (NOTLICHT PHASE)
ROT - A+
SCHWARZ - B-

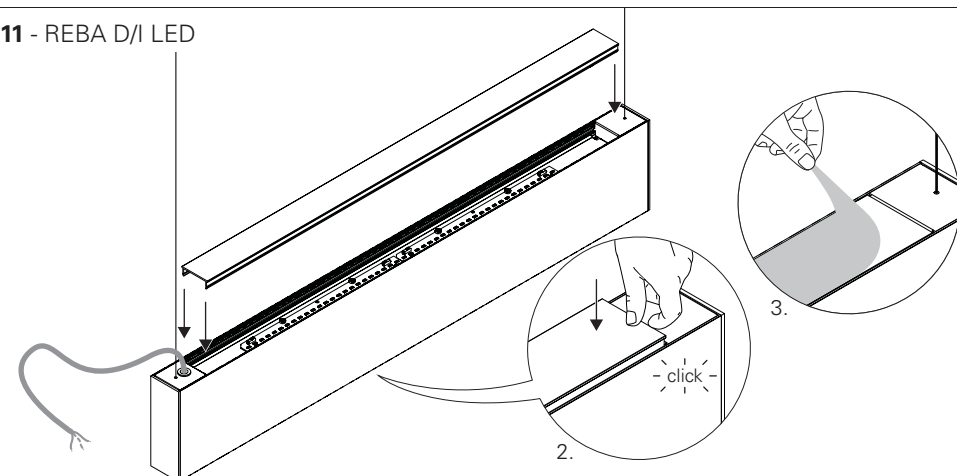
AZUL - N (NEUTRO)
VERDE E AMARELO - (TERRA)
CASTANHO - L (FASE)
CINZA - D1+
PRETO - D2-
AZUL - NE (EMERGÊNCIA NEUTRO)
CASTANHO - LE (EMERGÊNCIA FASE)
VERMELHO - A+
PRETO - B-

AZUL - N (NEUTRAL)
VERDE Y AMARILLO - (TIERRA)
MARRÓN - L (FASE)
GRIS - D1+
NEGRO - D2-
AZUL - NE (EMERGENCIA NEUTRAL)
MARRÓN - LE (EMERGENCIA FASE)
ROJO - A+
NEGRO - B-

10 - REBA D/I LED

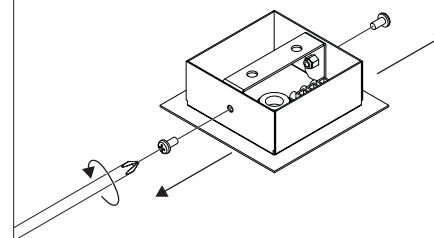


11 - REBA D/I LED



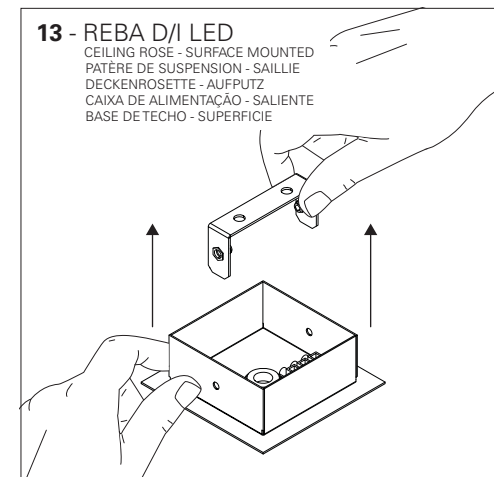
12 - REBA D/I LED

CEILING ROSE - SURFACE MOUNTED
PATÈRE DE SUSPENSION - SAILLIE
DECKENROSETTE - AUFPUTZ
CAIXA DE ALIMENTAÇÃO - SALIENTE
BASE DE TECHO - SUPERFICIE



13 - REBA D/I LED

CEILING ROSE - SURFACE MOUNTED
PATÈRE DE SUSPENSION - SAILLIE
DECKENROSETTE - AUFPUTZ
CAIXA DE ALIMENTAÇÃO - SALIENTE
BASE DE TECHO - SUPERFICIE



14 - REBA D/I LED

CEILING ROSE - SURFACE MOUNTED
PATÈRE DE SUSPENSION - SAILLIE
DECKENROSETTE - AUFPUTZ
CAIXA DE ALIMENTAÇÃO - SALIENTE
BASE DE TECHO - SUPERFICIE

