



LED



Norms: EN 60598-1, EN 60598-2-2



PRODUCT DESCRIPTION

Areas of Application: Commercial and Business areas, Public buildings, Housing, Offices, Hotel and Restaurant services, Art and Culture spaces.

Mounting: Ceiling recessed.

Light Distribution: Direct.

Light Source: LED 4000K, CRI>80, 50.000h life (@L80, B10, Ta 25 C).

Control Gear: LED driver, 220-240VAC-50/60Hz.

Materials: Body: Extruded aluminium profile.

Surface Finish: Anodised in natural colour.

Fixing system: Brackets.

bGLARE - Microprismatic diffuser (middle)

LAMP	UGR	W	lm	lm/W	η(%)	AxBxC (mm)	█	K1	K3	kg	HF	DALI
LED	≤19	24	3039	80	63	842x77x80	842x71	-	-	2,5	90345.L130.E	90345.L130.H
	≤19	30	4052	88	65	1122x77x80	1122x71	-	-	3,0	90345.L140.E	90345.L140.H
	≤19	37	5065	88	64	1402x77x80	1402x71	•	•	3,5	90345.L150.E	90345.L150.H
	≤19	42	6078	91	63	1682x77x80	1682x71	•	•	5,0	90345.L160.E	90345.L160.H
	-	49	7091	93	64	1964x77x80	1964x71	•	•	5,5	90345.L170.E	90345.L170.H
	-	61	8104	85	64	2244x77x80	2244x71	•	•	6,0	90345.L180.E	90345.L180.H
	-	67	9117	88	65	2524x77x80	2524x71	•	•	6,5	90345.L190.E	90345.L190.H
	-	74	10130	88	64	2804x77x80	2804x71	•	•	7,0	90345.L100.E	90345.L100.H

Add suffix to order: █ Start - 00000.0000.0.0049 █ End - 00000.0000.0.0050

bLINE - Opal polycarbonate diffuser (middle)

LAMP	UGR	W	lm	lm/W	η(%)	AxBxC (mm)	█	K1	K3	kg	HF	DALI
LED	≤25	30	3870	84	65	842x77x80	842x71	-	-	2,5	90200.L130.E	90200.L130.H
	≤25	39	5460	90	68	1122x77x80	1122x71	-	-	3,0	90200.L140.E	90200.L140.H
	≤25	47	6450	88	64	1402x77x80	1402x71	•	•	3,5	90200.L150.E	90200.L150.H
	≤25	56	7740	90	65	1682x77x80	1682x71	•	•	5,0	90200.L160.E	90200.L160.H
	-	64	9030	95	67	1964x77x80	1964x71	•	•	5,5	90200.L170.E	90200.L170.H
	-	77	10320	87	65	2244x77x80	2244x71	•	•	6,0	90200.L180.E	90200.L180.H
	-	86	11610	89	66	2524x77x80	2524x71	•	•	6,5	90200.L190.E	90200.L190.H
	-	94	12900	88	64	2804x77x80	2804x71	•	•	7,0	90200.L100.E	90200.L100.H

Add suffix to order: █ Start - 00000.0000.0.0049 █ End - 00000.0000.0.0050

Please note:

- To complete a line, start kit will be necessary. Please order separately.
- Recessed dimensions without end caps, please add 8mm to complete cutting dimensions.

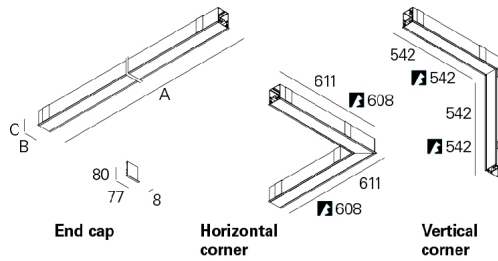
Example code for order: 90345.L150.E.0049 (START) + 90345.L150.E (MIDDLE) + 90345.L150.E.0050 (END) + 3000 + 921400 + (2x) 9460 + (2x) 965200 + (2x) 930500 + (3x) 955000 + K3 (OPTIONS)

We reserve the right to make technical changes without prior notice. Electrical/Optical data are subjected to a tolerance of +/-10%.

COLOUR / FINISH

Code	Description
□ W	White
■ B	Black

DIMENSIONS



OPTIONS

Colour temperature



3000K
Tunable white

Order code
3000
T000

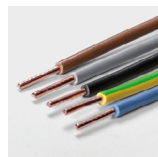
Start Kit



Start kit
• Two end caps included.

Order code
921400

Through-wiring



1,5 mm² through-wiring
3 x 1,5 mm²
5 x 1,5 mm²
7 x 1,5 mm²
9 x 1,5 mm²
2,5 mm² through-wiring
3 x 2,5 mm²
5 x 2,5 mm²
7 x 2,5 mm²
9 x 2,5 mm²

Order code
9456
9457
9460
9486
9458
9459
9461
9487

Connectors



KIT 7-pole WAGO (male and female)
Connector 7-pole WAGO male
Connector 7-pole WAGO female

Order code
965200
965201
965202

Body connector KIT



Body connector
• Galvanised connector, includes screws.

Order code
930500

Light corners (bGLARE)



	Order code
Horizontal corner 30W HF	90345.H210.E
30W DALI	90345.H210.H
Vertical corner 30W HF	90345.V210.E
30W DALI	90345.V210.H

• LED light corner luminaire includes complete gear tray with non-Dimmable or DALI LED driver and bGLARE polycarbonate diffuser.

Light corners (bLINE)



	Order code
Horizontal corner 39W HF	90200.H210.E
39W DALI	90200.H210.H
Vertical corner 39W HF	90200.V210.E
39W DALI	90200.V210.H

• LED light corner luminaire includes complete gear tray with non-Dimmable or DALI LED driver and bGLARE polycarbonate diffuser.

Blank parts



	Order code
1,5m length	991800
3m length	991801

• Includes empty aluminium body and blanking cover.

We reserve the right to make technical changes without prior notice.
Electrical/Optical data are subjected to a tolerance of +/-10%.

Safety cable

Order code
955000



Steel safety cable

Low power version

Option supplied under request.



Emergency unit

Order code
K3
K1



Emergency unit 3 hours
Emergency unit 1 hour

• Includes test function by Telecommand signal.

Bespoke projects

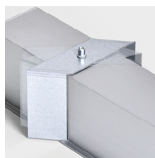
Option supplied under request.



DETAILS



Clip-in diffuser system

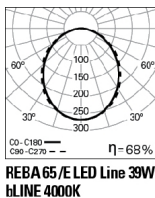
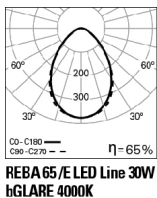


Bracket



End caps without visible screws

PHOTOMETRY



TO SPECIFY:

Linear recessed LED luminaire for continuous line and 77 mm width. Extruded aluminium profile, anodised in natural colour. Polycarbonate end caps without visible screws and polycarbonate bLINE or bGLARE diffuser. Standard version with 4000K, CRI>80 and 50.000h lifetime (@L80, B10, Ta 25 C). Optional 3000K, DALI dimmable driver, TunableWhite technology, connectors, light corners and 1 or 3 hours emergency unit. – as Indelague REBA 65 /E LED Line.

We reserve the right to make technical changes without prior notice. Electrical/Optical data are subjected to a tolerance of +/-10%.