

LED

Norms: EN 60598-1, EN 60598-2-2



PRODUCT DESCRIPTION

Areas of Application: Commercial and Business areas, Public buildings, Housing, Offices, Hotel and Restaurant services, Art and Culture spaces.

Mounting: Ceiling recessed.

Light Distribution: Direct.

Light Source: LED 4000K, CRI>80, 50.000h life (@L80, B10, Ta 25 C).

Optical System: Diffuser: Polycarbonate

Control Gear: Not included.

Wiring: Pre-wired 1m long cable H05VV-F.

Materials: Body: Aluminium.

Surface Finish: Powder coated.

DOZ - Opal polycarbonate diffuser

LED	W	Lm	mA	V	η(%)	AxB (mm)	Ø	Kg	ORDER CODE
	1	101	350	3	33	Ø53x47	Ø44	0,2	90062.L101.E
	3	187	700	4	31	Ø53x47	Ø44	0,2	90062.L103.E

DOZ

• To complete the product add control gear. Please order separately.

COLOUR / FINISH

Code	Description
<input type="checkbox"/> W	White **
<input type="checkbox"/> G	Grey **
<input type="checkbox"/> B	Black **

DETAILS



Downlight and concrete box detail

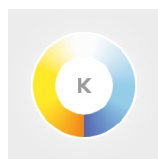
** Other colours under request

Example code for order: 90062.L103.E (ORDER CODE) + W (COLOUR/FINISH) + 3000 + 970200 + D3-1 (OPTIONS)

We reserve the right to make technical changes without prior notice. Electrical/Optical data are subjected to a tolerance of +/-10%.

OPTIONS

Colour temperature



3000K
5700K

Order code
3000
5000

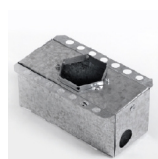
Control gear



LED Driver 350mA for 1 downlight 1W
LED Driver 700mA for 1 downlight 3W

Order code
D1-1
D3-1

Installation housing



Installation housing for concrete

Order code
970200

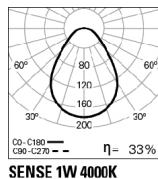
IP (Ingress protection)



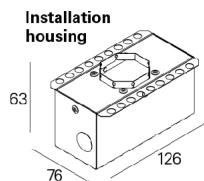
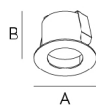
Versão IP20/65
Option supplied under request.

Order code

PHOTOMETRY



DIMENSIONS



TO SPECIFY:

Circular LED recessed downlight. Aluminium body, powder coated in epoxy polyester and opal polycarbonate DOZ diffuser. Standard total luminous flux of 101 or 187 lm, 4000K, CRI>80 and 50.000h lifetime (@L80, B10, Ta 25 C). Optional IP20/65 version, 3000K or 5700K and installation housing for concrete. - as Indelague SENSE

We reserve the right to make technical changes without prior notice.
Electrical/Optical data are subjected to a tolerance of +/-10%.