

Norms: EN 60598-1, EN 60598-2-1



PRODUCT DESCRIPTION

Areas of Application: Commercial and Business areas, Public buildings, Housing, Offices, Hotel and Restaurant services, Art and Culture spaces.

Mounting: Wall Mounted.

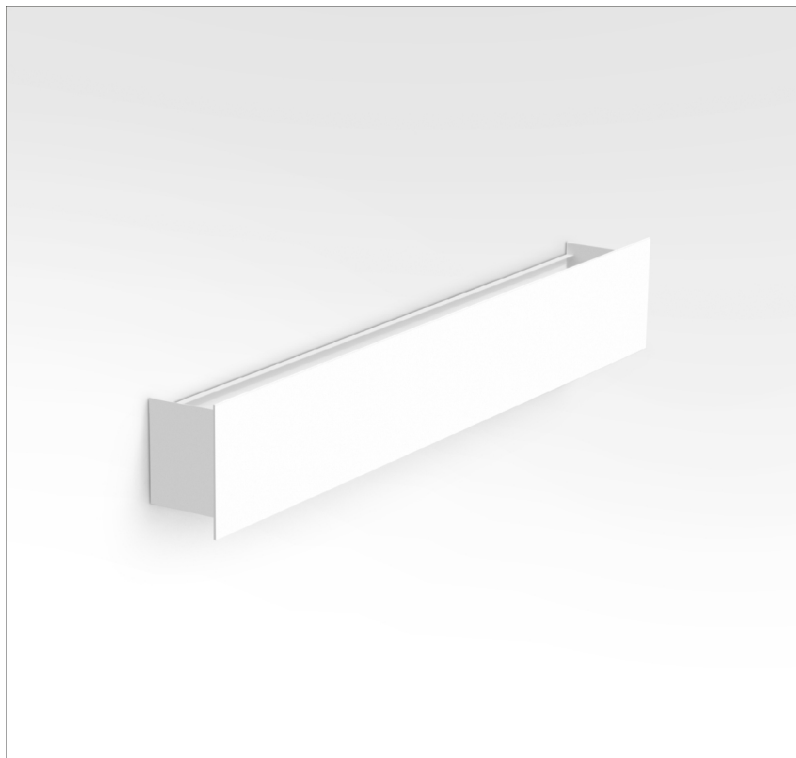
Light Distribution: Direct/Indirect.

Light Source: T5 (G5) lamp.

Control Gear: Electronic equipment, 220-240VAC-50/60Hz.

Materials: Body: Steel sheet.

Surface Finish: Powder coated.



Direct/Indirect

	LAMP*		W	AxBxC (mm)	Kg	HF	DSI	DALI
	T5	G5	1x14	620x69x100	2,2	90013.P114.A	90013.P114.C	90013.P114.D
		G5	1x21	920x69x100	3	90013.P121.A	90013.P121.C	90013.P121.D
		G5	1x24	620x69x100	2,2	90013.P124.A	90013.P124.C	90013.P124.D
		G5	1x28	1220x69x100	4,5	90013.P128.A	90013.P128.C	90013.P128.D
		G5	1x35	1520x69x100	4,9	90013.P135.A	90013.P135.C	90013.P135.D
		G5	1x39	920x69x100	3	90013.P139.A	90013.P139.C	90013.P139.D
		G5	1x49	1520x69x100	4,9	90013.P149.A	90013.P149.C	90013.P149.D
		G5	1x54	1220x69x100	4,5	90013.P154.A	90013.P154.C	90013.P154.D
		G5	1x80	1520x69x100	4,9	90013.P180.A	90013.P180.C	90013.P180.D

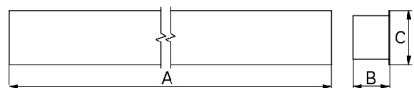
COLOUR / FINISH

Code	Description
W	White (RAL 9016)
B	Black (RAL 9005)
G	Grey (RAL 9006)

OPTIONS

Code	Description
DOP	Opal polycarbonate diffuser (not available for 54/80W).
--	Lamps as optional.

DIMENSIONS



TO SPECIFY:

Wall mounted direct/indirect architectural luminaire, suitable for T5(G5) lamp. Optional opal polycarbonate diffuser and dimmable versions - as Roxo Lighting SLIM.

* Lamp not included.

Example code for order: 90013.P114.D (DALI) + W (COLOUR/FINISH) + DOP (OPTIONS)

We reserve the right to make technical changes without prior notice. Electrical/Optical data are subjected to a tolerance of +/-10%.