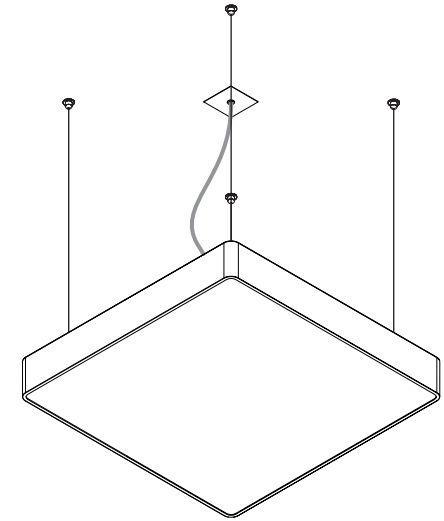


SPA LED SUSPENDED | SUSPENDU | PENDELVERSION | SUSPensa | SUSPENDIDO

EN INSTALLATION INSTRUCTIONS
FR INSTRUCTIONS D'INTALLATION
DE INSTALLATIONSANLEITUNG
PT INSTRUÇÕES DE MONTAGEM
ES INSTRUCCIONES DE MONTAJE



SPA LED



EN WARNING: THE LIGHT SOURCE CONTAINED IN THE LUMINAIRE SHOULD BE REPLACED ONLY BY THE MANUFACTURER. DO NOT USE THIS EQUIPMENT IN AREAS CONTAINING CHEMICAL AGENTS: ACIDS, SOLVENTS, PAINTS, SILICONES, COATINGS, ETC.

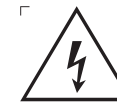
FR AVERTISSEMENT: LA SOURCE DE LUMIÈRE CONTENUE DANS LA LUMINAIRE DOIT ÊTRE REMPLACÉE PAR LE FABRICANT. EN CAS D'ANOMALIE DÉTECTÉE, CONTACTEZ LE FABRICANT. NE PAS UTILISER L'EQUIPEMENT DANS LES ZONES QUI CONTIENNENT DES AGENTS CHIMIQUES: ACIDES, SOLVANTS, PEINTURES, SILICONES, VERNIS, ETC.

DE WARNUNG: DIE IN DER LEUCHTE ENTHALTENE LICHTQUELLE SOLLTE NUR VOM HERSTELLER ERSETZT WERDEN. VERWENDEN SIE DIESES GERÄT NICHT IN BEREICHEN MIT CHEMISCHEN MITTELN: SÄUREN, LÖSUNGSMITTEL, FARBEN, SILIKONE, BESCHICHTUNGEN ETC.

PT ATENÇÃO: A FONTE DE LUZ CONTIDA NA LUMINÁRIA DEVE SER SUBSTITUÍDA UNICAMENTE PELO FABRICANTE. QUALQUER ANOMALIA DETECTADA CONTACTAR O FABRICANTE. NÃO UTILIZAR O EQUIPAMENTO EM ZONAS QUE CONTENHAM AGENTES QUÍMICOS: ÁCIDOS, SOLVENTES, TINTAS, SILICONES, VERNIZES, ETC.

ES ATENCIÓN: LA FUENTE DE LUZ CONTENIDA EN LA LUMINARIA DEBE SER SUSTITUIDA ÚNICAMENTE POR EL FABRICANTE. CUALQUIER ANOMALÍA DETECTADA CONTACTAR CON EL FABRICANTE. NO UTILIZAR

LA LUMINARIA EN ZONAS QUE CONTENGAN AGENTES QUÍMICOS: ÁCIDOS, DISOLVENTES, PINTURAS, SILICONAS, BARNICES, ETC."



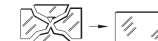
EN CAUTION, RISK OF ELECTRIC SHOCK.

FR ATTENTION, RISQUE DE CHOC ÉLECTRIQUE.

DE ACHTUNG, GEFAHR EINES STROMSCHLAGS.

PT CUIDADO, RISCO DE CHOQUE ELÉTRICO.

ES PRECAUCIÓN, RIESGO DE DESCARGA ELÉCTRICA.



EN IF GLASS OR DIFFUSER BREAK OR CRACK, PLEASE REPLACE IT.

FR EN CAS DE CASSE OU FISSUREMENT, REMPLACEZ LE VERRE OU DIFFUSEUR.

DE BEI BRUCH ODER RISS, GLAS ODER DIFFUSER ERSETZEN.

PT EM CASO DE QUEBRA OU FISSURA, SUBSTITUIR O VIDRO OU DIFUSOR.

ES EN CASO DE ROTURA O FISURA, SUSTITUIR EL VIDRIO O DIFUSOR.



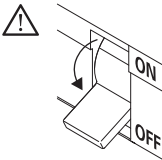
EN Read carefully the general terms and conditions of use and environmental concern with recycling attached. | **FR** Lire attentivement les conditions générales d'utilisations et de préoccupation environnementales avec les recyclage ci-joint. | **DE** Bitte lesen Sie de Allgemeinen Geschäftsbedingungen und Umweltbewusstsein über Recycling angeschlossen. | **PT** Ler atentamente as condições gerais de uso e preocupação ambiental com a reciclagem, em anexo. | **ES** Lea atentamente las condiciones generales de uso y preocupación ambiental con el reciclaje adjuntos.

EN We reserve the right to make changes on technical specifications, design and installation leaflet without prior notice. | **FR** Sous réserve de modifications au niveau de la conception, des spécifications techniques et de la notice. | **DE** Änderungen von Entwurf, technischen Daten und Bedienungsanleitungen bleiben vorbehalten. | **PT** O fabricante reserva-se no direito de realizar modificações no desenho, especificações técnicas e folheto, sem aviso prévio. | **ES** El fabricante se reserva el derecho de realizar modificaciones en el diseño, las especificaciones técnicas y el folleto.

SPA LED

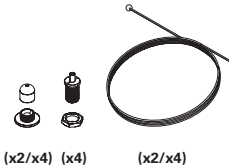


EN SUSPENDED VERSION
FR VERSION SUSPENDU
DE PENDELVERSION
PT VERSÃO SUSPENSA
ES VERSIÓN Suspendido



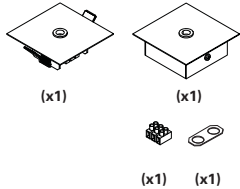
EN ACCESSORIES OPTION
FR OPTION ACCESSOIRES
DE OPTION ZUBEHÖR
PT OPÇÃO ACESSÓRIOS
ES OPCIÓN ACCESORIOS

SUSPENSION OPTION
OPTION PATÈRE DE SUSPENSION
OPTIONEN AUFHÄNGUNG
OPÇÃO SUSPENSÃO
OPCIÓN SUSPENSIÓN

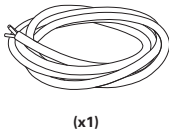


CEILING ROSE OPTION
OPTION PATÈRE DE SUSPENSION
OPTIONEN DECKENBALDACHIN
OPÇÃO CAIXA DE ALIMENTAÇÃO
OPCIÓN BASE DE TECHO

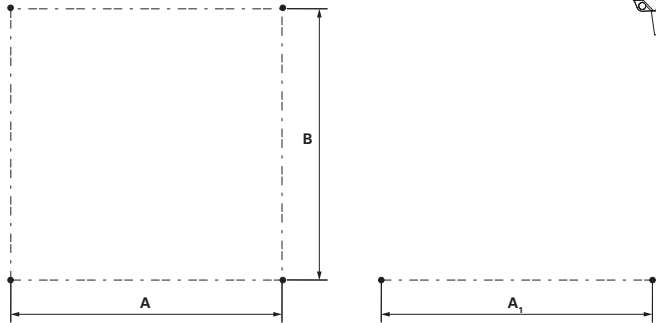
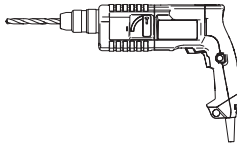
Recessed or surface mounted
Encastré ou en saillie
Vertieft oder hervorstehen
Encastrar ou saliente
Empotrar o superficie



CURRENT SUPPLY CABLE OPTION
OPTION CÂBLE D'ALIMENTATION
OPTIONEN EINSPEISUNGSKABEL
OPÇÃO CABO DE ALIMENTAÇÃO
OPCIÓN CABLE DE ALIMENTACIÓN

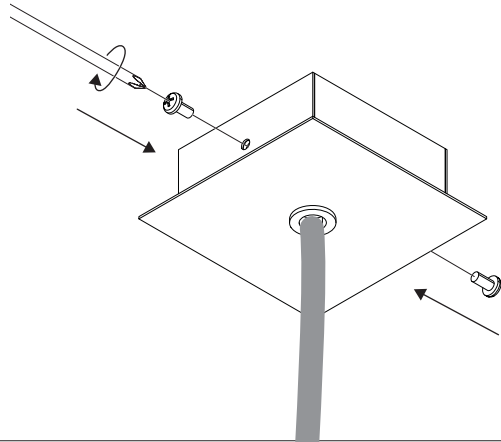


(mm)	I AxB (mm)	Y A ₁ (mm)
875x315x88	737x180	737
1150x315x88	1000x180	1000
1425x315x88	1200x180	1200
590x590x88	450x450	450



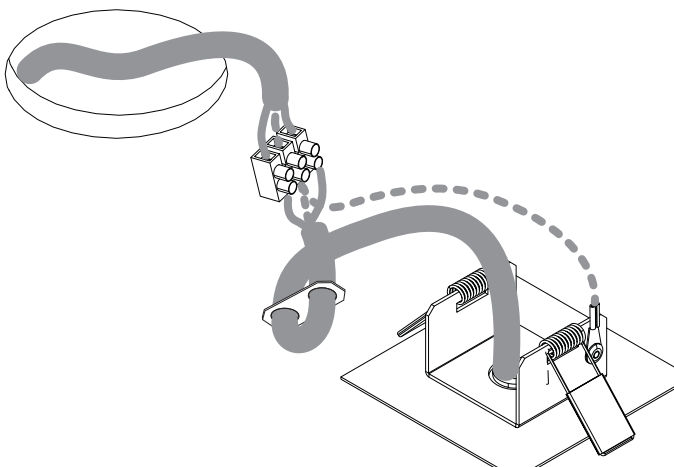
21 - SPA LED

CEILING ROSE - SURFACE MOUNTED
PATÈRE DE SUSPENSION - SAILLIE
DECKENROSETTE - AUFPUTZ
CAIXA DE ALIMENTAÇÃO - SALIENTE
BASE DE TECHO - SUPERFICIE

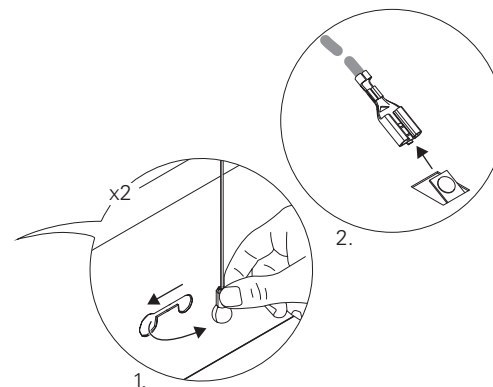
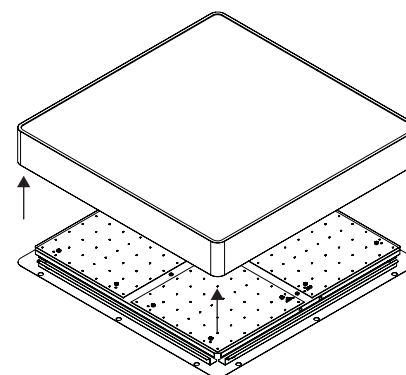


19 - SPA LED

CEILING ROSE - RECESSED
PATÈRE DE SUSPENSION - ENCASTRÉ
DECKENROSETTE - VERTIEFT
CAIXA DE ALIMENTAÇÃO - ENCASTRAR
BASE DE TECHO - EMPOTRAR

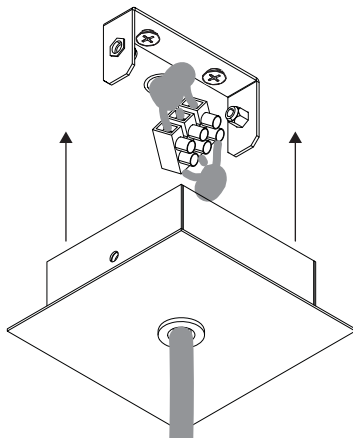


1 - SPA LED

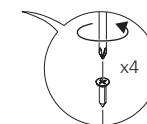
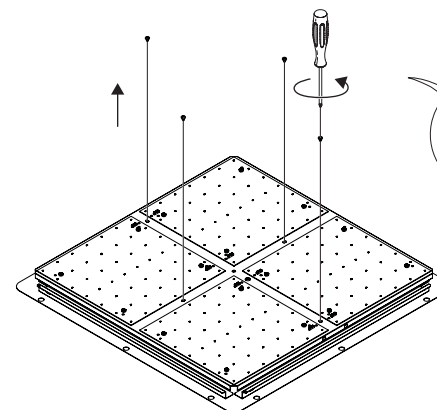


20 - SPA LED

CEILING ROSE - SURFACE MOUNTED
PATÈRE DE SUSPENSION - SAILLIE
DECKENROSETTE - AUFPUTZ
CAIXA DE ALIMENTAÇÃO - SALIENTE
BASE DE TECHO - SUPERFICIE

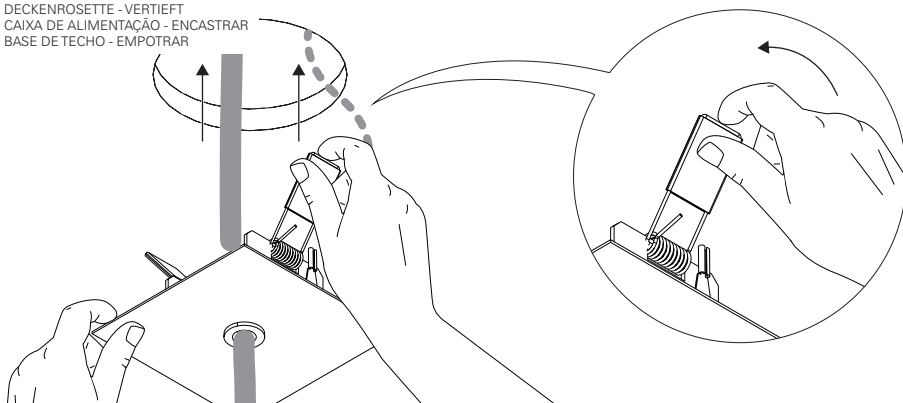


2 - SPA LED

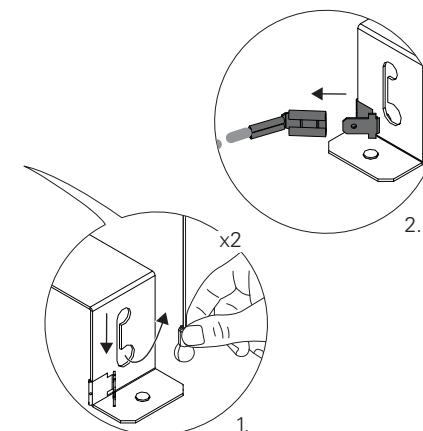
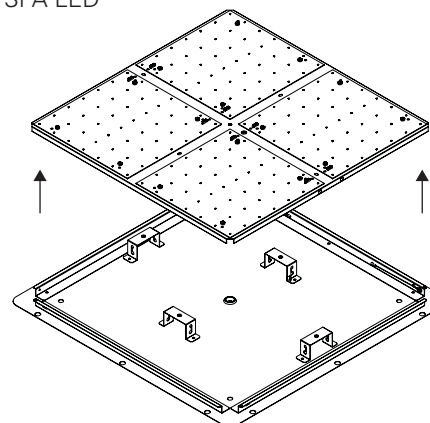


20 - SPA LED

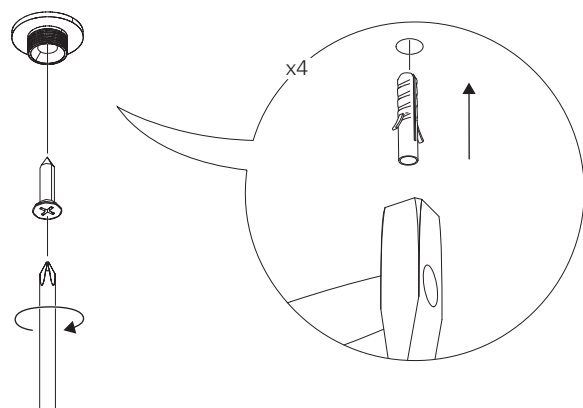
CEILING ROSE - RECESSED
PATÈRE DE SUSPENSION - ENCASTRÉ
DECKENROSETTE - VERTIEFT
CAIXA DE ALIMENTAÇÃO - ENCASTRAR
BASE DE TECHO - EMPOTRAR



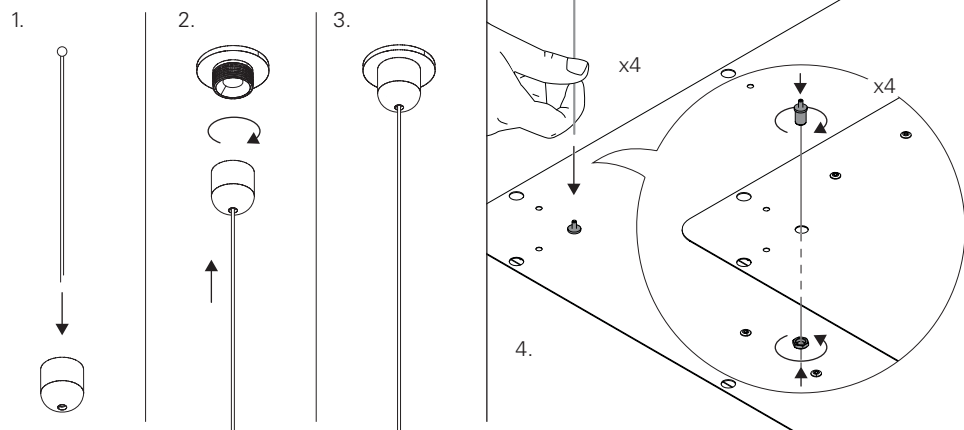
3 - SPA LED



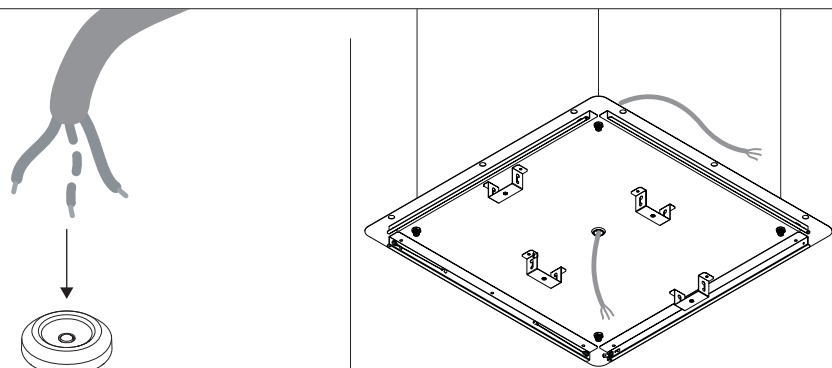
4 - SPA LED



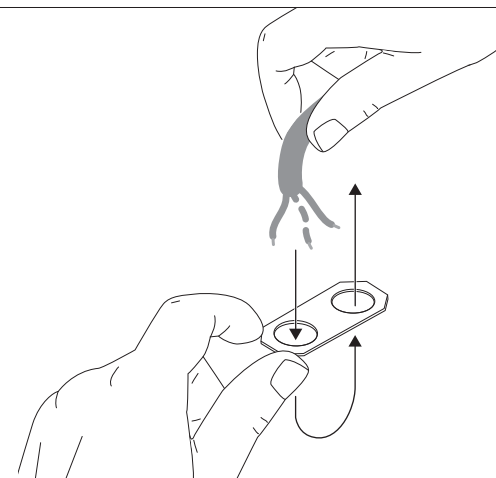
5 - SPA LED



6 - SPA LED

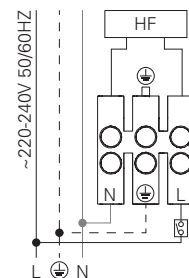


16 - SPA LED



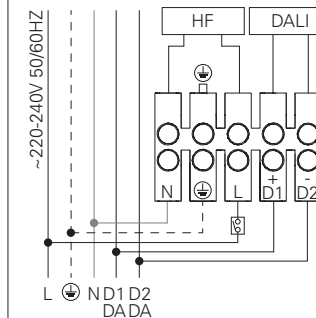
17 - SPA LED HF

STANDARD POWER SUPPLY
CÂBLAGE STRANDARD
STANDARD VERDRAHTUNG
ALIMENTAÇÃO ELÉCTRICA STANDARD
ELECTRIFICACIÓN ESTÁNDAR



DALI

DIMMABLE POWER SUPPLY
CÂBLAGE AVEC GRADATION
DIMMBARE VERDRAHTUNG
ALIMENTAÇÃO ELÉCTRICA COM REGULAÇÃO
ELECTRIFICACIÓN CON REGULACIÓN



BLUE - N (NEUTRAL)
GREEN AND YELLOW - ⊕ (EARTH)
BROWN - L (LIVE)
GREY - D1+
BLACK - D2-

BLEU - N (NEUTRE)
VERT ET JAUNE - ⊕ (TERRE)
MARRON - L (PHASE)
GRIS - D1+
NOIR - D2-

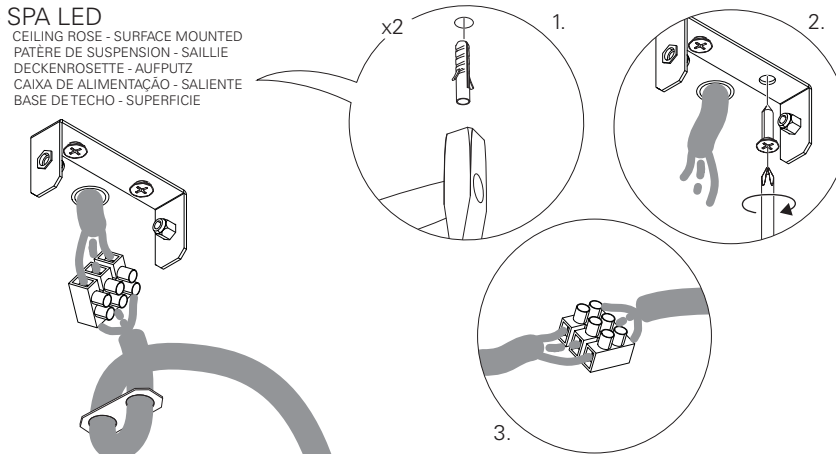
BLAU - N (NEUTRAL)
GRÜN UND GELB - ⊕ (ERDE)
BRAUN - L (PHASE)
GRAU - D1+
SCHWARZ - D2-

AZUL - N (NEUTRO)
VERDE E AMARELO - ⊕ (TERRA)
CASTANHO - L (FASE)
CINZA - D1+
PRETO - D2-

AZUL - N (NEUTRAL)
VERDE Y AMARILLO - ⊕ (TIERRA)
MARRÓN - L (FASE)
GRIS - D1+
NEGRO - D2-

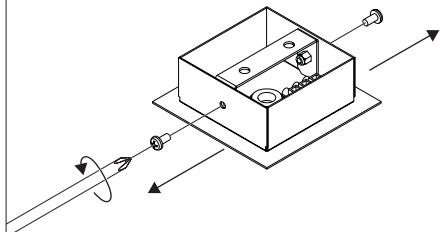
18 - SPA LED

CEILING ROSE - SURFACE MOUNTED
PATÈRE DE SUSPENSION - SAILLIE
DECKENROSETTE - AUFPUTZ
CAIXA DE ALIMENTAÇÃO - SALIENTE
BASE DE TÊCHO - SUPERFÍCIE



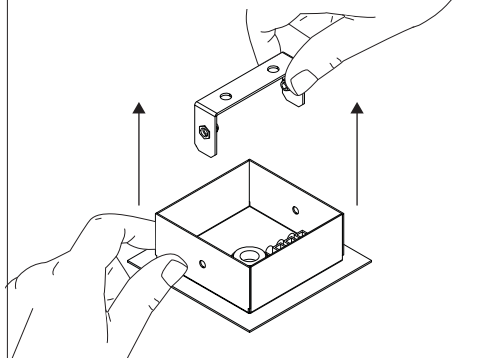
13 - SPA LED

CEILING ROSE - SURFACE MOUNTED
PATÈRE DE SUSPENSION - SAILLIE
DECKENROSETTE - AUFPUTZ
CAIXA DE ALIMENTAÇÃO - SALIENTE
BASE DE TETO - SUPERFICIE



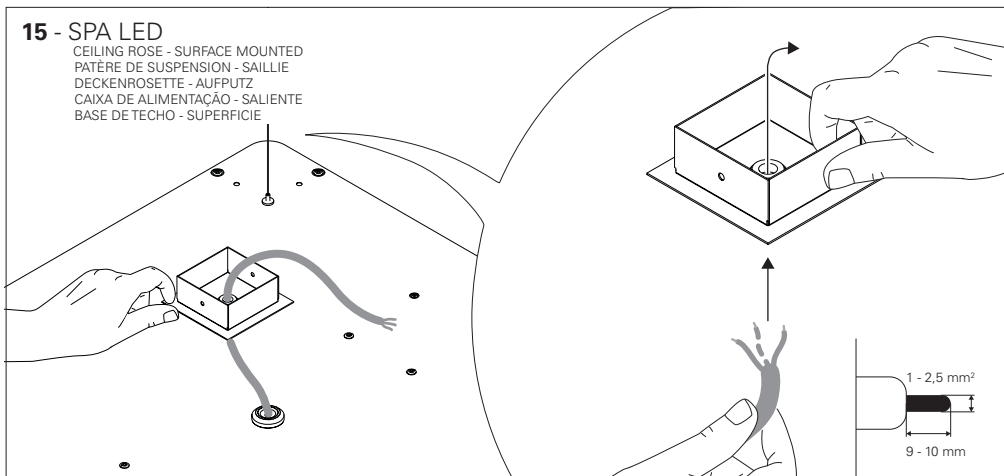
14 - SPA LED

CEILING ROSE - SURFACE MOUNTED
PATÈRE DE SUSPENSION - SAILLIE
DECKENROSETTE - AUFPUTZ
CAIXA DE ALIMENTAÇÃO - SALIENTE
BASE DE TETO - SUPERFICIE



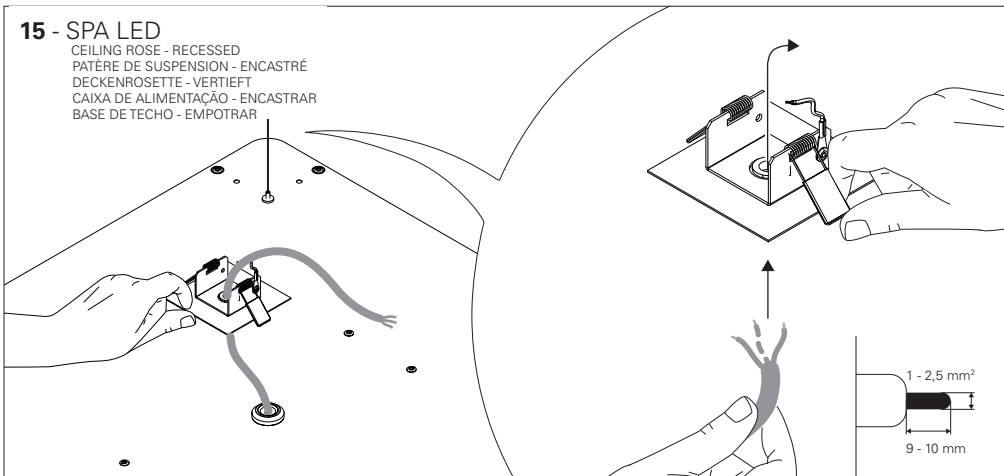
15 - SPA LED

CEILING ROSE - SURFACE MOUNTED
PATÈRE DE SUSPENSION - SAILLIE
DECKENROSETTE - AUFPUTZ
CAIXA DE ALIMENTAÇÃO - SALIENTE
BASE DE TETO - SUPERFICIE

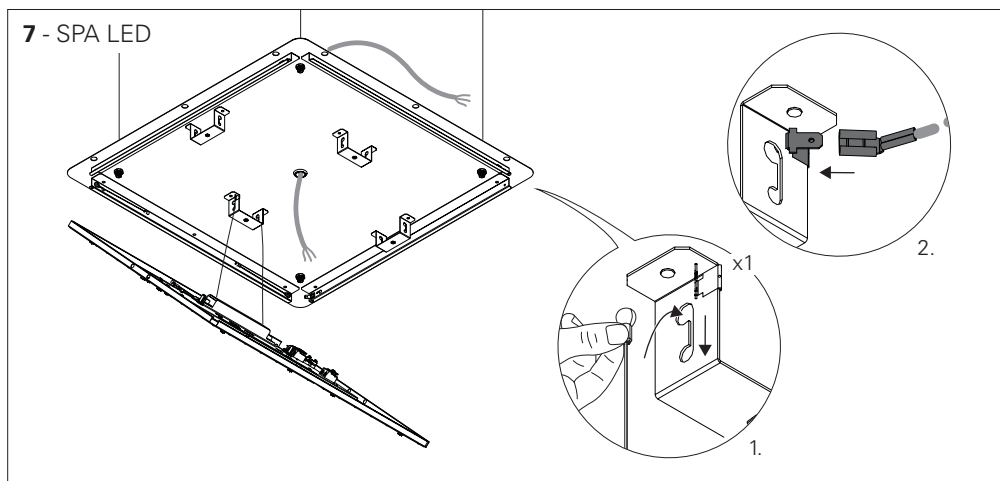


15 - SPA LED

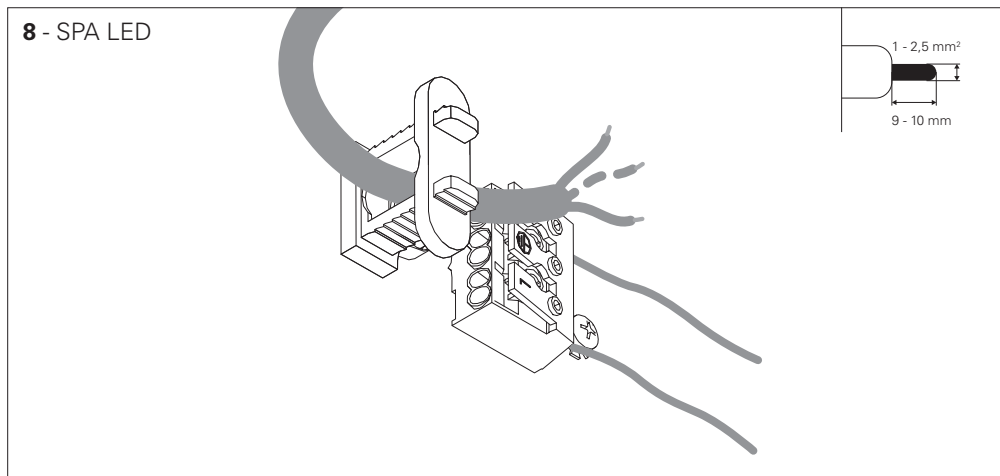
CEILING ROSE - RECESSED
PATÈRE DE SUSPENSION - ENCASTRÉ
DECKENROSETTE - VERTIEFT
CAIXA DE ALIMENTAÇÃO - ENCASTRAR
BASE DE TETO - EMPOTRAR



7 - SPA LED

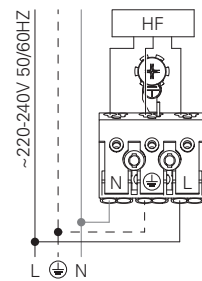


8 - SPA LED



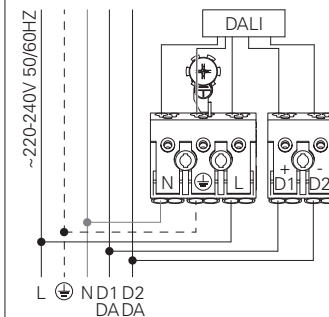
9.1 - SPA LED HF

STANDARD POWER SUPPLY
CÂBLAGE STRANDARD
STANDARD VERDRÄHTUNG
ALIMENTAÇÃO ELÉCTRICA STANDARD
ELECTRIFICACIÓN ESTÁNDAR



DALI

DIMMABLE POWER SUPPLY
CÂBLAGE AVEC GRADATION
DIMMBARE VERDRÄHTUNG
ALIMENTAÇÃO ELÉCTRICA COM REGULAÇÃO
ELECTRIFICACIÓN CON REGULACIÓN



BLUE - N (NEUTRAL)
GREEN AND YELLOW - ⊕ (EARTH)
BROWN - L (LIVE)
WHITE - D1+
BLACK - D2-

BLEU - N (NEUTRE)
VERT ET JAUNE - ⊕ (TERRE)
MARRON - L (PHASE)
BLANC - D1+
NOIR - D2-

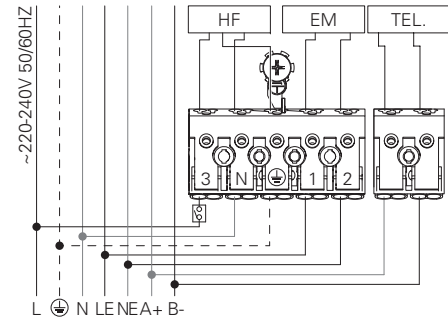
BLAU - N (NEUTRAL)
GRÜN UND GELB - ⊕ (ERDE)
BRAUN - L (PHASE)
WEISS - D1+
SCHWARZ - D2-

AZUL - N (NEUTRO)
VERDE E AMARELO - ⊕ (TERRA)
CASTANHO - L (FASE)
BRANCO - D1+
PRETO - D2-

AZUL - N (NEUTRAL)
VERDE Y AMARILLO - ⊕ (TIERRA)
MARRÓN - L (FASE)
BLANCO - D1+
NEGRO - D2-

9.2 - SPA LED HF + EM + TEL.

POWER SUPPLY HF WITH EMERGENCY KIT AND TELECOMMAND
CABLAGE HF AVEC UNITE DE SECOURS ET TELECOMMANDE
VERDRAHTUNG FÜR HF MIT NOTLICHTEINSATZ UND TELEKOMMAND
ALIMENTAÇÃO ELÉCTRICA HF COM KIT EMERGÊNCIA E TELECOMANDO
ELECTRIFICACIÓN HF CON KIT DE EMERGENCIA Y TELEMANDABLE



BLUE - N (NEUTRAL)
GREEN AND YELLOW - (EARTH)
BROWN - L (LIVE)
GREY - LE (EMERGENCY LIVE)
BLACK - NE (EMERGENCY NEUTRAL)
RED - A+
BLACK - B-

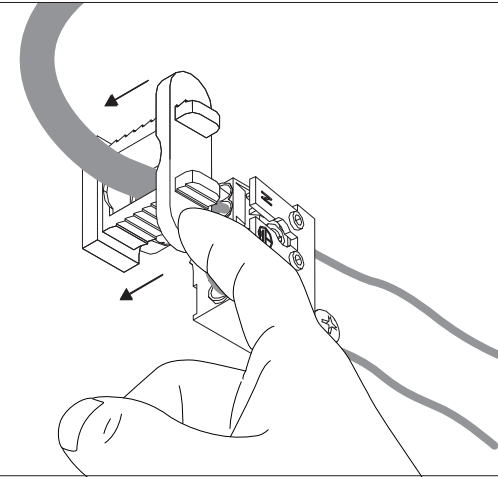
BLEU - N (NEUTRE)
VERT ET JAUNE - (TERRE)
MARRON - L (PHASE)
GRIS - LE (UNI. SECOURS PHASE)
NOIR - NE (UNI. SECOURS NEUTRE)
ROUGE - A+
NOIR - B-

BLAU - N (NEUTRAL)
GRÜN UND GELB - (ERDE)
BRAUN - L (PHASE)
GRAU - LE (NOTLICHT PHASE)
SCHWARZ - NE (NOTLICHT NEUTRAL)
ROT - A+
SCHWARZ - B-

AZUL - N (NEUTRO)
VERDE E AMARELO - (TERRA)
CASTANHO - L (FASE)
CINZA - LE (EMERGÊNCIA FASE)
PRETO - NE (EMERGÊNCIA NEUTRO)
VERMELHO - A+
PRETO - B-

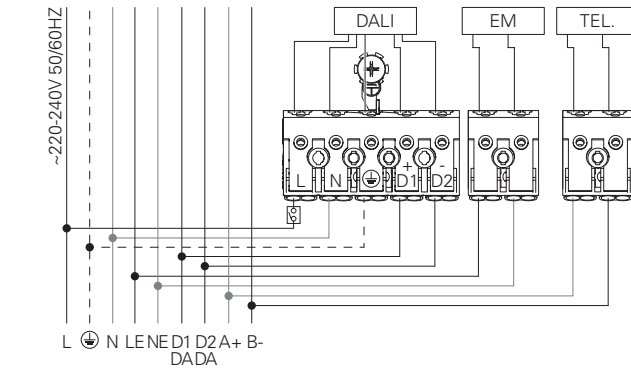
AZUL - N (NEUTRAL)
VERDE Y AMARILLO - (TIERRA)
MARRÓN - L (FASE)
GRIS - LE (EMERGENCIA FASE)
NEGRO - NE (EMERGENCIA NEUTRAL)
ROJO - A+
NEGRO - B-

10 - SPA LED



9.3 - SPA LED DALI + EM + TEL.

POWER SUPPLY HF WITH EMERGENCY KIT AND TELECOMMAND
CABLAGE HF AVEC UNITE DE SECOURS ET TELECOMMANDE
VERDRAHTUNG FÜR HF MIT NOTLICHTEINSATZ UND TELEKOMMAND
ALIMENTAÇÃO ELÉCTRICA HF COM KIT EMERGÊNCIA E TELECOMANDO
ELECTRIFICACIÓN HF CON KIT DE EMERGENCIA Y TELEMANDABLE



BLUE - N (NEUTRAL)
GREEN AND YELLOW - (EARTH)
BROWN - L (LIVE)
GREY - D1+
BLACK - D2-
BLUE - NE (EMERGENCY NEUTRAL)
BROWN - LE (EMERGENCY LIVE)
RED - A+
BLACK - B-

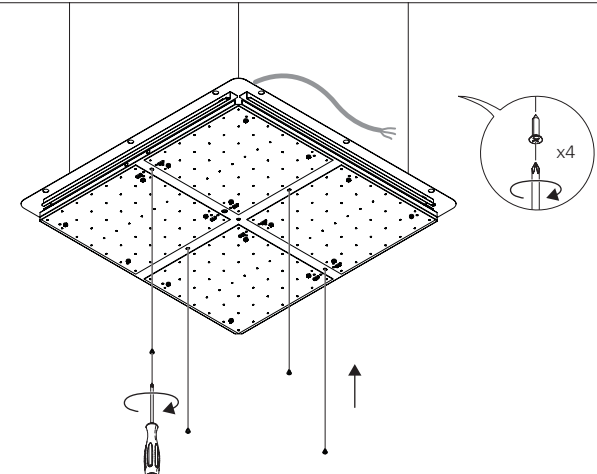
BLEU - N (NEUTRE)
VERT ET JAUNE - (TERRE)
MARRON - L (PHASE)
GRIS - D1+
NOIR - D2-
BLEU - NE (UNI. SECOURS NEUTRE)
MARRON - LE (UNI. SECOURS PHASE)
ROUGE - A+
NOIR - B-

BLAU - N (NEUTRAL)
GRÜN UND GELB - (ERDE)
BRAUN - L (PHASE)
GRAU - D1+
SCHWARZ - D2-
BLAU - NE (NOTLICHT NEUTRAL)
BRAUN - LE (NOTLICHT PHASE)
ROT - A+
SCHWARZ - B-

AZUL - N (NEUTRO)
VERDE E AMARELO - (TERRA)
CASTANHO - L (FASE)
CINZA - D1+
PRETO - D2-
AZUL - NE (EMERGÊNCIA NEUTRO)
CASTANHO - LE (EMERGÊNCIA FASE)
VERMELHO - A+
PRETO - B-

AZUL - N (NEUTRAL)
VERDE Y AMARILLO - (TIERRA)
MARRÓN - L (FASE)
GRIS - D1+
NEGRO - D2-
AZUL - NE (EMERGENCIA NEUTRAL)
MARRÓN - LE (EMERGENCIA FASE)
ROJO - A+
NEGRO - B-

11 - SPA LED



12 - SPA LED

