



Norms: EN 60598-1, EN 60598-2-2



## PRODUCT DESCRIPTION

**Areas of Application:** Commercial and Business areas, Public buildings, Offices, Schools, Corridors.

**Mounting:** Ceiling recessed.

**Light Distribution:** Direct.

**Control Gear:** Electronic equipment, 220-240VAC-50/60Hz.

**Materials:** Body: Steel sheet.

**Surface Finish:** Powder coated in white matt (RAL9016).

### 600x600 | PB - Polished double parabolic louvre

|  | LAMP* | UGR |      | W    | Lm/W | η(%) | AxBxC (mm) |         | Kg  | HF             | DSI            | DALI           |
|--|-------|-----|------|------|------|------|------------|---------|-----|----------------|----------------|----------------|
|  | T5    | ≤16 | G5   | 2x24 | 59   | 79   | 595x595x95 | 578x578 | 5,9 | 904U.224.79.A4 | 904U.224.79.84 | 904U.224.79.74 |
|  |       | ≤16 | G5   | 4x14 | 57   | 73   | 595x595x95 | 578x578 | 6,0 | 904U.414.79.A4 | 904U.414.79.84 | 904U.414.79.74 |
|  | TC-L  | ≤16 | 2G11 | 2x40 | 56   | 71   | 595x595x95 | 578x578 | 6,0 | 904U.240.79.A4 | 904U.240.79.84 | 904U.240.79.74 |
|  |       | ≤19 | 2G11 | 2x55 | 55   | 69   | 595x595x95 | 578x578 | 6,0 | 904U.255.79.A4 | 904U.255.79.84 | 904U.255.79.74 |

### 600x600 | PM - Satin double parabolic louvre

|  | LAMP* | UGR |      | W    | Lm/W | η(%) | AxBxC (mm) |         | Kg  | HF             | DSI            | DALI           |
|--|-------|-----|------|------|------|------|------------|---------|-----|----------------|----------------|----------------|
|  | T5    | ≤16 | G5   | 2x24 | 57   | 79   | 595x595x95 | 578x578 | 5,9 | 904U.224.93.A4 | 904U.224.93.84 | 904U.224.93.74 |
|  |       | ≤16 | G5   | 4x14 | 54   | 69   | 595x595x95 | 578x578 | 6,0 | 904U.414.93.A4 | 904U.414.93.84 | 904U.414.93.74 |
|  | TC-L  | ≤16 | 2G11 | 2x40 | 55   | 70   | 595x595x95 | 578x578 | 6,0 | 904U.240.93.A4 | 904U.240.93.84 | 904U.240.93.74 |
|  |       | ≤19 | 2G11 | 2x55 | 55   | 69   | 595x595x95 | 578x578 | 6,0 | 904U.255.93.A4 | 904U.255.93.84 | 904U.255.93.74 |

### 625x625 | PB - Polished double parabolic louvre

|  | LAMP* | UGR |      | W    | Lm/W | η(%) | AxBxC (mm) |         | Kg  | HF             | DSI            | DALI           |
|--|-------|-----|------|------|------|------|------------|---------|-----|----------------|----------------|----------------|
|  | T5    | ≤16 | G5   | 2x24 | 59   | 79   | 622x622x95 | 605x605 | 5,9 | 904V.224.79.A4 | 904V.224.79.84 | 904V.224.79.74 |
|  |       | ≤16 | G5   | 4x14 | 57   | 73   | 622x622x95 | 605x605 | 6,0 | 904V.414.79.A4 | 904V.414.79.84 | 904V.414.79.74 |
|  | TC-L  | ≤16 | 2G11 | 2x40 | 56   | 71   | 622x622x95 | 605x605 | 6,0 | 904V.240.79.A4 | 904V.240.79.84 | 904V.240.79.74 |
|  |       | ≤19 | 2G11 | 2x55 | 55   | 69   | 622x622x95 | 605x605 | 6,0 | 904V.255.79.A4 | 904V.255.79.84 | 904V.255.79.74 |

### 625x625 | PM - Satin double parabolic louvre

|  | LAMP* | UGR |      | W    | Lm/W | η(%) | AxBxC (mm) |         | Kg  | HF             | DSI            | DALI           |
|--|-------|-----|------|------|------|------|------------|---------|-----|----------------|----------------|----------------|
|  | T5    | ≤16 | G5   | 2x24 | 57   | 79   | 622x622x95 | 605x605 | 5,9 | 904V.224.93.A4 | 904V.224.93.84 | 904V.224.93.74 |
|  |       | ≤16 | G5   | 4x14 | 54   | 69   | 622x622x95 | 605x605 | 6,0 | 904V.414.93.A4 | 904V.414.93.84 | 904V.414.93.74 |
|  | TC-L  | ≤16 | 2G11 | 2x40 | 55   | 70   | 622x622x95 | 605x605 | 6,0 | 904V.240.93.A4 | 904V.240.93.84 | 904V.240.93.74 |
|  |       | ≤19 | 2G11 | 2x55 | 55   | 69   | 622x622x95 | 605x605 | 6,0 | 904V.255.93.A4 | 904V.255.93.84 | 904V.255.93.74 |

\*Lamp not included.

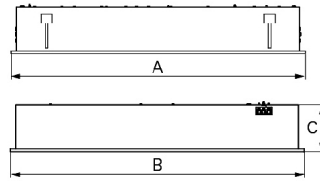
Example code for order: 904U.255.79.74 (DALI) + 955000 (OPTIONS)

We reserve the right to make technical changes without prior notice. Electrical/Optical data are subjected to a tolerance of +/-10%.

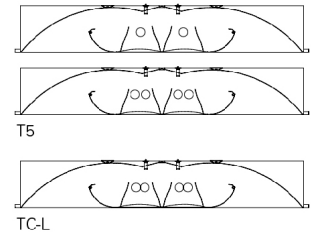
## OPTIONS

| Code   | Description                                 |
|--------|---|
| W3M    | Connector 3-pole wieland GST 18i3 male.     |
| W5M    | Connector 5-pole wieland GST 18i5 male.     |
| W5MD   | Connector 5-pole wieland GST 18i5 DIM male. |
| --     | Light and presence sensor.                  |
| CD     | Double switch.                              |
| 955000 | Steel safety cable.                         |
| K3     | Emergency unit 3 hours.                     |
| K1     | Emergency unit 1 hour.                      |
| --     | Lamps as optional.                          |

## DIMENSIONS

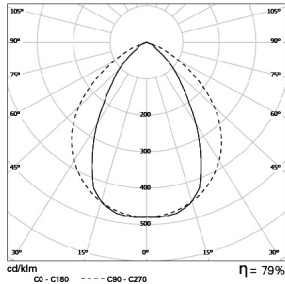


## LAMPS CONFIGURATION

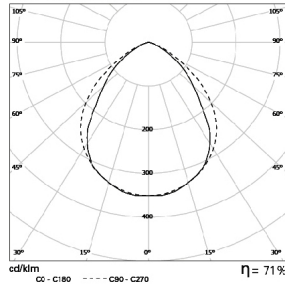


## PHOTOMETRY

**TBI DUO 2x24W PB**  
Lamp: 2 x 24W/840 HO



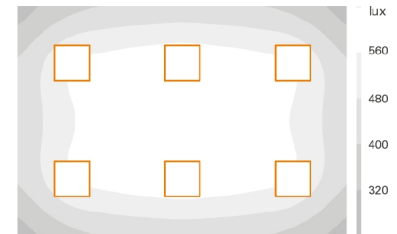
**TBI DUO 2x40W PB**  
Lamp: 2 x TC-L 40W/840



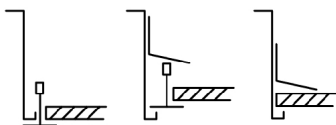
## PERFORMANCE

### TBI Duo PM

LAMPS: 4 x 14W  
SPACING: 6m x 4,2m  
CEILING HEIGHT: 2,8m  
MAINTENANCE: 0,8  
REFLECTANCE: 20/70/50  
WORKING PLANE: 0,8m  
ILLUMINANCE: 520 lux



## FIXING SYSTEMS



Lay-in version for exposed T grids 15/24mm.

Pull-up version with brackets for exposed T grids 15/24mm.

Pull-up version with brackets for plasterboard ceilings.

### TO SPECIFY:

Recessed direct/indirect T5(G5) or TC-L luminaire 600x600mm for modular ceilings. Twin double parabolic polished/satin high output aluminium louvre and microperforated side wings, available for linear fluorescent 14/24W (T5) or compact fluorescent lamp 40/55W (TC-L). Suitable for lay-in into exposed T grids or pull up version with brackets. Optional light/presence sensor, dimmable versions, double switch and 1 or 3 hours emergency available – as Roxo Lighting TBI Duo.

We reserve the right to make technical changes without prior notice. Electrical/Optical data are subjected to a tolerance of +/-10%.