



Norms: EN 60598-1, EN 60598-2-2



PRODUCT DESCRIPTION

Areas of Application: Commercial and Business areas, Public buildings, Offices, Schools, Corridors.

Mounting: Ceiling recessed.

Light Distribution: Direct.

Control Gear: Electronic equipment, 220-240VAC-50/60Hz.

Materials: Body: Steel sheet.

Surface Finish: Powder coated in white matt (RAL9016).

600x600 | PB - Polished double parabolic louvre

	LAMP*	UGR		W	Lm/W	η(%)	AxBxC (mm)		Kg	HF	DSI	DALI
	T5	≤19	G5	4x14	48	62	595x595x95	578x578	6,0	904W.414.79.A4	904W.414.79.84	904W.414.79.74
	TC-L	≤22	2G11	2x40	53	68	595x595x95	578x578	6,0	904W.240.79.A4	904W.240.79.84	904W.240.79.74
		≤22	2G11	2x55	48	60	595x595x95	578x578	6,0	904W.255.79.A4	904W.255.79.84	904W.255.79.74

600x600 | PM - Satin double parabolic louvre

	LAMP*	UGR		W	Lm/W	η(%)	AxBxC (mm)		Kg	HF	DSI	DALI
	T5	≤19	G5	4x14	48	61	595x595x95	578x578	6,0	904W.414.93.A4	904W.414.93.84	904W.414.93.74
	TC-L	≤22	2G11	2x40	53	67	595x595x95	578x578	6,0	904W.240.93.A4	904W.240.93.84	904W.240.93.74
		≤22	2G11	2x55	46	58	595x595x95	578x578	6,0	904W.255.93.A4	904W.255.93.84	904W.255.93.74

625x625 | PB - Polished double parabolic louvre

	LAMP*	UGR		W	Lm/W	η(%)	AxBxC (mm)		Kg	HF	DSI	DALI
	T5	≤19	G5	4x14	48	62	622x622x95	605x605	6,0	904X.414.79.A4	904X.414.79.84	904X.414.79.74
	TC-L	≤22	2G11	2x40	53	68	622x622x95	605x605	6,0	904X.240.79.A4	904X.240.79.84	904X.240.79.74
		≤22	2G11	2x55	48	60	622x622x95	605x605	6,0	904X.255.79.A4	904X.255.79.84	904X.255.79.74

625x625 | PM - Satin double parabolic louvre

	LAMP*	UGR		W	Lm/W	η(%)	AxBxC (mm)		Kg	HF	DSI	DALI
	T5	≤19	G5	4x14	48	61	622x622x95	605x605	6,0	904X.414.93.A4	904X.414.93.84	904X.414.93.74
	TC-L	≤22	2G11	2x40	52	67	622x622x95	605x605	6,0	904X.240.93.A4	904X.240.93.84	904X.240.93.74
		≤22	2G11	2x55	46	58	622x622x95	605x605	6,0	904X.255.93.A4	904X.255.93.84	904X.255.93.74

*Lamp not included.

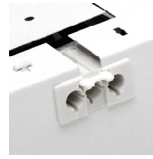
Example code for order: 904W.414.79.74 (DALI) + W5MD + 955000 (OPTIONS)

We reserve the right to make technical changes without prior notice.
Electrical/Optical data are subjected to a tolerance of +/-10%.

OPTIONS

Code	Description
W3M	Connector 3-pole wieland GST 18i3 male.
W5M	Connector 5-pole wieland GST 18i5 male.
W5MD	Connector 5-pole wieland GST 18i5 DIM male.
--	Light and presence sensor.
CD	Double switch.
955000	Steel safety cable.
K3	Emergency unit 3 hours.
K1	Emergency unit 1 hour.
--	Lamps as optional.

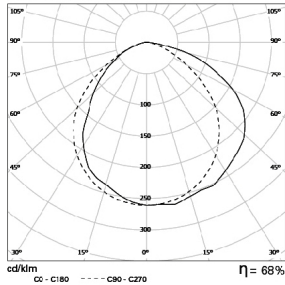
DETAILS



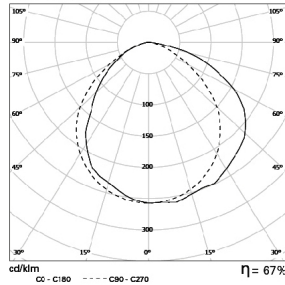
Side fixture connector on the luminaire

PHOTOMETRY

TBI Lateral 2x40W PB
Lamp: 2 x TC-L 40W/840



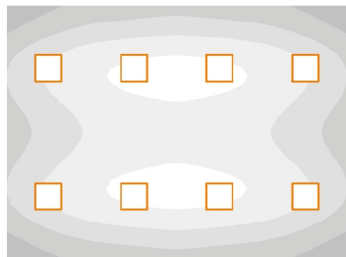
TBI Lateral 2x40W PM
Lamp: 2 x TC-L 40W/840



PERFORMANCE

TBI Lateral PB + TBI PB

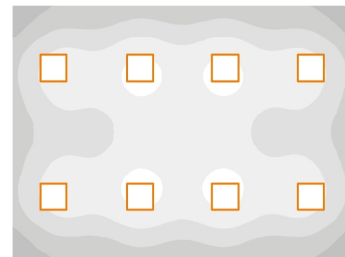
LAMPS: 4 x 14W
SPACING: 6m x 8m
CEILING HEIGHT: 3m
MAINTENANCE: 0,8
REFLECTANCE: 20/70/50
WORKING PLANE: 0,8m
ILLUMINANCE: 350 lux
WALL ILLUMINANCE: 190 lux



lux

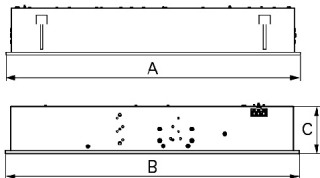
TBI PB

LAMPS: 3 x 14W
SPACING: 6m x 8m
CEILING HEIGHT: 3m
MAINTENANCE: 0,8
REFLECTANCE: 20/70/50
WORKING PLANE: 0,8m
ILLUMINANCE: 288 lux
WALL ILLUMINANCE: 152 lux

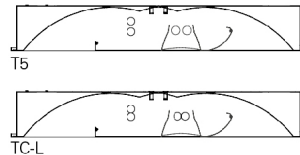


lux

DIMENSIONS

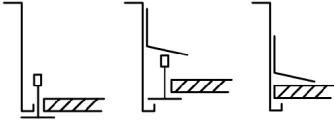


LAMPS CONFIGURATION



We reserve the right to make technical changes without prior notice.
Electrical/Optical data are subjected to a tolerance of +/-10%.

FIXING SYSTEMS



Lay-in version
for exposed T
grids
15/24mm.

Pull-up version
with brackets
for exposed T
grids 15/24mm.

Pull-up
version with
brackets for
plasterboard
ceilings.

TO SPECIFY:

Recessed direct/indirect T5(G5) or TC-L luminaire 600x600mm for modular ceilings. Double parabolic polished/satin high output aluminium louvre and microperforated side wings with asymmetric light distribution from half of the luminaire, providing wall wash effect. Suitable for lay-in into exposed T grids or pull up version with brackets. Optional light/presence sensor, dimmable versions, double switch and 1 or 3 hours emergency available – as Indelague TBI Lateral.

We reserve the right to make technical changes without prior notice.
Electrical/Optical data are subjected to a tolerance of +/-10%.