



LED



Norms: EN 60598-1, EN 60598-2-1



IP 20

bLINE
960°C

230V/50Hz

PRODUCT DESCRIPTION

Areas of Application: Commercial and Business areas, Public buildings, Housing, Offices, Hotel and Restaurant services, Art and Culture spaces.

Mounting: Surface/Suspended.

Light Distribution: Direct.

Light Source: LED 4000K, CRI>80, 50.000h life (@L80, B10, Ta 25 C).

Control Gear: LED driver, 220-240VAC-50/60Hz.

Materials: Body: Extruded aluminium profile.

Surface Finish: Anodised in natural colour.

bLINE - Opal polycarbonate diffuser (middle)

LAMP	UGR	W	lm	lm/W	η(%)	AxBxC (mm)	K1	K3	kg	HF	DALI
LED	≤22	30	3870	85	66	842x90x98	-	-	3,8	905G.130.20.F4	905G.130.20.E4
	≤22	39	5160	87	66	1122x90x98	•	•	4,3	905G.140.20.F4	905G.140.20.E4
	≤25	47	6450	86	63	1402x90x98	•	•	5,3	905G.150.20.F4	905G.150.20.E4
	≤22	56	7740	91	66	1682x90x98	•	•	7,6	905G.160.20.F4	905G.160.20.E4
	-	64	9030	93	66	1964x90x98	•	•	8,1	905G.170.20.F4	905G.170.20.E4
	-	77	10320	87	65	2244x90x98	•	•	8,6	905G.180.20.F4	905G.180.20.E4
	-	86	11610	88	65	2524x90x98	•	•	9,6	905G.190.20.F4	905G.190.20.E4
	-	94	12900	86	63	2804x90x98	•	•	10,6	905G.100.20.F4	905G.100.20.E4

Add suffix to order: Start - 00000.0000.0.0067 End - 00000.0000.0.0070

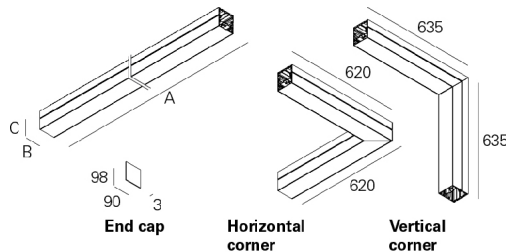
Please note:

- To complete a line, start kit will be necessary. Please order separately.
- Dimensions without end caps, please add 6mm to complete the line.

COLOUR / FINISH

Code	Description
W	White
B	Black

DIMENSIONS

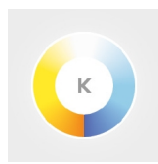


Example code for order: 905G.150.20.E4.0067 (START) + 905G.150.20.E4 (MIDDLE) + 905G.150.20.E4.0070 (END) + 3000 + 920801 + (2x) 9457 + (2x) 965200 + (2x) 930400 + 971400 + 940500 + (3x) 910501 (OPTIONS)

We reserve the right to make technical changes without prior notice. Electrical/Optical data are subjected to a tolerance of +/-10%.

OPTIONS

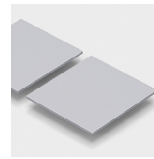
Colour temperature



3000K
Tunable white

Order code
3000
T000

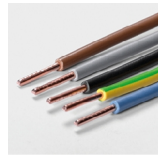
Start Kit



Start kit
• Two end caps included.

Order code
920801

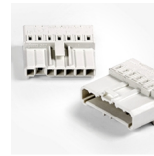
Through-wiring



1,5 mm² through-wiring
3 x 1,5 mm²
5 x 1,5 mm²
7 x 1,5 mm²
9 x 1,5 mm²
2,5 mm² through-wiring
3 x 2,5 mm²
5 x 2,5 mm²
7 x 2,5 mm²
9 x 2,5 mm²

Order code
9456
9457
9460
9486
9458
9459
9461
9487

Connectors



KIT 7-pole WAGO (male and female)
Connector 7-pole WAGO male
Connector 7-pole WAGO female

Order code
965200
965201
965202

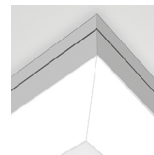
Body connector KIT



Body connector
• 3 galvanised connectors, includes screws.

Order code
930400

Light corners



Horizontal corner
39W HF
39W DALI
Vertical corner
39W HF
39W DALI

Order code
905G.H10.20.F
905G.H10.20.E
905G.V10.20.F
905G.V10.20.E

• LED light corner with HF or DALI driver and bLINE polycarbonate diffuser included.

Ceiling rose



Recessed
Grey
White
Black
Surface
Grey
White
Black

Order code
971402
971400
971401
971702
971700
971701

Current supply cable



1,5 m transparent cable 0,75 mm²
3 x 0,75 mm²
5 x 0,75 mm²
1,5 m transparent cable 1,5 mm²
3 x 1,5 mm²
5 x 1,5 mm²
7 x 1,5 mm²
9 x 1,5 mm²

Order code
940400
940500
940300
940000
940100
941200

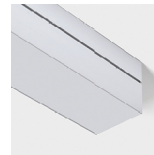
Suspension



Suspension Type "I" (x2)
Suspension Type "I" (x1)

Order code
910501
910500

Blank parts



1,5m length
3m length
• Includes empty aluminium body and blanking cover.

Order code
991200
991201

We reserve the right to make technical changes without prior notice. Electrical/Optical data are subjected to a tolerance of +/-10%.

Emergency unit

Order code



Emergency unit 3 hours
Emergency unit 1 hour

K3
K1

- Test function by telecommand signal.

Low power version



Option supplied under request.

Bespoke projects

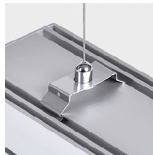


Option supplied under request.

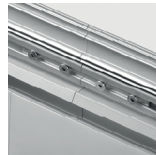
DETAILS



Clip-in diffuser system

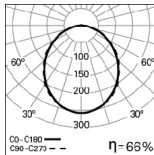


Suspended version

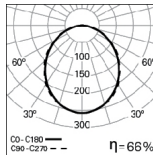


Body connector

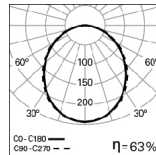
PHOTOMETRY



TCH LED Line 30W
bLINE 4000K



TCH LED Line 39W
bLINE 4000K



TCH LED Line 47W
bLINE 4000K

TO SPECIFY:

Linear surface or suspended LED luminaire for continuous line and 90 mm width. Extruded aluminium profile, anodised in natural colour. Aluminium end caps without visible screws and polycarbonate bLINE diffuser. Standard version with 4000K, CRI>80 and 50.000h lifetime (@L80, B10, Ta 25 C). Optional 3000K, DALI dimmable driver, TunableWhite technology, connectors, light corners and 1 or 3 hours emergency unit. Suspension kit, current supply cable and ceiling rose as accessories. – as Roxo Lighting TCH LED Line.