

Norms: EN 60598-1, EN 60598-2-2



**PRODUCT DESCRIPTION**

**Areas of Application:** Commercial and Business areas, Public buildings, Offices, Schools, Corridors.

**Mounting:** Ceiling recessed.

**Light Distribution:** Direct.

**Control Gear:** Electronic equipment, 220-240VAC-50/60Hz.

**Materials:** Body: Steel sheet.

**Surface Finish:** Powder coated in white matt (RAL9016).



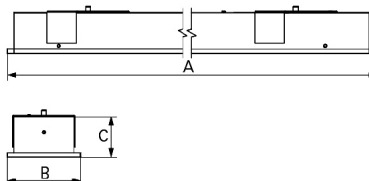
RAM - Asymmetric satin aluminium reflector

LAMP*	W	AxBxC (mm)	f	HF	DSI	DALI
T5	1x14	597x100x56	580x85	9A50.114.0C.A4	9A50.114.0C.84	9A50.114.0C.74
	1x24	597x100x56	580x85	9A50.124.0C.A4	9A50.124.0C.84	9A50.124.0C.74
	1x28	1197x100x56	1180x85	9A50.128.0C.A4	9A50.128.0C.84	9A50.128.0C.74
	1x35	1497x100x56	1480x85	9A50.135.0C.A4	9A50.135.0C.84	9A50.135.0C.74
	1x49	1497x100x56	1480x85	9A50.149.0C.A4	9A50.149.0C.84	9A50.149.0C.74
	1x54	1197x100x56	1180x85	9A50.154.0C.A4	9A50.154.0C.84	9A50.154.0C.74
	1x80	1497x100x56	1480x85	9A50.180.0C.A4	9A50.180.0C.84	9A50.180.0C.74

**OPTIONS**

Code	Description
--	Lamps as optional.

**DIMENSIONS**

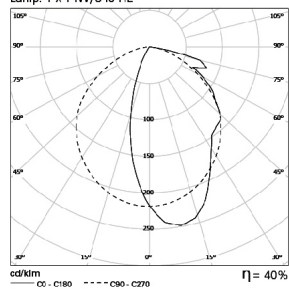


\* Lamp not included.  
Example code for order: 9A50.128.0C.74 (DALI)

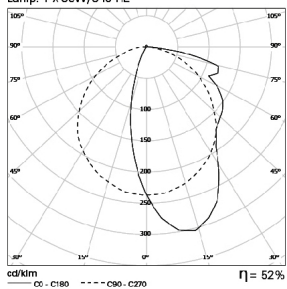
We reserve the right to make technical changes without prior notice.  
Electrical/Optical data are subjected to a tolerance of +/-10%.

**PHOTOMETRY**

**TEA 1x14W RAM**  
Lamp: 1 x 14W/840 HE



**TEA 1x35W RAM**  
Lamp: 1 x 35W/840 HE



**TO SPECIFY:**

Recessed asymmetric luminaire individually mounted with satin aluminium reflector. For single fluorescent 14/24/28/35/49/54/80W T5(G5) lamp. Suitable for pull up version with brackets – as Indelague TEA.

We reserve the right to make technical changes without prior notice.  
Electrical/Optical data are subjected to a tolerance of +/-10%.