



Norms: EN 60598-1, EN 60598-2-2



PRODUCT DESCRIPTION

Areas of Application: Commercial and Business areas, Public buildings, Offices, Schools, Corridors.

Mounting: Ceiling recessed.

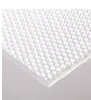


Light Distribution: Direct.

Control Gear: Electronic equipment, 220-240VAC-50/60Hz.

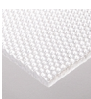


Materials: Body: Steel sheet.

Surface Finish: Powder coated in white matt (RAL9016).

DAM + DOP - Microprismatic diffuser with side wings in opal polycarbonate diffuser

	LAMP*	UGR		W	Lm/W	η(%)	AxBxC (mm)		Kg	HF	DSI	DALI
	T5	≤19	G5	2x14	60	81	595x595x95	578x578	5,5	9A3C.214.21.A4	9A3C.214.21.84	9A3C.214.21.74
		≤19	G5	2x24	59	81	595x595x95	578x578	5,5	9A3C.224.21.A4	9A3C.224.21.84	9A3C.224.21.74
	TC-L	≤19	2G11	1x40	60	75	595x595x95	578x578	5,5	973C.140.21.A4	973C.140.21.84	973C.140.21.74
		≤19	2G11	1x55	52	66	595x595x95	578x578	5,5	973C.155.21.A4	973C.155.21.84	973C.155.21.74

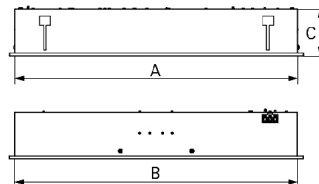
DAM - Microprismatic diffuser and perforated side wings

	LAMP*	UGR		W	Lm/W	η(%)	AxBxC (mm)		Kg	HF	DSI	DALI
	T5	≤19	G5	2x14	60	80	595x595x95	578x578	5,5	9A3C.214.6V.A4	9A3C.214.6V.84	9A3C.214.6V.74
		≤22	G5	2x24	57	79	595x595x95	578x578	5,5	9A3C.224.6V.A4	9A3C.224.6V.84	9A3C.224.6V.74
	TC-L	≤19	2G11	1x40	60	75	595x595x95	578x578	5,5	973C.140.6V.A4	973C.140.6V.84	973C.140.6V.74
		≤22	2G11	1x55	52	66	595x595x95	578x578	5,5	973C.155.6V.A4	973C.155.6V.84	973C.155.6V.74

OPTIONS

Code	Description
W3M	Connector 3-pole wieland GST18i3 male.
W5M	Connector 5-pole wieland GST18i5 male.
W5MD	Connector 5-pole wieland GST18i5 DIM male.
AC	Air handling L/s (20~40)
955000	Steel safety cable.
K3	Emergency unit 3 hours.
K1	Emergency unit 1 hour.
--	Lamps as optional.

DIMENSIONS



*Lamp not included.
Example code for order: 9A3C.224.21.74 (DALI) + W5MD + AC + 955000 (OPTIONS)

We reserve the right to make technical changes without prior notice.
Electrical/Optical data are subjected to a tolerance of +/-10%.

DETAILS



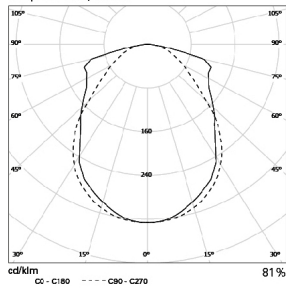
Side fixture connector on the luminaire



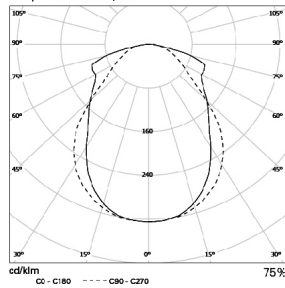
Air handling detail (Optional)

PHOTOMETRY

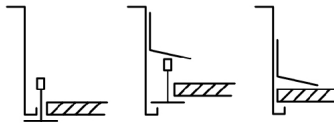
TEC 2x14W DAM-DOP
Lamp: 2 x 14W/840 HE



TEC 1x40W DAM
Lamp: 1 x TC-L40W/840



FIXING SYSTEMS



Lay-in version for exposed T grids 15/24mm.

Pull-up version with brackets for exposed T grids 15/24mm.

Pull-up version with brackets for plasterboard ceilings.

TO SPECIFY:

Recessed direct/indirect T5(G5) or TC-L luminaire 600x600mm for modular ceilings. Opal diffuser or perforated steel sheet on the sides providing diffuse lighting and center microprismatic diffuser for light glare control. Suitable for lay-in into exposed T grids or pull up version with brackets. Optional air handling, dimmable versions and 1 or 3 hours emergency available – as Roxo Lighting TEC.

We reserve the right to make technical changes without prior notice. Electrical/Optical data are subjected to a tolerance of +/-10%.