

Norms: EN 60598-1, EN 60598-2-25



PRODUCT DESCRIPTION

Areas of Application: Hospitals, Restaurant and Hotel services, Cleanrooms.

Mounting: Ceiling recessed.

Light Distribution: Direct.

Control Gear: Electronic equipment, 220-240VAC-50/60Hz.

Materials: Body: Steel sheet.
Frame: Extruded aluminium.

Surface Finish: Powder coated in white matt (RAL9016).

Fixing system: Pull-up version with brackets.

PST - P-SILVER Double parabolic louvre with tempered glass

| LAMP* | UGR | W | Lm/W | η(%) | AxBxC (mm) | Kg | HF | DSI | DALI |
|-------|-----|------|------|------|-------------|------|----------------|----------------|----------------|
| | ≤19 | 2x28 | 64 | 74 | 1197x297x72 | 8,7 | 964L.228.8I.A4 | 964L.228.8I.84 | 964L.228.8I.74 |
| | ≤19 | 2x35 | 67 | 77 | 1497x297x72 | 10,5 | 964L.235.8I.A4 | 964L.235.8I.84 | 964L.235.8I.74 |
| | ≤19 | 2x49 | 67 | 82 | 1497x297x72 | 10,5 | 964L.249.8I.A4 | 964L.249.8I.84 | 964L.249.8I.74 |
| | ≤22 | 2x54 | 58 | 73 | 1197x297x72 | 8,7 | 964L.254.8I.A4 | 964L.254.8I.84 | 964L.254.8I.74 |
| | ≤22 | 2x80 | 61 | 84 | 1497x297x72 | 10,5 | 964L.280.8I.A4 | 964L.280.8I.84 | 964L.280.8I.74 |
| | ≤19 | 3x14 | 60 | 78 | 597x597x72 | 8,5 | 964L.314.8I.A4 | 964L.314.8I.84 | 964L.314.8I.74 |
| | ≤19 | 3x24 | 58 | 82 | 597x597x72 | 8,5 | 964L.324.8I.A4 | 964L.324.8I.84 | 964L.324.8I.74 |
| | ≤19 | 4x14 | 60 | 77 | 597x597x72 | 8,5 | 964L.414.8I.A4 | 964L.414.8I.84 | 964L.414.8I.74 |
| | ≤22 | 4x24 | 59 | 82 | 597x597x72 | 8,5 | 964L.424.8I.A4 | 964L.424.8I.84 | 964L.424.8I.74 |

PBT - Polished double parabolic louvre with tempered glass



| LAMP* | UGR | W | Lm/W | η(%) | AxBxC (mm) | Kg | HF | DSI | DALI |
|-------|-----|------|------|------|-------------|------|----------------|----------------|----------------|
| | ≤19 | 2x28 | 55 | 63 | 1197x297x72 | 8,7 | 964L.228.85.A4 | 964L.228.85.84 | 964L.228.85.74 |
| | ≤19 | 2x35 | 59 | 67 | 1497x297x72 | 10,5 | 964L.235.85.A4 | 964L.235.85.84 | 964L.235.85.74 |
| | ≤19 | 2x49 | 58 | 71 | 1497x297x72 | 10,5 | 964L.249.85.A4 | 964L.249.85.84 | 964L.249.85.74 |
| | ≤19 | 2x54 | 50 | 63 | 1197x297x72 | 8,7 | 964L.254.85.A4 | 964L.254.85.84 | 964L.254.85.74 |
| | ≤22 | 2x80 | 55 | 75 | 1497x297x72 | 10,5 | 964L.280.85.A4 | 964L.280.85.84 | 964L.280.85.74 |
| | ≤19 | 3x14 | 52 | 67 | 597x597x72 | 8,5 | 964L.314.85.A4 | 964L.314.85.84 | 964L.314.85.74 |
| | ≤19 | 3x24 | 50 | 71 | 597x597x72 | 8,5 | 964L.324.85.A4 | 964L.324.85.84 | 964L.324.85.74 |
| | ≤19 | 4x14 | 55 | 70 | 597x597x72 | 8,5 | 964L.414.85.A4 | 964L.414.85.84 | 964L.414.85.74 |
| | ≤19 | 4x24 | 53 | 73 | 597x597x72 | 8,5 | 964L.424.85.A4 | 964L.424.85.84 | 964L.424.85.74 |

* Lamp not included.



Example code for order: 964L.414.8I.74 (DALI) + 955000 + BM (OPTIONS)

We reserve the right to make technical changes without prior notice.
Electrical/Optical data are subjected to a tolerance of +/-10%.



PMT - Satin double parabolic louvre with tempered glass

|  | LAMP* | UGR | W | Lm/W | η(%) | AxBxC (mm) | Kg |  | HF | DSI | DALI |
|--|-------|-----|------|------|------|-------------|------|---|----------------|----------------|----------------|
| | T5 | ≤16 | 2x28 | 48 | 55 | 1197x297x72 | 8,7 | | 964L.228.98.A4 | 964L.228.98.84 | 964L.228.98.74 |
| | | ≤19 | 2x35 | 50 | 57 | 1497x297x72 | 10,5 | | 964L.235.98.A4 | 964L.235.98.84 | 964L.235.98.74 |
| | | ≤19 | 2x49 | 50 | 61 | 1497x297x72 | 10,5 | | 964L.249.98.A4 | 964L.249.98.84 | 964L.249.98.74 |
| | | ≤19 | 2x54 | 41 | 52 | 1197x297x72 | 8,7 | | 964L.254.98.A4 | 964L.254.98.84 | 964L.254.98.74 |
| | | ≤19 | 2x80 | 45 | 62 | 1497x297x72 | 10,5 | | 964L.280.98.A4 | 964L.280.98.84 | 964L.280.98.74 |
| | | ≤16 | 3x14 | 44 | 57 | 597x597x72 | 8,5 | | 964L.314.98.A4 | 964L.314.98.84 | 964L.314.98.74 |
| | | ≤19 | 3x24 | 52 | 60 | 597x597x72 | 8,5 | | 964L.324.98.A4 | 964L.324.98.84 | 964L.324.98.74 |
| | | ≤16 | 4x14 | 47 | 60 | 597x597x72 | 8,5 | | 964L.414.98.A4 | 964L.414.98.84 | 964L.414.98.74 |
| | | ≤19 | 4x24 | 44 | 60 | 597x597x72 | 8,5 | | 964L.424.98.A4 | 964L.424.98.84 | 964L.424.98.74 |

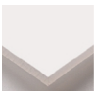

PBP - Polished double parabolic louvre with transparent polycarbonate diffuser

|  | LAMP* | UGR | W | Lm/W | η(%) | AxBxC (mm) | Kg |  | HF | DSI | DALI |
|--|-------|-----|------|------|------|-------------|-----|---|----------------|----------------|----------------|
| | T5 | ≤19 | 2x28 | 55 | 63 | 1197x297x72 | 6,7 | | 964L.228.84.A4 | 964L.228.84.84 | 964L.228.84.74 |
| | | ≤19 | 2x35 | 59 | 67 | 1497x297x72 | 8,5 | | 964L.235.84.A4 | 964L.235.84.84 | 964L.235.84.74 |
| | | ≤19 | 2x49 | 58 | 71 | 1497x297x72 | 8,5 | | 964L.249.84.A4 | 964L.249.84.84 | 964L.249.84.74 |
| | | ≤19 | 2x54 | 50 | 63 | 1197x297x72 | 6,7 | | 964L.254.84.A4 | 964L.254.84.84 | 964L.254.84.74 |
| | | ≤22 | 2x80 | 55 | 75 | 1497x297x72 | 8,5 | | 964L.280.84.A4 | 964L.280.84.84 | 964L.280.84.74 |
| | | ≤19 | 3x14 | 52 | 67 | 597x597x72 | 6,5 | | 964L.314.84.A4 | 964L.314.84.84 | 964L.314.84.74 |
| | | ≤19 | 3x24 | 50 | 71 | 597x597x72 | 6,5 | | 964L.324.84.A4 | 964L.324.84.84 | 964L.324.84.74 |
| | | ≤19 | 4x14 | 55 | 70 | 597x597x72 | 6,5 | | 964L.414.84.A4 | 964L.414.84.84 | 964L.414.84.74 |
| | | ≤19 | 4x24 | 53 | 73 | 597x597x72 | 6,5 | | 964L.424.84.A4 | 964L.424.84.84 | 964L.424.84.74 |

PMP - Satin double parabolic louvre with transparent polycarbonate diffuser

|  | LAMP* | UGR | W | Lm/W | η(%) | AxBxC (mm) | Kg |  | HF | DSI | DALI |
|--|-------|-----|------|------|------|-------------|-----|---|----------------|----------------|----------------|
| | T5 | ≤16 | 2x28 | 48 | 55 | 1197x297x72 | 6,7 | | 964L.228.97.A4 | 964L.228.97.84 | 964L.228.97.74 |
| | | ≤19 | 2x35 | 50 | 57 | 1497x297x72 | 8,5 | | 964L.235.97.A4 | 964L.235.97.84 | 964L.235.97.74 |
| | | ≤19 | 2x49 | 50 | 61 | 1497x297x72 | 8,5 | | 964L.249.97.A4 | 964L.249.97.84 | 964L.249.97.74 |
| | | ≤19 | 2x54 | 41 | 52 | 1197x297x72 | 6,7 | | 964L.254.97.A4 | 964L.254.97.84 | 964L.254.97.74 |
| | | ≤19 | 2x80 | 45 | 62 | 1497x297x72 | 8,5 | | 964L.280.97.A4 | 964L.280.97.84 | 964L.280.97.74 |
| | | ≤16 | 3x14 | 44 | 57 | 597x597x72 | 6,5 | | 964L.314.97.A4 | 964L.314.97.84 | 964L.314.97.74 |
| | | ≤19 | 3x24 | 52 | 60 | 597x597x72 | 6,5 | | 964L.324.97.A4 | 964L.324.97.84 | 964L.324.97.74 |
| | | ≤16 | 4x14 | 47 | 60 | 597x597x72 | 6,5 | | 964L.414.97.A4 | 964L.414.97.84 | 964L.414.97.74 |
| | | ≤19 | 4x24 | 44 | 60 | 597x597x72 | 6,5 | | 964L.424.97.A4 | 964L.424.97.84 | 964L.424.97.74 |

DOP - Opal polycarbonate diffuser

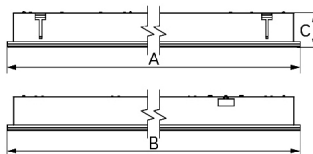
|  | LAMP* | UGR | W | Lm/W | η(%) | AxBxC (mm) | Kg |  | HF | DSI | DALI |
|--|-------|-----|------|------|------|-------------|-----|---|----------------|----------------|----------------|
| | T5 | ≤19 | 2x28 | 48 | 55 | 1197x297x72 | 6,3 | | 964L.228.21.A4 | 964L.228.21.84 | 964L.228.21.74 |
| | | ≤19 | 2x35 | 51 | 58 | 1497x297x72 | 7,6 | | 964L.235.21.A4 | 964L.235.21.84 | 964L.235.21.74 |
| | | ≤22 | 2x49 | 44 | 54 | 1497x297x72 | 7,6 | | 964L.249.21.A4 | 964L.249.21.84 | 964L.249.21.74 |
| | | ≤22 | 2x54 | 44 | 55 | 1197x297x72 | 6,3 | | 964L.254.21.A4 | 964L.254.21.84 | 964L.254.21.74 |
| | | ≤22 | 2x80 | 44 | 61 | 1497x297x72 | 7,6 | | 964L.280.21.A4 | 964L.280.21.84 | 964L.280.21.74 |
| | | ≤19 | 3x14 | 51 | 66 | 597x597x72 | 6 | | 964L.314.21.A4 | 964L.314.21.84 | 964L.314.21.74 |
| | | ≤22 | 3x24 | 48 | 68 | 597x597x72 | 6 | | 964L.324.21.A4 | 964L.324.21.84 | 964L.324.21.74 |
| | | ≤22 | 4x14 | 53 | 67 | 597x597x72 | 6 | | 964L.414.21.A4 | 964L.414.21.84 | 964L.414.21.74 |
| | | ≤22 | 4x24 | 48 | 66 | 597x597x72 | 6 | | 964L.424.21.A4 | 964L.424.21.84 | 964L.424.21.74 |

We reserve the right to make technical changes without prior notice.
Electrical/Optical data are subjected to a tolerance of +/-10%.

OPTIONS

| Code | Description |
|--------|---|
| K3 | Emergency unit 3 hours. |
| K1 | Emergency unit 1 hour. |
| 955000 | Steel safety cable. |
| AS | Above ceiling access (only for non-modular ceilings). |
| BM | Microperforated panel. |
| -- | Lamps as optional. |

DIMENSIONS



DETAILS



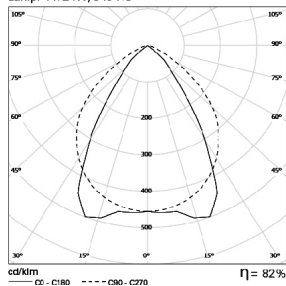
Pull-up version detail

IP20 brackets

PHOTOMETRY

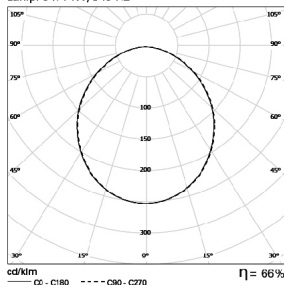
TEE 4x24W PST

Lamp: 4 x 24W/840 HO

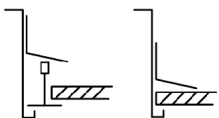


TEE 3x14W DOP

Lamp: 3 x 14W/840 HE



FIXING SYSTEMS



Pull-up version with brackets for exposed T grids 15/24mm.

Pull-up version with brackets for plasterboard ceilings.

TO SPECIFY:

IP20/65 recessed modular T5(G5) clean room luminaire. IP65 aluminium frame from below ceiling available with tempered glass or transparent polycarbonate in aggregation with high LOR louvre or opal diffuser. Equipped with HF control gear. Above ceiling access, dimmable version and emergency also available – as Indelague TEE.

We reserve the right to make technical changes without prior notice. Electrical/Optical data are subjected to a tolerance of +/-10%.