

Norms: EN 60598-1, EN 60598-2-25



PRODUCT DESCRIPTION

Areas of Application: Hospitals, Restaurant and Hotel services, Cleanrooms.

Mounting: Ceiling recessed.

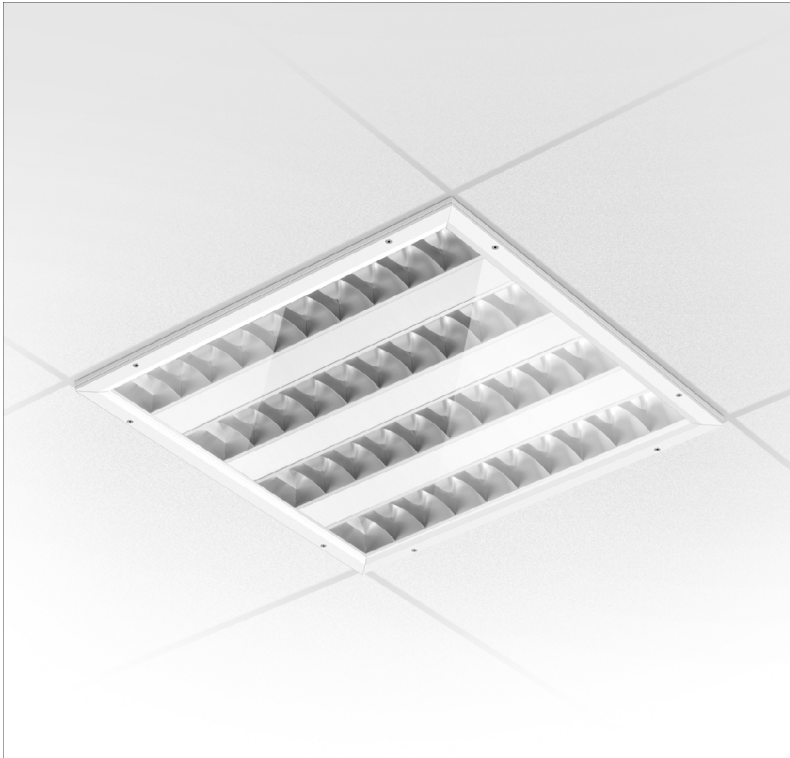
Light Distribution: Direct.

Control Gear: Electronic equipment, 220-240VAC-50/60Hz.



Materials: Body: Steel sheet.
Frame: Extruded aluminium.

Surface Finish: Powder coated in white matt (RAL9016).



Fixing system: Pull-up version with brackets.



PST - P-SILVER Double parabolic louvre with tempered glass

	LAMP*	UGR	W	Lm/W	η(%)	AxBxC (mm)	Kg		HF	DSI	DALI
	T5	≤19	2x28	64	74	1197x297x72	8,7		964L.228.8I.A4	964L.228.8I.84	964L.228.8I.74
		≤19	2x35	67	77	1497x297x72	10,5		964L.235.8I.A4	964L.235.8I.84	964L.235.8I.74
		≤19	2x49	67	82	1497x297x72	10,5		964L.249.8I.A4	964L.249.8I.84	964L.249.8I.74
		≤22	2x54	58	73	1197x297x72	8,7		964L.254.8I.A4	964L.254.8I.84	964L.254.8I.74
		≤22	2x80	61	84	1497x297x72	10,5		964L.280.8I.A4	964L.280.8I.84	964L.280.8I.74
		≤19	3x14	60	78	597x597x72	8,5		964L.314.8I.A4	964L.314.8I.84	964L.314.8I.74
		≤19	3x24	58	82	597x597x72	8,5		964L.324.8I.A4	964L.324.8I.84	964L.324.8I.74
		≤19	4x14	60	77	597x597x72	8,5		964L.414.8I.A4	964L.414.8I.84	964L.414.8I.74
		≤22	4x24	59	82	597x597x72	8,5		964L.424.8I.A4	964L.424.8I.84	964L.424.8I.74



PBT - Polished double parabolic louvre with tempered glass

	LAMP*	UGR	W	Lm/W	η(%)	AxBxC (mm)	Kg		HF	DSI	DALI
	T5	≤19	2x28	55	63	1197x297x72	8,7		964L.228.85.A4	964L.228.85.84	964L.228.85.74
		≤19	2x35	59	67	1497x297x72	10,5		964L.235.85.A4	964L.235.85.84	964L.235.85.74
		≤19	2x49	58	71	1497x297x72	10,5		964L.249.85.A4	964L.249.85.84	964L.249.85.74
		≤19	2x54	50	63	1197x297x72	8,7		964L.254.85.A4	964L.254.85.84	964L.254.85.74
		≤22	2x80	55	75	1497x297x72	10,5		964L.280.85.A4	964L.280.85.84	964L.280.85.74
		≤19	3x14	52	67	597x597x72	8,5		964L.314.85.A4	964L.314.85.84	964L.314.85.74
		≤19	3x24	50	71	597x597x72	8,5		964L.324.85.A4	964L.324.85.84	964L.324.85.74
		≤19	4x14	55	70	597x597x72	8,5		964L.414.85.A4	964L.414.85.84	964L.414.85.74
		≤19	4x24	53	73	597x597x72	8,5		964L.424.85.A4	964L.424.85.84	964L.424.85.74



* Lamp not included.
Example code for order: 964L.414.8I.74 (DALI) + 955000 + BM (OPTIONS)

We reserve the right to make technical changes without prior notice.
Electrical/Optical data are subjected to a tolerance of +/-10%.



PMT - Satin double parabolic louvre with tempered glass

	LAMP*	UGR	W	Lm/W	η(%)	AxBxC (mm)	Kg		HF	DSI	DALI
	T5	≤16	2x28	48	55	1197x297x72	8,7		964L.228.98.A4	964L.228.98.84	964L.228.98.74
		≤19	2x35	50	57	1497x297x72	10,5		964L.235.98.A4	964L.235.98.84	964L.235.98.74
		≤19	2x49	50	61	1497x297x72	10,5		964L.249.98.A4	964L.249.98.84	964L.249.98.74
		≤19	2x54	41	52	1197x297x72	8,7		964L.254.98.A4	964L.254.98.84	964L.254.98.74
		≤19	2x80	45	62	1497x297x72	10,5		964L.280.98.A4	964L.280.98.84	964L.280.98.74
		≤16	3x14	44	57	597x597x72	8,5		964L.314.98.A4	964L.314.98.84	964L.314.98.74
		≤19	3x24	52	60	597x597x72	8,5		964L.324.98.A4	964L.324.98.84	964L.324.98.74
		≤16	4x14	47	60	597x597x72	8,5		964L.414.98.A4	964L.414.98.84	964L.414.98.74
		≤19	4x24	44	60	597x597x72	8,5		964L.424.98.A4	964L.424.98.84	964L.424.98.74

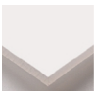

PBP - Polished double parabolic louvre with transparent polycarbonate diffuser

	LAMP*	UGR	W	Lm/W	η(%)	AxBxC (mm)	Kg		HF	DSI	DALI
	T5	≤19	2x28	55	63	1197x297x72	6,7		964L.228.84.A4	964L.228.84.84	964L.228.84.74
		≤19	2x35	59	67	1497x297x72	8,5		964L.235.84.A4	964L.235.84.84	964L.235.84.74
		≤19	2x49	58	71	1497x297x72	8,5		964L.249.84.A4	964L.249.84.84	964L.249.84.74
		≤19	2x54	50	63	1197x297x72	6,7		964L.254.84.A4	964L.254.84.84	964L.254.84.74
		≤22	2x80	55	75	1497x297x72	8,5		964L.280.84.A4	964L.280.84.84	964L.280.84.74
		≤19	3x14	52	67	597x597x72	6,5		964L.314.84.A4	964L.314.84.84	964L.314.84.74
		≤19	3x24	50	71	597x597x72	6,5		964L.324.84.A4	964L.324.84.84	964L.324.84.74
		≤19	4x14	55	70	597x597x72	6,5		964L.414.84.A4	964L.414.84.84	964L.414.84.74
		≤19	4x24	53	73	597x597x72	6,5		964L.424.84.A4	964L.424.84.84	964L.424.84.74

PMP - Satin double parabolic louvre with transparent polycarbonate diffuser

	LAMP*	UGR	W	Lm/W	η(%)	AxBxC (mm)	Kg		HF	DSI	DALI
	T5	≤16	2x28	48	55	1197x297x72	6,7		964L.228.97.A4	964L.228.97.84	964L.228.97.74
		≤19	2x35	50	57	1497x297x72	8,5		964L.235.97.A4	964L.235.97.84	964L.235.97.74
		≤19	2x49	50	61	1497x297x72	8,5		964L.249.97.A4	964L.249.97.84	964L.249.97.74
		≤19	2x54	41	52	1197x297x72	6,7		964L.254.97.A4	964L.254.97.84	964L.254.97.74
		≤19	2x80	45	62	1497x297x72	8,5		964L.280.97.A4	964L.280.97.84	964L.280.97.74
		≤16	3x14	44	57	597x597x72	6,5		964L.314.97.A4	964L.314.97.84	964L.314.97.74
		≤19	3x24	52	60	597x597x72	6,5		964L.324.97.A4	964L.324.97.84	964L.324.97.74
		≤16	4x14	47	60	597x597x72	6,5		964L.414.97.A4	964L.414.97.84	964L.414.97.74
		≤19	4x24	44	60	597x597x72	6,5		964L.424.97.A4	964L.424.97.84	964L.424.97.74

DOP - Opal polycarbonate diffuser

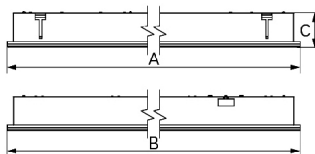
	LAMP*	UGR	W	Lm/W	η(%)	AxBxC (mm)	Kg		HF	DSI	DALI
	T5	≤19	2x28	48	55	1197x297x72	6,3		964L.228.21.A4	964L.228.21.84	964L.228.21.74
		≤19	2x35	51	58	1497x297x72	7,6		964L.235.21.A4	964L.235.21.84	964L.235.21.74
		≤22	2x49	44	54	1497x297x72	7,6		964L.249.21.A4	964L.249.21.84	964L.249.21.74
		≤22	2x54	44	55	1197x297x72	6,3		964L.254.21.A4	964L.254.21.84	964L.254.21.74
		≤22	2x80	44	61	1497x297x72	7,6		964L.280.21.A4	964L.280.21.84	964L.280.21.74
		≤19	3x14	51	66	597x597x72	6		964L.314.21.A4	964L.314.21.84	964L.314.21.74
		≤22	3x24	48	68	597x597x72	6		964L.324.21.A4	964L.324.21.84	964L.324.21.74
		≤22	4x14	53	67	597x597x72	6		964L.414.21.A4	964L.414.21.84	964L.414.21.74
		≤22	4x24	48	66	597x597x72	6		964L.424.21.A4	964L.424.21.84	964L.424.21.74

We reserve the right to make technical changes without prior notice.
Electrical/Optical data are subjected to a tolerance of +/-10%.

OPTIONS

Code	Description
K3	Emergency unit 3 hours.
K1	Emergency unit 1 hour.
955000	Steel safety cable.
AS	Above ceiling access (only for non-modular ceilings).
BM	Microperforated panel.
--	Lamps as optional.

DIMENSIONS



DETAILS



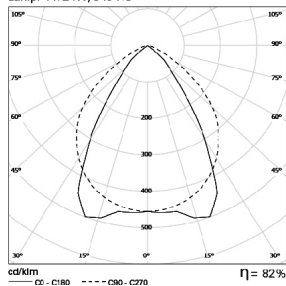
Pull-up version detail

IP20 brackets

PHOTOMETRY

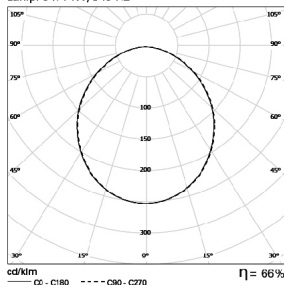
TEE 4x24W PST

Lamp: 4 x 24W/840 HO

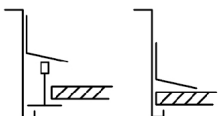


TEE 3x14W DOP

Lamp: 3 x 14W/840 HE



FIXING SYSTEMS



Pull-up version with brackets for exposed T grids 15/24mm.

Pull-up version with brackets for plasterboard ceilings.

TO SPECIFY:

IP20/65 recessed modular T5(G5) clean room luminaire. IP65 aluminium frame from below ceiling available with tempered glass or transparent polycarbonate in aggregation with high LOR louvre or opal diffuser. Equipped with HF control gear. Above ceiling access, dimmable version and emergency also available – as Roxo Lighting TEE.

We reserve the right to make technical changes without prior notice. Electrical/Optical data are subjected to a tolerance of +/-10%.