



**LED**



Norms: EN 60598-1, EN 60598-2-25



**PRODUCT DESCRIPTION**

**Areas of Application:** Hospitals, Restaurant and Hotel services, Cleanrooms.

**Mounting:** Ceiling recessed.

**Light Distribution:** Direct.

**Light Source:** LED 4000K, CRI>80, 65.000h life (@L90, B10, Ta 25 C).

**Control Gear:** LED driver, 220-240VAC-50/60Hz.

**Wiring:** Pre-wired with 1m long H05VV-F cable.

**Materials:** Body: Steel sheet.  
Frame: Extruded aluminium.

**Surface Finish:** Powder coated in white matt (RAL9016).

**Fixing system:** Brackets.

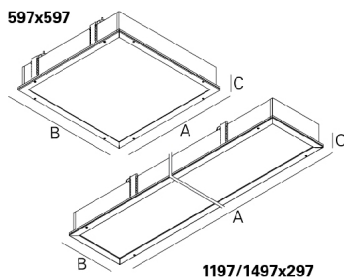
DAM - Microprismatic diffuser.

LAMP	UGR	W	Lm	Lm/W	η(%)	AxBxC (mm)	Beam	K1	K3	Kg	HF	DALI
LED	≤19	39	5440	96	69	1197x297x134	1180x288	•	•	9,8	901R.140.6V.F4	901R.140.6V.E4
	≤19	47	6800	103	71	1497x297x134	1480x288	•	•	11,5	901R.150.6V.F4	901R.150.6V.E4
	≤19	39	5440	102	73	597x597x134	580x588	•	•	9,2	901R.410.6V.F4	901R.410.6V.E4

DOZ - Opal polycarbonate diffuser.

LAMP	UGR	W	Lm	Lm/W	η(%)	AxBxC (mm)	Beam	K1	K3	Kg	HF	DALI
LED	≤22	39	5440	92	66	1197x297x134	1180x288	•	•	9,8	901R.140.2J.F4	901R.140.2J.E4
	≤22	47	6800	98	68	1497x297x134	1480x288	•	•	11,5	901R.150.2J.F4	901R.150.2J.E4
	≤22	39	5440	98	70	597x597x134	580x588	•	•	9,2	901R.410.2J.F4	901R.410.2J.E4

**DIMENSIONS**



Example code for order: 901R.140.6V.E4 (DALI) + 3000 + 965403 + 965401 + 955000 + K3 (OPTIONS)

We reserve the right to make technical changes without prior notice. Electrical/Optical data are subjected to a tolerance of +/-10%.

### OPTIONS

#### Colour temperature



3000K

Order code  
**3000**

#### Connectors



Connector 3-pole Wieland GST18i3 male  
Connector 5-pole Wieland GST18i5 male  
Connector 5-pole Wieland GST18i5 DIM male

Order code  
**965301**  
**965401**  
**965403**

#### Safety cable



Steel safety cable

Order code  
**955000**

#### CRI>90



Option supplied under request.

#### Emergency unit



Emergency unit 3 hours  
Emergency unit 1 hour

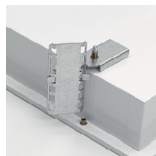
Order code  
**K3**  
**K1**

• Includes test function by Telecommand signal.

### DETAILS

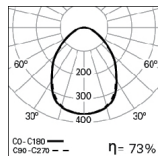


Pull-up version detail

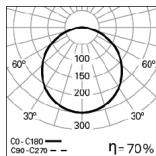


IP65 brackets

### PHOTOMETRY

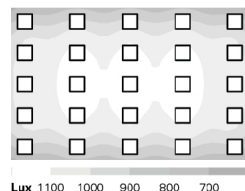


**THE LED 39W DAM**  
**(597x597mm) 4000K**



**THE LED 39W DOZ**  
**(597x597mm) 4000K**

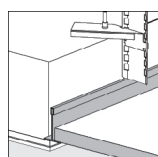
### PERFORMANCE



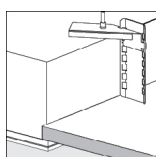
#### THE LED DOZ

LED: 39W  
DIMENSIONS: 10m x 6,5m  
HEIGHT: 3m  
MAINTENANCE: 0,8  
REFLECTANCE: 70/50/20  
WORKING PLACE: 0,8m  
ILLUMINANCE  $E_{w,1}$ : 1010 lux  
UGR:  $\leq 16$

### FIXING SYSTEMS



Pull-up version with brackets for exposed T grids 15/24mm.



Pull-up version with brackets for plasterboard ceilings.

#### TO SPECIFY:

LED recessed modular IP65 luminaire for pull-up version with brackets. Extruded aluminium frame available with microprismatic (DAM) or opal (DOZ) diffuser. Standard version with 4000K, CRI > 80 and 65000h lifetime (@ L90, B10, Ta 25 C). Pre-wired with 1m long H05VV-F cable. Optional DALI dimmable driver, 3000K, connectors and 1 or 3 hours emergency unit. – as Roxo Lighting THE LED.

We reserve the right to make technical changes without prior notice. Electrical/Optical data are subjected to a tolerance of +/-10%.