

Norms: EN 60598-1, EN 60598-2-1



**PRODUCT DESCRIPTION**

**Areas of Application:** Police stations, detention centres, public spaces, psychiatric hospitals, schools.

**Mounting:** Ceiling/Wall Surface.

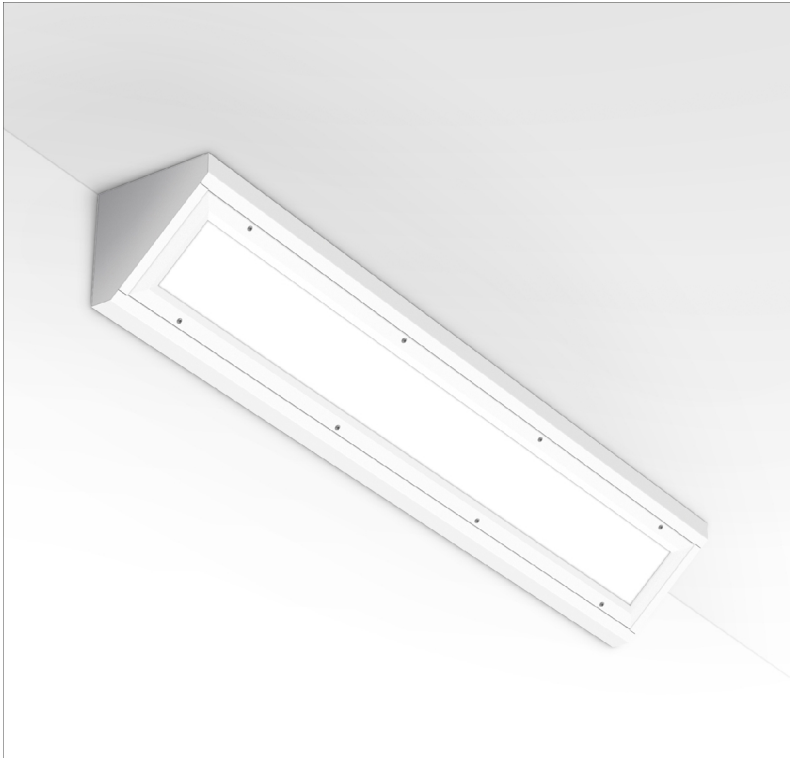
**Light Distribution:** Direct.

**Optical System:** Diffuser: 3mm polycarbonate.

**Control Gear:** Electronic equipment, 220-240VAC-50/60Hz.

**Materials:** Body: Steel sheet.  
Frame: Extruded aluminium.

**Surface Finish:** Powder coated in white matt (RAL9016).



DOP - Opal polycarbonate diffuser

LAMP	W	AxBxC (mm)	HF	DSI	DALI
 T5	2x28	1260x175x175	963S.228.21.A4	963S.228.21.84	963S.228.21.74
	2x35	1560x175x175	963S.235.21.A4	963S.235.21.84	963S.235.21.74
	2x49	1560x175x175	963S.249.21.A4	963S.249.21.84	963S.249.21.74
	2x54	1260x175x175	963S.254.21.A4	963S.254.21.84	963S.254.21.74
	2x80	1560x175x175	963S.280.21.A4	963S.280.21.84	963S.280.21.74

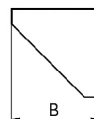
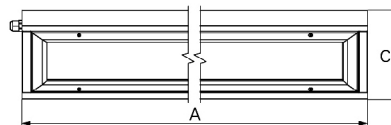
DPT - Transparent polycarbonate diffuser

LAMP	W	AxBxC (mm)	HF	DSI	DALI
 T5	2x28	1260x175x175	963S.228.7Z.A4	963S.228.7Z.84	963S.228.7Z.74
	2x35	1560x175x175	963S.235.7Z.A4	963S.235.7Z.84	963S.235.7Z.74
	2x49	1560x175x175	963S.249.7Z.A4	963S.249.7Z.84	963S.249.7Z.74
	2x54	1260x175x175	963S.254.7Z.A4	963S.254.7Z.84	963S.254.7Z.74
	2x80	1560x175x175	963S.280.7Z.A4	963S.280.7Z.84	963S.280.7Z.74

**OPTIONS**

Code	Description
K3	Emergency unit 3 hours.
K1	Emergency unit 1 hour.
--	Lamps as optional.

**DIMENSIONS**



\* Lamp not included  
Example code for order: 963S.228.21.74 (DALI)

We reserve the right to make technical changes without prior notice.  
Electrical/Optical data are subjected to a tolerance of +/-10%.

**TO SPECIFY:**

Ceiling/Wall mounted IP65 sealed luminaire for fluorescent T5(G5)  
28/35/49/54/80W. Aluminium frame with tamperproof screws and transparent or  
opal polycarbonate diffuser designed to resist extreme physical impact (IK10).  
Optional 1 or 3 hours emergency – as Indelague TLP /C.

We reserve the right to make technical changes without prior notice.  
Electrical/Optical data are subjected to a tolerance of +/-10%.